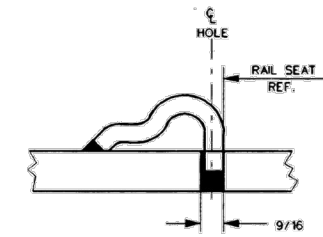


STOCK NUMBER		ITEM NO.	DESCRIPTION	STANDARD PLAN NO.	MARK NO.	QTY.
NEW	PART WORN					
		1	BRIDGE GUARD RAIL GAUGE PLATE	-----	BP-5	2
		2	PANDROL TOEPLATE	-----	2	4
		3	PANDROL CLIP - TYPE PR631A	GTS-1322	-----	2
		4	PANDROL CLIP - TYPE PR633	GTS-1322	-----	4
		5	RAIL CLIP	GTS-1335B	1335 B	2
		6	TIE SCREW - Ss5	GTS-1315	Ss5	10
		7	DOUBLE SPRING WASHER	GTS-1310	-----	10
		8	INSULATOR, DELRIN BLACK	GTS-1323	-----	4
		9	RAIL PAD "4D"	GTS-0519	-----	2
		10	1" DIA.-8 UNC SO. HD. (1/4" THK.) C. BOLT X 3-1/2" LG. c/w SO. NUT	GTS-1307/1	-----	4
		11	SPRING WASHER FOR 1" DIA. BOLT	GTS-1301	-----	4
		12	PLATE WASHER FOR 1" DIA. BOLT (1-1/16" I.D.X2-1/2" O.D.X5/32" THK.)	GTS-1337	-----	4
		13	INSULATION PLATE	GTS-0526	136	4

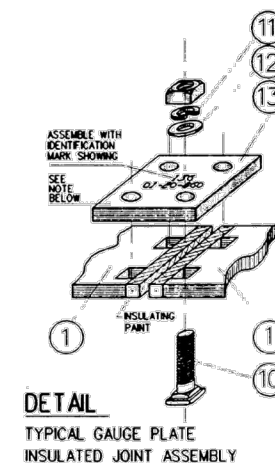
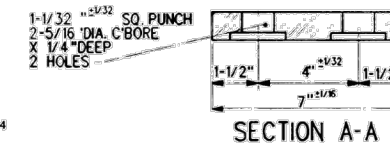
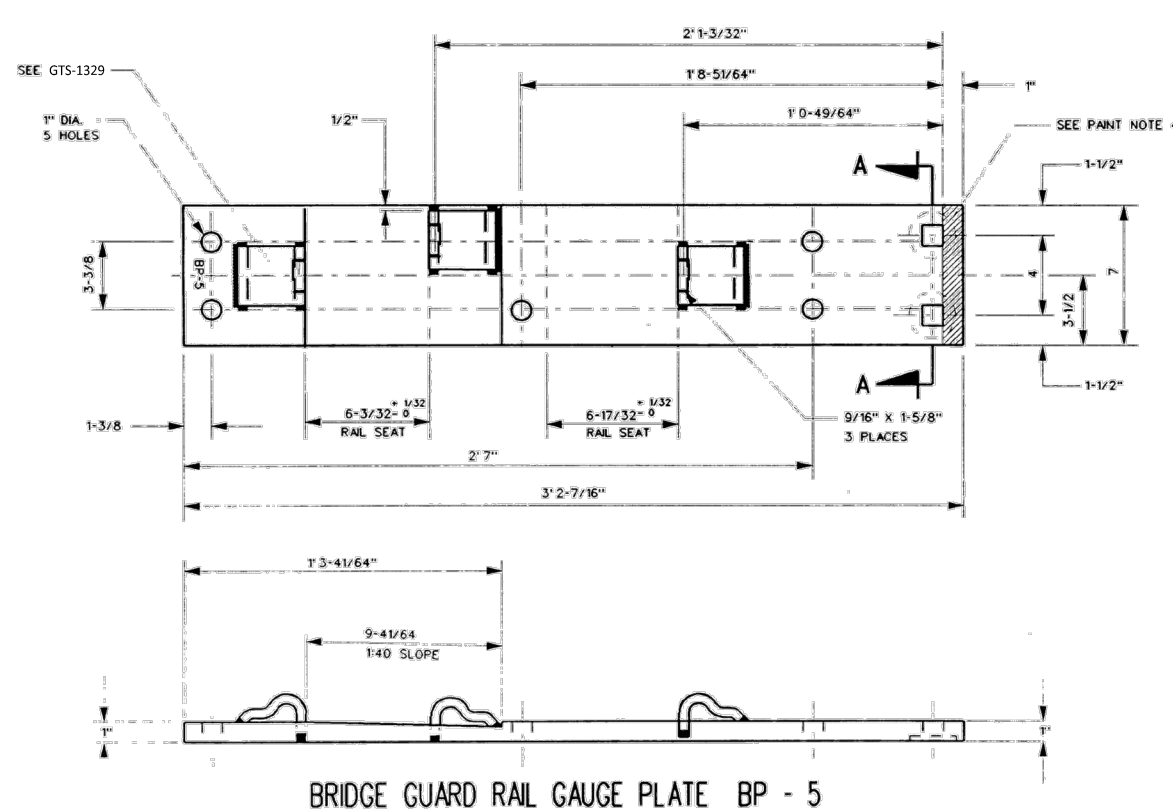


TYPICAL PANDROL SHOULDER INSTALLATION

- NOTES :**
1. IDENTIFICATION CHARACTERS (1/2" MINIMUM HEIGHT) TO BE STAMPED ON EACH PLATE AS SHOWN.
 2. UNLESS OTHERWISE SHOWN, ALL DIMENSIONS ARE IN INCHES.
 3. UNLESS OTHERWISE SPECIFIED, ALL TOLERANCES TO BE $\pm 1/32"$.
 4. THE ENDS OF GAUGE PLATES TO BE PAINTED WITH INSULATING PAINT AS SHOWN.
 5. THE USE OF ACETYLENE TORCH OR OTHER BURNING METHOD FOR THE CUTTING OF HOLES IS ABSOLUTELY PROHIBITED.

MATERIAL : PLATES TO CONFORM TO THE LATEST REVISION OF GO TRANSIT TRACK STANDARDS OR IN GENERAL WITH LATEST REVISION OF A.S.T.M. SPECIFICATION FOR COMMERCIAL QUALITY HOT ROLLED BAR STEEL A-675 CHEMICAL REQUIREMENT.

	MINIMUM	MAXIMUM
CARBON	0.15 %	0.25 %
MANGANESE	0.30 %	0.60 %
PHOSPHORUS	0.04 %	0.04 %
SULPHUR		0.05 %



NOTE:
DIELECTRIC REQUIREMENT.
DIELECTRIC TESTS SHALL BE MADE WITH THE INSULATION DRY.
ASSEMBLED INSULATED TRACK FITTINGS SHALL WITHSTAND FOR NOT LESS THAN THREE SECONDS AN INSULATED TEST OF 1500 VOLTS A.C. WITHOUT FLASH OVER OR PUNCTURE BETWEEN ALL METALLIC PARTS AND OTHER METALLIC PARTS INSULATED THEREFROM.

0	17/12/15	REVISED PDF VERSION ESTABLISHED	
No.	Date	Revision	By Approved

Standard / MACHINING / ASSEMBLY
BRIDGE GUARD RAIL GAUGE PLATE
FOR 136 LB. RAILS (PANOROL FASTENINGS)

Drawn MG Checked GGS Approved *KBL*
VP Corridor Infrastructure



Date DEC 15, 2017 Plan Number GTS-0691 Rev 0

REFERENCE: TS-691

Sheet 1 OF 1