

# UPDATED: Station excavation and cavern work at Queen-Spadina

**Expected start date:** February 2025

**Hours of work:** 24-hour shifts (Monday - Saturday), **with occasional Sunday work as needed.**

**Expected Completion:** Early 2026

## What is cavern excavation?

As major construction continues at the future Ontario Line Queen-Spadina subway station, cavern excavation is underway and will continue at both north and south sites, into early 2026.

Cavern excavation involves crews connecting the newly completed station shaft to the future station platform area and excavate in a southwest direction away from the northeast corner of Queen Street and Spadina Avenue.

This cavern also creates space for the future Ontario Line tunnelling machines to pass through, as they create the subway tunnels through downtown Toronto.

## What to expect

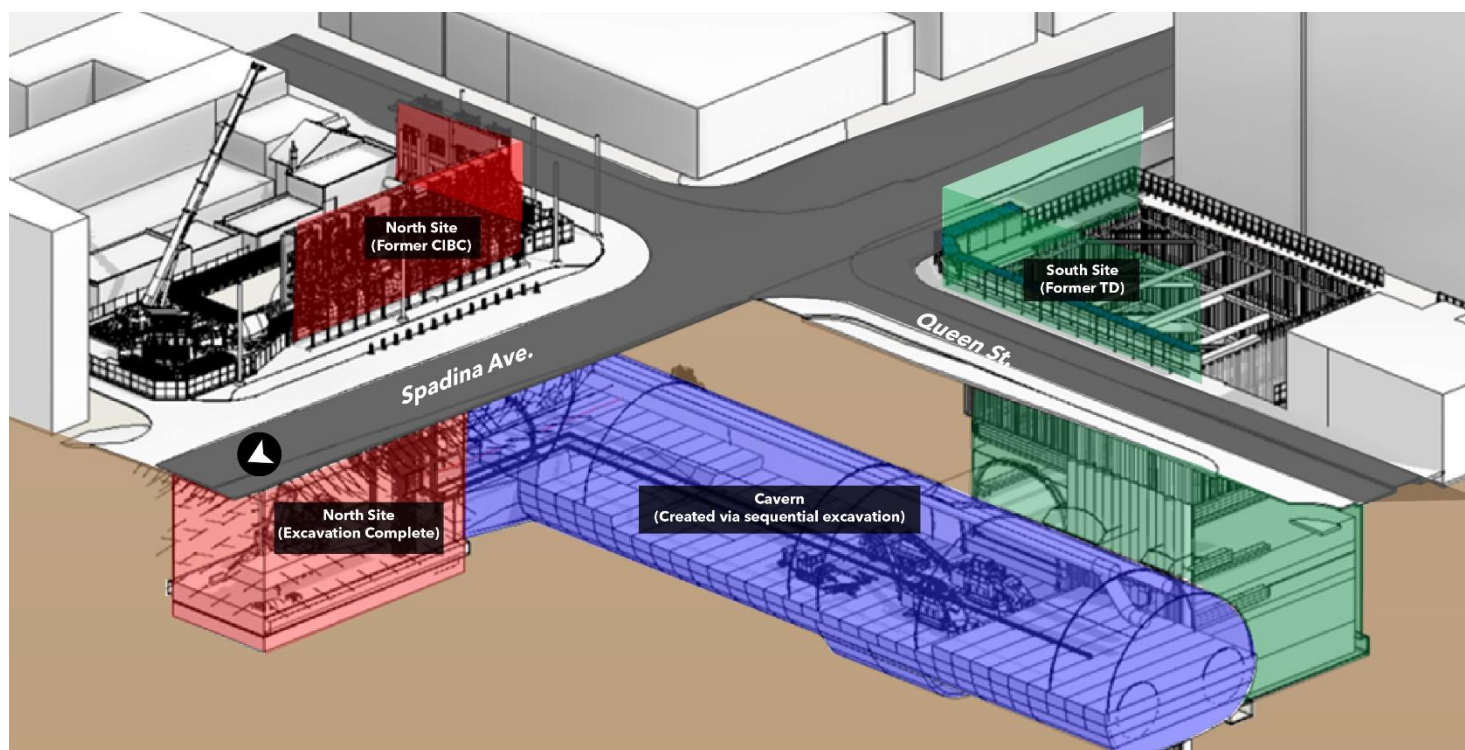


Diagram of the Queen-Spadina cavern location

- Specialized excavation machinery is working in the excavated shaft at the north site. A specialized technique known as sequential excavation is being used to perform a type of deep underground mining excavation.
- The excavation of the cavern is an essential step in creating a new space for the station subway platform.

- Rock spoils will be raised out of the excavated shaft and transported away using dump trucks, following specified trucking routes. Traffic control persons will guide trucks, traffic, pedestrians and cyclists as needed, as vehicles enter and exit the sites.
  - Due to the mining nature of the work, **crews will continue to work on a 24-hour rotation to excavate the station cavern, Monday to Saturday. Occasional Sunday shifts may be required.** This continuous methodology keeps crews safe and ensures support for the excavation. A piece of equipment called a roadheader will rotate a specialized attachment to “shave” material underground. Noise and vibration from the equipment is monitored continuously as the machine moves away from the site.
  - To reduce impacts to residents and businesses in the area, mitigations are in place including air quality, noise, and vibration monitoring, site hoarding, additional paved areas, sprinkler systems, and mud mats for dust suppression.
- 

**Contact us:**

Call us 24/7 at: [416-202-5100](tel:416-202-5100)

Write to us at: [ontarioline@metrolinx.com](mailto:ontarioline@metrolinx.com)

Find us on X, Facebook, and Instagram:

[@ontarioline](#)

Visit the website:

[www.metrolinx.com/ontarioline](http://www.metrolinx.com/ontarioline)

**Visit our community offices:**

**770 Queen Street East (near Queen & Broadview)**

General hours:

Mondays, Tuesdays, and Fridays: 9:00 a.m. to 5:00 p.m.

Wednesdays: 1:00 p.m. to 6:00 p.m.

Thursdays: 10:00 a.m. to 6:00 p.m.

**Thornccliffe Park:**

East York Town Centre

45 Overlea Blvd., Toronto, ON M4H 1C3

Unit 153 (across from the Rogers store)

General hours:

Monday – Friday, 9 a.m. – 5 p.m.