

# LAND ACKNOWLEDGEMENT

Metrolinx acknowledges that we connect communities by building and operating transit within the traditional lands of the Anishinaabe, the Haudenosaunee and the Huron-Wendat peoples, for whom these lands continue to have great importance.

Treaties between First Nations and governments cover these lands, and the promises contained in these Treaties remain relevant to this day.

Metrolinx and its employees are committed to understanding the history of these lands and the continued impacts of colonization and take responsibility for actions to advance reconciliation.

Metrolinx will continue to seek the knowledge, expertise and experience of Indigenous partners and commits to doing business in a manner that is built on a foundation of trust, respect, and collaboration.



# **Ontario Line**

# **Construction Liaison Committee**

# **Pape-Danforth & Sammon**

**January 15, 2025**

# Pape-Danforth Slurry Wall Installation Progress

## South Shaft

**45**

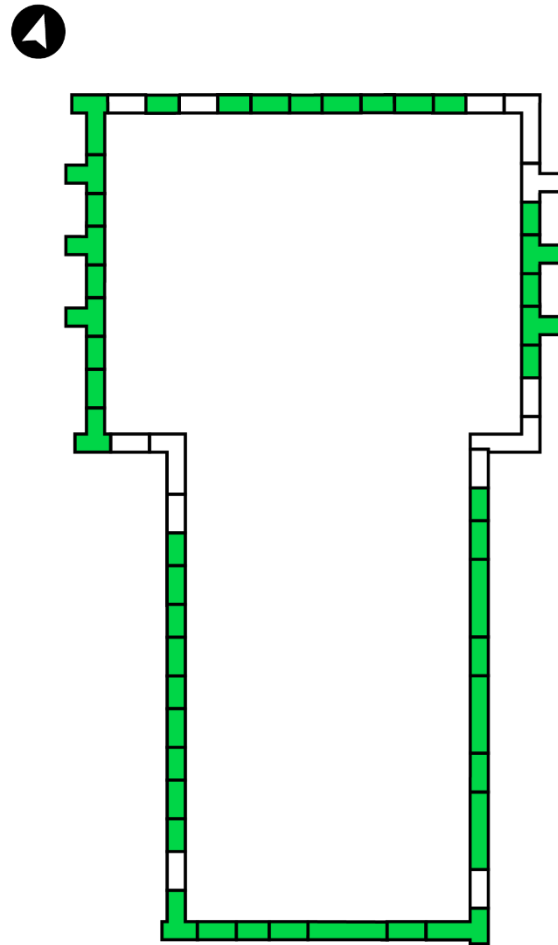
Panels installed

**13**

Panels remaining

**78%**

Installation complete



Danforth Ave.

## North Shaft

**25**

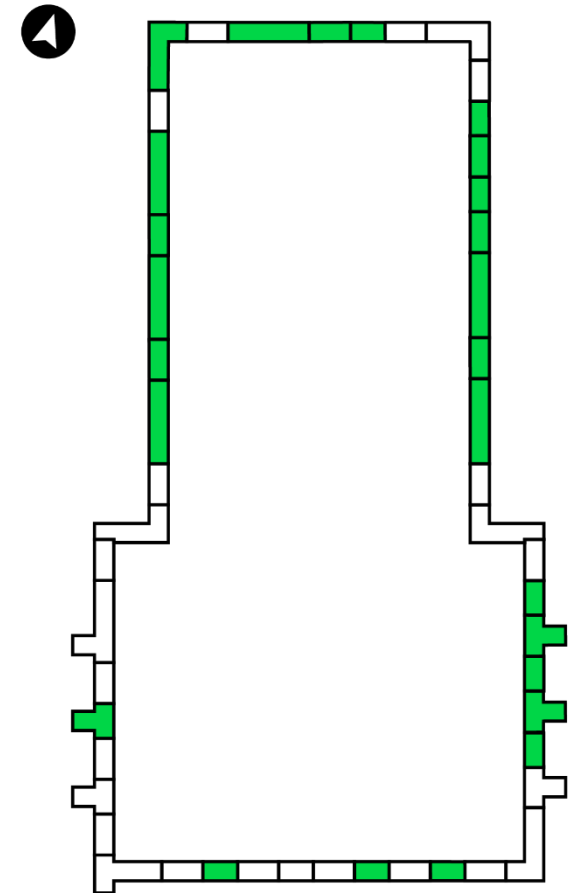
Panels installed

**25**

Panels remaining

**50%**

Installation complete



Gertrude Pl.

*Completed*  
As of December 31, 2024

# Pape-Danforth Site Improvements

## Power source

- Bring power to Pape site along Lipton Ave.



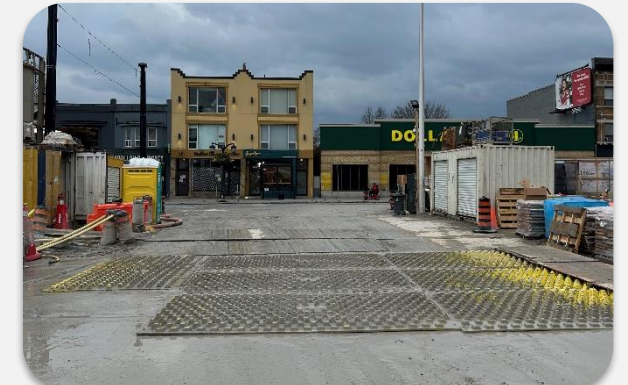
## Enclosures

- Enclose around the slurry plant and water treatment plant at Pape.



## Mud mat

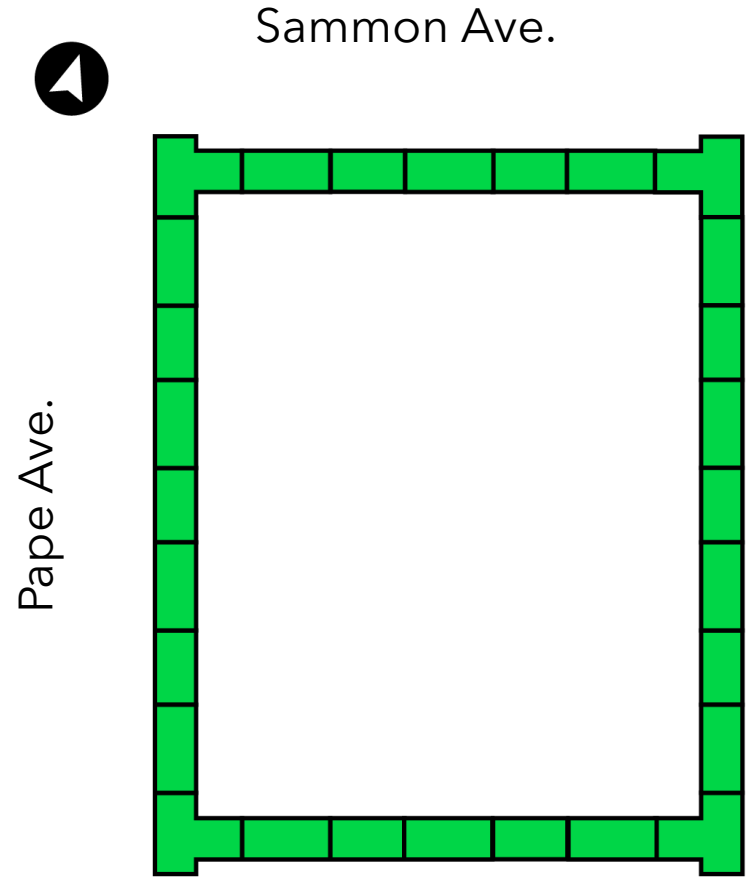
- Additional mud mats have been installed at access points to reduce mud tracking onto streets.



# Sammon EEB Slurry Wall Installation Progress

**28**  
Panels installed

**100%**  
Installation complete



# Sammon Emergency Exit Building site improvements

Before slurry wall demobilization:



As of January 8:



Silos removed from site

Slurry plant demobilization has begun

Generator removed from site

# Look-Ahead Schedule:

#	Activity	Location	Expected Start	Expected Duration	Impact	Hours of Work	Mitigations
1	Pape slurry wall construction	Pape	June 2024	Spring 2025	Noise	Monday - Friday: 24 hrs Saturday: 6am-7pm	Noise wall Slurry plant enclosure
2	Jet grouting	Gertrude	Dec 2024	July 2025	Noise	Monday - Friday: 7am-7pm	Noise wall *Only maintenance will be done on Saturday for jet grouting works
3	Sammon Excavation	Sammon	February 2025	October 2025	Noise	Monday - Friday: 24 hrs Saturday: 6am-7pm	Noise wall
4	Traffic Decking	Danforth	February 2025	May 2025	Noise	Monday - Friday: 24 hrs Saturday: 6am-7pm	N/A

- During the month of December, jet grouting mobilization started. Drilling for jet grouting columns began in January 2025.
- On Saturdays, only maintenance\* will be done for jet grouting works. All other works (including slurry wall construction) will proceed as normal from 6am-7pm on Saturdays.
  - \*Potential for underground obstruction discovery & removal work during Saturday day shift - 8am-4pm, including hydrovac use

## Gertrude Jet Grouting Works (January 2025)

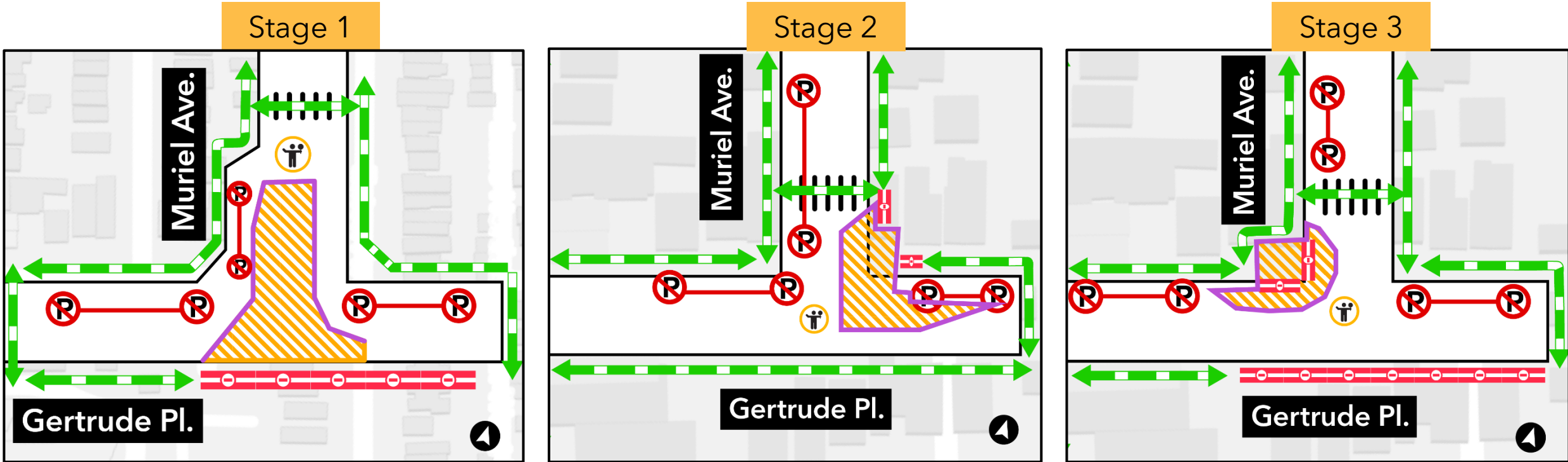
- Jet grouting work began in early January 2025 on Gertrude Place near Muriel Avenue.
  - This work will take place in three stages from Monday to Saturday during the day shift for approximately six months.
- The first stage is expected to take place from December 2024 to May 2025.
  - The second stage is expected to take place from May 2025 to June 2025.
  - The third stage is expected to take place from June 2025 to July 2025.
- Jet grouting is a soil stabilization technique that involves injecting grout deep into the soil. The grout mixes with the soil and hardens, adding stability underneath existing structures near where excavation work will occur.



Site setup at Gertrude and Muriel



# Gertrude Jet Grouting Stages



- Pedestrian access
- Sidewalk closure
- Traffic Control
- Work zone
- Restricted parking
- Noise barrier

## Bulk Excavation at Sammon EEB

- Upon completion of slurry wall installation, crews will begin to excavate within the foundation box formed by the slurry walls.
- Approximately 30 trucks per day will be leaving the site to haul excavated material.
- Truck haul routes will be on Pape Avenue from the site to O'Connor Drive, for both inbound and outbound trucks.
- Trucks will stage on Pape Avenue south of the site in the northbound lanes (the same location as where concrete trucks were staging during slurry wall works). 6-7 trucks will be staged during excavation as required.

### Hours of work:

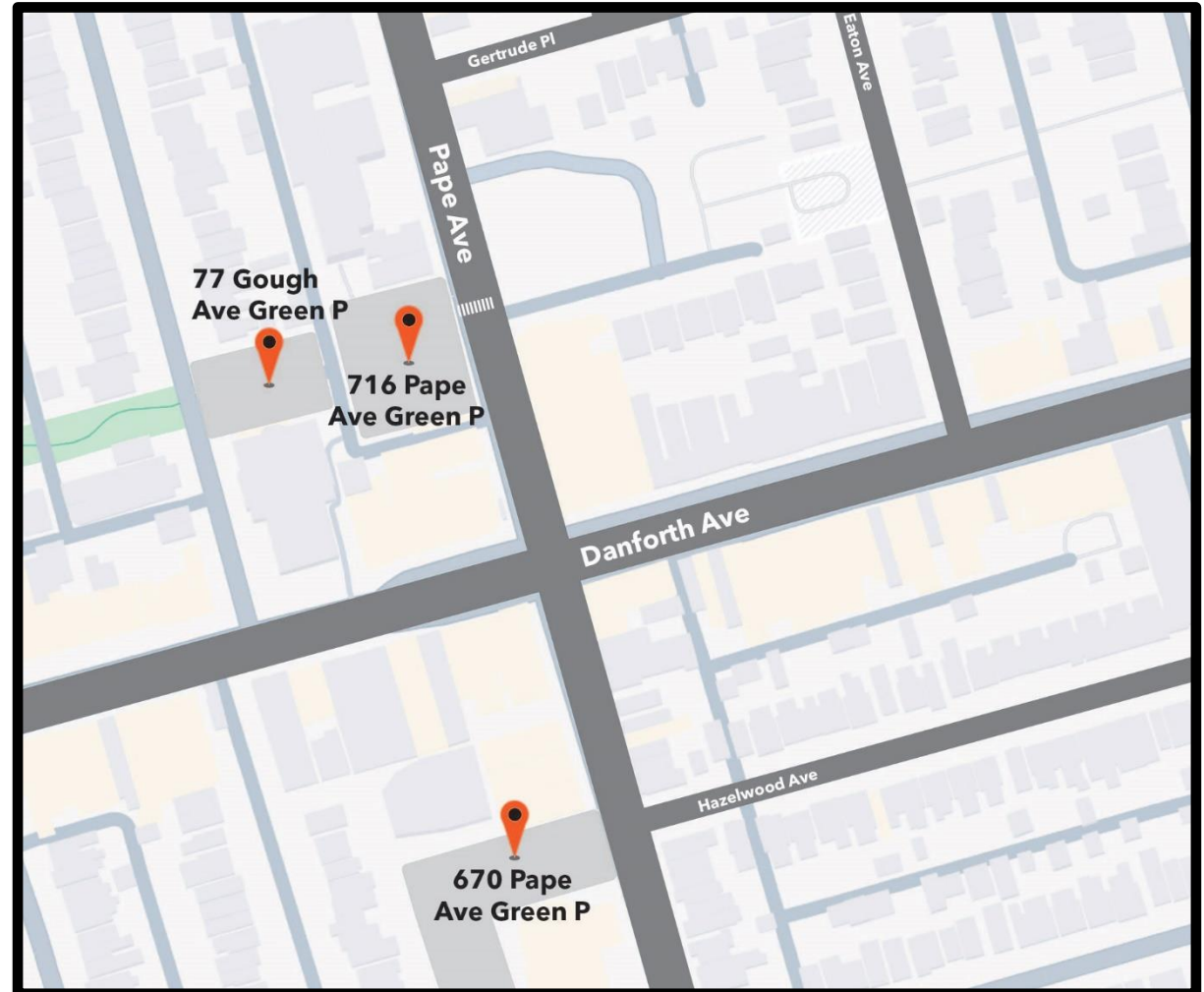
- Excavation until Summer 2025
- Monday - Friday over 24 hours, if required
- Saturdays from 6 a.m. - 7 p.m.

### Dust Mitigations:

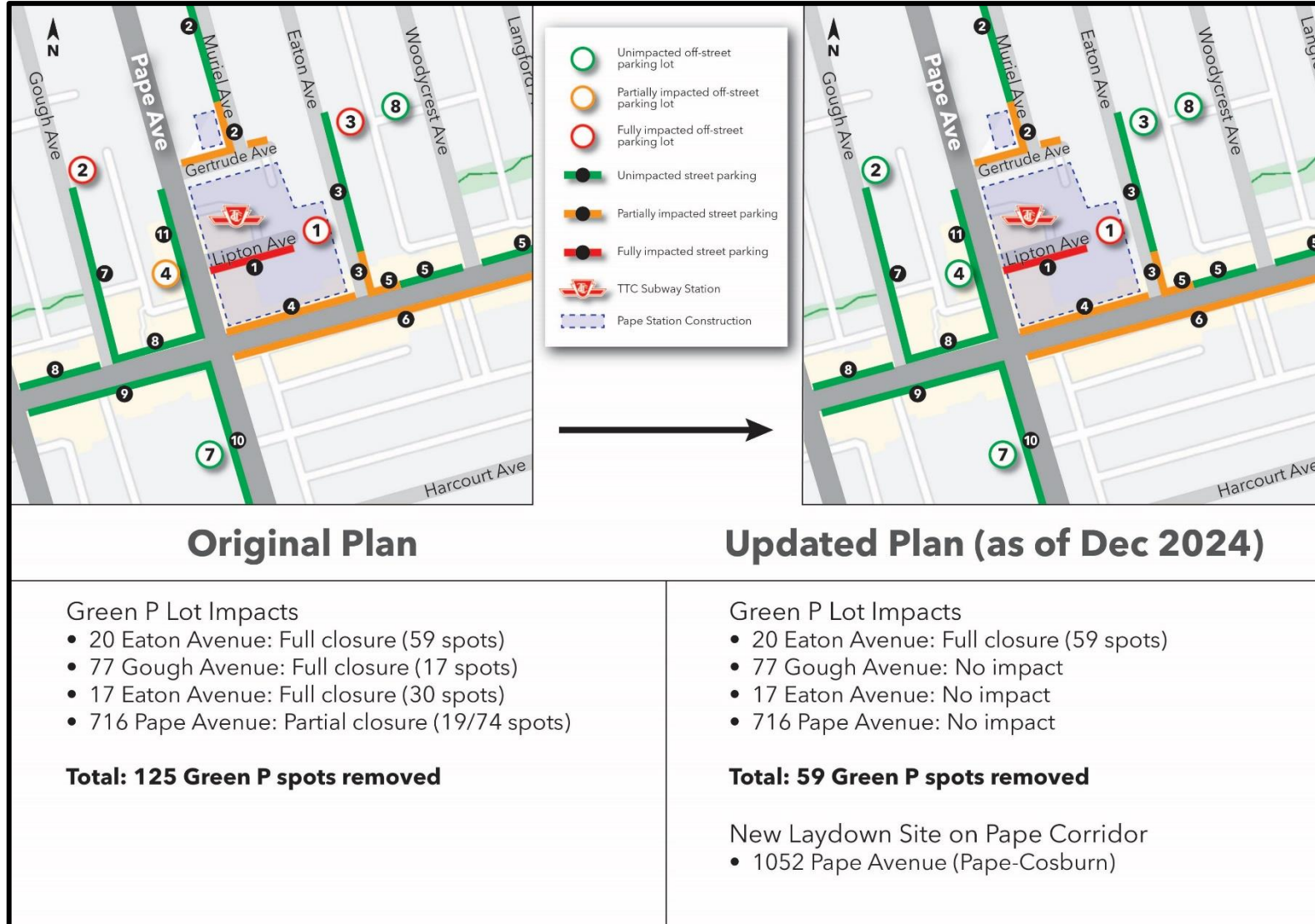
- The Sammon is significantly smaller than the Pape site, giving less space for equipment to move around and generate dust.
- Mud mats will be installed at the Sammon site gate.

## Alternative Parking for Impacted Residents

- In December, Metrolinx and GIP secured permission to purchase a number of long-term parking passes for nearby Green P lots to Pape and Danforth.
- These passes are currently being distributed to residents with City of Toronto parking passes to provide an alternative option.
- The number of passes available is limited due to overall parking constraints in the area. Metrolinx is reaching out to residences located closest to construction parking impacts first, before branching out further.
- Passes are for lots west of Pape where additional capacity was identified. These lots can be seen in the graphic on this slide. Each pass is individualized to a specific lot.



# Green P Parking Availability Improvements



# Registered Exceedances at Noise Receptors: December 2024

No	Day/Time of Exceedances	Detail	Location	Source	Corrective Action	Complaint Received (Y/N)
1	December 2 <sup>nd</sup> to 4 <sup>th</sup>	Noise	Danforth Ave	Slurry Wall Milling Operations	Note 1 : Contractor investigated and confirmed exceedances were minor. Contractor continued to monitor while works continued	N
2	December 6 <sup>th</sup> to 7 <sup>th</sup>	Noise	Eaton Ave, Gertrude Pl, Danforth Ave and Pape Ave	Slurry Wall Milling Operations	Note 1	N
3	December 12 <sup>th</sup> to 14 <sup>th</sup>	Noise	Eaton Ave, Gertrude Pl, Danforth Ave and Pape Ave	Slurry Wall Milling Operations	Note 1	N
4	December 21 <sup>st</sup>	Noise	Eaton Ave and Pape Ave	Minor exceedances that are likely not related to our works as slurry wall and jet grouting operations were not occurring over the holiday season.		N
5	December 28 <sup>th</sup>	Noise	Danforth Ave and Pape Ave	Minor exceedances that are likely not related to our works as slurry wall and jet grouting operations were not occurring over the holiday season.		N

## Action Log

#	Questions Asked / Action Item	Response/Resolution	Due Date / Status
1	Metrolinx will send the December CLC presentation deck to the membership after the meeting and ensure that future presentation decks are sent out prior to the meetings.	We will send out presentations in advance of meetings going forward.	Closed
2	Metrolinx will schedule a meeting with CLC member regarding the water main break to provide further clarity on the investigation, and will provide a follow-up to the broader CLC membership.	Metrolinx is speaking to Toronto Water and is in progress to schedule this meeting.	Open
3	Metrolinx will consider the schedule for excavation at Pape to minimize nighttime noise disruptions to nearby residents.	We are still investigating excavation schedule options and will provide an update in the future.	Open
4	Metrolinx will update residents and the broader CLC membership about parking accommodations for jet grouting work on Gertrude.	Update provided on slide 10.	Closed
5	Metrolinx will further investigate connections between noise complaints and exceedances to ensure that no community complaints are undocumented.	Metrolinx works to ensure that complaints are documented nevertheless, we have started to review past cases to determine if any noise exceedance complaints were missed. Please note that in some cases while community members may experience noise they may be below the thresholds set by Metrolinx.	Open

## Action Log

#	Questions Asked / Action Item	Response/Resolution	Due Date / Status
6	GIP will investigate further improvements to dust mitigation measures.	<ul style="list-style-type: none"> <li>Additional mud mats are being installed at Sammon.</li> <li>Metrolinx is procuring a vendor for residential window washing in the neighbourhood.</li> </ul>	Open
7	Metrolinx will provide high-level information regarding the project's overall and long-term schedule at the next CLC meeting.	<ul style="list-style-type: none"> <li>Metrolinx has provided a construction look ahead for the area near Pape-Danforth going until October 2025. Additional work with future constructors in the area, such as Pape North Connect, is still in design stages, however, we will work to provide more details of the overall projected construction in the Pape-Danforth area in a future CLC.</li> </ul>	Open