

# Land Acknowledgement

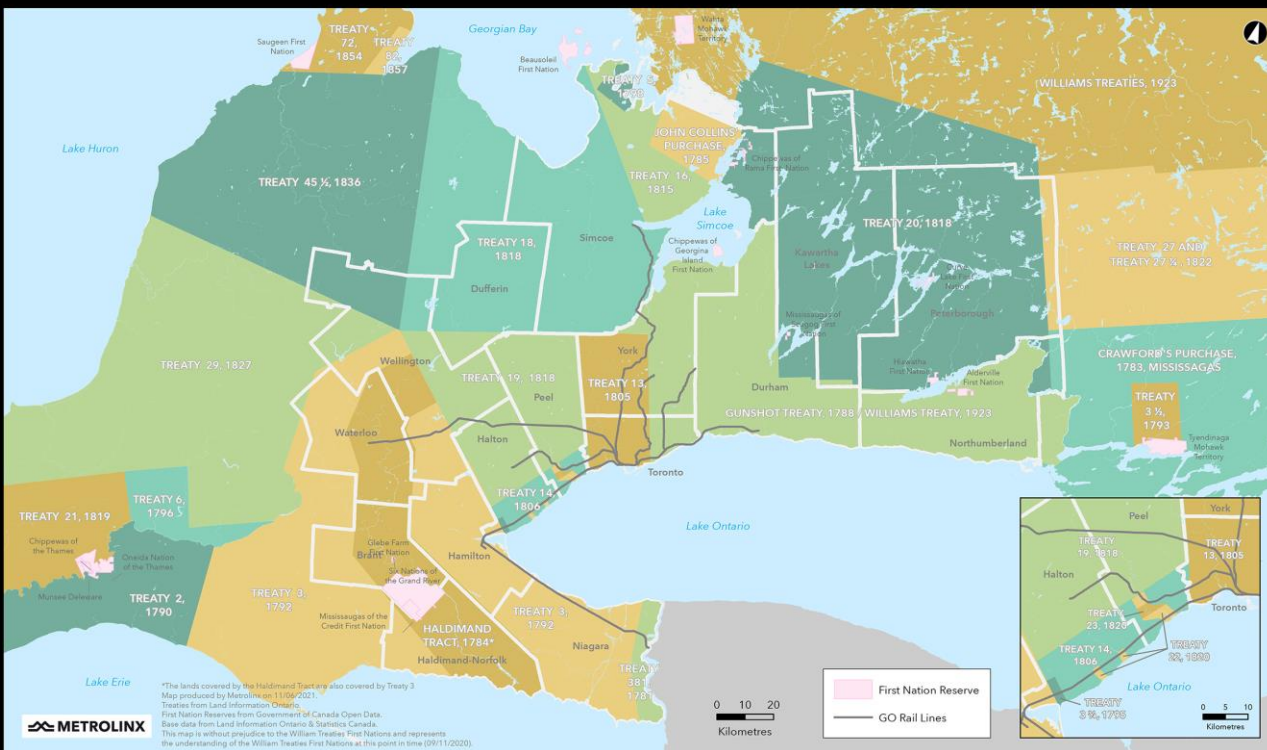
Metrolinx acknowledges that we connect communities by building and operating transit within the traditional lands of the Anishinaabe, the Haudenosaunee and the Huron-Wendat peoples, for whom these lands continue to have great importance.

Treaties between First Nations and governments cover these lands, and the promises contained in these Treaties remain relevant to this day.

Metrolinx and its employees are committed to understanding the history of these lands and the continued impacts of colonization and take responsibility for actions to advance reconciliation.

Metrolinx will continue to seek the knowledge, expertise and experience of Indigenous partners and commits to doing business in a manner that is built on a foundation of trust, respect, and collaboration.

Treaties and Reserves in the Greater Golden Horseshoe



**Construction Liaison Committee**  
**Pape-Cosburn and Minton Place**  
**January 2025**

# AGENDA

## 1. Contracts Overview

## 2. Sewer Relocations

- Work Updates
- Current Staging
- Upcoming Works

## 3. Station Construction

- Cosburn Station Timeline
- Upcoming Demolitions
- Eight Week Look-Ahead

## 4. Portal Construction (Minton Place Portal Works)

- December to January Progress
- Eight Week Look-Ahead

## 5. Bridge Construction (Don Valley Crossing Works)

- December to January Progress
- Eight Week Look-Ahead

## 6. CLC Action Log

## 7. Discussion

# Contracts Overview

## Sewer Relocations

To accommodate the future excavation and construction of Cosburn Station, work is being done to relocate sewer infrastructure to the laneway west of Pape Avenue between Gowan Avenue and Cosburn Avenue. This new sewer will be constructed using a microtunnel boring machine.

**Constructor:** *Clearway Construction Inc.*

**Timeline:** Fall 2024 - Winter 2025



Example: Micro-tunnel under active rail line (Ontario Line work)

## Portal and Bridge Construction

At the north end of Pape Avenue at Minton Place, crews will construct a portal through the side of the Don Valley as part of the Don Valley Crossings (DVC) contract. North of the portal, they will construct two bridges: one connecting Minton Place and Thorncliffe Park, and one connecting Thorncliffe Park and Flemingdon Park.

**Constructor:** Leaside Valley Builders

**Timeline:** 2024-2028



Rendering: Minton Portal and Don Valley Crossing

## Station and Tunnel Construction

The Pape Tunnels and Underground Station (PTUS) constructor will build the stations and other major infrastructure on Pape Avenue, including Cosburn Station, as well as construct the twin bored tunnels under Pape Avenue. At Minton Place, they will take over the portal in late 2026 and finalize construction in the area.

**Constructor:** Pape North Connect

**Timeline:** 2025-2031



Example: Toronto-York Spadina Subway Extension (TYSSE) Tunnel.

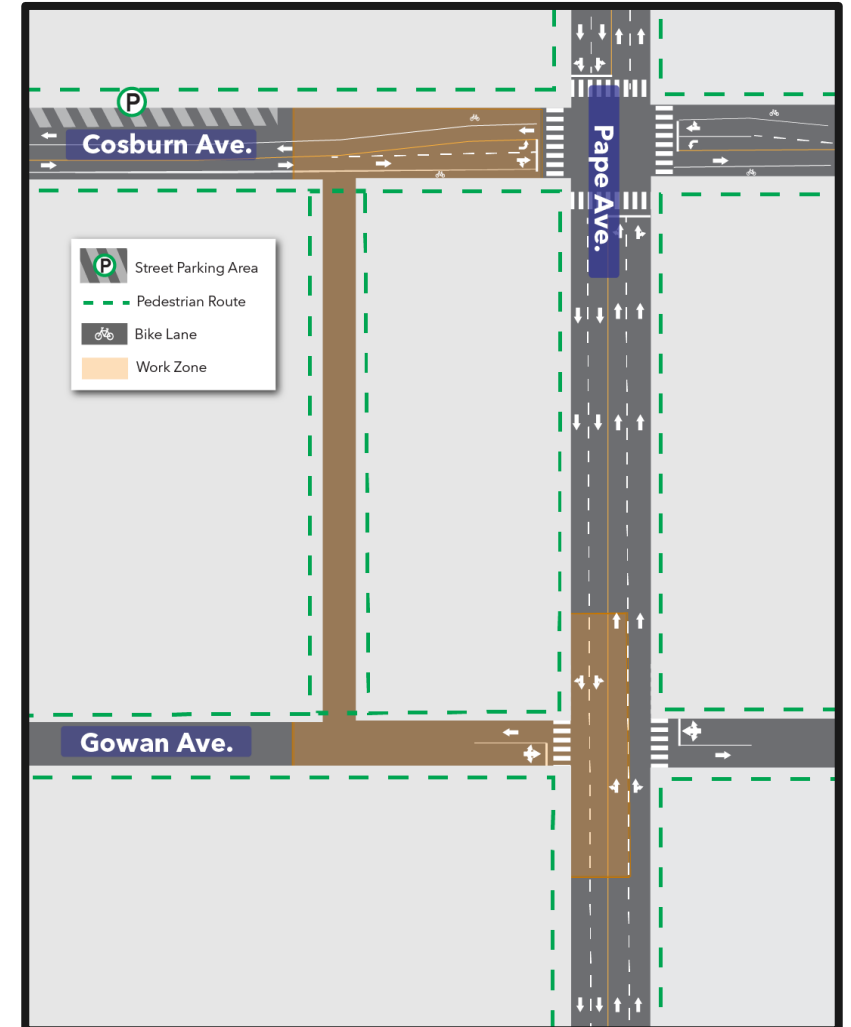
# Sewer Relocations



# Pape-Cosburn Water Main & Sewer Relocation

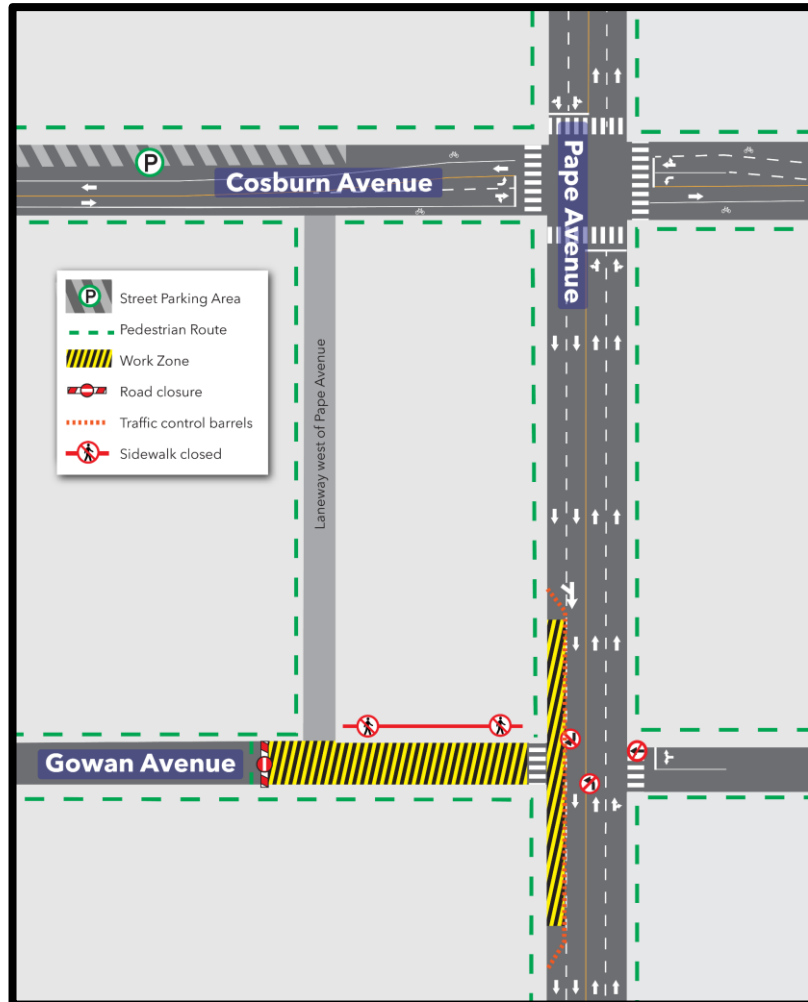
## Updates since December:

- Overnight work was paused in mid-December but resumed January 20.
- Toronto Hydro relocations on Gowan Avenue within the Clearway work zone were completed over the holidays without issue.
- To accommodate construction equipment operations, the lane occupation on Pape Avenue has been extended into February. Work still progresses on the microtunnelling phases.
- Microtunnelling north from Gowan Avenue to Cosburn Avenue began on January 20.
- Due to schedule changes, **the weekend closure of Cosburn Avenue is expected to take place sooner than originally anticipated, from January 31 at 6 a.m. to February 3 at 8 a.m.**
- Following the weekend closure, two lanes on Cosburn Avenue will re-open.



Total footprint of sewer relocation works

# Pape-Cosburn Sewer Relocation - Current Staging



## Ongoing Works:

- Microtunnelling began on January 20 north from the Gowan shaft site towards Cosburn Avenue.
- 24-hour work has restarted on Gowan Avenue after being paused for approximately one month.
  - Trench box installation has been completed, which was the largest noise generator during the overnight work in 2024.
  - Some noise can still be expected overnight. We will monitor and adjust as required.

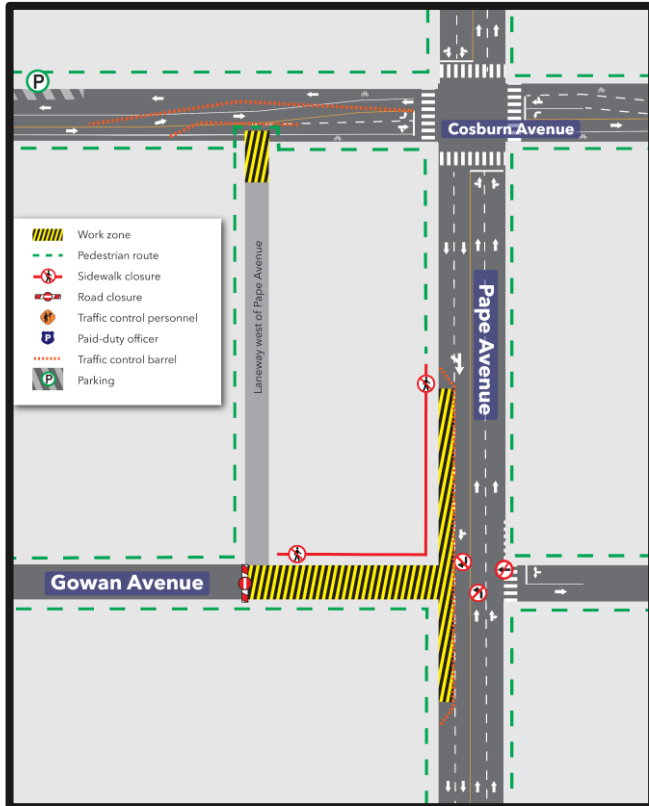
## Key Impacts:

- Curb lane restriction on Pape Avenue.
- Full closure of Gowan Avenue approaching Pape Avenue.
- Laneway entrance closure at Gowan Avenue.
- Sidewalk closure on north side of Gowan Avenue.



# Pape-Cosburn Sewer Relocation - Upcoming Weekend Closure

January 30-31, February 3 morning (8 a.m.)



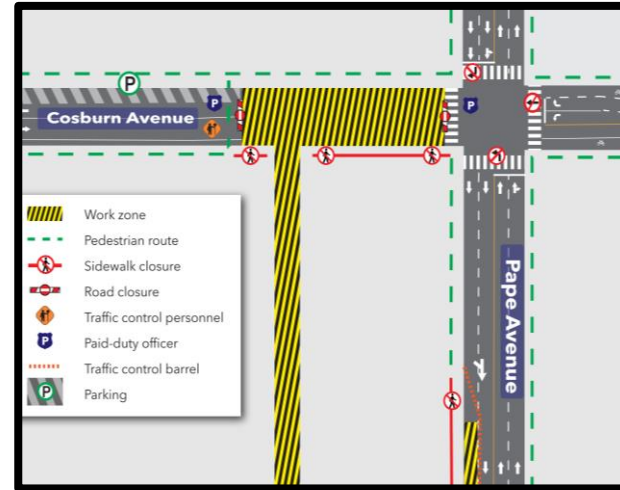
## Work Description:

- Conclusion of sewer tunnelling
- Micro-TBM operations from Gowan Avenue
- **This stage will be in place for one day prior to the closure and will be reinstated after the closure.**

## Key Impacts:

- Full laneway closure to cars (pedestrian access maintained)
- Lane restrictions on Cosburn Avenue (traffic maintained)
- Full closure of Gowan Avenue approaching Pape Avenue
- Minor pedestrian re-rerouting at north end of laneway

Jan 31 morning - Feb 3 morning



## Work Description:

- Extraction of micro TBM
- Connection of new sewer infrastructure to existing infrastructure.
- **Current estimated date is January 31 - Feb 3.**

## Key Impacts:

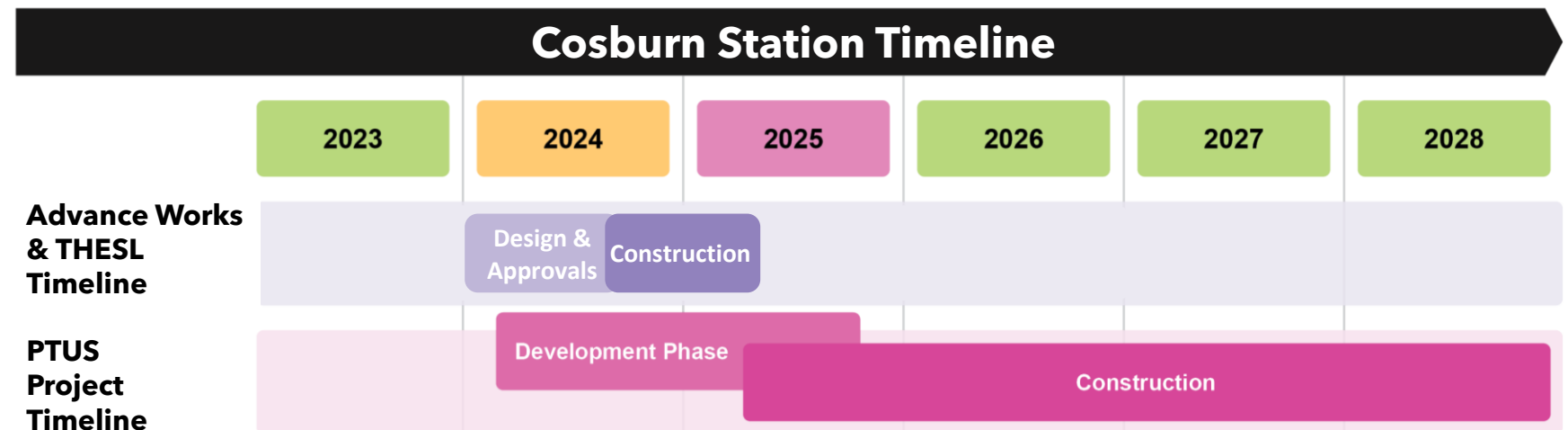
- Full closure of Cosburn Avenue
- Continue closure of work at Gowan Avenue
- Closure of south sidewalk on Cosburn Avenue
- TTC detour - 87 Cosburn via Broadview, O'Connor, and Pape.
- Three paid-duty officers will be on site during the closure.

# Station Construction

# Cosburn Station Timeline

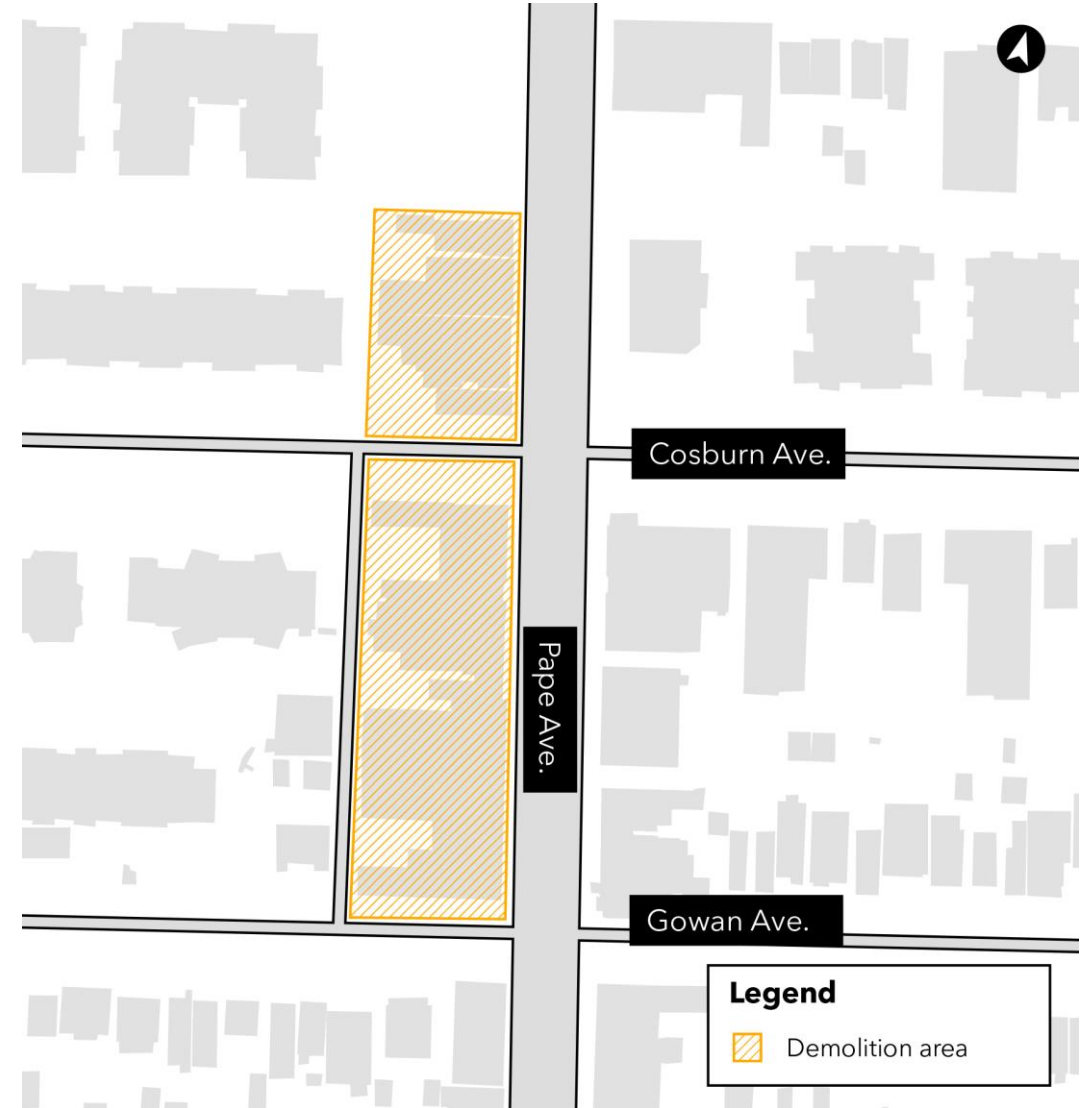
- In the coming months, teams will begin advanced utilities relocations, install temporary fencing and remove vegetation to clear the way for major station construction activities handled by the PTUS project.
- Prior to major station construction, the PTUS project is in the *development phase*, which involves advancing design and determining methodology for construction. During this phase, the PTUS contractor is undertaking the following preparatory activities:
  - Progressing engineering design
  - Environmental surveys and sampling

**Construction of the PTUS project is anticipated to begin at Cosburn Station with fencing installation as early as February 2025.**



## Upcoming Demolitions

- The northwest corner of Pape Avenue and Cosburn Avenue is the future site of Cosburn Station.
- To accommodate construction activities for Cosburn Station, crews are demolishing 20 Metrolinx-owned properties on Pape Avenue, north and south of Cosburn Avenue.
- Utility disconnections, abatement work (removal of potentially sensitive materials), and interior demolition will take place in advance of the demolition of the full structures. Utility disconnection work will require short-term lane closures.
- Abatement and utility disconnections followed by structural demolitions will take approximately 4 to 5 months.
- Work will begin with abatement in March.



*Properties to be demolished are highlighted in yellow.*

## Upcoming Demolitions

- TTC bus service will be maintained throughout the work.
- Signage and safety barriers will be in place to delineate work zones.
- Work will take place during the day, from 7 a.m. to 7 p.m.
- Timing of construction is subject to weather conditions and unforeseen circumstances.

## What's Next?

- The Cosburn Avenue site will begin slurry wall construction to install excavation supports in 2025.
- These excavation activities will be in preparation for the construction of Cosburn Station.



*Artist's rendering - subject to change. Future Ontario Line station entrance on the northwest corner of Pape Avenue and Cosburn*

## Eight Week Look-Ahead: January 22 - March 19, 2025

#	Activity	Location	Expected Start	Expected Duration	Impact	Hours of Work	Mitigations
1	Short term fencing and mesh dust screen installation	Cosburn site	Late January/Early February 2025	3 to 4 months	Minor noise	7 a.m. to 7 p.m.	N/A
2	Borehole and subsurface investigations	Cosburn site	Started/Ongoing	4 to 5 months	Noise and vibration		Dust mitigation includes misting, sweeping and hydrovac trucks. Erosion and sediment control.
3	Utility disconnections	Cosburn site	To restart in March 2025	3 to 4 months	Vibration, noise, air quality, lane and sidewalk closures		
4	Abatement	Cosburn site	February/Early March 2025	2 months	Work to take place within buildings		N/A

*Note: all dates and times are subject to change as construction planning progresses*



## Eight Week Look-Ahead: January 22 - March 19, 2025

#	Activity	Location	Expected Start	Expected Duration	Impact	Hours of Work	Mitigations
5	Tree protection/ removal	Cosburn site	Spring 2025	~1 month	Noise and sidewalk closures	7 a.m. to 7 p.m.	N/A
6	Demolition	Cosburn site	March-May 2025	3 to 4 months	Vibration, noise, air quality, traffic, lane and sidewalk closures		Noise, vibration and air quality monitoring. Temporary fencing with mesh dust screens. Dust mitigation includes mud mats, street spraying and sweeping, work stoppage during high winds

*Note: all dates and times are subject to change as construction planning progresses*

# Minton Place Portal Works

## Minton Portal - December to January Progress

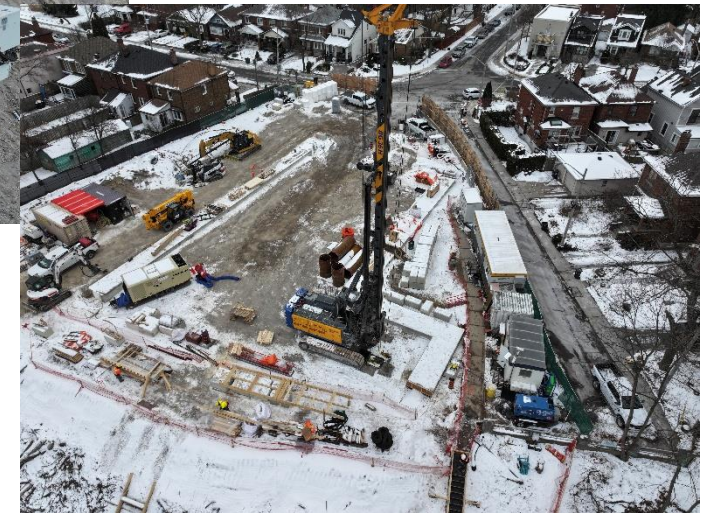
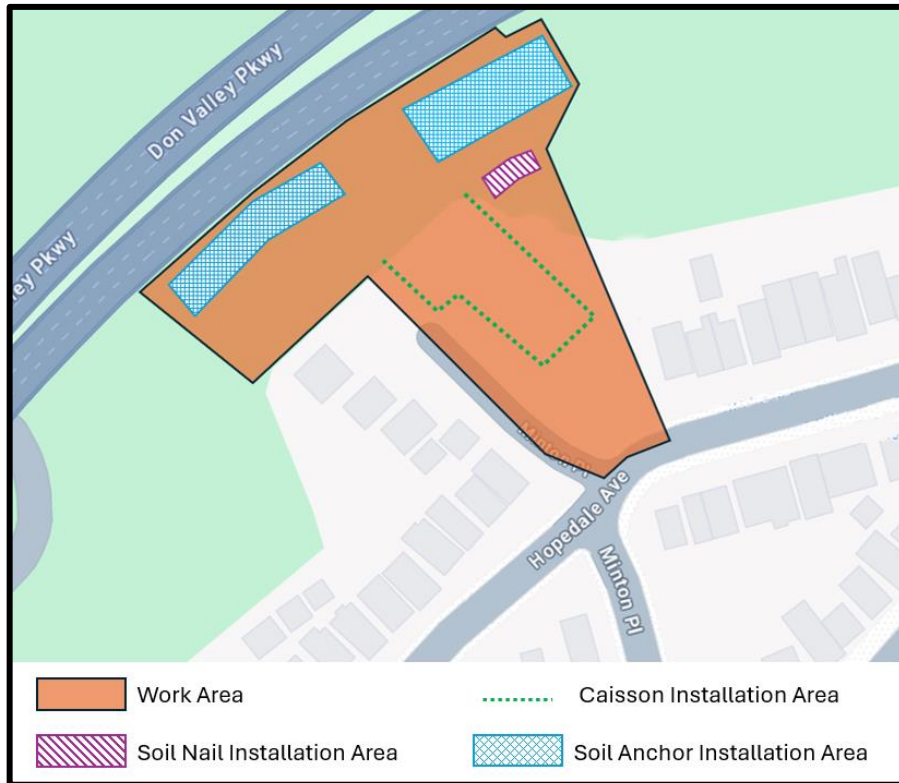
- Both environmental and geotechnical monitoring instrumentation install has been completed.
- Compaction of granular within work area to create an engineered crane pad platform has completed.
- Concrete barriers have been placed and wooden hoarding has been erected to delineate work area.
- Secant pile installation and localized concrete pours have occurred.
- Slope soil nail and soil anchor installation has commenced.
- Further equipment mobilization for secant pile works and slope stabilization works is ongoing.





# Minton Portal - December to January Progress

- Caisson installation work as well as soil nail and soil anchor installation work continue at the Minton Place Portal construction site. See map below for more. These works could result in extended working hours until 7 p.m. throughout the week and will require weekend works from 9 a.m. to 7 p.m. on Saturdays. See photos as well for soil nail installation on the slop of the Minton Place Portal construction site, and the drill rig to be used for caisson installation.



## Eight Week Look-Ahead: January 22 - March 19, 2025

#	Activity	Location	Expected Start	Expected Duration	Impact	Hours of Work*	Mitigations
1	Zone 1 Secant Pile Installation	Minton Portal	December 18, 2024	1 year	Vehicular traffic, vibration, noise	7 a.m. to 7 p.m. Saturdays: 9 a.m. to 7 p.m.	Monitoring of traffic control plans, traffic control personnel, vibration monitoring, noise monitoring
2	Slope soil nails and soil anchors	Minton Portal	December 15, 2024	8 months	Vehicular traffic, vibration, noise	7 a.m. to 7 p.m. Saturdays: 9 a.m. to 7 p.m.	Monitoring of traffic control plans, traffic control personnel, vibration monitoring, noise monitoring
3	Mobilization of cranes to site	Minton Portal	February 3, 2025	1 Week	Traffic restrictions . Vibration, noise	7 a.m. to 5:30 p.m.	Monitoring of traffic control plans, traffic control personnel, vibration monitoring, noise monitoring

\*Hours of work are being extended, notification being sent to community.

*Note: all dates are subject to change as construction planning progresses*

## Exceedances December 2024

#	Day/Time of Exceedances	Detail	Location	Source	Corrective Action	Complaint Received?
1	Tuesday, December 17, 2024, Afternoon	Air quality	Minton Portal	Soil nailing work	Installed deflector 5-gallon bucket to help contain the dust being generated	No
2	Thursday, December 19, 2024, Morning	Air quality	Minton Portal	Soil nailing work	Stopped the work and applied some water spray to suppress the dust.	No

**Please note:** There were no registered noise exceedances in December 2024.



# Don Valley Crossing Works

## Don Valley Crossing – December to January Progress

- Access and laydown areas are being established for four of the five piers, with excavation of the access road continuing at Piers A4 and A5.
- Excavation work is progressing in the laydown areas for four of the five piers.
- Soil nailing operations have commenced, with preparations for rebar installation and shotcrete, in anticipation of slope stabilization activities at Pier A3.
- Traffic control measures, including the installation of traffic lights on Redway Road, are in place to efficiently manage traffic flow leading to the Don Valley Crossing work zones.
- Erosion control measures have been installed throughout the entire work area.



## Don Valley Crossing – Upcoming Works

#	Activity	Location	Expected Start	Expected Duration	Impact	Hours of Work	Mitigations
1	Clearing and grubbing and environmental control installation	Don Valley Crossing	October 25, 2024	May 13, 2025	Noise, air quality	7 a.m. to 5:30 p.m.	Monitoring noise and air quality levels. Enacting noise mitigation controls and dust suppression as required.
2	Access Road Construction	Don Valley Crossing (Piers A2, A4, A5)	October 30, 2024	February 21, 2025	Noise, Vibration, Air Quality	7 a.m. to 5:30pm	Monitoring noise, vibration, and air quality levels. Enacting noise and vibration mitigation controls and dust suppression as required.
3	Slope Stabilization	Don Valley Crossing (Pier A3)	January 6, 2025	August 11, 2025	Noise, Vibration, Air Quality	7 a.m. to 7 p.m.	Monitoring noise, vibration, and air quality levels. Enacting noise and vibration mitigation controls and dust suppression as required.
4	Pier Piling	Don Valley Crossing (Pier A2)	February 26, 2025	April 25, 2025	Noise, Vibration, Air Quality	7 a.m. to 7 p.m.	Monitoring noise, vibration, and air quality levels. Enacting noise and vibration mitigation controls and dust suppression as required.

# Action Log

## Action Items: November 20, 2024 CLC

#	Questions Asked / Action Item	Response/Resolution	Due Date / Status
1	Metrolinx to review the possibility of permanent noise barriers at Minton Place to minimize noise from Don Valley Parkway.	<ul style="list-style-type: none"> <li>Metrolinx is providing a noise barrier to protect against the noise from our trains exiting the Minton Place portal. Metrolinx did not have plans for a noise barrier to focused on the Don Valley Parkway. A study would be required to determine if a localized noise barrier would materially mitigate the noise from the Parkway. Currently a noise barrier for the DVP is not within the scope of the Ontario Line project. A parkette is within scope.</li> </ul>	Open
2	Concerns were raised about the disruption of business at Cosburn and Gowan area due to construction fencing.	<ul style="list-style-type: none"> <li>“Open for Business” signage has been installed on the construction fencing near the Cosburn and Gowan area.</li> <li>Metrolinx will work with individual businesses on concerns that are raised, including working with them on parking constraints, garbage collection and others. Businesses can also contact Metrolinx with any business loss concerns, we will work with the businesses on a case-by-case basis.</li> </ul>	Closed
3	Concerns were raised related to traffic safety in the area, particularly with closed sidewalks.	<ul style="list-style-type: none"> <li>Signage has been provided to direct pedestrians to safe crossing areas.</li> <li>During the weekend Cosburn closure, there will be three paid duty officers, advanced signage, and traffic control personnel to direct vehicle and pedestrians.</li> <li>Metrolinx and Toronto Hydro have coordinated work to reduce nearby sidewalk impacts by postponing hydro work with associated closures.</li> </ul>	Closed
4	Concerns were raised about proactive pest-control measures prior to demolition of buildings	<ul style="list-style-type: none"> <li>PNC is working with their demolition subcontractor to develop and implement a pest control plan.</li> </ul>	Closed



## Action Items: November 20, 2024 CLC

#	Questions Asked / Action Item	Response/Resolution	Due Date / Status
5	Access for garbage collection near Pape and Gowan area was raised as an issue.	<ul style="list-style-type: none"> <li>Garbage collection has been supported with Clearway (Construction company in the area) collecting garbage from any properties where driveway access has been blocked.</li> </ul>	Closed
6	Concerns were raised about noise during the overnight periods.	<ul style="list-style-type: none"> <li>Work is taking place 24 hours a day, but the loudest work (trench box installation for sewers) is now complete and the remaining work should be less impactful. Metrolinx is working with Clearway to schedule louder works during daytime hours.</li> </ul>	Closed



## Action Items: Minton Place Site Walk December 11, 2024

#	Questions Asked / Action Item	Response/Resolution	Due Date / Status
1	Request to provide details on the process for submitting damage claims.	<ul style="list-style-type: none"> <li>If community members have concerns about damage that they think occurred as a result of Ontario Line construction activities, then please send an email to <a href="mailto:ontarioline@metrolinx.com">ontarioline@metrolinx.com</a> indicating that you have concerns regarding a damage claim.</li> <li>A Community Engagement team member will follow-up to the email and ask you to provide more details of the concern, including any documentation you may have.</li> <li>Once provided this information will be shared with our constructors to investigate and to determine if further action is necessary.</li> <li>The constructor will finish the follow-up with the community member who raised the concern.</li> </ul>	Closed
2	Minton Place residents requested a Metrolinx representative discuss with them the expected vibration impacts during tunnel boring.	<ul style="list-style-type: none"> <li>Metrolinx and PNC will be doing engagements in the future to discuss TBM impacts and timelines. At this point, we are still in the procurement process for the tunnel boring machines and cannot provide specific details. Note that TBMs will not be passing under Minton place for a few years.</li> </ul>	On Hold
3	Community members would like to understand how vibrations are measured and what is considered an exceedance or not.	<ul style="list-style-type: none"> <li>Metrolinx will provide information on how vibrations are measured and what is considered an exceedance in a future CLC.</li> </ul>	Open

## Action Items: Minton Place Site Walk December 11, 2024

#	Questions Asked / Action Item	Response/Resolution	Due Date / Status
4	Metrolinx to provide individual results of pre-construction surveys to residents	<ul style="list-style-type: none"> <li>Community members are requested to reach out directly to the CE team at <a href="mailto:ontarioline@metrolinx.com">ontarioline@metrolinx.com</a> to request the results of pre-construction surveys (PCS); from there Metrolinx will determine if the PCS are available for release.</li> </ul>	Closed
5	Community members wanted to understand how Metrolinx will be held accountable for any cracks or damage they have noticed.	<ul style="list-style-type: none"> <li>Metrolinx requests any community members that have noticed cracks or other damage, which they believe to be the result of Ontario Line construction, to please reach out the CE team.</li> <li>As noted in #1, the investigation of the damage claim will be forwarded to our constructors for their action. If damages are determined to be caused by the Ontario Line construction activities, then our constructors are required to respond and action those claims.</li> </ul>	Open
6	Metrolinx was requested to provide vibration data from July 20/21, 2024, at the AQ S1 monitoring station.	<ul style="list-style-type: none"> <li>Metrolinx will follow-up with the community member directly on this request.</li> </ul>	Open

# Questions