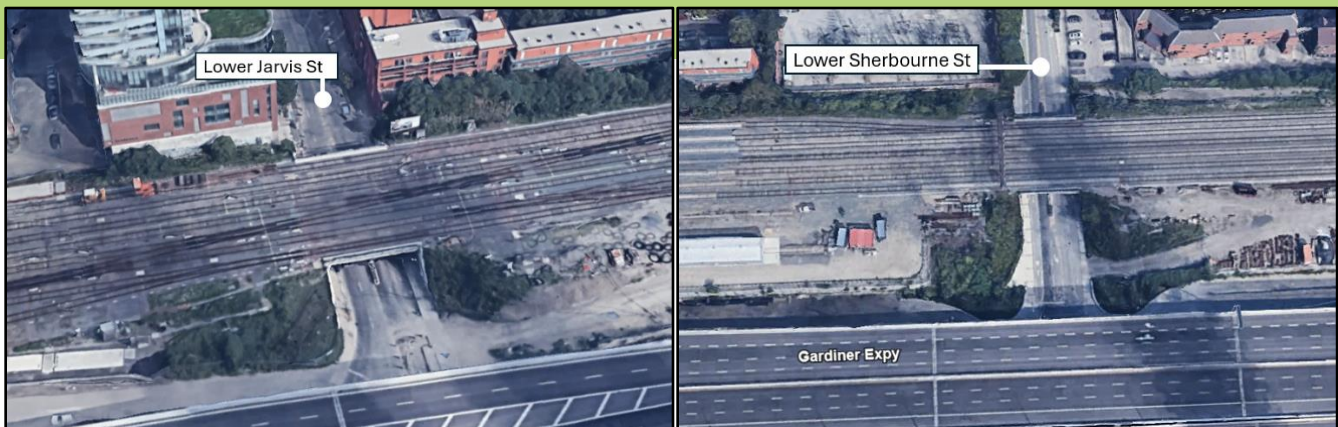


Ongoing Construction Activities and Traffic Impacts on Lower Jarvis Street and Lower Sherbourne Street

Continuing into July 2025



As part of the Union Station Enhancement Project, construction activities at Union Station and within the Union Station Rail Corridor (USRC) are being completed in phases to deliver the required infrastructure needed to bring two-way, all-day rail service.

We have been removing and relocating infrastructure on the south side of the Union Station Rail Corridor east of Union Station and reinforcing the corridor to support the widening of the Jarvis and Sherbourne rail bridges to accommodate future increased track and transit capacity.

Continuing to July 31, 2025, there will be increased construction activity at street level on the south side of Lower Jarvis Street and Lower Sherbourne Street., There will be closures to traffic lanes, sidewalks, and bike lanes to accommodate these complex activities.

Questions

If you have any questions or concerns about this work, please contact us any time at TorontoEast@metrolinx.com or (416) 202-3900. For more information on GO Expansion in your community, visit our website at [Metrolinx.com/GoExpansion](https://www.metrolinx.com/GoExpansion).

Please scan the QR Code above to subscribe to our weekly e-Newsletter for updates.



SCAN ME

We appreciate your ongoing patience and understanding of this necessary work. Dates subject to change.

Updated February 27, 2025