

Environmental Site Studies at Yonge Street and Steeles Avenue East

Scheduled work period: Spring-Summer 2025

Timing: 8:00 a.m. to 6:00 p.m.

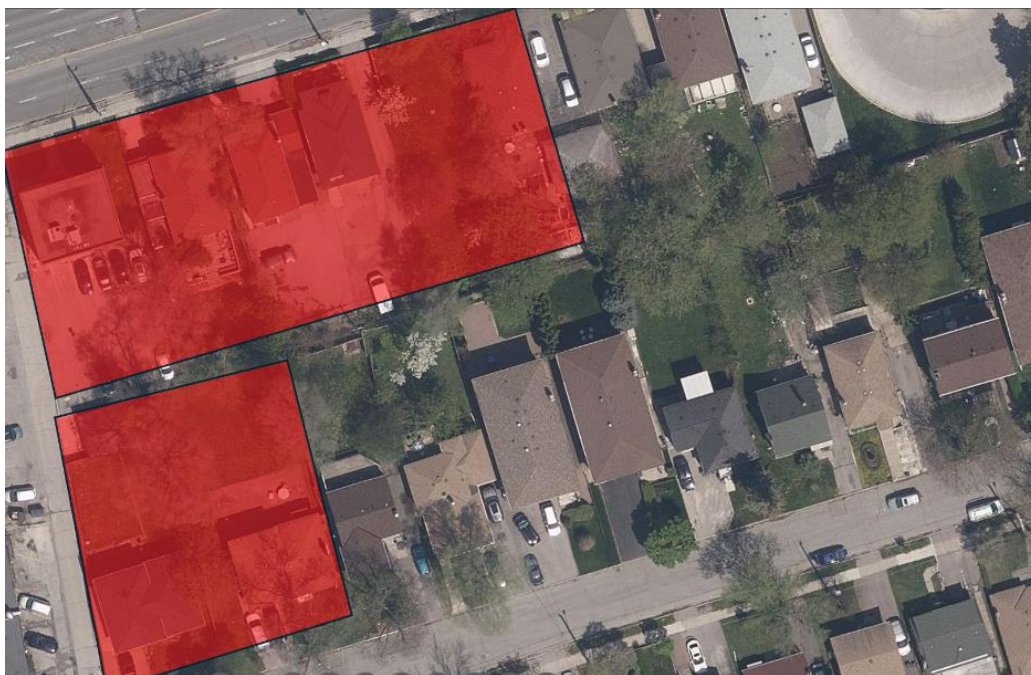


Figure 1: The approximate work zones for environmental assessments. Map is not to scale and for illustrative purposes only.

What is happening?

Metrolinx will conduct various environmental studies at several properties in the Yonge Street and Steeles Avenue East-area. This assessment is critical for supporting preparatory activities and planning for future construction.

Work Activity:	Work Date:	Working Hours:	Work Details:
Designated Substances and Hazardous Materials Survey	May - July 2025	8:00am - 5:00pm	Crews will inspect the buildings and collect samples from wall paint, caulking tiles or roof for designated substances and hazardous materials identification using hand tools. Roof access via a ladder may be required.
Species at Risk Assessment	April - June 2025	8:00am - Dusk	Crews will visually inspect sites using binoculars and cameras for possible wildlife habitat. Roof access via a ladder may be required for chimney access.
Tree Inventory	April - June 2025	8:00am - 5:00pm	Crews will visually inspect and measure trees on the property using handheld devices.
Vibration Monitoring	April - June 2025	8:00am - 5:00pm	Crews will conduct vibration monitoring on site using handheld equipment. Monitoring equipment is non-invasive however equipment may be left on site overnight for a series of days (estimated 72 hours).
Phase 1 Environmental Assessment (ESA)	April - June 2025	8:00am-5:00pm	Visual inspection of site interiors and exteriors for environmental concerns.
Stage 2 Archaeology Assessment	May - June 2025	8:00am-5:00pm	Crews will conduct test pit survey including digging small (30 cm) test pits every 5 m across landscaped areas of the properties. If artifacts are found, additional excavation (including 1 x 1 m test units) may be required.

Contact Us:

Call us at: 416-202-7000

✉ Write to us at: YongeSubwayExt@metrolinx.com

📍 Find us on social media [@YongeSubwayExt](https://twitter.com/YongeSubwayExt)

🌐 Visit the website: www.metrolinx.com/YongeSubwayExt

Disponible en français sur demande. Si vous êtes intéressé, veuillez envoyer un courriel à YongeSubwayExt@metrolinx.com.