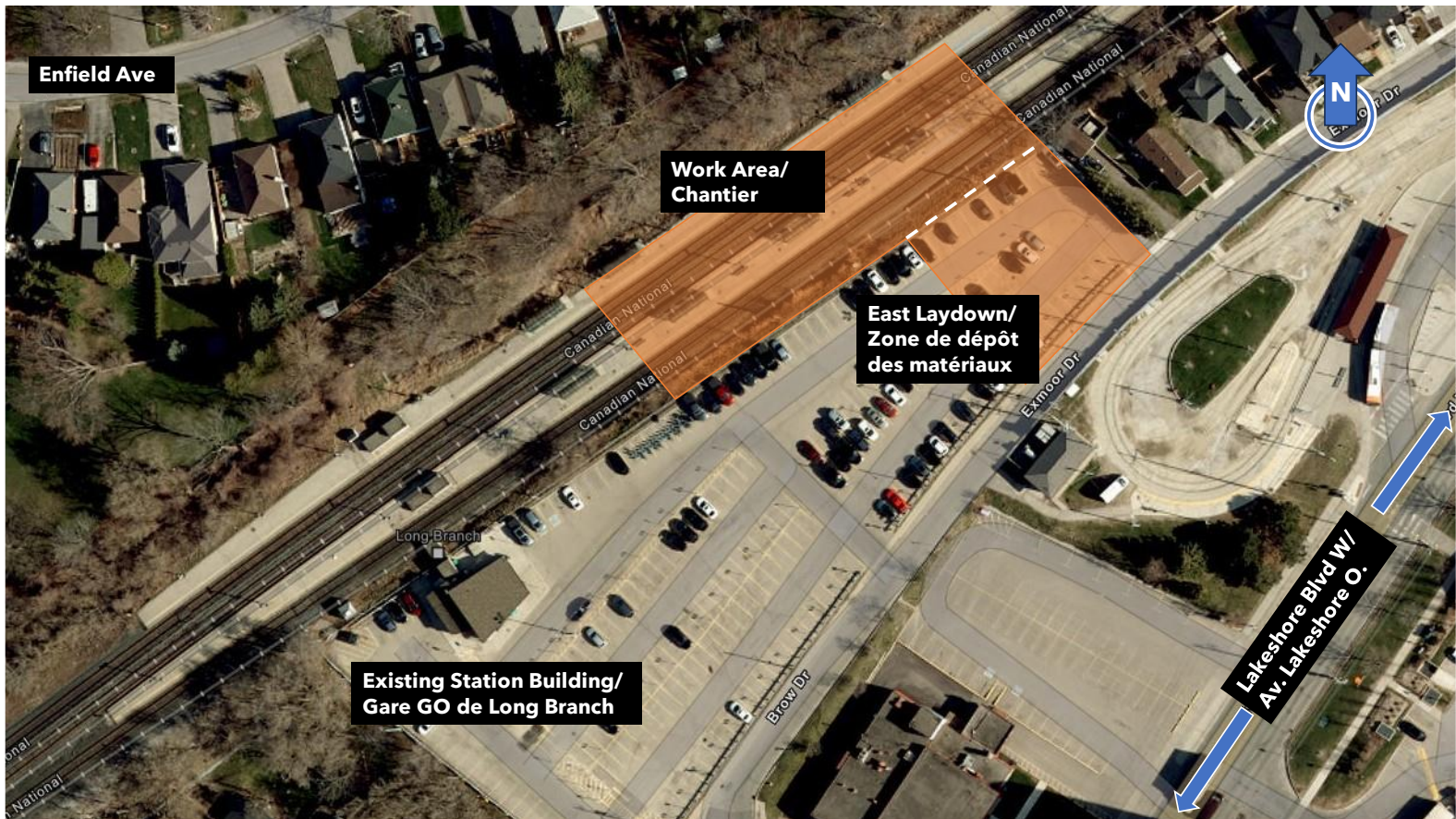


# Long Branch GO: Overnight Track Work

April 11-14, 2025



Aerial image showing the work area. The work area is at the northeastern part of the site. *Please note: the size and boundaries of the site shown are approximate.*

## What Is Happening

There will be a minor track closure over the weekend of April 11-14. Over the weekend, crew members will be removing track, digging trenches for utilities, and then reinstalling track. Additionally, crew members will also be installing mechanical and electrical utilities on the south platforms and will be crossing these utilities underneath Track 3. To complete this work during the weekend track closure, overnight work will be needed.

On Saturday and Sunday (April 12-13) GO Trains will operate an hourly schedule on the Lakeshore West railway corridor. Please check and plan your trip in advance at:

<https://www.gotransit.com/en/plan-your-trip>

## Project Overview

Metrolinx's GO Expansion program is delivering more GO service across the network, including trains every 15- minutes or better on the Lakeshore West Rail Corridor. To support GO Expansion, we are upgrading the rail network and our GO stations to enable more frequent and fully accessible service. This includes accessibility and amenity improvements to Toronto's Long Branch GO Station located at 20 Brow Drive in Etobicoke.

---

### WHAT TO EXPECT

- Construction crews will be occupying Track 2 and 3 with excavators to move track panels and dig the trenches for the utilities. Compaction equipment will then be used to reinstate the ground and reinstall the track.
- Residents should expect some noise, along with, vibration, dust, and site lighting.
- Our staff will take reasonable precautions to minimize disturbances to residents, including but not limited to the following:
  - Reduced idling of non-essential equipment
  - Pointing lights away from residential windows
  - The work area will be safely delineated and within the rail corridor

### HOURS OF WORK

- Work for the weekend closure will start at 10:00 pm on Friday, April 11<sup>th</sup> and be completed at 5:00 am on Monday, April 14<sup>th</sup>.
  - Overnight hours will apply (7:00 pm - 7:00 am)

### LOCATION OF WORK

- Work will be taking place on the East side of the station within our laydown area and the rail corridor - as shown on page 1.

### PEDESTRIAN DETAILS

- The South platform will not be operational this weekend.

### TRAFFIC DETAILS

- Please be aware that there will be an increase in the number of construction vehicles accessing the site over the weekend.

### TRANSIT INFORMATION

- Lakeshore West train service will operate on an hourly schedule.

### COMMUNITY ENGAGEMENT

- Metrolinx has a dedicated community engagement team in place that works with residents and businesses in the Toronto West area.
- If you have any questions, please contact us using the information provided below

### Information as of: March 17, 2024

This notice can be translated into a different language upon request by emailing us at: [torontowest@metrolinx.com](mailto:torontowest@metrolinx.com)

Veillez trouver l'avis de construction en français ici : [www.metrolinx.com/lakeshorewest-docs-fr](http://www.metrolinx.com/lakeshorewest-docs-fr)

#### Contact Us:

Call us: 416-202-6911

✉ Write to us at: [torontowest@metrolinx.com](mailto:torontowest@metrolinx.com)

✂ Find us on Twitter [@GOExpansion](https://twitter.com/GOExpansion)

🌐 Visit the website: [metrolinx.com/longbranch](http://metrolinx.com/longbranch)

🌐 Subscribe to our e-blast: [metrolinx.com/subscribe](http://metrolinx.com/subscribe)