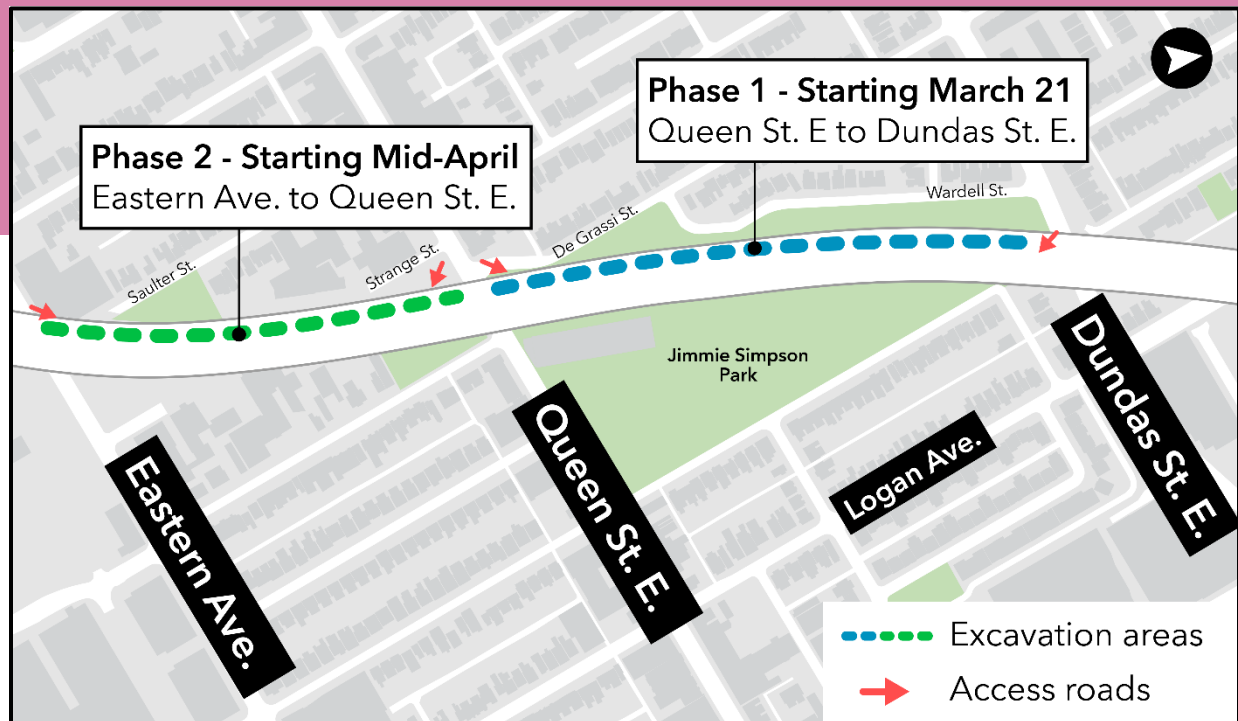


Start of excavation work between Eastern Avenue and Dundas Street East

Dates: Starting as early as Friday March 21, 2025 until mid-July 2025

Hours of work and duration: Monday to Friday, between 7 a.m. and 7 p.m.



What is happening?

- Excavation will begin on the west side of the Lakeshore East rail corridor between Queen Street East and Dundas Street East as early as Friday, March 21, 2025.
- Tieback installations will begin shortly after in the same area on Monday March 31, 2025.
- Excavation and tieback installations are the first construction activities required to build the new retaining walls.
- Excavation work between Eastern Avenue and Queen Street will begin in mid-April 2025.
- This work will take place Monday - Friday between 7 a.m. and 7p.m. until mid-July 2025; weekend work may be required to complete critical activities - advance notice will be provided for weekend work.
- Crews will use excavators to dig down the existing embankment within the rail corridor.
- As the excavation progresses, drills will be used to install tiebacks (metal rods) that will support the excavation
- These two activities will take place within the rail corridor

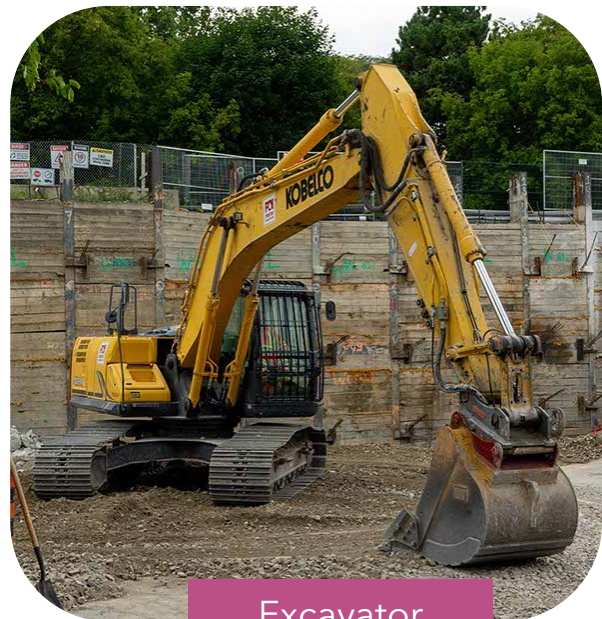
- Once the excavation work is complete, concrete and granular material will be placed and compacted to create a foundation for the new retaining walls
- Pre-cast concrete blocks (T-walls) will then be installed to form the new retaining walls

What to expect

- Excavators, loaders, and dump trucks will excavate the west side of the rail corridor. Tieback drills will be used to install tiebacks into the secant wall.
- Construction vehicles will enter and exit the rail corridor from the existing access road at Eastern Avenue.
- Concrete chipping will be required at the start of excavation in each area to smooth out the top of the piles.
- As excavation progresses, new access roads will be built at Queen Street East and De Grassi Street, Queen Street East and Strange Street, and Dundas Street East and Wardell Street. These access roads will be completed in approximately mid-April 2025.
- Separate notices will be issued for access road construction.
- Noise and vibration from construction equipment, including excavators, loaders, dump trucks, skid steerers, tieback drills, rollers, and hand tampers can be expected.
- Monitoring instruments are in place to ensure that noise and vibration levels stay within acceptable limits.
- Construction equipment and materials will be properly secured within the work zone.
- This work may be delayed or rescheduled due to inclement weather and/or unforeseen circumstances.



Tieback drill



Excavator

Contact us:

Call us 24/7 at: [416-202-5100](tel:416-202-5100)

Write to us at: ontarioline@metrolinx.com

Find us on X(Twitter), Facebook, and

Instagram: [@ontarioline](https://www.instagram.com/ontarioline)

Visit the website:

www.metrolinx.com/ontarioline

Visit our community offices:

770 Queen Street East (near Queen & Broadview)

General hours:

Mondays, Tuesdays, and Fridays: 9 a.m. to 5 p.m.

Wednesdays and Thursdays: 10 a.m. to 6 p.m.

Thornciffe Park:

East York Town Centre

45 Overlea Blvd., Toronto, ON M4H 1C3

Unit 153 (across from the Rogers store)

General hours:

Monday to Friday, 9 a.m. to 5 p.m.