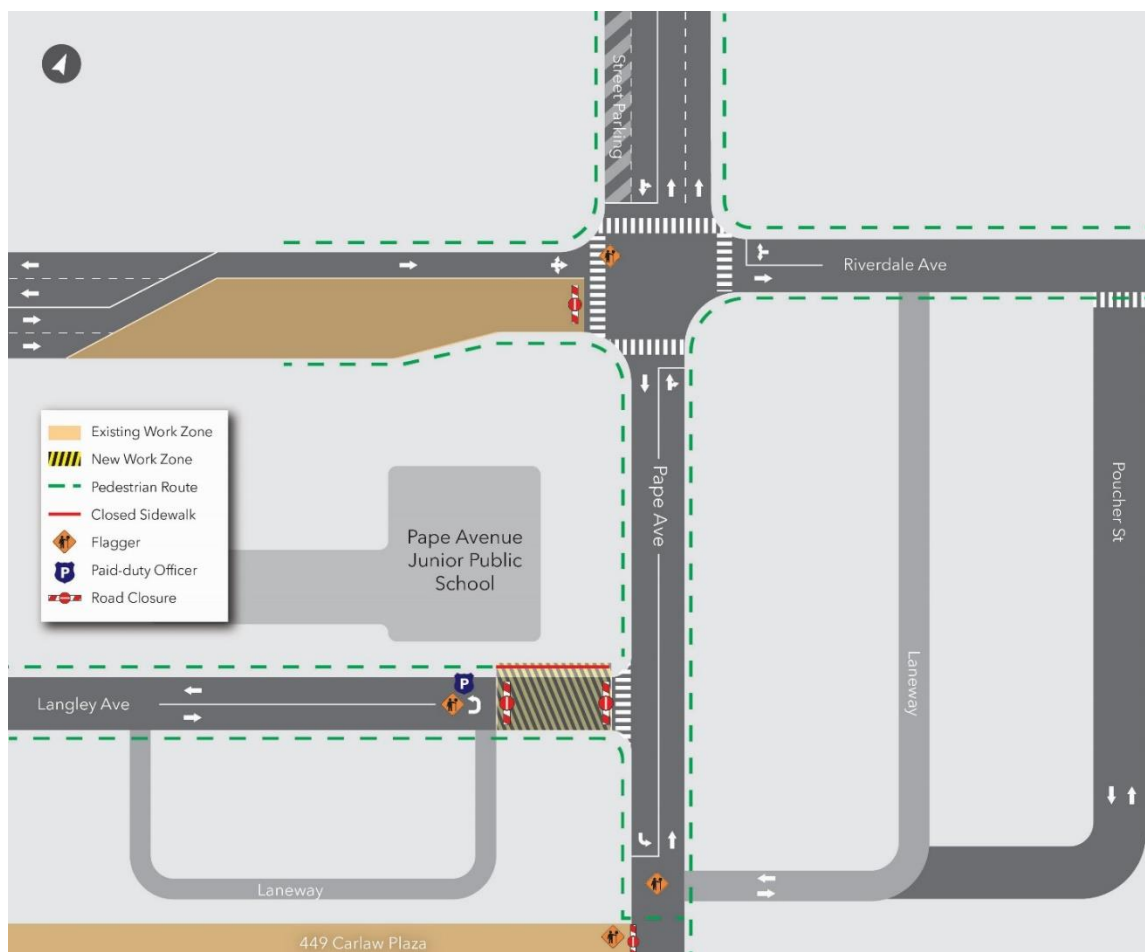


# UPDATE: Langley Avenue Closure for Microtunnel Receiving Shaft Preparations

**Expected start date:** Monday, March 24

**Expected closure duration:** Up to five (5) months

**Hours of work:** See "Construction" below for a breakdown by activity. Includes **overnight work** for noise wall modifications.



## What is happening?

- To prepare for the construction of the sewer microtunnel receiving shaft at Pape Avenue and Langley Avenue, **crews will be closing Langley Avenue to all vehicular traffic just west of Pape Avenue on March 24.**
- **Pedestrian access will be maintained. The south sidewalk on Langley Avenue will remain open while the north sidewalk on Langley Avenue will be closed in the vicinity of the work site.**
- Following the closure, three activities will take place within the work zone:
  - From March 24 to early April, crews will construct a new maintenance hole for the combined sewer on Langley Avenue.
  - From March 31 for up to two weeks, crews will reconfigure the noise wall scaffolding **overnight** in the vicinity of the work zone on Langley Avenue. During this work, the noise wall will come down for a 4-5 day period on Langley Avenue. The wall will be reconstructed with a new structure that utilizes the same noise reduction material.
    - While the wall is down on Langley Avenue, no noisy work will take place in that area.
    - Overnight hours are required to ensure safety of students and daycare users.
  - In mid-April, crews will begin digging the receiving shaft for the micro-tunnel machine on Langley Avenue.

# What to expect:

## Construction

- **Maintenance Hole Construction:**
  - Work will begin as soon as March 24.
  - Crews will excavate, construct a new maintenance hole, then backfill around the maintenance hole and perform temporary road restoration.
  - Equipment will include excavators, dump trucks, and hydrovac trucks.
  - Work will take place during from 7 a.m. to 7 p.m. on weekdays, and 9 a.m. to 7 p.m. on weekends.
- **Noise Wall Adjustments:**
  - Work will begin as early as March 31, 2025
  - The scaffolding and support system of the noise wall will be adjusted using light machinery and hand tools.
  - Work will take place from 9 a.m. to 7 p.m. on weekends. After weekday school and daycare hours, work will take place **overnight** from 6 p.m. to 7 a.m. These hours were chosen to avoid any safety risk to students during modification work. After work concludes each evening, the contractor will perform an inspection of the scaffolding and support system to ensure it is secure and safe.
- **Receiving Shaft Construction**
  - Work will begin in mid-April.
  - Crews will install excavation supports, then excavate to a depth of approximately eight metres.
  - Equipment will include a piling rig, excavators, dump trucks, a generator, and hydrovac trucks.
  - Work will take place from 7 a.m. to 7 p.m. on weekdays and 9 a.m. to 7 p.m. on weekends.
- Residents in the area will hear noise from construction equipment. Crews will take measures to minimize noise impacts wherever possible.
- Noise and vibration monitoring will be in place throughout this work.
- Work may be delayed due to weather conditions or unforeseen circumstances.

## Pedestrian and Traffic Details

- Langley Avenue will be closed between the east entrance to the laneway and Pape Avenue.
- The north sidewalk on Langley Avenue will be closed in the vicinity of the work site. The south sidewalk on Langley Avenue will remain open.
- Pape Avenue will be opened to vehicular traffic south of Langley. Traffic circulation will be maintained by routing southbound vehicles east onto Poucher Street.
- Eastbound traffic on Langley Avenue will perform a three-point turn with the assistance of a flagperson and/or paid-duty officer to travel west towards Carlaw Avenue. Closure signage will be posted to minimize eastbound traffic on Langley Avenue.
- Construction vehicles will arrive southbound on Pape Avenue and will exit through the 449 Carlaw Plaza construction site with the assistance of a traffic control person.
- All other impacts from the previously implemented work zone on Riverdale Avenue related to microtunnel launch shaft works will remain in place.
- The Pape Avenue Junior Public School pick-up drop-off (PUDO) will be maintained on Pape Avenue with traffic circulating southbound out of the neighbourhood via Poucher Street.
  - Metrolinx will work directly with Pape Avenue Junior Public School to communicate the traffic circulation change.

### Contact us:

Call us 24/7 at: [416-202-5100](tel:416-202-5100)  
Write to us at: [ontarioline@metrolinx.com](mailto:ontarioline@metrolinx.com)  
Find us on Twitter, Facebook, and Instagram: [@ontarioline](https://www.instagram.com/ontarioline)  
Visit the website: [www.metrolinx.com/ontarioline](http://www.metrolinx.com/ontarioline)

### Visit our community offices:

**Riverside:**  
770 Queen St. E, Toronto, ON, M4M 1H4

#### General hours:

- Mondays, Tuesdays and Fridays: 9 a.m. to 5 p.m.
- Wednesdays and Thursdays: 10 a.m. to 6 p.m.

### Thorncliffe Park:

East York Town Centre  
45 Overlea Blvd., Toronto, ON M4H 1C3  
Unit 153 (across from the Rogers store)

#### General hours:

- Monday to Friday: 9 a.m. to 5 p.m.

## Safety

- Equipment may be left on site but will be properly secured and stored to ensure safety.
- All excavations will be fully enclosed by fencing and inaccessible to the public.
- During school pick-up and drop-off times, construction traffic will be restricted.
- Noise and air quality monitoring will operate 24/7 during these works to check for exceedances. Mitigations will be applied if exceedances are detected.
- After-hours security will be on site between 7:00 p.m. and 7:00 a.m. to ensure equipment and materials are not tampered with.

### Contact us:

Call us 24/7 at: [416-202-5100](tel:416-202-5100)  
Write to us at: [ontarioline@metrolinx.com](mailto:ontarioline@metrolinx.com)  
Find us on Twitter, Facebook, and  
Instagram: [@ontarioline](#)  
Visit the website:  
[www.metrolinx.com/ontarioline](http://www.metrolinx.com/ontarioline)

### Visit our community offices:

**Riverside:**  
770 Queen St. E, Toronto, ON, M4M 1H4

General hours:

- Mondays, Tuesdays and Fridays: 9 a.m. to 5 p.m.
- Wednesdays and Thursdays: 10 a.m. to 6 p.m.

### Thorncliffe Park:

East York Town Centre  
45 Overlea Blvd., Toronto, ON M4H 1C3  
Unit 153 (across from the Rogers store)

General hours:

- Monday to Friday: 9 a.m. to 5 p.m.