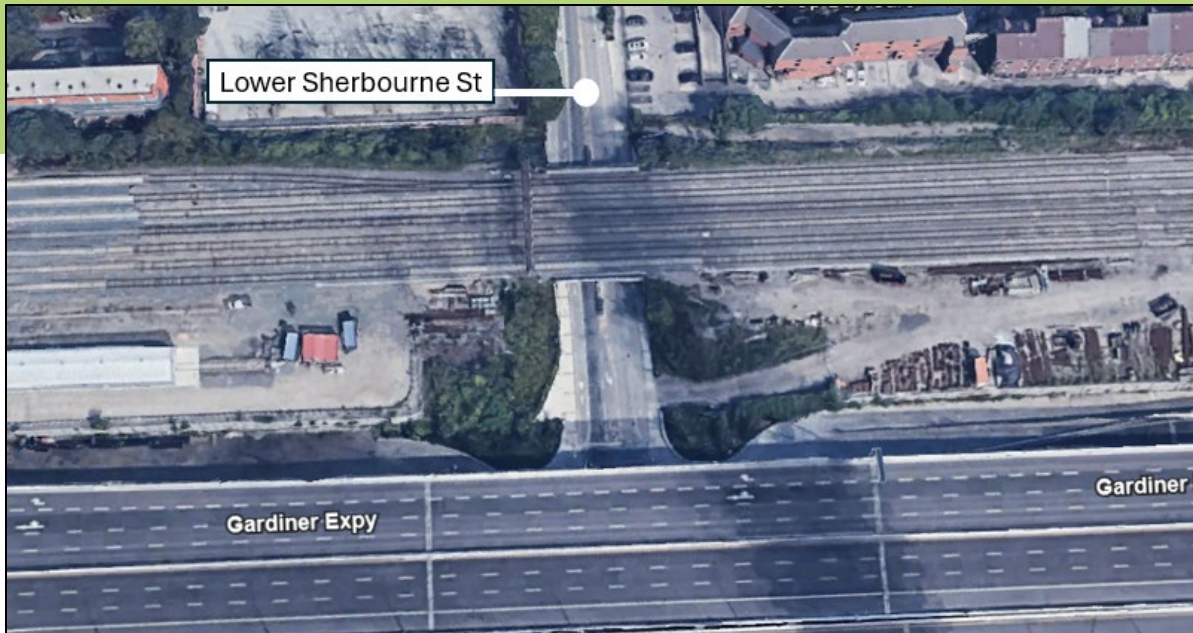


REVISED: Upcoming Construction Activities and Impacts - Lower Sherbourne Street

Ongoing until Summer 2025



What is happening?

Construction activities at Union Station and within the Union Station Rail Corridor (USRC) are being completed in phases to deliver the required infrastructure needed to bring two-way, all-day rail service every 15 minutes or better along core segments of the GO network as part of the greater GO expansion mandate.

As part of the Union Station Enhancement Project, we're completing track infrastructure upgrades within the USRC to increase capacity, bringing you more frequent service as part of GO Expansion enabling works.

GO Expansion will offer more service with faster trains, more stations and seamless connections to a regional rapid transit network.

We have been removing and relocating infrastructure on the south side of the Union Station Rail Corridor east of Union Station and reinforcing the corridor to support the widening of the rail bridges that pass over Lower Jarvis and Lower Sherbourne Streets. This will allow for two additional sections of track to be installed, and will provide an increased transit capacity, offer a more efficient and reliable service with faster trains, and allow for future electrification as part of the larger GO Expansion Program.

Below is a list of ongoing and upcoming sequential construction activities at Lower Sherbourne Street for your early awareness:

Secant Wall Installations:

Secant pile walls consist of a series of overlapping drilled concrete piles, that are reinforced with rebar. These secant pile walls are installed as a retaining wall for the rail corridor to enable foundation work for the future bridge expansion.

Tieback Installations:

Tiebacks are horizontal rods that are drilled into the secant walls to reinforce them for stability, as crews begin to excavate the area in front of the secant wall to prepare for foundation work. Tiebacks are installed with a drill rig, and there may be noise impacts from this work to the adjacent community.

Wingwall Demolitions:

Wing walls at the east and west portion of the rail bridges south of the corridor will be demolished to make room for caisson foundations.

Caisson Drilling and Foundation Installations:

Caisson foundations are constructed by drilling a series of concrete piles that are reinforced with rebar. These foundations will be supporting the future bridge extensions.

Bridge Fascia Demolition:

The south fascia of the existing rail bridges will be demolished in preparation for the bridge expansion work. This work will span the entire length of the bridge resulting in a full street closure.

What does this mean for you?

Continuing into 2025, there will be increased construction activity at street level on Lower Jarvis Street and Lower Sherbourne Street south of the rail corridor as work crews begin bridge demolition activities to enable foundation work in preparation of rail bridge expansions. To facilitate this needed work, there will be closures to traffic lanes, sidewalks, and bike lanes to accommodate these complex activities. Please refer to the table below for all upcoming activities and their associated impacts at Lower Sherbourne Street. As work progresses, this table will be updated with scheduling updates and an updated notice will be circulated.

Activity	Dates	Impacts
Secant Wall Installations	<i>Complete</i>	<ul style="list-style-type: none">Overnight work, noise, dust, vibration impactsLane closures to facilitate concrete pours

Contact Us:

✉ Write to us at: torontoeast@metrolinx.com;

☎ By telephone (416) 202-3900

🐦 Find us on Twitter @GOExpansion

🌐 Visit the website: www.metrolinx.com/projects-and-programs/go-expansion

✉ Disponible en français sur demande. Si vous êtes intéressé, veuillez envoyer un courriel à: torontoeast@metrolinx.com

Wingwall Demolitions	Sherbourne West	<i>Complete</i>	<ul style="list-style-type: none"> • West sidewalk closure • Southbound lane closure, southbound traffic maintained and rerouted into existing northbound lane • Northbound traffic restricted • Cycle track closures • Noise (overnight work), dust, vibration, visual impacts
	Sherbourne East	<i>Complete</i>	<ul style="list-style-type: none"> • East sidewalk closure • Northbound traffic closure • Northbound cycle track closure • Noise (overnight work), dust, vibration, visual impacts
Bridge Fasia Demolition		<i>Complete</i>	<ul style="list-style-type: none"> • Weekend full road closure including traffic lanes, cycle tracks, and sidewalks • Noise (overnight work), dust, vibration, visual impacts
Caisson Drilling and Foundation Installations	Sherbourne West	April 15 – April 30, 2025	<ul style="list-style-type: none"> • West sidewalk closure • Southbound lane closure, southbound traffic maintained and rerouted into existing northbound lane • Northbound traffic closure • Cycle track closures • Noise (overnight work), dust, vibration, visual impacts
	Sherbourne East	May 1 – May 15, 2025	<ul style="list-style-type: none"> • East sidewalk closure • Northbound traffic closure • Northbound cycle track closure • Noise (overnight work), dust, vibration, visual impacts
Abutment Installations	Sherbourne East	July 1 – August 15, 2025	<ul style="list-style-type: none"> • East sidewalk closure • Northbound traffic closure • Northbound cycle track closure • Noise (overnight work), dust, vibration, visual impacts

Contact Us:

✉ Write to us at: torontoeast@metrolinx.com;

☎ By telephone (416) 202-3900

🐦 Find us on Twitter [@GOExpansion](https://twitter.com/GOExpansion)

🌐 Visit the website: www.metrolinx.com/projects-and-programs/go-expansion

✉ Disponible en français sur demande. Si vous êtes intéressé, veuillez envoyer un courriel à: torontoeast@metrolinx.com

	Sherbourne West	May 15 – June 30, 2025	<ul style="list-style-type: none"> • West sidewalk closure • Southbound lane closure, southbound traffic maintained and rerouted into existing northbound lane • Northbound traffic closure • Cycle track closures • Noise (overnight work), dust, vibration, visual impacts
--	-----------------	------------------------	---

This schedule will be updated as work progresses. and is subject to change due to the complexities of this work and pending permit approvals.

Long-Term Benefits

The East Track Enhancements are being completed as part of the Union Station Enhancement Project and larger GO Expansion Program.

We're removing and relocating infrastructure on the south side of the Union Station Rail Corridor east of Union Station and widening the rail bridges that pass over Lower Jarvis and Lower Sherbourne Streets. The East Track Enhancements will pave the way for two additional sections of track to be installed along the southside of the Union Station Rail Corridor, to the east of Union Station which will increase capacity and allow for future electrification as part of the larger GO Expansion Program.

After the completion of the East Track Enhancements, Metrolinx will lay tracks, modernize the signaling system and electrify core segments of the GO rail network.

Questions

If you have any questions or concerns about this work, please contact us any time at TorontoEast@metrolinx.com or (416) 202-3900. For more information on GO Expansion in your community, visit our website at [Metrolinx.com/GoExpansion](https://www.metrolinx.com/GoExpansion).

Please scan the QR Code above to subscribe to our weekly e-Newsletter for updates.



SCAN ME

We appreciate your ongoing patience and understanding of this necessary work. Dates subject to change.

Contact Us:

✉ Write to us at: torontoeast@metrolinx.com;

☎ By telephone (416) 202-3900

🐦 Find us on Twitter [@GOExpansion](https://twitter.com/GOExpansion)

🌐 Visit the website: www.metrolinx.com/projects-and-programs/go-expansion

✉ Disponible en français sur demande. Si vous êtes intéressé, veuillez envoyer un courriel à: torontoeast@metrolinx.com