

Queen Station Open House

When: Thursday, April 17, 2025

Time: 5:30 p.m. – 7:00 p.m.

Location: Four Seasons Centre for the Performing Arts (Education Centre), 145 Queen St W., Toronto

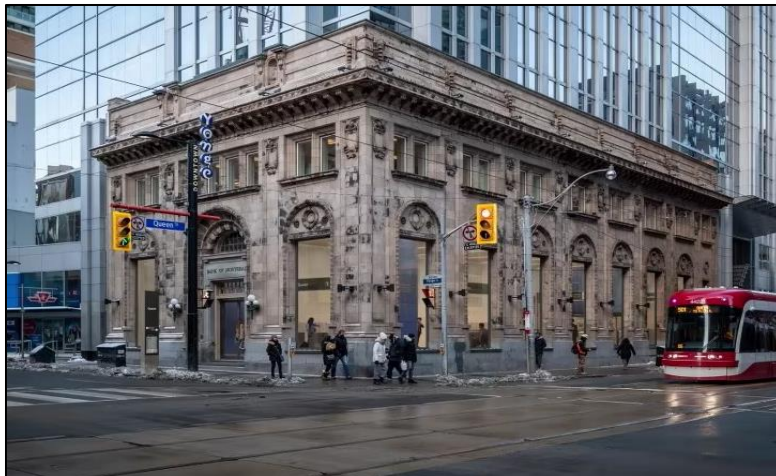
What is happening?

Join us in-person to learn more about the new subway under construction in your community, on April 17, 2025, from 5:30 p.m. to 7:00 p.m. at the Four Seasons Centre for the Performing Arts (Education Centre), 145 Queen Street West, Toronto.

Please register to join us!

The open house event is free to attend, and you are encouraged to register online in advance to stay up to date on the Ontario Line subway project.

To register, please visit the Metrolinx Ontario Line events page link or scan the QR code: metrolinx.com/en/projects-and-programs/ontario-line/events



Future Ontario Line Queen Station



Ongoing piling and excavation preparation activities

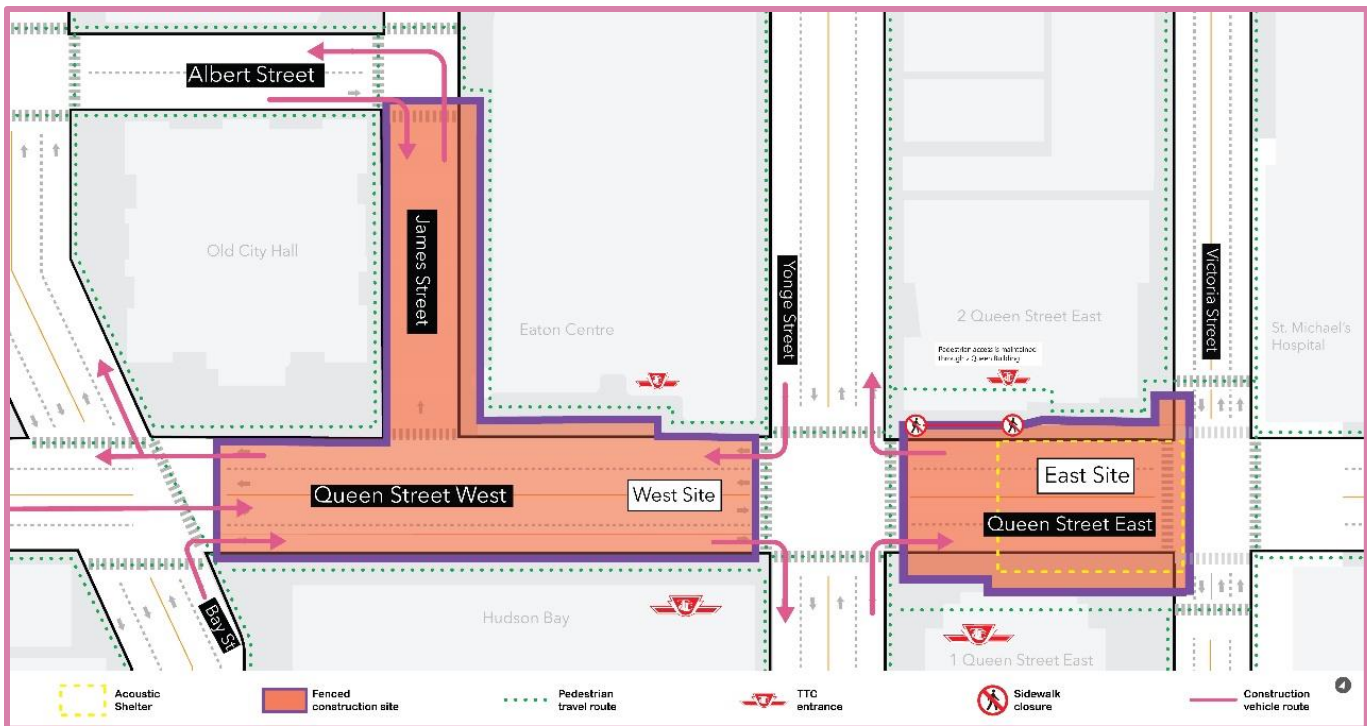
Expected start date: As early as March 24, 2025

Hours and expected duration of work:

- **East site:** Weekdays, from **7:00 a.m. to 7:00 p.m.**, with occasional weekend and overnight shifts from 7:00 pm to 7:00 a.m., ongoing until the end of May 2025.
- ***NEW* West site:** Weekdays: **7:00 a.m. to 7:00 p.m.**, with **overnight work starting as soon as March 24**, and weekend shifts, ongoing until summer 2025.

What is happening?

The installation of structural support piles is ongoing at the Queen Station site. As work progresses to build the future Ontario Line interchange station at Queen, crews will prepare the sites for the next phase of work, which is excavation.



What to expect

- Piling work at Queen Station is expected to continue at the east site through March 2025, and on the west site through April 2025.
- Crews will be preparing for and initiating excavation activities.
- Work hours will vary based on site preparation and excavation activities.
- Additional workdays or hours may be required to allow teams to complete work, such as overnight or Saturday shifts.
- Noise from equipment drilling piles, removing spoils and concrete work is expected.
- Residents will see drilling machines, cranes, excavators, concrete pumps, and concrete trucks on-site during this phase of work.
- To reduce impacts to residents and businesses in the area, mitigations are in place including air quality, noise and vibration monitoring, as well as site hoarding and mud mats for dust suppression.

Construction vehicle routes

Pedestrian Access and Truck Routing at the West Site (along Queen Street West from Yonge Street to Bay Street, and in James Street from Queen Street to Albert Street)

- Trucks will enter and exit from Bay Street, James Street, and Yonge Street.
- The entrances at Bay Street and Yonge Street will have flaggers and paid duty officers to ensure pedestrian safety and direct truck traffic.
- Flaggers will be present at the James Street entrance at all times.

Pedestrian Access and Truck Routing at the East Site (Queen Street West from Yonge Street to Victoria Street)

- Trucks will enter and exit from Yonge Street and through the southbound lane on Victoria Street.
- The entrances at Victoria Street and Yonge Street will have flaggers and paid duty officers to ensure pedestrian safety and direct truck traffic.
- **A section of the north Queen Street East sidewalk will be temporarily closed (as shown in the map), and the pedestrian access will be maintained through the 2 Queen Building.**

Excavation preparation activities at the west site (Bay Street to Yonge Street)

Ongoing until mid-2025

- Crews are continuing piling works on the west site, including installing capping beams to complete the piling cycle. This work also includes installing horizontal rebar, creating a trench above the piles that can be filled with concrete. Capping beams help stabilize and provide support for the gantry crane. Additional excavation preparation activities are expected in 2025.
- Crews will prepare the site for future excavation works. Prep works include delivering and installing an overhead crane, and equipment for excavation works on-site.

- Occasionally, crews will also be required to perform utilities and infrastructure works to prepare for future excavation of the site; this may include relocating cables and utilities. This work requires the use of hydro-vac trucks.

Excavation preparation activities at the east site (Yonge Street to Victoria Street)

Ongoing until the end of May 2025

- Crews will prepare the site for future excavation works. Prep works include completing the installation of capping beams and delivering and installing an overhead crane, an acoustic shelter, and equipment for excavation works on-site.
- Once complete, the acoustic shelter will cover the east site. The shelter structure is expected to reduce noise and minimize dirt and dust from the work site while allowing crews to work extended hours, year-round, without being affected by the weather.
- Crews will also deliver and install a gantry crane to the site. The crane will be assembled using a smaller mobile crane.
- Upon completion, the crane will be used for excavation activities. and will be housed within the acoustic shelter. This type of crane can move back and forth on girders (i.e. metal supports) within the construction site, allowing it to load materials and deliver them to precise locations within the station site at that location.
- Due to its size, delivery and installation of the acoustic shelter and crane may occur outside of typical work hours and may require temporary lane closures. More information will be shared as it becomes available.
- Traffic control persons will be deployed to guide any oversized deliveries safely.
- Occasionally, crews will also perform utilities and infrastructure works to prepare for future excavation of the site; this may include relocating cables and utilities. This work requires the use of hydro-vac trucks.

Note:

- Area residents and businesses can expect to hear noise from work equipment, specifically hydrovac trucks and drills as required to access underground utilities and ground conditions. These machines are required for this work to ensure the safety of infrastructure and workers. Crews will take measures to minimize noise impacts wherever possible.
- Work may be delayed, rescheduled, or extended due to weather conditions or unforeseen circumstances.
- Visit metrolinx.com/OntarioLineConstruction for more information on work happening in your community.

About the Ontario Line

- 15.6-kilometre subway line that will make it faster and easier to travel within Toronto and beyond.
- 15 stops and over 40 connections to other transit, including GO train, subway, LRT, streetcar, and bus lines.
- Less than 30 minutes from one end of the line to the other.
- 28,000 fewer car trips each day.

Contact us:

Call us 24/7 at: [416-202-5100](tel:416-202-5100)

Write to us at: ontarioline@metrolinx.com

Find us on X, Facebook, and Instagram:

[@ontarioline](#)

Visit the website:

www.metrolinx.com/ontarioline

Visit our community offices:

770 Queen Street East (near Queen & Broadview)

General hours:

Mondays, Tuesdays, and Fridays: 9:00 a.m. to 5:00 p.m.

Wednesdays: 1:00 p.m. to 6:00 p.m.

Thursdays: 10:00 a.m. to 6:00 p.m.

Thorncliffe Park:

East York Town Centre

45 Overlea Blvd., Toronto, ON M4H 1C3

Unit 153 (across from the Rogers store)

General hours:

Monday - Friday, 9 a.m. - 5 p.m.