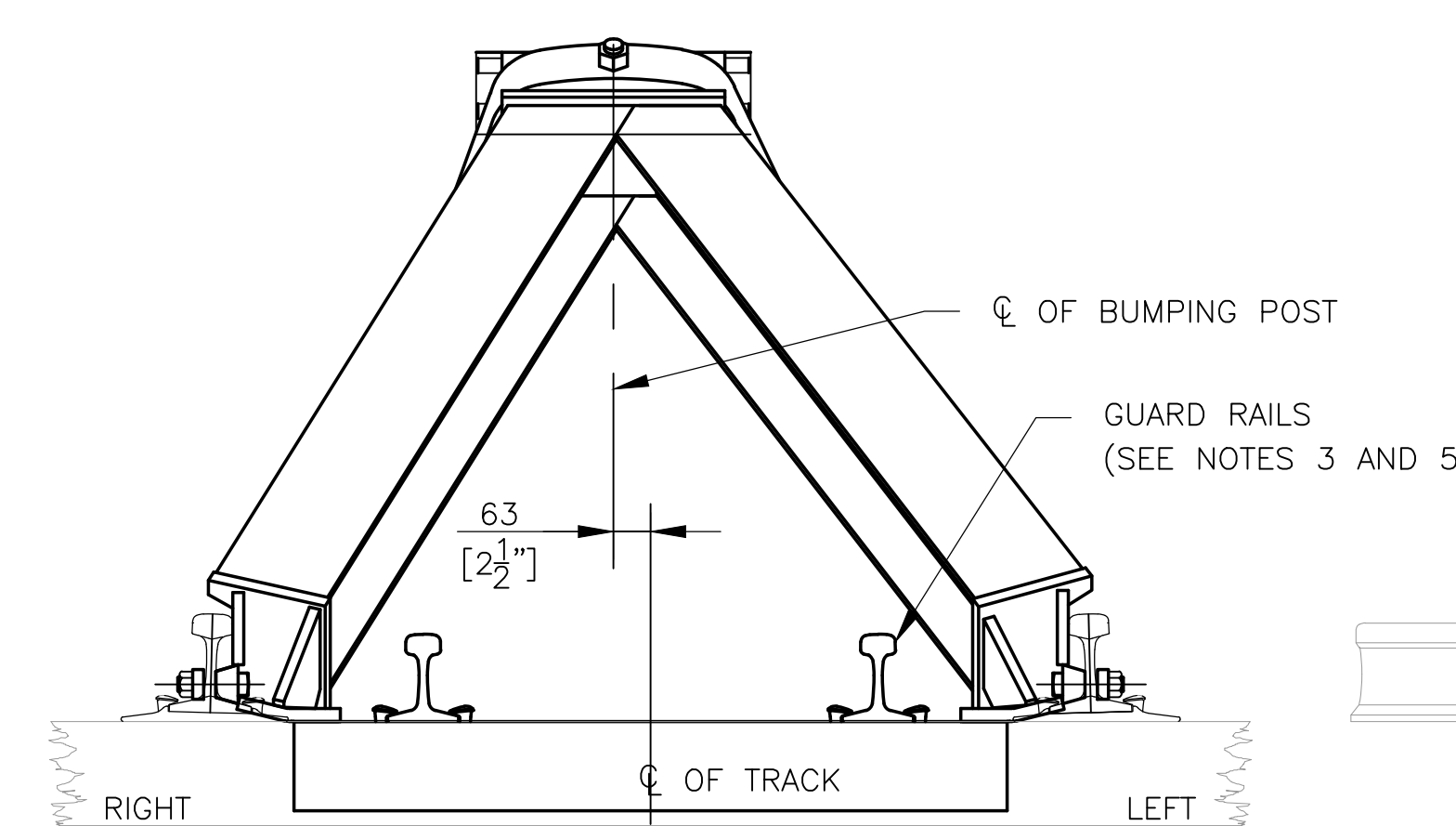
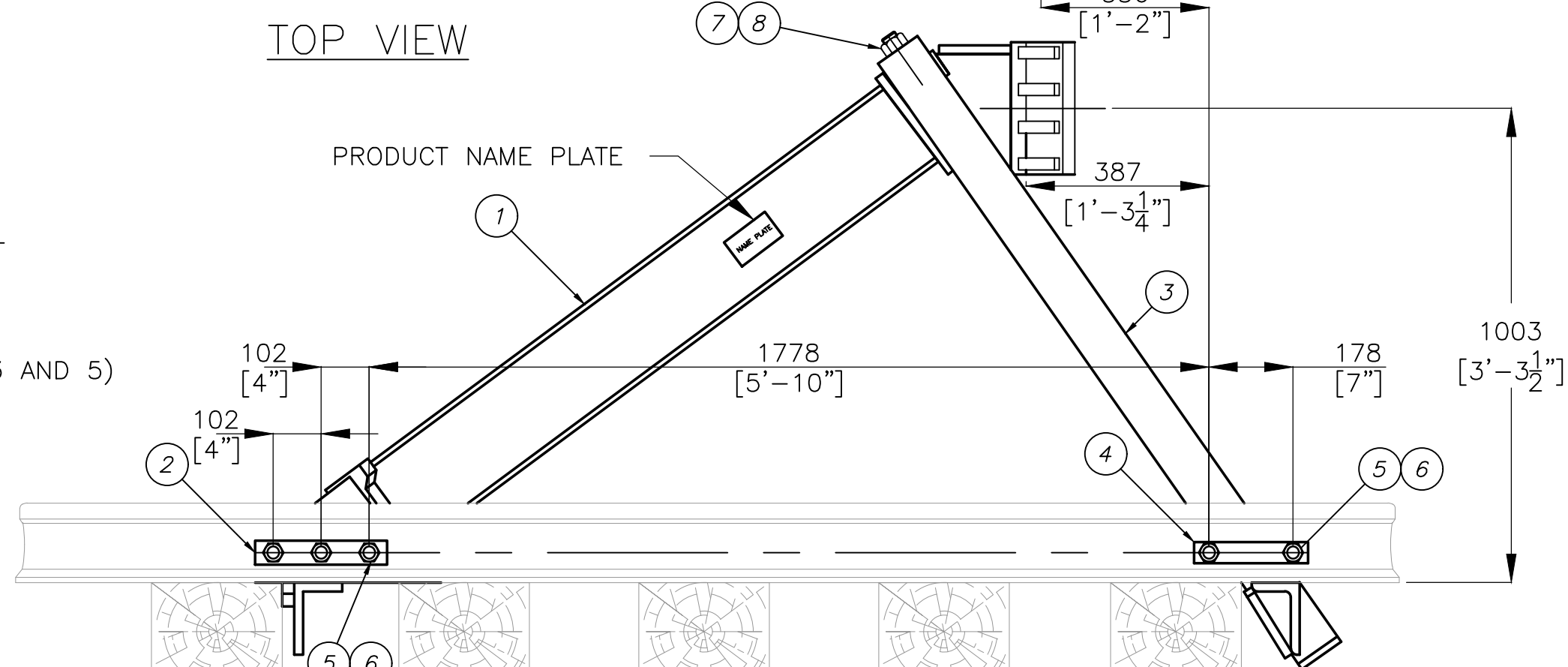


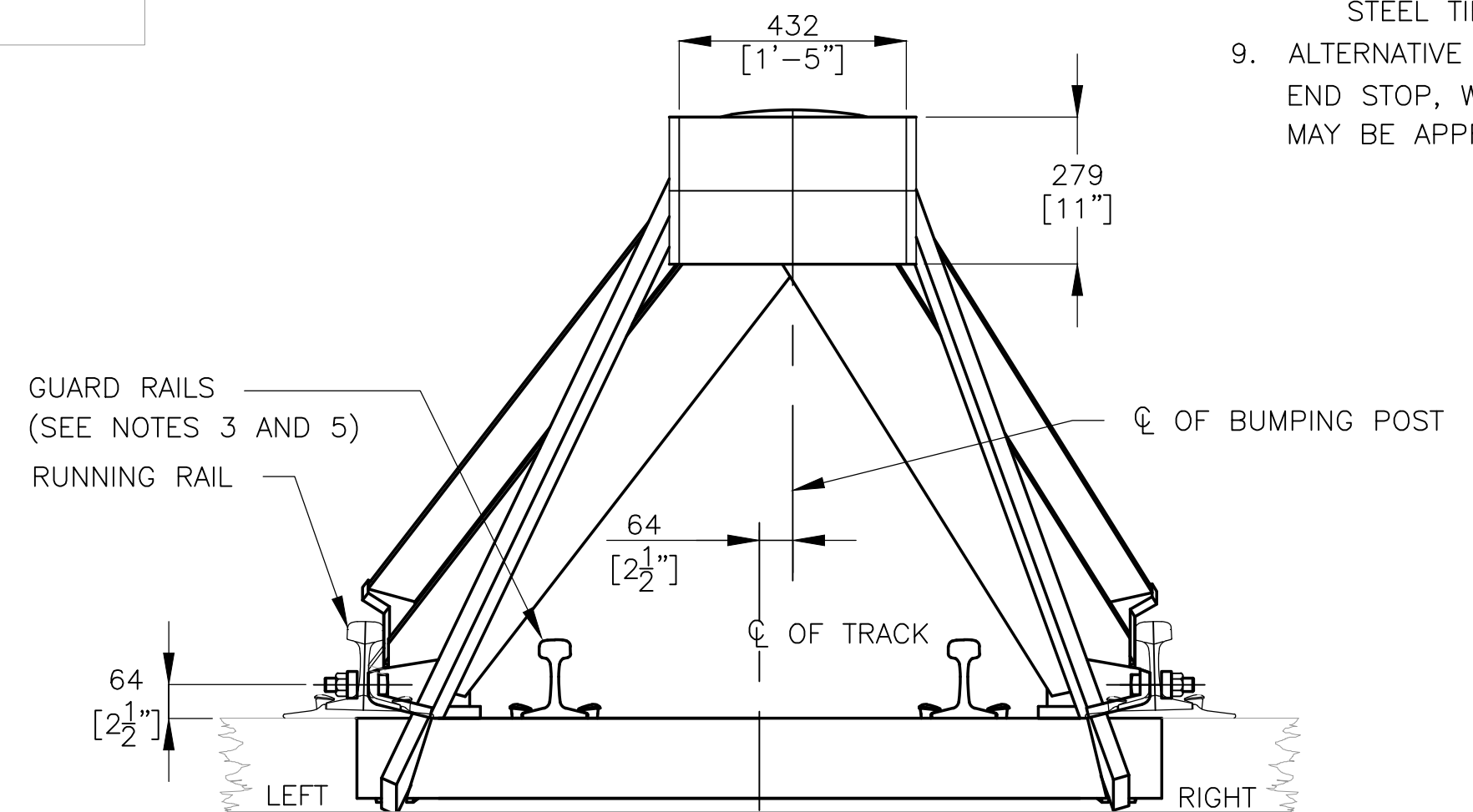
TOP VIEW



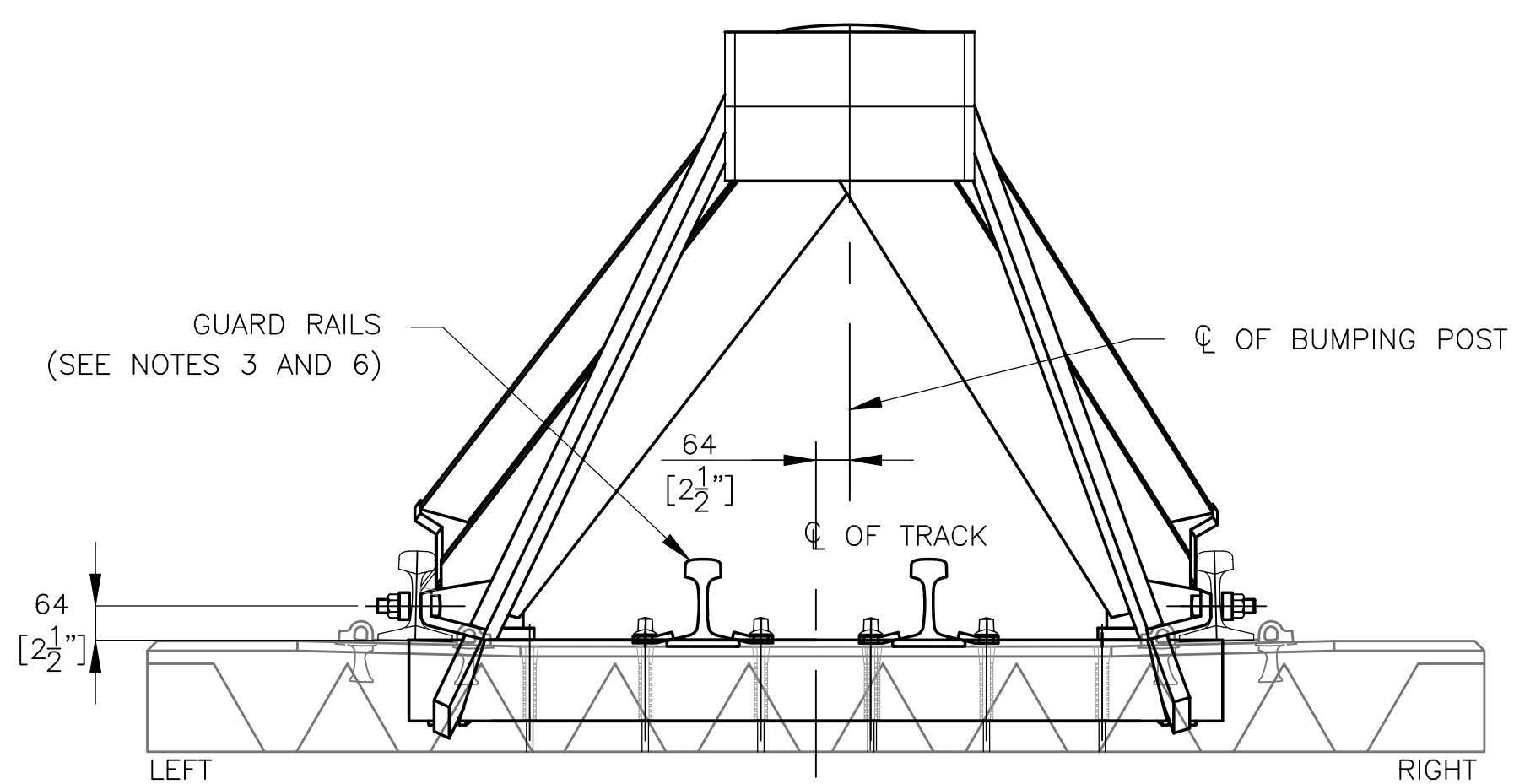
SECTION A - REAR ELEVATION VIEW (WOOD TIE)



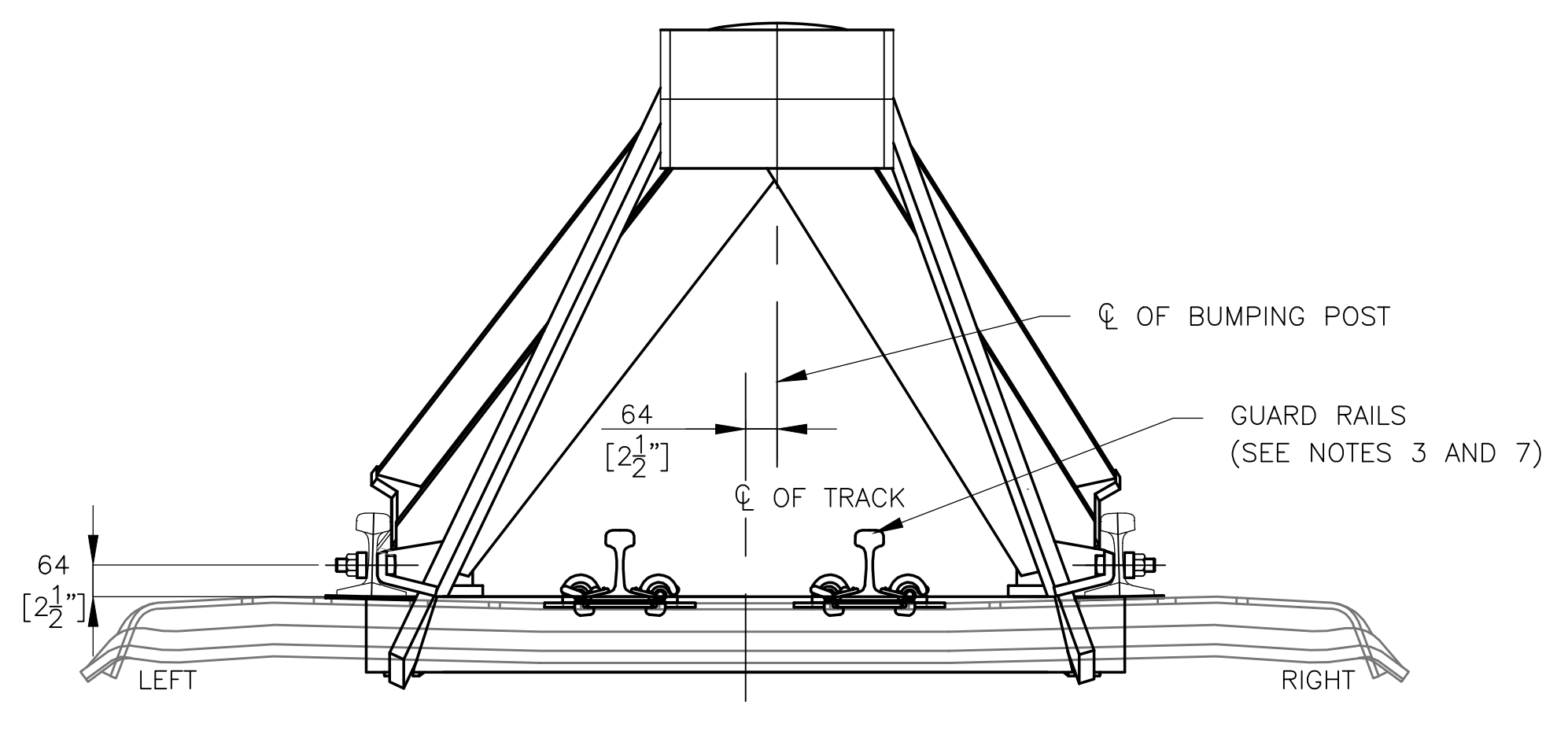
LEFT HAND SIDE ELEVATION VIEW (WOOD TIE)



SECTION B - FRONT ELEVATION VIEW (WOOD TIE)



FRONT ELEVATION VIEW (CONCRETE TIE)



FRONT ELEVATION VIEW (STEEL TIE)

BILL OF MATERIAL				
ITEM	QTY	PART NUMBER	DESCRIPTION	LENGTH
1	1	12701-01-00	WGC COMPRESSION UNIT	53 1/4"
2	2	10700-02-32	THREE HOLE FILLER BAR	6"
3	1	12100-20-00	TENSION UNIT	4"
4	1	11100-12-00	TWO HOLE FILLER BAR	4"
5	1	1001-2123-064	1" X 4" H.T. SQ. HD. BOLT	57 5/8"
6	1	3002-2110	1" HEX NUT	4"
7	1	1002-2610-080	1 1/4" X 5" HH BOLT	17 7/8"
8	2	3002-2610	1 1/4" HEX NUT	6"
9	2	RED OXIDE	PAINT*	3"

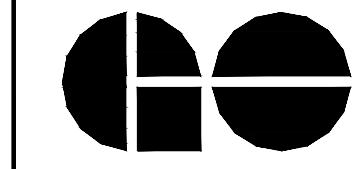
* UNLESS OTHERWISE SPECIFIED

GENERAL NOTES:

- ALL EXPOSED SURFACES OF THE BUMPING POST SHALL BE PAINTED AS PER MANUFACTURER'S RECOMMENDATION.
- SYSTEM ASSEMBLY AND INSTALLATION SHALL BE IN ACCORDANCE TO MANUFACTURER'S RECOMMENDATIONS.
- GUARD RAILS ARE TO BE A MINIMUM 5.5m [18'] IN LENGTH. RAILS ARE TO EXTEND 1m [3'] BEYOND THE REAR OF THE BUMPING POST. GUARD RAILS ARE NOT REQUIRED TO BE BEVELED.
- RAIL TO BE FULLY SPIKED FOR 6 TIES AHEAD AND THROUGHOUT THE BUMPING POST. GUARD RAILS ARE TO BE FULLY SPIKED FOR THEIR ENTIRE LENGTH.
- FOR DETAILS OF WOOD TIE INSTALLATION WITH GUARD RAILS, REFER TO GTS-1108.
- FOR DETAILS OF CONCRETE TIE INSTALLATION WITH GUARD RAILS, REFER TO GTS-2007 AND GTS-1334 FOR CLIPS.
- FOR DETAILS OF STEEL TIE INSTALLATION WITH GUARD RAILS, REFER TO GTS-2105.
- MINIMUM TIE SPACING:
WOOD TIES - 457mm (18")
CONCRETE TIES - 609mm (24")
STEEL TIES - 508mm (20")
- ALTERNATIVE TYPES OF BUMPING POSTS (I.E. SLIDING FRICTION END STOP, WHEEL STOP, FIXED END STOP BUMPING POSTS) MAY BE APPROVED BY METROLINX ENGINEERING - TRACK.

METRIC CONVERSION: 1 inch=25.4mm, 1 foot=304.8mm

0	23/10/31	INITIAL VERSION ESTABLISHED	
No.	Date	Revision	By Approved
Standard/		BUMPING POST DETAILS	
Drawn	Checked	Approved	VP Engineering & Asset Management - Track
NA	SJ		
Date		Plan Number	Rev
OCTOBER 31/2023		GTS-2214	0
REFERENCE: -		Sheet 1 OF 1	



METROLINX