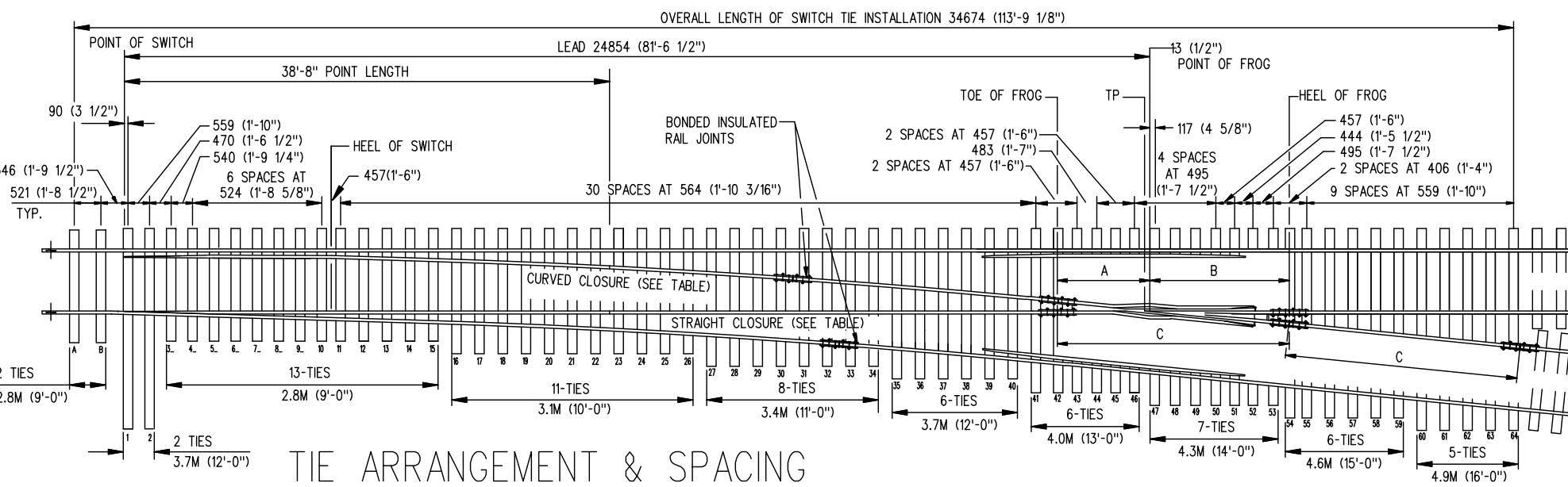
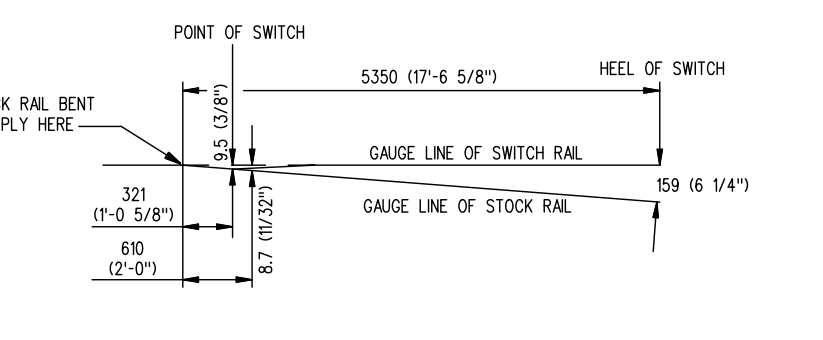


TIE ARRANGEMENT & SPACING  
HAND OPERATED & SPRING SWITCHES

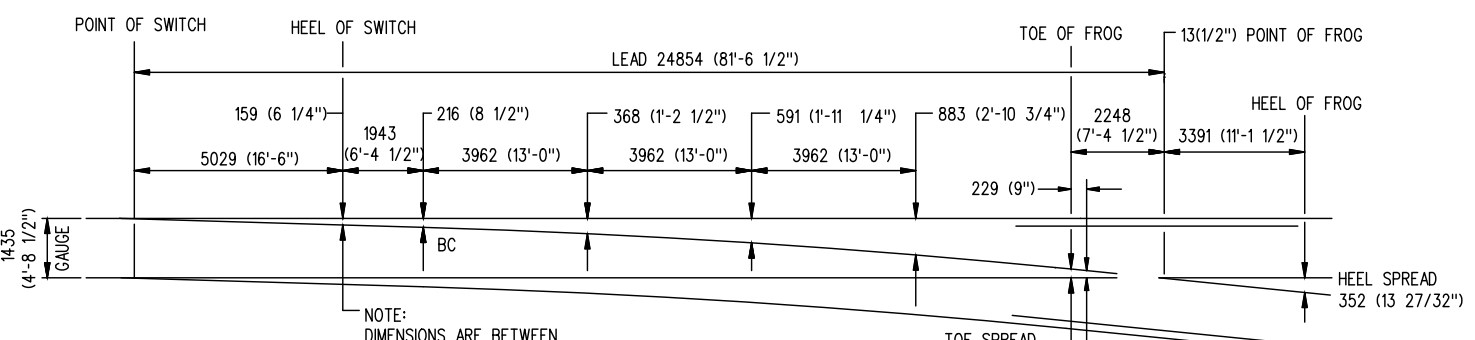


TIE ARRANGEMENT & SPACING  
POWER OPERATED SWITCH  
RBM & SPRING FROG

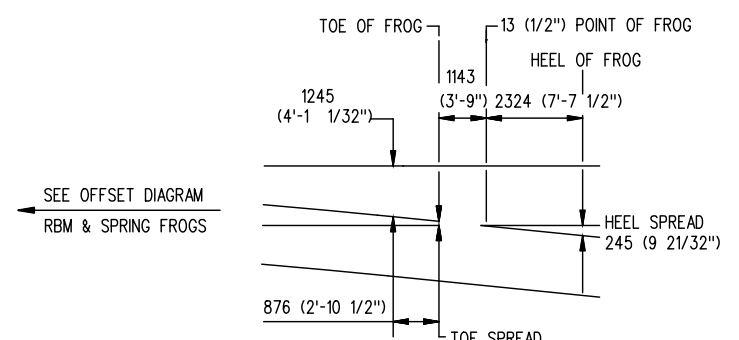
FROGS	A	B	C
RBM	2248 (7'-4 1/2\"/>		
SGM	1143 (3'-9\"/>		
SPRING	2248 (7'-4 1/2\"/>		



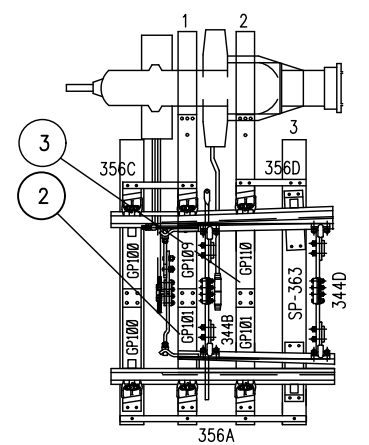
STOCK RAIL BENDING DETAIL



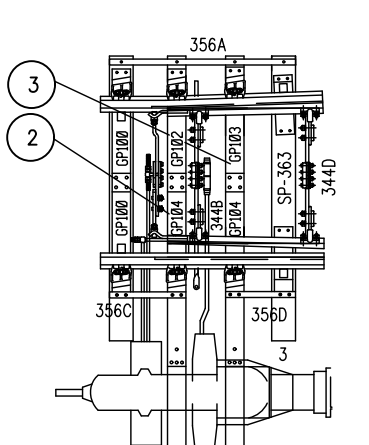
OFFSET DIAGRAM  
RBM & SPRING FROGS



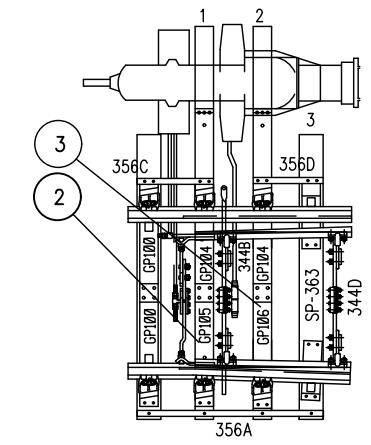
OFFSET DIAGRAM  
SGM FROG



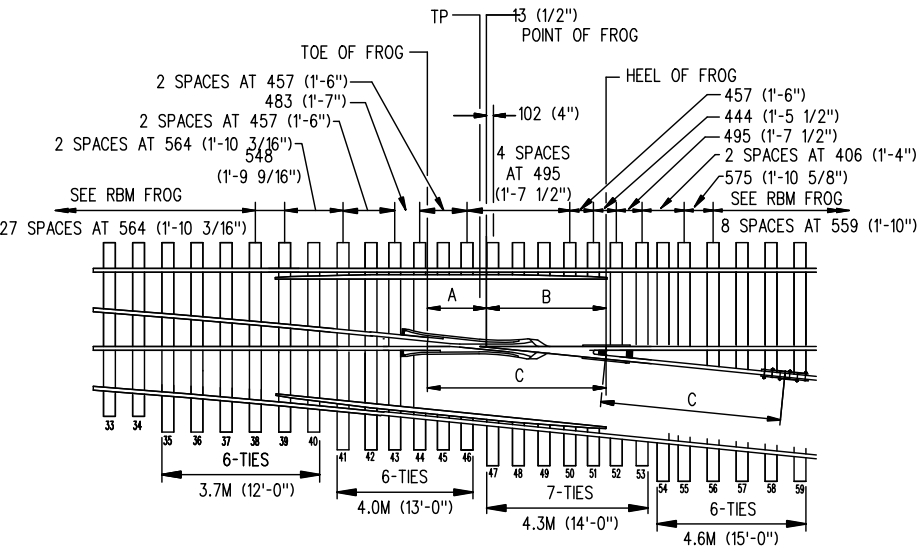
DRAWING NO. GTS-0011 D, H & L  
LEFT HAND TURNOUT  
MACHINE MOUNTED ON LEFT



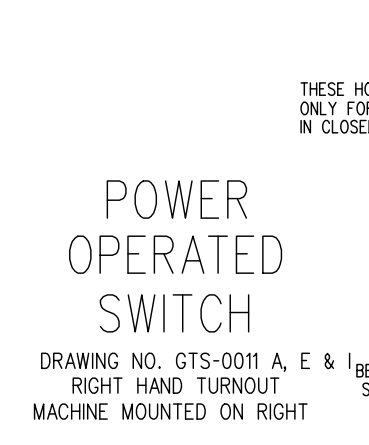
DRAWING NO. GTS-0011 C, G & K  
LEFT HAND TURNOUT  
MACHINE MOUNTED ON RIGHT



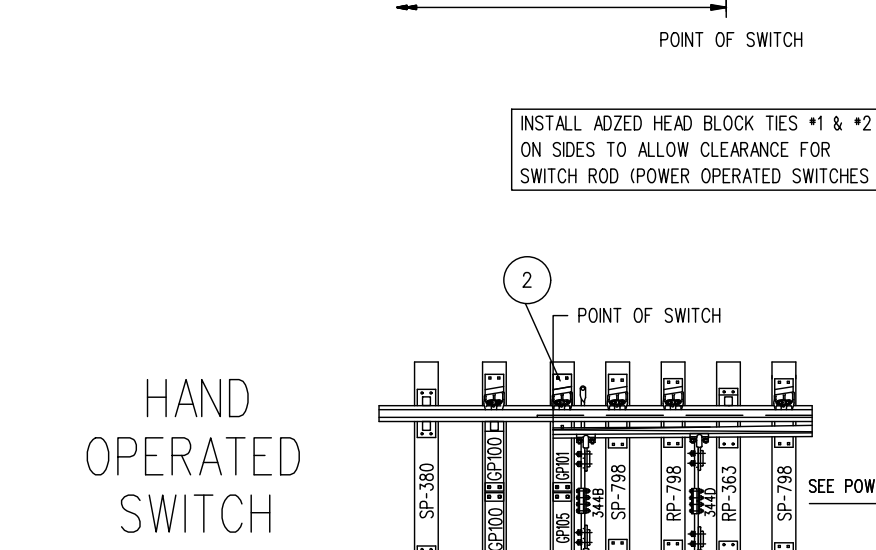
DRAWING NO. GTS-0011 B, F & J  
RIGHT HAND TURNOUT  
MACHINE MOUNTED ON LEFT



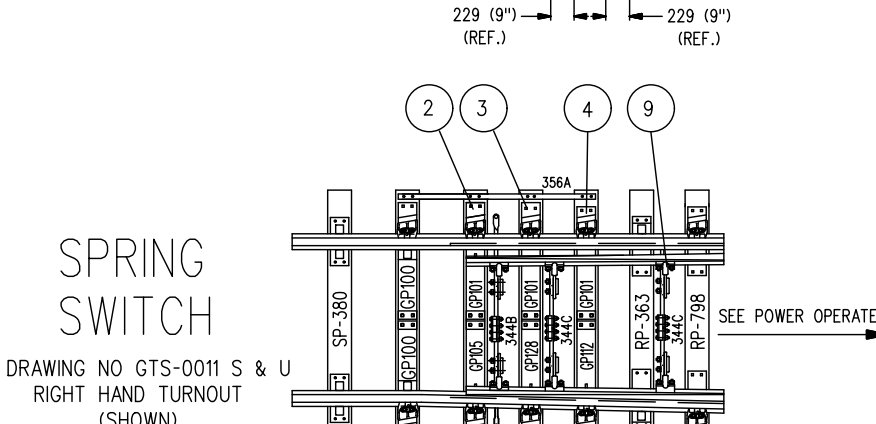
TIE ARRANGEMENT & SPACING  
SGM FROG



DRAWING NO. GTS-0011 A, E & I  
RIGHT HAND TURNOUT  
MACHINE MOUNTED ON RIGHT



TIE ARRANGEMENT & SPACING  
POWER OPERATED SWITCH



DRAWING NO. GTS-0011 M, O & N  
RIGHT HAND TURNOUT (SHOWN)  
DRAWING NO. GTS-0011 P, R & Q  
LEFT HAND TURNOUT

SPRING SWITCH  
DRAWING NO. GTS-0011 S & U  
RIGHT HAND TURNOUT (SHOWN)  
DRAWING NO. GTS-0011 T & V  
LEFT HAND TURNOUT

MECHANICAL SWITCHMAN (SUPPLIED BY SIGNALS & COMMUNICATIONS)

POWER OPERATED SWITCH

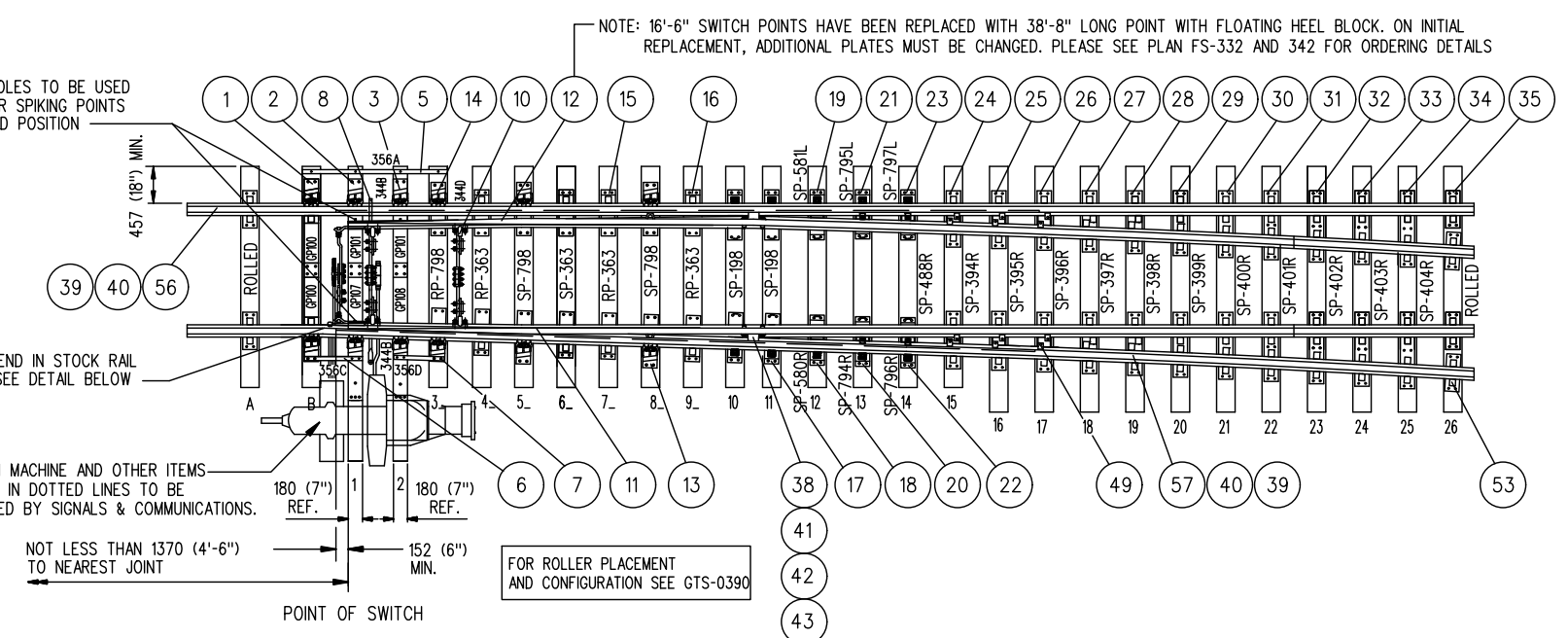
DRAWING NO. GTS-0011 A, E & I  
RIGHT HAND TURNOUT  
MACHINE MOUNTED ON RIGHT

HAND OPERATED SWITCH

DRAWING NO. GTS-0011 M, O & N  
RIGHT HAND TURNOUT (SHOWN)  
DRAWING NO. GTS-0011 P, R & Q  
LEFT HAND TURNOUT

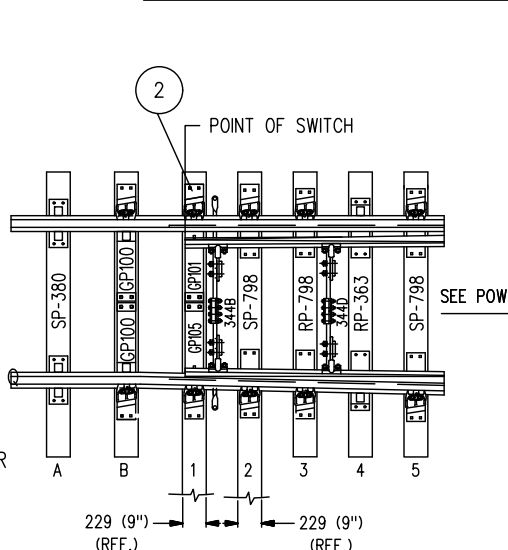
SPRING SWITCH

DRAWING NO. GTS-0011 S & U  
RIGHT HAND TURNOUT (SHOWN)  
DRAWING NO. GTS-0011 T & V  
LEFT HAND TURNOUT



INSTALL ADZED HEAD BLOCK TIES \*1 & \*2 ON SIDES TO ALLOW CLEARANCE FOR SWITCH ROD (POWER OPERATED SWITCHES ONLY).

SWITCH POINT THROWS  
POWER & HAND OPERATED SWITCHES  
1st ROD- 121 (4 3/4\"/>



POWER OPERATED SWITCH

DRAWING NO. GTS-0011 A, E & I  
RIGHT HAND TURNOUT  
MACHINE MOUNTED ON RIGHT

HAND OPERATED SWITCH

DRAWING NO. GTS-0011 M, O & N  
RIGHT HAND TURNOUT (SHOWN)  
DRAWING NO. GTS-0011 P, R & Q  
LEFT HAND TURNOUT

SPRING SWITCH

DRAWING NO. GTS-0011 S & U  
RIGHT HAND TURNOUT (SHOWN)  
DRAWING NO. GTS-0011 T & V  
LEFT HAND TURNOUT

FOR REPLACEMENT OF BOLTS, CLIPS OR STOPS IN FIELD SEE GTS-0366 & 0368.

FOR REPLACEMENT OF FROG BOLTS IN FIELD SEE GTS-1309.

FOR CLIP ASSEMBLY SEE GTS-0352

ALL TIE SCREW HOLES TO BE DRILLED 17 (2 1/32\"/>

FOR REPLACEMENT OF FROG BOLTS IN FIELD SEE GTS-1309.

FOR REPLACEMENT OF FROG BOLTS IN FIELD SEE GTS-1309.

FOR REPLACEMENT OF FROG BOLTS IN FIELD SEE GTS-1309.

FOR REPLACEMENT OF FROG BOLTS IN FIELD SEE GTS-1309.

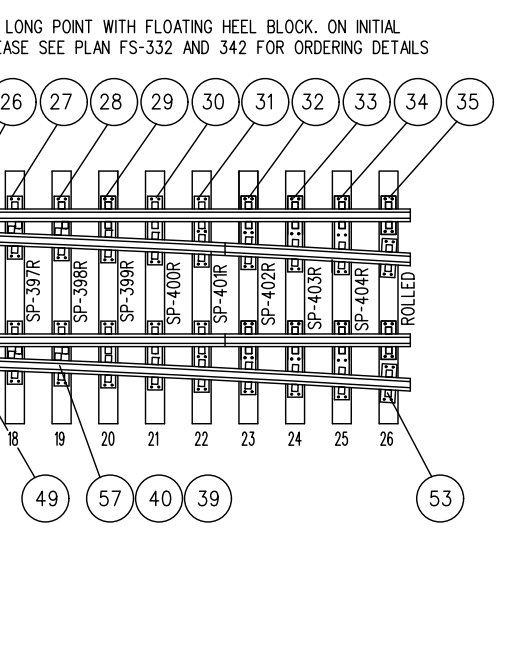
FOR REPLACEMENT OF FROG BOLTS IN FIELD SEE GTS-1309.

FOR REPLACEMENT OF FROG BOLTS IN FIELD SEE GTS-1309.

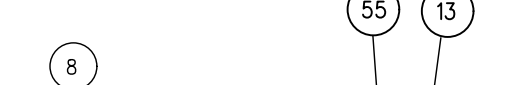
FOR REPLACEMENT OF FROG BOLTS IN FIELD SEE GTS-1309.

FOR REPLACEMENT OF FROG BOLTS IN FIELD SEE GTS-1309.

FOR REPLACEMENT OF FROG BOLTS IN FIELD SEE GTS-1309.



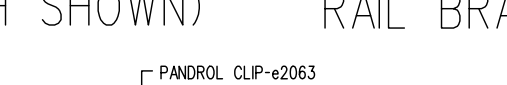
"MJS" CLIP ASSEMBLY (POWER SWITCH SHOWN)



ADJUSTABLE RAIL BRACE ASSEMBLY



HEEL BLOCK ASSEMBLY



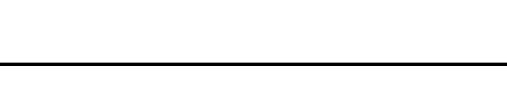
BONDED INSULATED RAIL JOINT



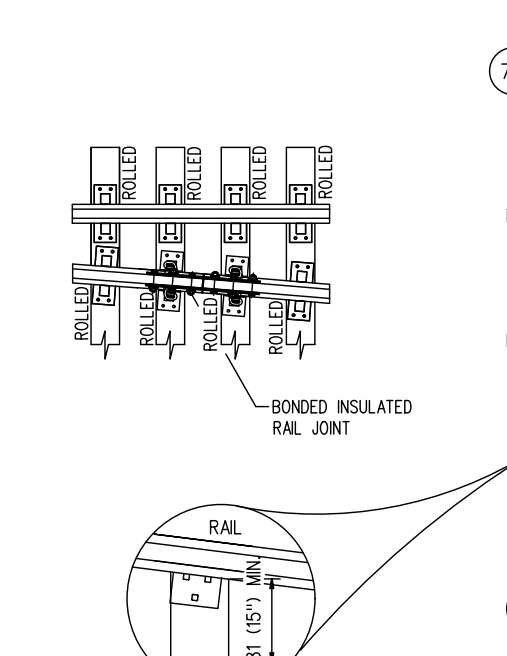
HOLD-DOWN CLIP ASSEMBLY



BOLTLESS GUARD RAIL ASSEMBLY



SPRING FROG



RBM FROG



SGM FROG



SPRING FROG



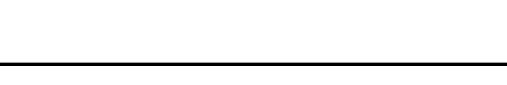
RBM FROG



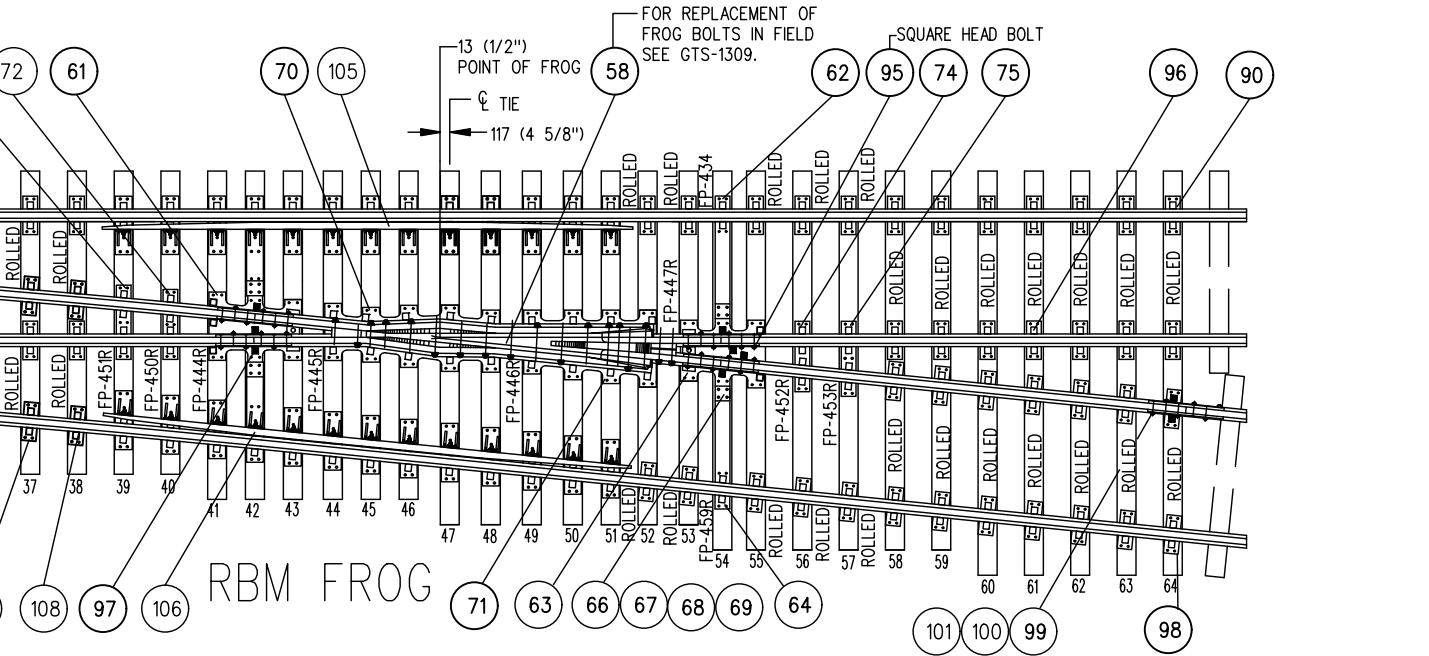
SGM FROG



SPRING FROG



RBM FROG



TURNOUT DATA

FOR REPLACEMENT OF FROG BOLTS IN FIELD SEE GTS-1309.

FOR REPLACEMENT OF FROG BOLTS IN FIELD SEE GTS-1309.

FOR REPLACEMENT OF FROG BOLTS IN FIELD SEE GTS-1309.

FOR REPLACEMENT OF FROG BOLTS IN FIELD SEE GTS-1309.

FOR REPLACEMENT OF FROG BOLTS IN FIELD SEE GTS-1309.

FOR REPLACEMENT OF FROG BOLTS IN FIELD SEE GTS-1309.

FOR REPLACEMENT OF FROG BOLTS IN FIELD SEE GTS-1309.

FOR REPLACEMENT OF FROG BOLTS IN FIELD SEE GTS-1309.

FOR REPLACEMENT OF FROG BOLTS IN FIELD SEE GTS-1309.

FOR REPLACEMENT OF FROG BOLTS IN FIELD SEE GTS-1309.

FOR REPLACEMENT OF FROG BOLTS IN FIELD SEE GTS-1309.

FOR REPLACEMENT OF FROG BOLTS IN FIELD SEE GTS-1309.

TURNOUT DATA

RBM & SPRING FROGS		SGM FROG	
FROG NO.	10	FROG NO.	10
LENGTH OF SWITCH PT.	1789 (38'-8\"/>		
HEEL SPREAD	159 (6 1/4\"/>		
LEAD	24854 (81'-6 1/2\"/>		
P.S. TO H.F.	28245 (92'-8\"/>		
10821 (35'-6\"/>			
10872 (35'-8\"/>			

NOTES:

- INFORMATION CONTAINED IN THIS PLAN IS FOR MAINTENANCE PURPOSE ONLY. ORDERING INFORMATION FOR NEW TURNOUTS CAN BE FOUND ON GTS-0267
- WHEN REFERRING TO TURNOUTS, DRAWING NUMBER MUST BE STATED AS "A" TO "P" TO INDICATE:
  - A-RIGHT HAND TURNOUT-POWER OPERATED SWITCH- MACHINE ON RIGHT-RBM FROG
  - B-RIGHT HAND TURNOUT-POWER OPERATED SWITCH- MACHINE ON LEFT-RBM FROG
  - C-LEFT HAND TURNOUT-POWER OPERATED SWITCH- MACHINE ON RIGHT-RBM FROG
  - D-LEFT HAND TURNOUT-POWER OPERATED SWITCH- MACHINE ON LEFT-RBM FROG
  - M-RIGHT HAND TURNOUT-HAND OPERATED SWITCH-RBM FROG
  - N-LEFT HAND TURNOUT-HAND OPERATED SWITCH-RBM FROG
  - I-RIGHT HAND TURNOUT-POWER OPERATED SWITCH- MACHINE ON RIGHT-SPRING FROG
  - J-RIGHT HAND TURNOUT-POWER OPERATED SWITCH- MACHINE ON LEFT-SPRING FROG
  - K-LEFT HAND TURNOUT-POWER OPERATED SWITCH- MACHINE ON RIGHT-SPRING FROG
  - L-LEFT HAND TURNOUT-POWER OPERATED SWITCH- MACHINE ON LEFT-SPRING FROG
  - E-RIGHT HAND TURNOUT-POWER OPERATED SWITCH- MACHINE ON RIGHT-SGM FROG
  - F-RIGHT HAND TURNOUT-POWER OPERATED SWITCH- MACHINE ON LEFT-SGM FROG
  - G-LEFT HAND TURNOUT-POWER OPERATED SWITCH- MACHINE ON RIGHT-SGM FROG
  - H-LEFT HAND TURNOUT-POWER OPERATED SWITCH- MACHINE ON LEFT-SGM FROG
  - O-RIGHT HAND TURNOUT-HAND OPERATED SWITCH-SGM FROG
  - P-LEFT HAND TURNOUT-HAND OPERATED SWITCH-SGM FROG
  - Q-RIGHT HAND TURNOUT-HAND OPERATED SWITCH-SPRING FROG
  - R-LEFT HAND TURNOUT-HAND OPERATED SWITCH-SPRING FROG
  - S-RIGHT HAND TURNOUT-SPRING SWITCH-RBM FROG
  - T-LEFT HAND TURNOUT-SPRING SWITCH-RBM FROG
  - U-RIGHT HAND TURNOUT-SPRING SWITCH-SPRING FROG
  - V-LEFT HAND TURNOUT-SPRING SWITCH-SPRING FROG
- FOR OTHER STANDARD TURNOUT COMBINATIONS SEE INDEX GTS-0000 SHEETS 1 TO 3.
- TURNOUT GEOMETRY, FOR TABLES OF DIMENSIONS AND OFFSETS SEE GTS-0002 NO.10 TURNOUTS.
- SWITCH STANDS ON HAND OPERATED AND SPRING SWITCH TURNOUTS ARE NORMALLY LOCATED ON THE DIVERGING SIDE. PRE-ASSEMBLED TURNOUTS SHALL FOLLOW THIS ARRANGEMENT UNLESS OTHERWISE SPECIFIED WHEN ORDERING.

METRIC CONVERSION: 1 inch=25.4mm, 1 foot=304.8mm

No.	Date	Revision	By	Approved
1	8/07/27	ADDED IMPERIAL TO METRIC CONVERSION NOTE		

Standard: NO. 10 TURNOUT-136 LB. RAIL  
16 1/2\"/>

Drawn GS Checked RLB Approved [Signature] Management

Date SEPT 15/2017 Plan Number GTS-0011AV Rev 1

REFERENCE: TS-0011AV\_R5 Sheet 1 OF 1





