

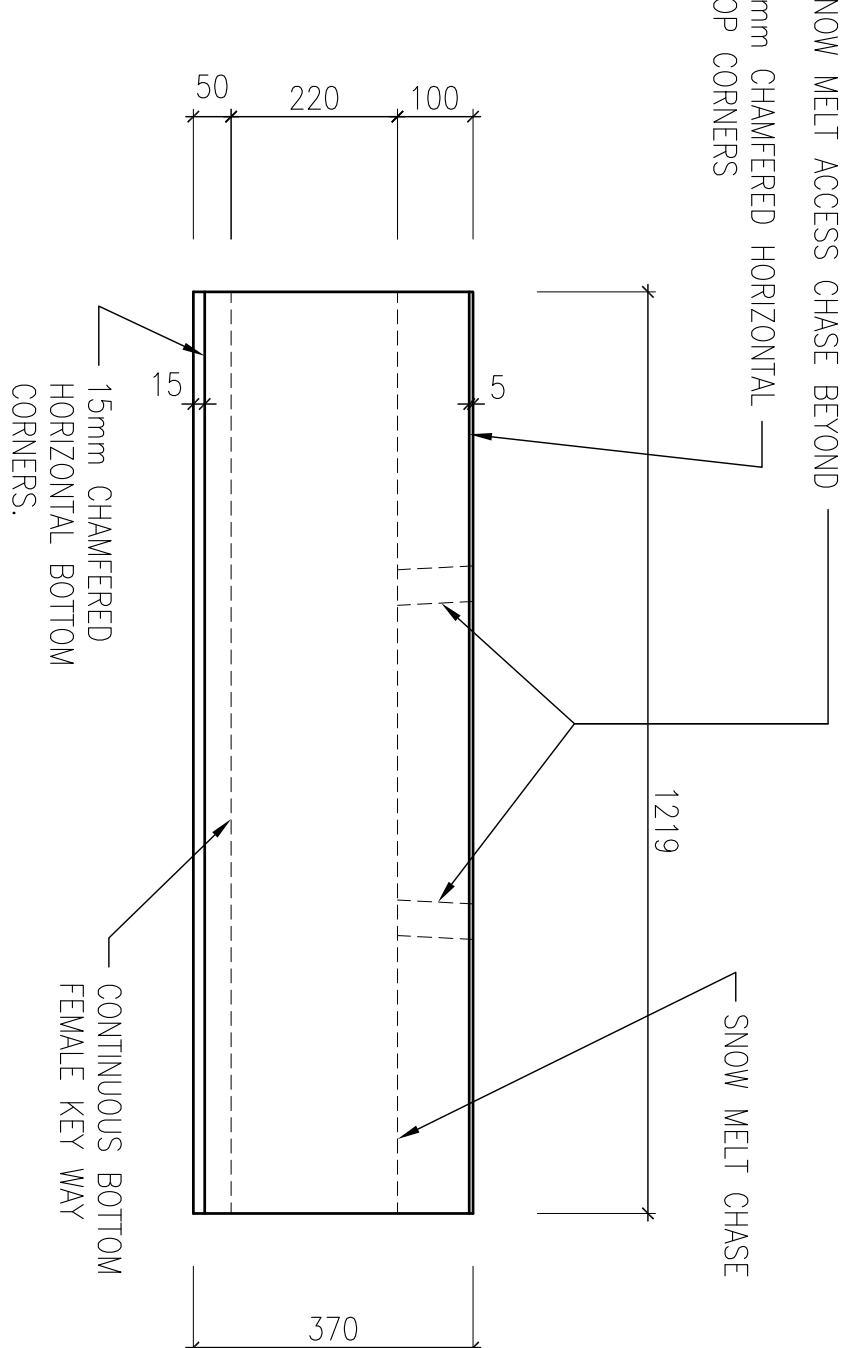
CONCRETE SPECIFICATIONS

- (a) concrete to remain serviceable when exposed to:
- (i) freeze-thaw cycles
 - (ii) de-icing chemicals
 - (iii) contact with soil composed of $\text{SO}_4 > 2\%$
 - (iv) soil retention forces and pedestrian and service vehicular traffic pattern loading
- (b) Concrete to be highly durable.
- (c) Concrete to be ultra-low in permeability.

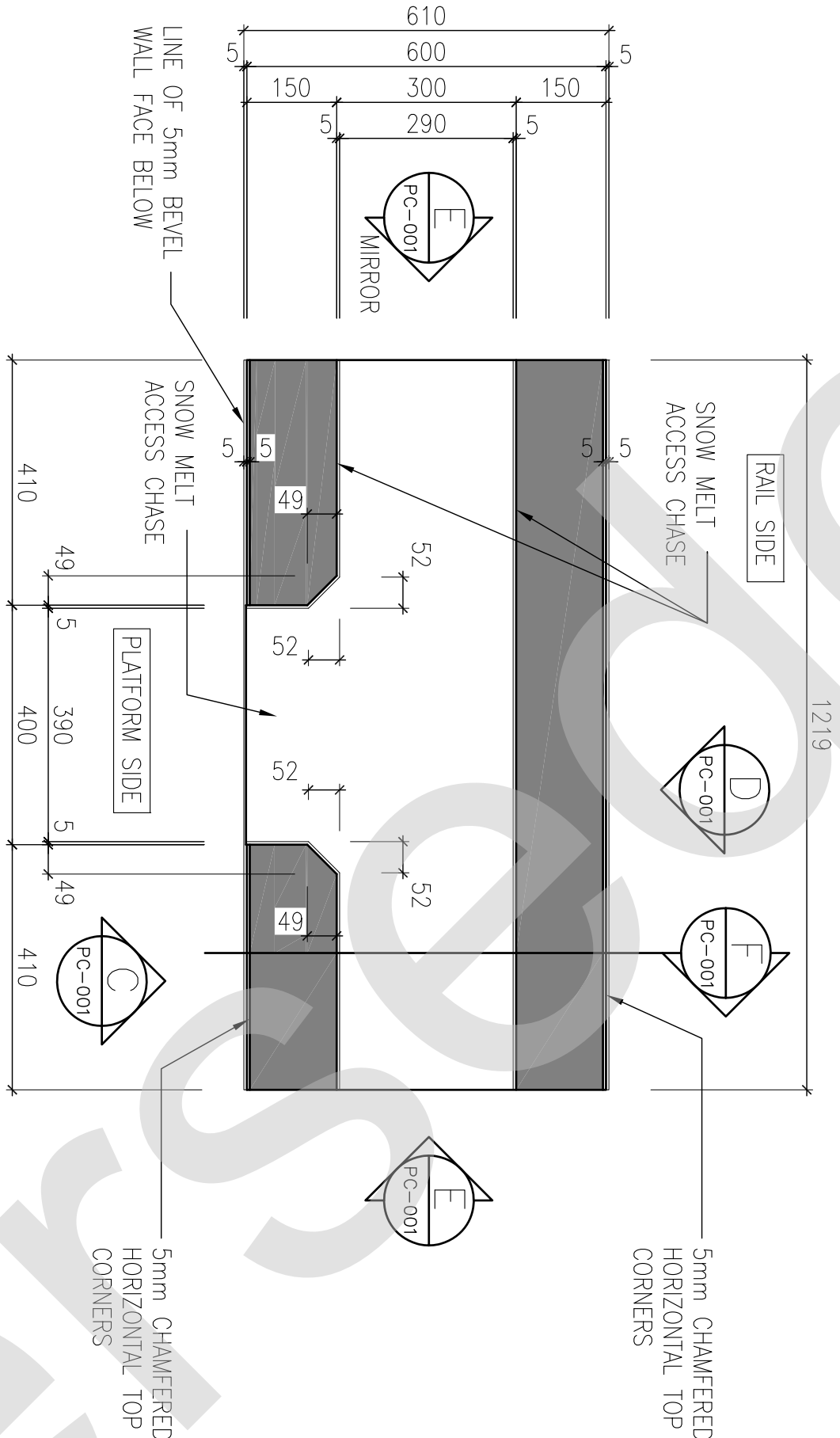
3. TECHNICAL REQUIREMENTS

- (v) Minimum compressive strength of 35 MPa at 28 days.
- (vi) Concrete quality and proportioning to CSA A23.1/A23.2-09 or latest version, and the following requirements:
 - (i) Cement to be "Portland Cement" to CSA Standard CAN-3-A5-M77 or latest version. Concrete to contain a minimum cement content of 365 kg per cubic metre of concrete.
 - (ii) Supplementary cementing material to be silica fume. Maximum silica fume content to be 10% of the total cement volume by weight.
 - (iii) Maximum aggregate size to be 20mm.
 - (iv) Ratio of water to cementing materials not to exceed 0.40.
 - (v) Concrete to contain an approved non-retarding agent to CSA A23.1/A23.2-09 or latest version, both of which to be added in accordance with Manufacturer's recommendations.
 - (vi) Air content range to be between 5% and 8%.
 - (vii) Slump at point of discharge to be 75mm \pm 25mm.
 - (viii) Concrete to include a crystalline water proofing admixture at a rate of 2% to 3% of the total cementitious content in accordance with the Manufacturer's recommendations. Use Admix C-1000 by Xypex, Krystol Internal Membrane (KIM) by Krylon, or approved alternate.
- (ix) The use of Chlorides in admixtures is Not Permitted.

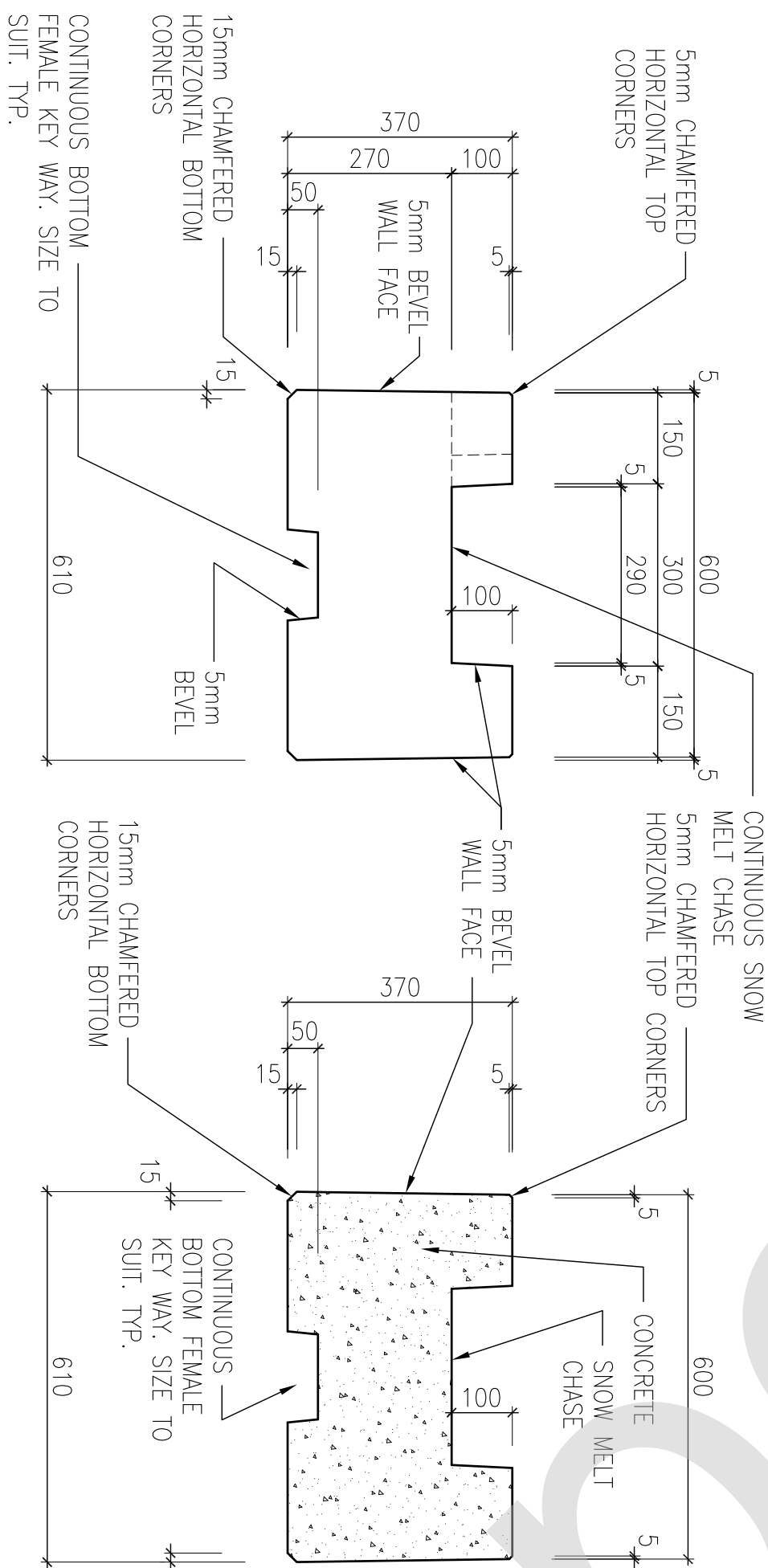
NOTE: THIS DRAWING IS PROVIDED FOR INSTRUCTIONAL DESIGN PURPOSES ONLY BASED ON METROLOGIC'S TRANSPARENT DESIGN GUIDELINES AND REQUIREMENTS. THE CONSULTANT SHALL VERIFY FOR LOCAL CODE COMPLIANCE, EXISTING SITE CONDITIONS AND INTER DISCIPLINARY DRAWING COORDINATION. ALL DIMENSIONS AND SPECIFICATIONS SHOULD BE VERIFIED BY CONSULTANT AND/OR CONTRACTOR BEFORE ACTUAL CONSTRUCTION BEGINS.



RAIL SIDE ELEVATION (CAP)



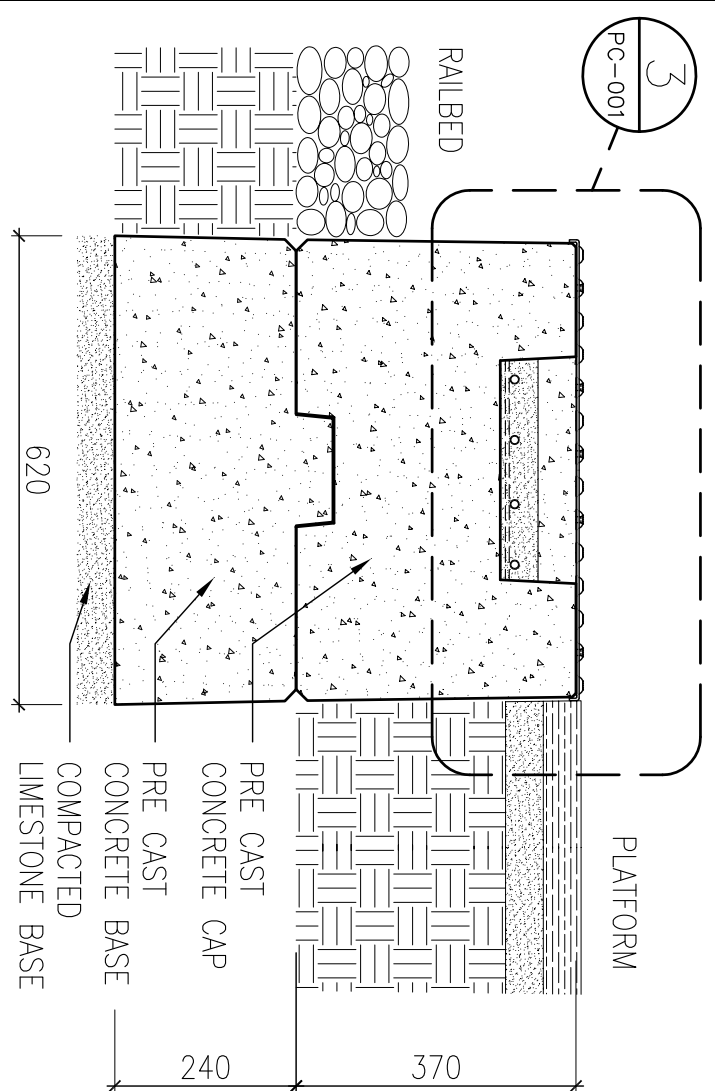
PLAN TOP VIEW (CAP) 
SCALE 1:10 



END ELEVATION (CAP) E

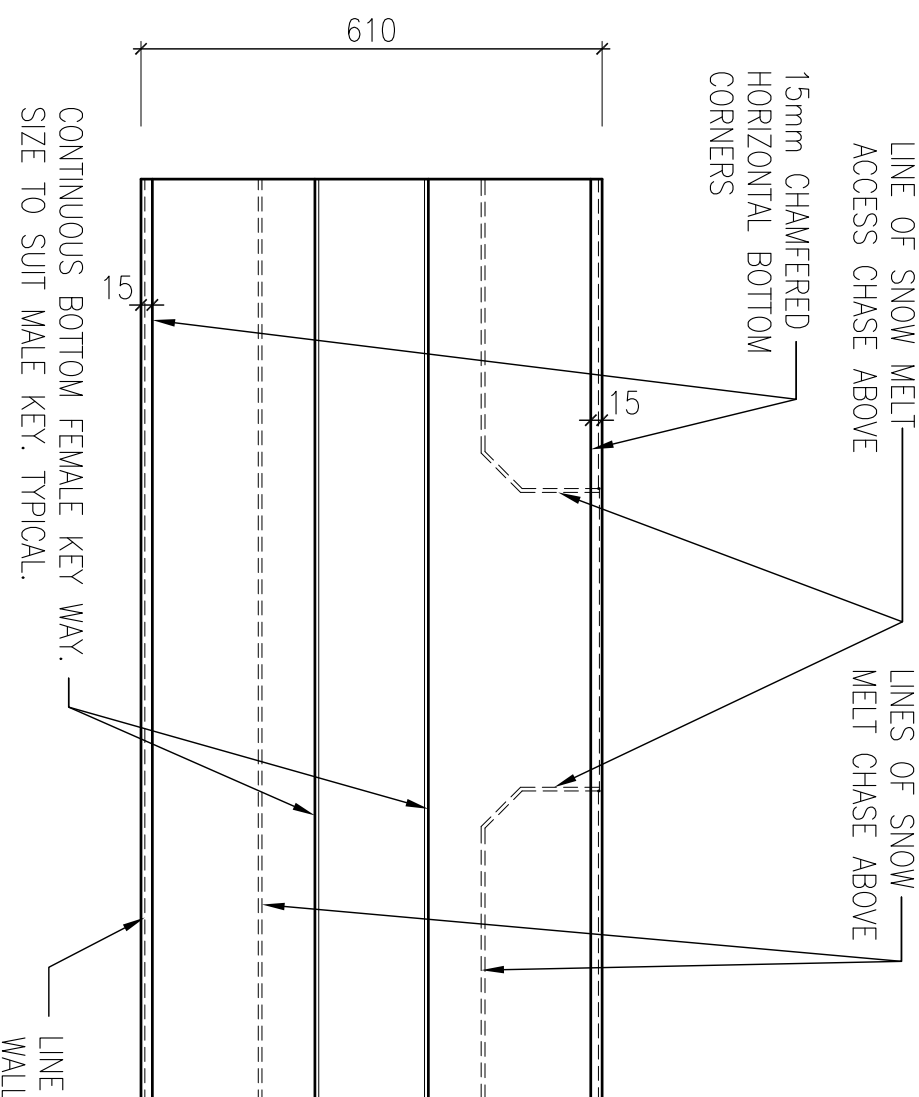
SCALE 1:10

PC-001



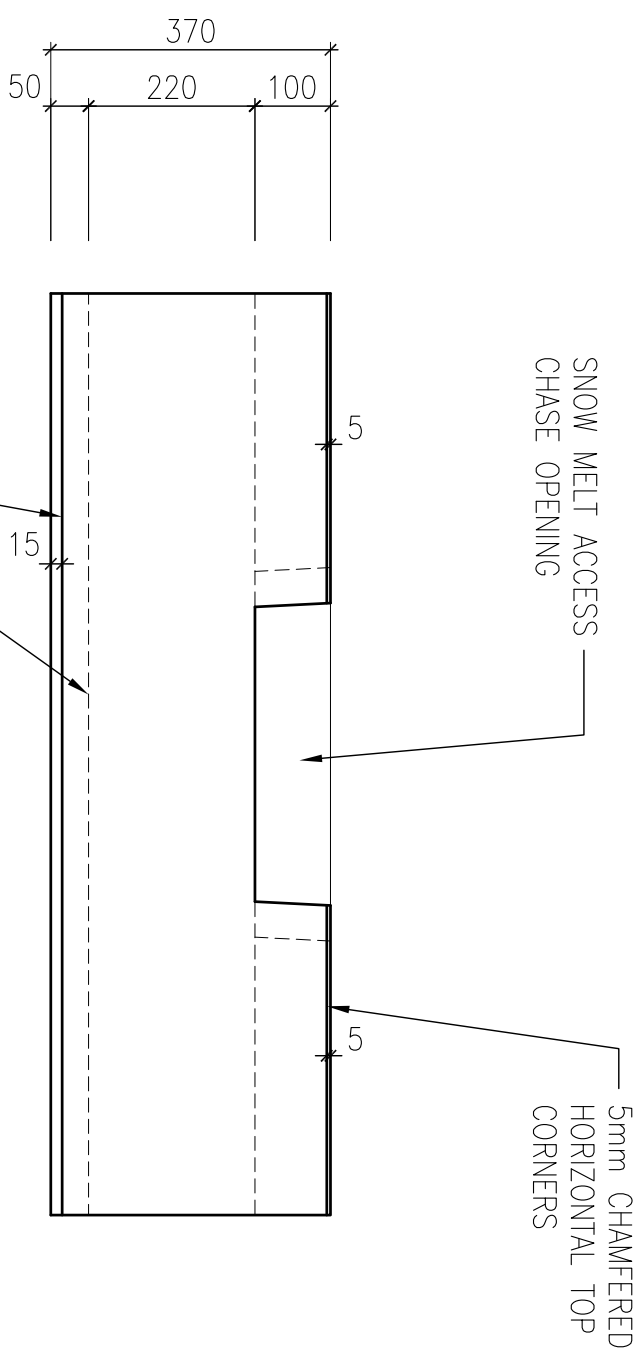
ASSEMBLED PLATFORM SECTION
SCALE 1:10
2
PC-001

NOTE: INSTALLATION DETAILS FOR REFERENCE PURPOSES



PLAN BOTTOM VIEW (CAP) B

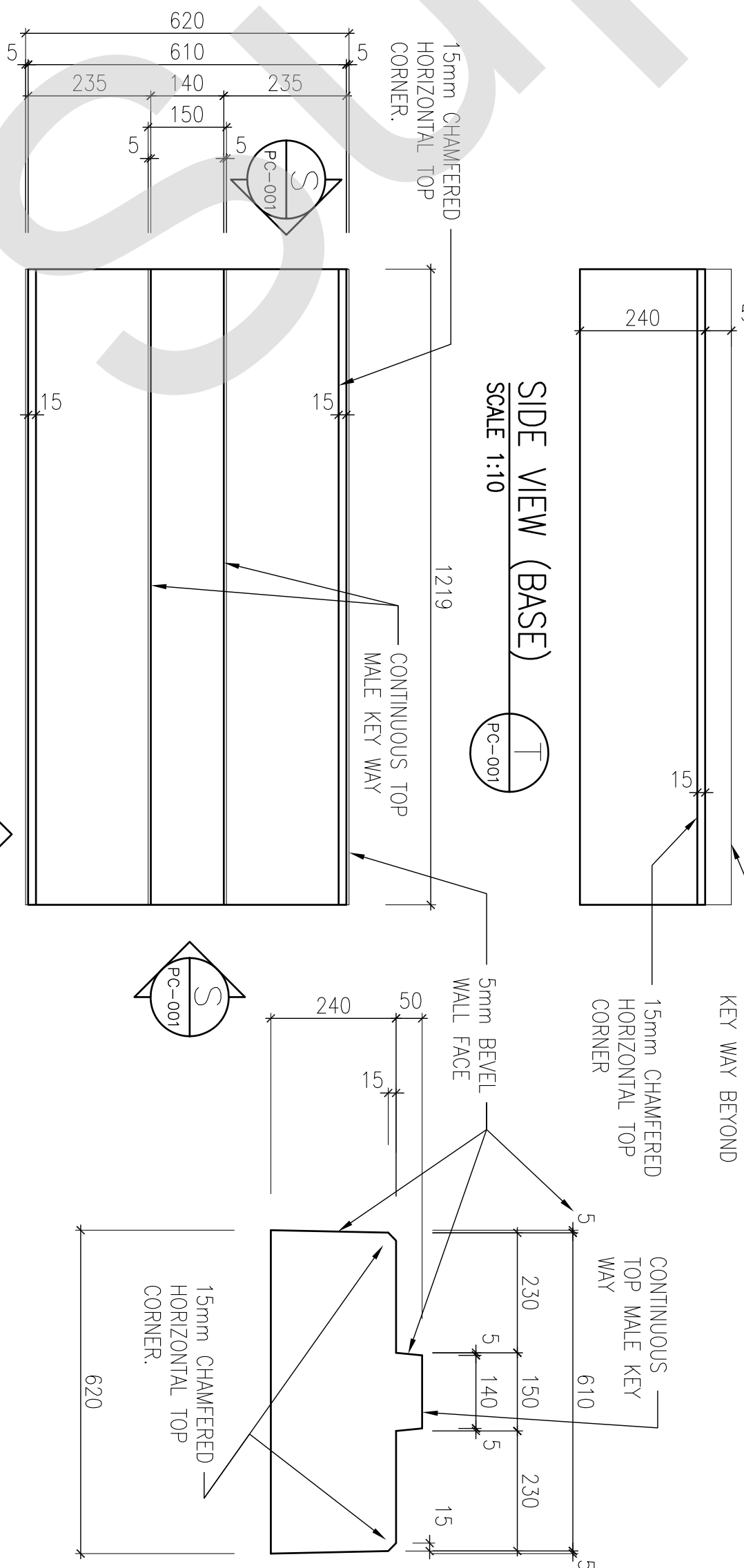
SCALE 1:10 PC-001



PLATFORM SIDE ELEVATION (CAP)

SCALE 1:10

PC-001



PLAN TOP VIEW (BASE)


SCALE 1:10

PC-001


END ELEVATION (BASE) S

GENERAL NOTE:
DO NOT SCALE THESE DRAWINGS. ANY ERROR OR
DISCREPANCY IS TO BE REPORTED IMMEDIATELY TO:

REFERENCE DRAWINGS		ISSUE		REVISIONS		DRAWN BY:	DESIGNED BY:
						CHECKED BY:	APPROVED BY:
	TITLE	REV.	DATE	ISSUED FOR	REV.	DATE	
DWG NO.							

SCALE: 1:10 FULL SIZE ONLY


A Division of METROLINX



PRECAST CONCRETE PLATFORM CURBS
TYPICAL CAP AND BASE CURBS
PLANS, ELEVATIONS & SECTIONS

CONTRACT NO.	DWG. NO. PC-001	REV.	SHEET
--------------	--------------------	------	-------