

LAND ACKNOWLEDGEMENT

Metrolinx acknowledges that we connect communities by building and operating transit within the traditional lands of the Anishinaabe, the Haudenosaunee and the Huron-Wendat peoples, for whom these lands continue to have great importance.

Treaties between First Nations and governments cover these lands, and the promises contained in these Treaties remain relevant to this day.

Metrolinx and its employees are committed to understanding the history of these lands and the continued impacts of colonization and take responsibility for actions to advance reconciliation.

Metrolinx will continue to seek the knowledge, expertise and experience of Indigenous partners and commits to doing business in a manner that is built on a foundation of trust, respect, and collaboration.



Session Guidelines

We greatly appreciate the community members who are here to take part in this public session.

To ensure that everyone can contribute to a positive and safe community experience, all participants shall adhere to the following *Code of Conduct*:

- Treat the presenters and participants with respect and understanding
- Acknowledge and appreciate the diversity of individuals and their situations
- Refrain from supporting or engaging in any form of discriminatory behaviour

Metrolinx is committed to fostering a safe and respectful environment.

We encourage respectful and constructive communication.



Ontario Line

Pape-Danforth & Sammon

Construction Liaison Committee

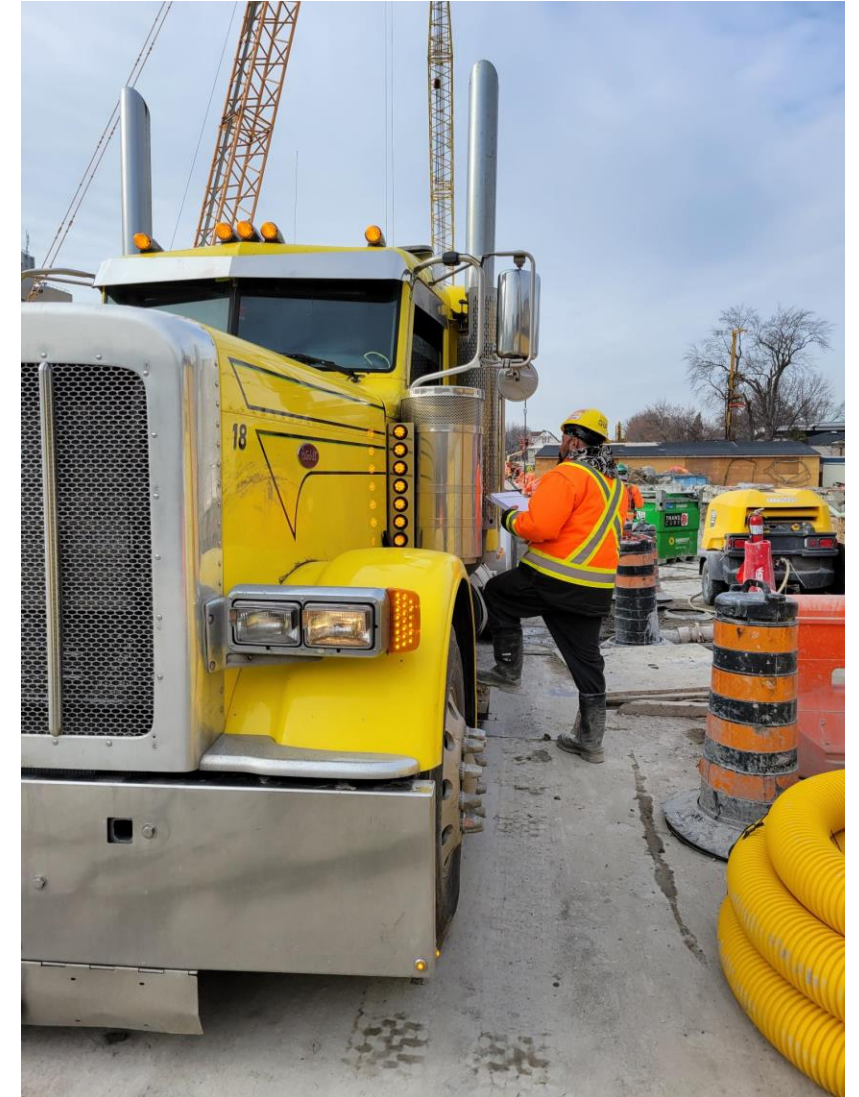
April 2, 2025

AGENDA

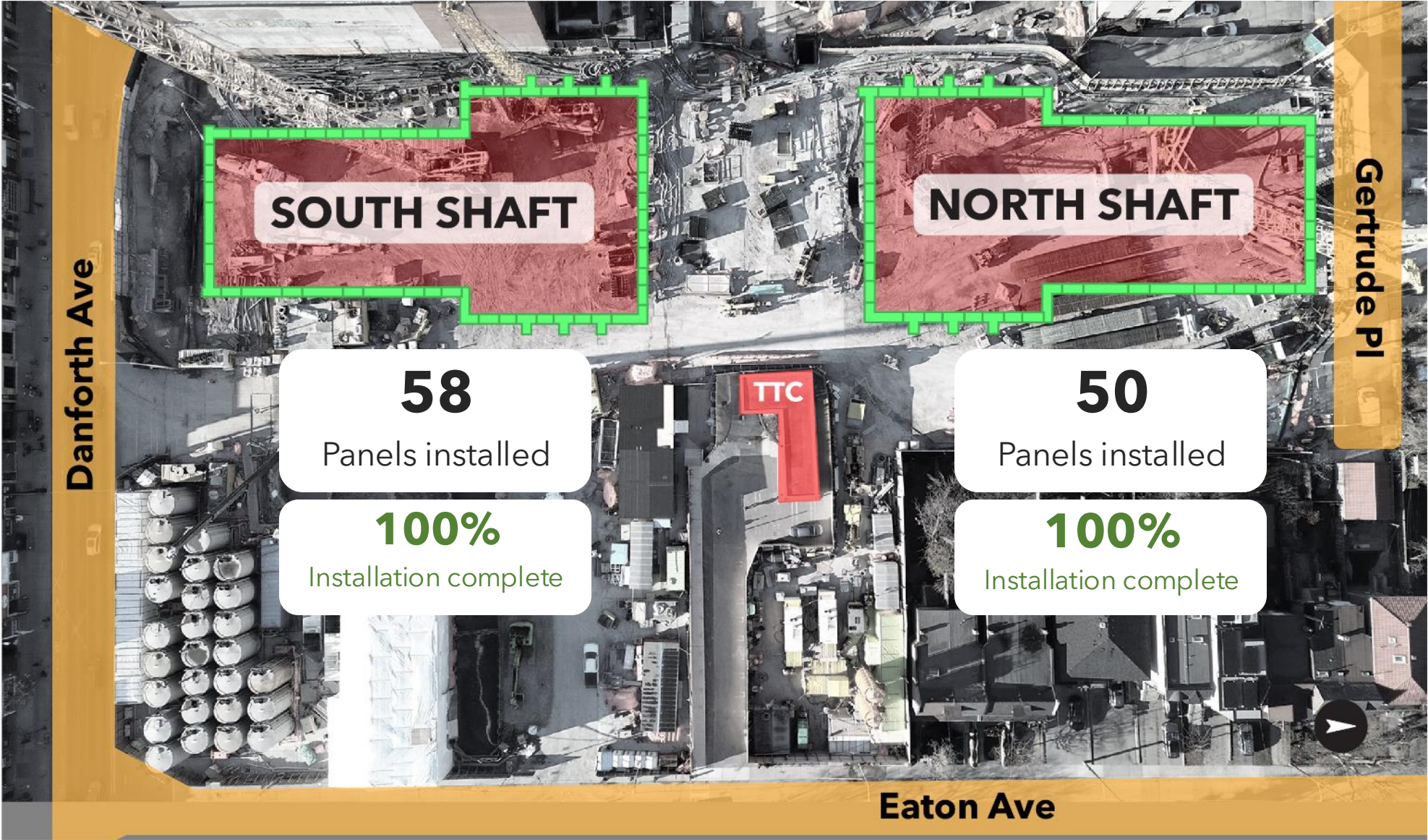
- 1. Managing Site-Specific Traffic Route Activity**
- 2. Pape-Danforth Progress & Site Changes**
- 3. Sammon EEB Progress & Site Changes**
- 4. Gertrude Jet Grouting Update**
- 5. Gertrude/Muriel Combined Sewer Repairs Update**
- 6. Upcoming Works: Traffic Decking Installation – Danforth Avenue**
- 7. Noise Exceedances: January-March**
- 8. Look-Ahead Schedule**

GIP's Commitment to Managing Site-Specific Traffic Route Activity

- Only drivers who have read and signed the Haul Route Acknowledgment Form are authorized to carry out work related to the removal of spoil from the Pape-SOE site.
- GIP has an approved truck list, to ensure that only approved drivers and trucks are allowed access to the site.
- GIP's gatekeepers have the Haul Route Acknowledgement Form and communicate directly with the drivers before they depart site to ensure they are aware of the site-specific traffic routes and obtain driver sign-off that they will follow the approved haul routes.
- GIP has shared the site-specific haul routes with all subcontractors and made it clear that GIP has a zero-tolerance policy for non-compliance.
- Any driver that fails to use the site-specific traffic routes will be prohibited from the project indefinitely.



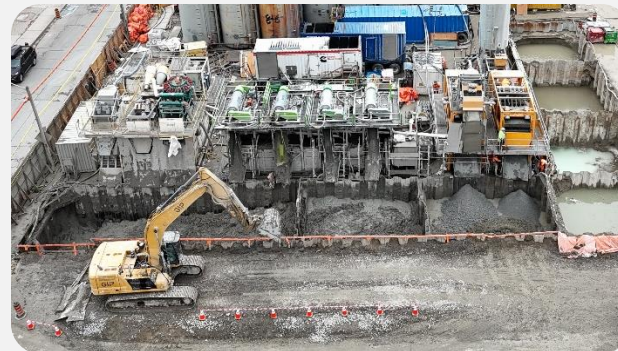
Pape-Danforth Slurry Wall Installation Progress



Pape-Danforth Site Changes

Slurry Plant

- Now that the slurry wall construction is completed, the slurry plant is being demobilized.



Mud mat

- Additional mud mats have been installed at access points to reduce mud tracking onto streets.



Danforth gate:



Gertrude gate:

Monitoring of Catch Basins

- As the snow melts as the weather warms up, GIP is being extra vigilant about monitoring the catch basins. The catch basins are reviewed daily and actions are taken immediately if issues are observed such as:
 - Bag ripped
 - Bag not in place/falling into the catch basin
 - Build up of material in the bag
 - Blockage such as ice, that wouldn't allow water to properly flow through the bag
- The filter bags are maintained (i.e., hydrovaced) and replaced in a timely manner when required.

*The catch basins that are monitored by GIP are indicated by the yellow squares in the images on the right.

Pape:



Sammon:



Bulk Excavation at Sammon EEB

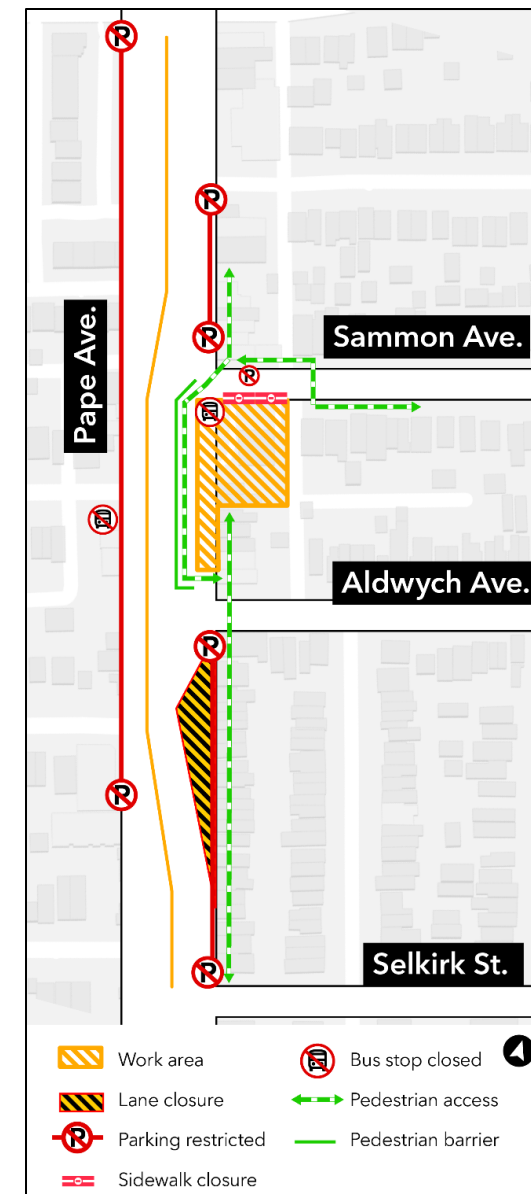
- In February crews begin to excavate within the foundation box formed by the slurry walls.
- Trucks will stage on Pape Avenue south of the site in the northbound lanes (the same location as where concrete trucks were staging during slurry wall works). 6-7 trucks will be staged during excavation as required.

Hours of work:

- Excavation until Fall 2025
- Monday - Friday over 24 hours, if required
- Saturdays from 6 a.m. - 7 p.m.

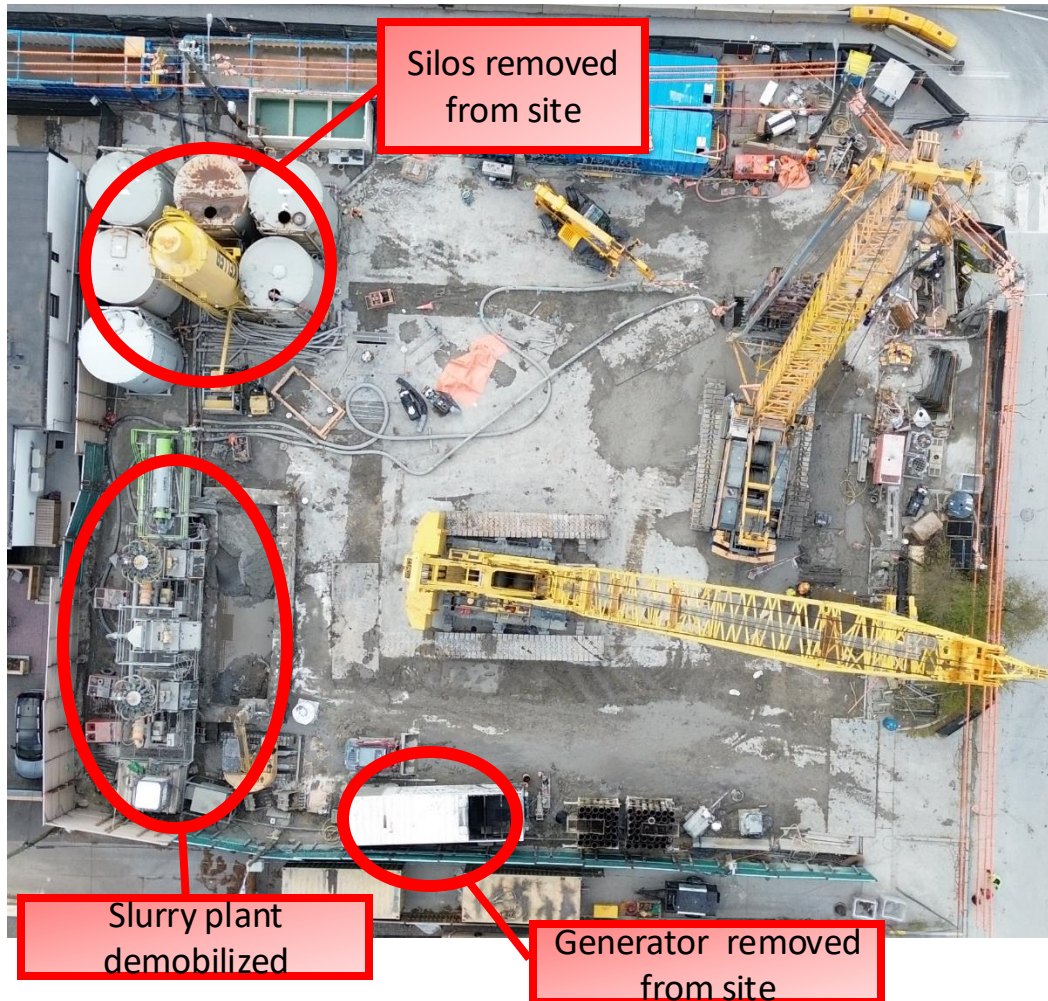
Dust Mitigations:

- The Sammon site is significantly smaller than the Pape site, giving less space for equipment to move around and generate dust.
- Mud mats have been installed at the Sammon site gate.



Sammon EEB site changes

Before slurry plant demobilization:



Site currently (excavation and bracing works):



Sammon Emergency Exit Building site improvements

Sound Wall

- The sound wall on the East side of site was raised and pushed to the East.



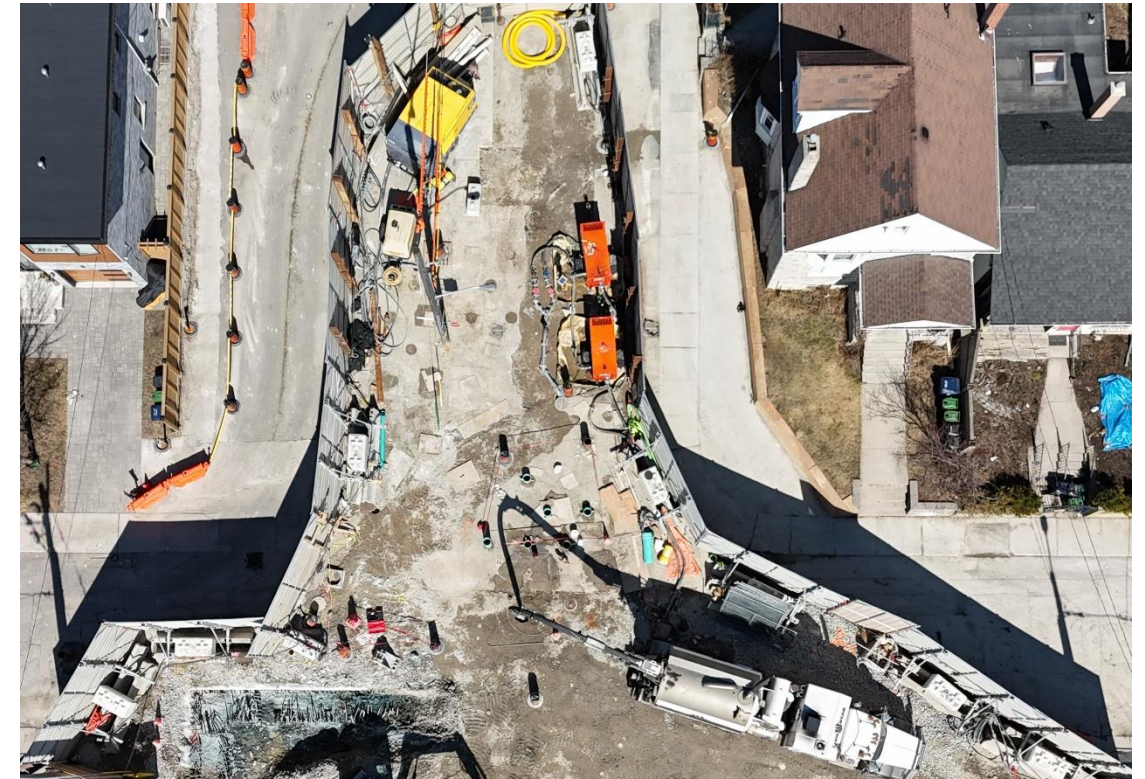
Mud mats

- Mud mats have been installed at access points to reduce mud tracking onto streets.



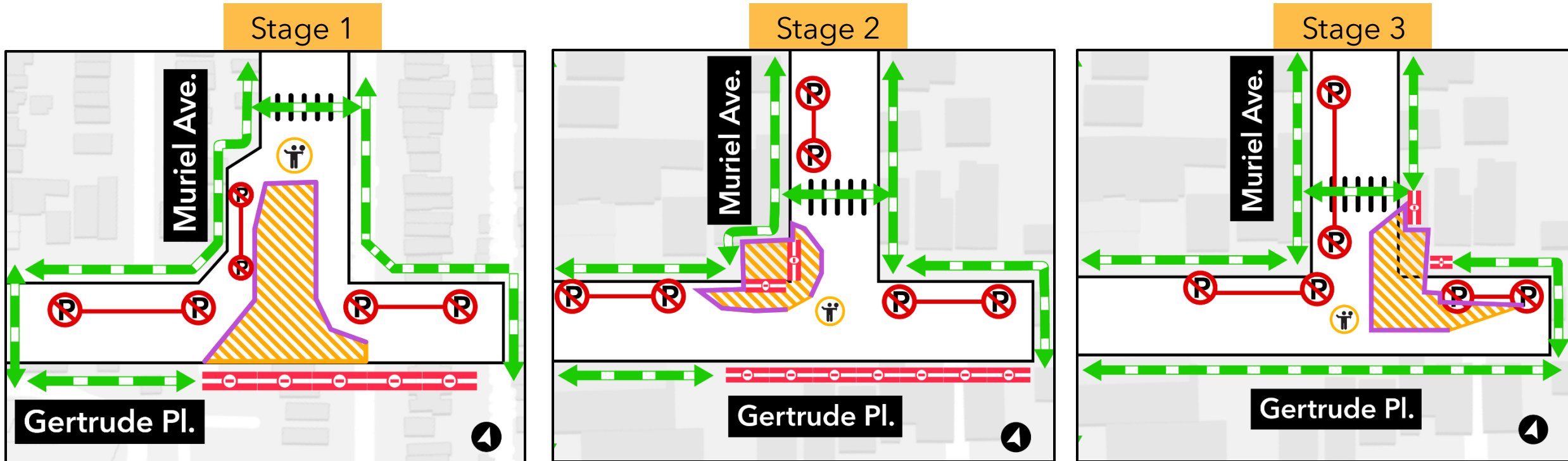
Gertrude Jet Grouting Works

- Jet grouting work began in early January 2025 on Gertrude Place near Muriel Avenue.
- This work will take place in three stages from Monday to Saturday during the day shift for approximately six months.
- The first stage is ongoing and expected to be completed by **September 2025** (pending completion of emergency sewer works).
- The second stage is expected to take place from **September 2025 to November 2025**.
- The third stage is expected to take place from **November 2025 to December 2025**.
- Jet grouting is a soil stabilization technique that involves injecting grout deep into the soil. The grout mixes with the soil and hardens, adding stability underneath existing structures near where excavation work will occur.



Site setup at Gertrude and Muriel

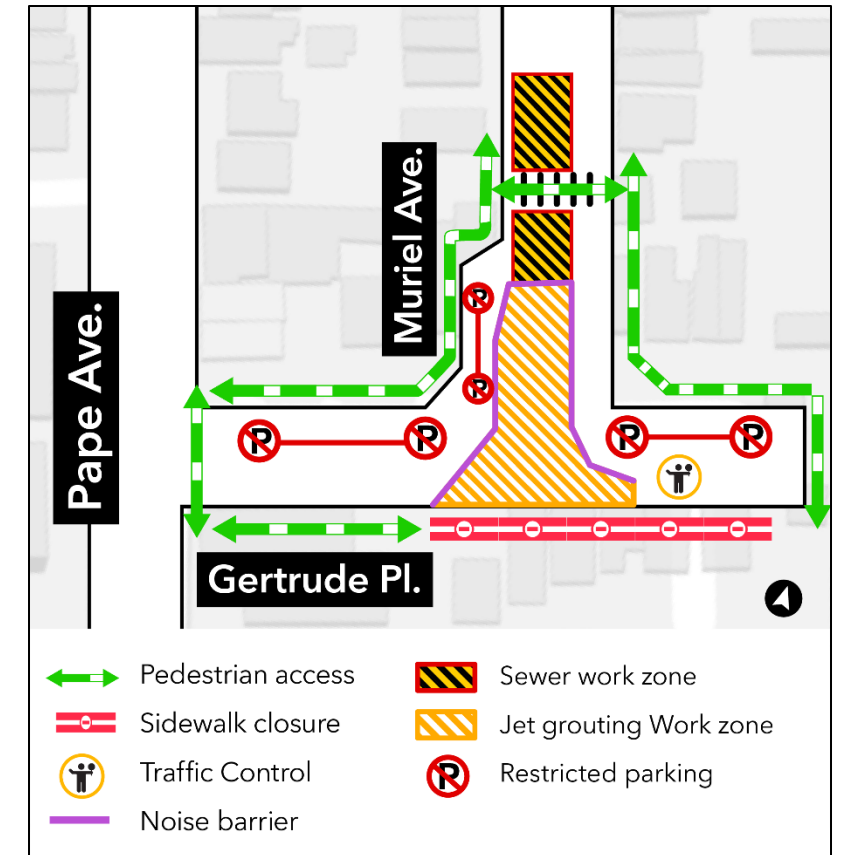
Gertrude Jet Grouting Stages



-  Pedestrian access
-  Work zone
-  Sidewalk closure
-  Restricted parking
-  Traffic Control
-  Noise barrier

Gertrude and Muriel Emergency Combined Sewer Works

- In January, grout was discovered in the combined sewer on Muriel Avenue, causing a blockage and an investigation is ongoing.
- Crews are undertaking an emergency mitigation of the combined sewer.
- A hydro-vacuum truck was used to uncover utilities during the replacement/mitigation works.
- Muriel Avenue between Selkirk Street and Gertrude Place was restricted to local traffic only for the duration of the works.



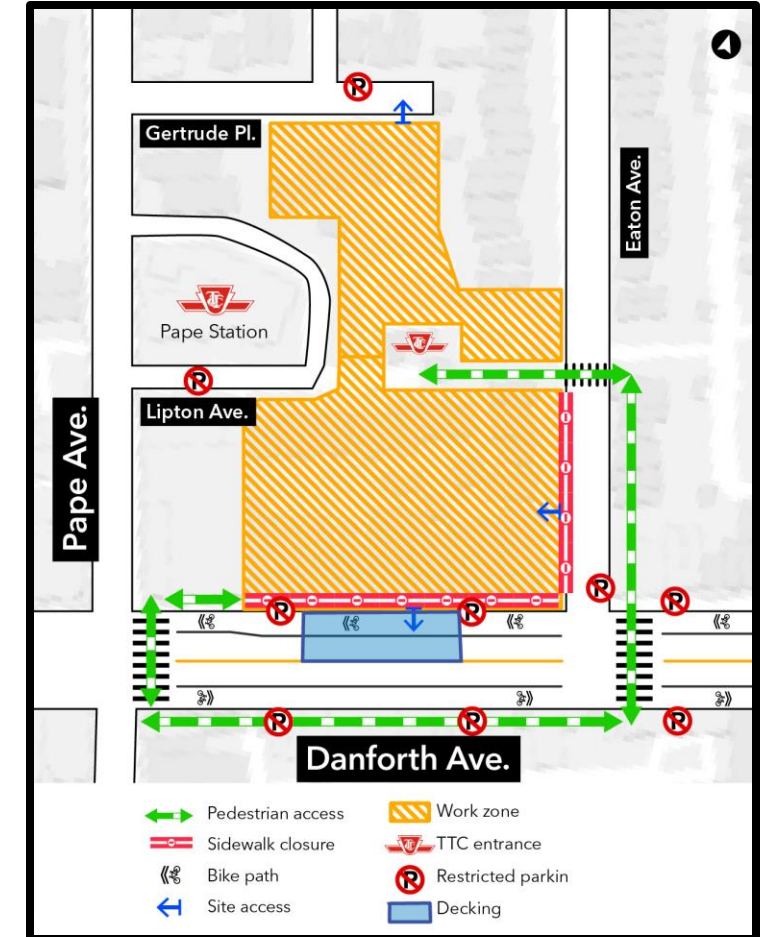
Site setup at Gertrude and Muriel

Traffic Decking Works at Danforth

- The jet grout column area on Danforth will expand into the road. In order to maintain two-way traffic along Danforth, traffic decking will be placed over the South shaft so the west bound road and bike lanes can move around the jet grout work zone.
- Decking provides a temporary surface over which cars and bikes can travel while work happens underneath. The tentative installation date for traffic decking on Danforth Avenue is Q2 2025
- The construction work for the decking will occur within the site hoarding.



Example of what traffic decking looks like



Registered Exceedances at Noise Receptors: January 2025

No	Day/Time of Exceedances	Detail	Location	Source	Corrective Action	Complaint Received (Y/N)
1	January 4 th - morning and early afternoon	Noise	Eaton Ave, Gertrude Pl and Pape Ave	Slurry Wall Milling Operations	Note 1 : Contractor investigated and confirmed exceedances were minor. Contractor continued to monitor while works continued	N
2	January 10 th (late evening) and January 11 th (morning and early afternoon)	Noise	Eaton Ave, Gertrude Pl, and Pape Ave	Slurry Wall Milling Operations	Note 1	N
3	January 17 th (late evening) and January 18 th (morning and afternoon)	Noise	Eaton Ave, Gertrude Pl, Danforth Ave and Pape Ave	Slurry Wall Milling Operations	Note 1	N
4	January 23 rd - late morning and late evening	Noise	Gertrude Pl	Emergency sewer works at Gertrude and Muriel.	Note 1	N
5	January 24 th - late evening	Noise	Danforth Ave	Slurry Wall Milling Operations	Note 1	N
6	January 25 th - morning, afternoon and early evening	Noise	Eaton Ave, Gertrude Pl, Danforth Ave and Pape Ave	Emergency sewer works at Gertrude and Muriel.	Note 1	N
7	January 30 th (late evening) and January 31 st (morning and evening)	Noise	Eaton Ave, Gertrude Pl and Danforth Ave	Slurry Wall Milling Operations and Emergency sewer works at Gertrude and Muriel.	Note 1	Y

Registered Exceedances at Noise Receptors: February 2025

No	Day/Time of Exceedances	Detail	Location	Source	Corrective Action	Complaint Received (Y/N)
1	Saturday, February 1 st - morning and early afternoon	Noise	Eaton Ave, Gertrude Pl and Danforth Ave	Slurry Wall Milling Operations and Emergency sewer works at Gertrude and Muriel.	Note 1 : Contractor investigated and confirmed exceedances were minor. Contractor continued to monitor while works continued	N
2	Monday, February 3 rd - late evening	Noise	Danforth Ave	Slurry Wall Milling Operations	Note 1	N
3	Thursday, February 6 th - early morning	Noise	Pape Ave	Slurry Wall Milling Operations	Note 1	N
4	Friday, February 7 th (late evening) to Saturday, February 8 th (morning)	Noise	Eaton Ave, Gertrude Pl, Danforth Ave and Pape Ave	Slurry Wall Milling Operations and Emergency sewer works at Gertrude and Muriel.	Note 1	N
5	Wednesday, February 12 th - early morning	Noise	Danforth Ave	Slurry Wall Milling Operations	Note 1	N
6	Thursday, February 13 th - early morning	Noise	Gertrude Pl	Emergency sewer works at Gertrude and Muriel.		
7	Friday, February 14 th (late evening) to Saturday, February 15 th (morning)	Noise	Eaton Ave, Gertrude Pl, Danforth Ave and Pape Ave	Slurry Wall Milling Operations and Emergency sewer works at Gertrude and Muriel.	Note 1	N
8	Thursday, February 20 th - morning	Noise	Gertrude Pl	Emergency sewer works at Gertrude and Muriel.	Note 1	N
9	Friday, February 21 st - early morning and late evening	Noise	Gertrude Pl and Danforth Ave	Slurry Wall Milling Operations and Emergency sewer works at Gertrude and Muriel.	Note 1	N
10	Saturday, February 22 nd - morning and early afternoon	Noise	Eaton Ave, Gertrude Pl, Danforth Ave and Pape Ave	Slurry Wall Milling Operations and Emergency sewer works at Gertrude and Muriel.	Note 1	N
11	Tuesday, February 25 th - early morning	Noise	Pape Ave	Slurry Wall Milling Operations	Note 1	N
12	Friday, February 28 th - early morning and late evening	Noise	Eaton Ave, Gertrude Pl and Danforth Ave	Slurry Wall Milling Operations and Emergency sewer works at Gertrude and Muriel.	Note 1	N

Registered Exceedances at Noise Receptors: March 2025

No	Day/Time of Exceedances	Detail	Location	Source	Corrective Action	Complaint Received (Y/N)
1	Saturday, March 1 st - morning	Noise	Eaton Ave, Gertrude Pl, Danforth Ave and Pape Ave	Slurry Wall Milling Operations	Note 1	N
2	Wednesday, March 5 th - afternoon	Noise	Pape Ave	Slurry Wall Milling Operations	Note 1	Y
3	Friday, March 7 th (late evening) to Saturday, March 8 th (early morning)	Noise	Eaton Ave and Gertrude Pl	Slurry Wall Milling Operations	Note 1	Y (on March 8 th)
4	Friday, March 14 th - late evening	Noise	Gertrude Pl	Slurry Wall Milling Operations	Note 1	N
5	Saturday, March 15 th - morning	Noise	Eaton Ave, Gertrude Pl and Danforth Ave	Slurry Wall Milling Operations	Note 1	N
6	Friday, March 21 st - late evening to Saturday, March 22 nd (early morning)	Noise	Eaton Ave and Danforth Ave	Slurry Wall Milling Operations	Note 1	N
7	Monday, March 24 th - late evening	Noise	Eaton Ave	Slurry Wall Milling Operations	Note 1	N
8	Saturday, March 29 th - morning	Noise	Gertrude Pl and Danforth Ave	Slurry Wall Milling Operations	Note 1	N

Look-Ahead Schedule:

#	Activity	Location	Expected Start	Expected Duration	Impact	Hours of Work	Mitigations
1	Pape Slurry Wall Construction	Pape	June 2024	Completed (late March)	Noise	Monday – Friday: 24 hrs Saturday: 6am-7pm	Noise wall Slurry plant enclosure
2	Jet Grouting	Gertrude	December 2024	December 2025	Noise	Monday – Friday: 7am-7pm*	Noise wall
3	Shaft Excavation	Sammon	February 2025	October 2025	Noise	Monday – Friday: 24 hrs Saturday: 6am-7pm	Noise wall
4	Traffic Decking Installation	Danforth	March 2025	May 2025	Noise	Monday – Friday: 24 hrs Saturday: 6am-7pm	N/A
5	Shaft Excavation	Pape	Pending (earliest expected start is summer 2025)	TBC	Noise	Monday – Friday: 24 hrs Saturday: 6am-7pm	Noise wall

- *On Saturdays, maintenance (including hydrovacating) will be done for jet grouting works at the gertrude location. All other works will proceed as normal from 6am-7pm on Saturdays. Jet grouting works include hauling.

Discussion

