

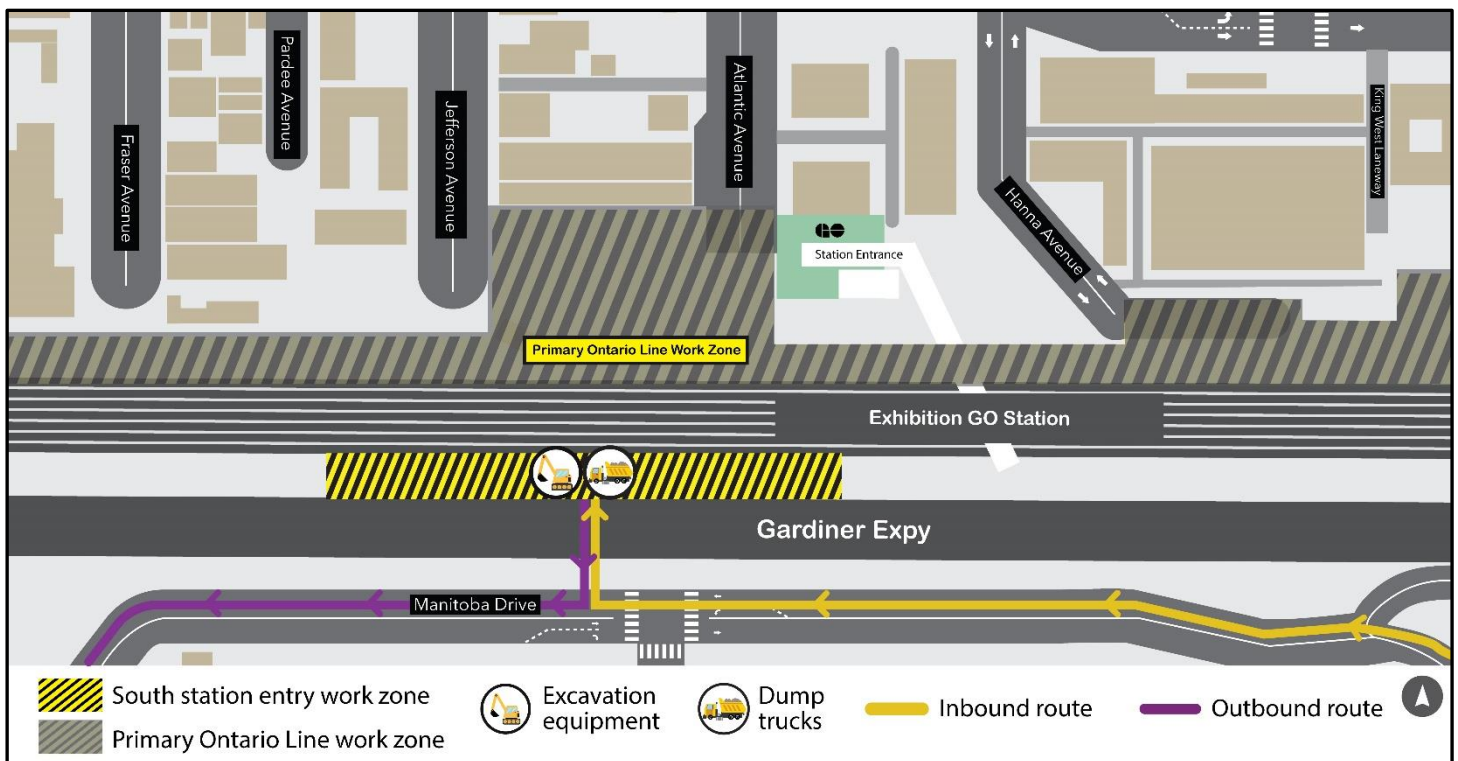
Exhibition Station south entrance construction preparation

Expected Start Date: As early as April 14, 2025

Expected Duration: Through May 11, 2025

Hours of Work: Monday to Friday, from 7:00 A.M. to 5:00 P.M., and from 11:00 P.M. to 5:00 A.M.

Map of work area:



What is happening?

To accommodate the future Ontario Line subway and expanded Exhibition Station, crews will commence work to support a new station entry, by demolishing an existing retaining wall, south of the GO Lakeshore West rail corridor.

Additional foundational and grading works are planned as part of the next phase of construction.

This phase of work will take place west of the existing Exhibition GO Station entrance, and north of the Gardiner Expressway.

Information as of: April 3, 2025

What to expect

- During this phase of construction crews will use excavators, demolition equipment and dump trucks to dismantle and remove an existing wall demolition, as they prepare the site for future construction supporting the Ontario Line and Exhibition Station.
- Trucks entering the site will travel from Lakeshore Boulevard West to Strachan Avenue northbound and enter the Exhibition Place grounds via Manitoba Drive, and turning onto Manitoba Drive westbound, and then into the work site, noted on the above map.
- Trucks exiting the site will travel westbound on Manitoba Drive, towards Princes' Boulevard, then use British Columbia Road westbound, turning on to Lakeshore Boulevard West westbound then entering the Gardiner Expressway.
- Traffic flag persons will be in place to ensure safety, and that vehicle, pedestrian and customer access will be maintained through Exhibition Station to Liberty Village through and Exhibition Place, using the accessible tunnel or pedestrian bridge (when available), without impacts.
- Work will occur Monday to Friday in two shifts, from 7:00 a.m. to 5:00 p.m., and then overnight, from 11:00 p.m. to 5:00 a.m.
- There will be no impact to GO Train operations or service.
- Residents and businesses can expect to hear noise from demolition equipment working between the Gardiner Expressway and the rail corridor.
- Work may be postponed or re-scheduled due to unforeseen circumstances.
- All necessary construction permits have been obtained.
- For more information about upcoming station work, please visit [metrolinx.com/ontarioline](https://www.metrolinx.com/ontarioline) or sign up for our e-newsletter.

Contact us:

Call us 24/7 at: [416-202-5100](tel:416-202-5100)

Write to us at: ontarioline@metrolinx.com

Find us on X, Facebook, and Instagram:

[@ontarioline](#)

Visit the website: www.metrolinx.com/ontarioline

Visit our community offices:

770 Queen Street East (near Queen & Broadview)

General hours:

Mondays, Tuesdays, & Fridays: 9:00 a.m. - 5:00 p.m.

Wednesday: 1:00 p.m. to 6:00 p.m.

Thursday: 10:00 a.m. to 6:00 p.m.

Thorncliffe Park:

East York Town Centre

45 Overlea Blvd., Toronto, ON M4H 1C3

Unit 153 (across from the Rogers store)

General hours:

Monday - Friday, 9 a.m. - 5 p.m.