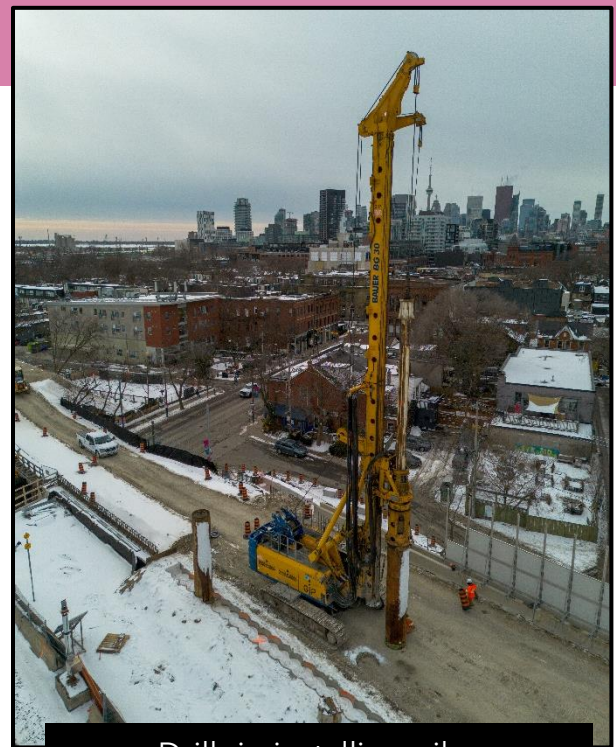
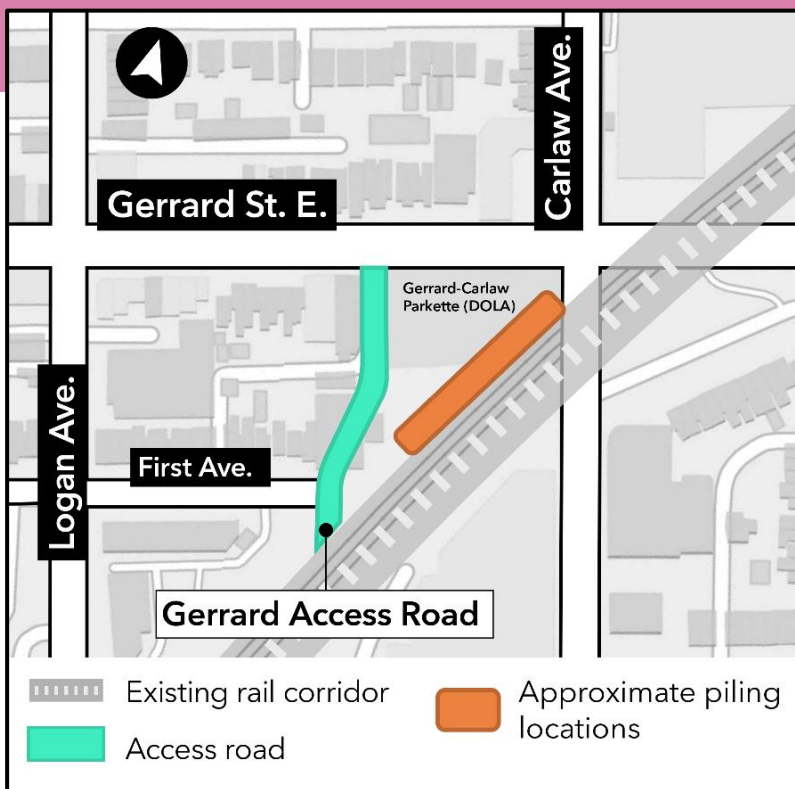


Access road construction and piling at the Gerrard-Carlaw bridge

Start dates and durations:

- **Access road construction:** As early as Saturday, April 12, 2025 for one week
- **Piling:** As early as Thursday, May 1, 2025 for two months

Hours of work: Monday – Friday, between 7 a.m. – 7 p.m., with some weekend work on Saturdays between 7 a.m. – 5 p.m. and Sundays from 9 a.m. – 5 p.m.



Drill rig installing piles

What is happening?

- As early as Saturday April 12, a new access road will be built on the south side of Gerrard Street East, west of Carlaw Avenue.
- This access road is required to complete piling work for the future Gerrard subway station and build new retaining walls and noise barriers along the rail corridor.
- After the access road is completed, prep work such as grading, compaction, and concrete works will take place within the rail corridor (around the bridge) until Thursday April 24.
- As early as Friday April 25, a drill rig will be set up within the rail corridor. Piling will then begin on Thursday May 1 or shortly thereafter.
- **The Gerrard-Carlaw Parkette will remain open throughout these two activities.**
- Piling and access road construction will take place during the daytime from Monday to Friday between 7 a.m. – 7 p.m.

- Occasional weekend work may be required between 7 a.m. – 5 p.m. on Saturdays and 9 a.m. – 5 p.m. on Sundays. Advance notice will be provided for weekend work.
- The Gerrard access road will remain in operation until December 2025.

What to expect

- Temporary construction fence will be installed west and south of the Gerrard-Carlaw Parkette to complete the access road and piling work.
- Traffic control personnel will be present to assist vehicles and pedestrians.
- Where space allows, solid noise barriers (wood hoarding) will be installed between the work areas and Parkette.
- A drill rig (pictured above) will be used to install the piles. Construction activities will include drilling, excavation, hauling, rebar and steel installation, and concrete pouring.
- The drill rig will dig circular holes into the ground which will then be filled with steel, rebar, and concrete to form piles.
- Secant piling is the process of overlapping piles with one another to form a solid concrete wall. These walls will be installed to support the future Gerrard station.
- Construction equipment will enter and exit the rail corridor from the access road off Gerrard Street.
- Noise and vibration from construction equipment including vibratory rollers, drill rigs, concrete trucks, and other machinery can be expected.
- Noise and vibration monitors are in place to ensure acceptable levels are maintained.
- Construction equipment and materials will be properly secured within the work zones.
- Residents will notice construction crews, equipment, installation of safety hoarding and material deliveries near the construction areas shown on the image above.
- Work may be delayed due to weather conditions or unforeseen circumstances.

About the project

- 15.6-kilometre subway line that will make it faster and easier to travel within Toronto and beyond.
- 15 stops and more than 40 transit connections, including GO, TTC, and more.
- Approximately 30 minutes from one end of the line to the other.
- 28,000 fewer cars on the road each day.

Contact us:

Call us 24/7 at: [416-202-5100](tel:416-202-5100)

Write to us at: ontarioline@metrolinx.com

Find us on Twitter, Facebook, and

Instagram: [@ontarioline](https://www.instagram.com/ontarioline)

Visit the website:

www.metrolinx.com/ontarioline

Visit our community offices:

770 Queen Street East (near Queen & Broadview)

General hours:

Mondays, Tuesdays, and Fridays: 9:00 a.m. to 5:00 p.m.

Wednesdays: 1:00 p.m. to 6:00 p.m.

Thursdays: 10:00 a.m. to 6:00 p.m.

Thorncliffe Park:

East York Town Centre

45 Overlea Blvd., Toronto, ON M4H 1C3

Unit 153 (across from the Rogers store)

General hours:

Monday to Friday, 9 a.m. to 5 p.m.