

# EXTENDED: Temporary overnight pedestrian closure at Yonge Street and Queen Street

**Expected start date:** As early as March 2, 2025

**Duration:** Multiple shifts, scheduled intermittently, **extended to June 2025**

**Hours of work:** Overnight, 9:00 p.m. to 7:00 a.m.

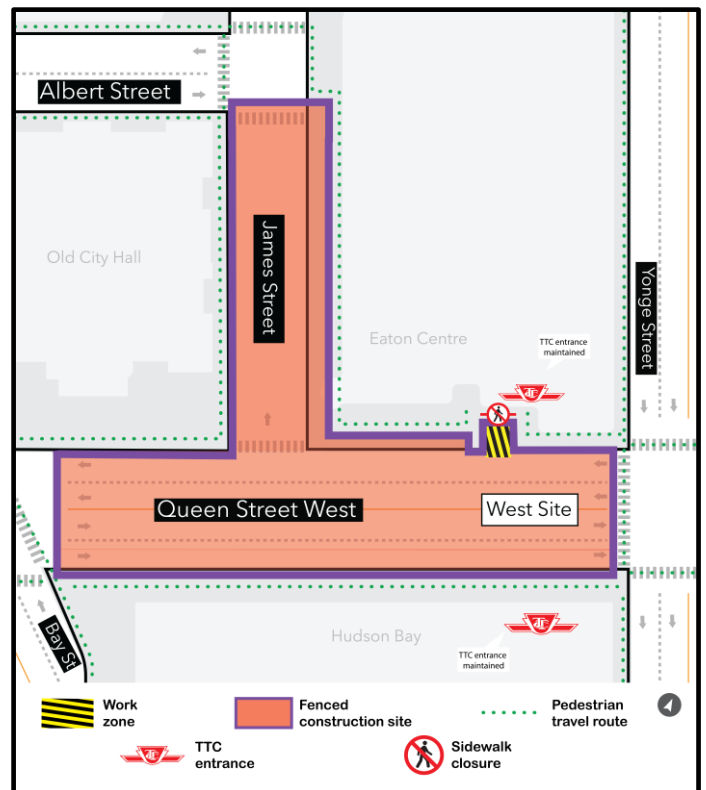
## What is happening?

Construction is under way for the Ontario Line station at Queen. As part of the continued construction activities at the future station site, sewer and watermain investigations are required in front of the TTC entrance at Yonge Street and Queen Street.

Construction crews will be testing utilities and sewers within the construction site, in the areas shown in yellow and black on the map.

## What to expect

- Sewer and watermain investigations will continue to occur intermittently overnight, from 9:00 p.m. to 7:00 a.m. Full access to the pedestrian sidewalk is expected to be restored by 7:00 am each day.
- **This work is expected to be extended through June 2025, including weekdays and weekends.**
- To conduct the work, crews will drill into the sidewalk to inspect utilities and sewers underground. Once complete, the drill areas will be restored.
- To minimize impact, work may not take place consecutively and may be intermittently scheduled during this period.
- During this work, pedestrian access will be temporarily modified; safe pedestrian access will be maintained along the work zone.
- Access to commercial and residential buildings will be maintained, and TTC entrances will be accessible at all times.
- Residents and businesses near the work zones will hear noise from heavy equipment including a hydrovac truck, drill rig, and saw cutter.
- Traffic signage will be in place along the work zone to direct pedestrians in the area.
- All necessary construction permits will be in place prior to the commencement of the work.



## Note:

- Work may be delayed, rescheduled, or extended due to weather conditions or unforeseen circumstances.
- Visit [metrolinx.com/OntarioLineConstruction](https://www.metrolinx.com/OntarioLineConstruction) for more information on work happening in your community.

### Contact us:

Call us 24/7 at: [416-202-5100](tel:416-202-5100)

Write to us at:

[ontarioline@metrolinx.com](mailto:ontarioline@metrolinx.com)

Find us on X, Facebook, and Instagram:

[@ontarioline](https://www.instagram.com/ontarioline)

Visit the website:

[www.metrolinx.com/ontarioline](https://www.metrolinx.com/ontarioline)

### Visit our community offices:

**770 Queen Street East (near Queen & Broadview)**

General hours:

Mondays, Tuesdays, and Fridays: 9:00 a.m. to 5:00 p.m.

Wednesday: 1:00 p.m. to 6:00 p.m.

Thursday: 10:00 a.m. to 6:00 p.m.

### Thorncliffe Park:

East York Town Centre

45 Overlea Blvd., Toronto, ON M4H 1C3

Unit 153 (across from the Rogers store)

General hours:

Monday - Friday, 9 a.m. - 5 p.m.

Disponible en français sur demande. Si vous êtes intéressé, veuillez envoyer un courriel à [OntarioLine@metrolinx.com](mailto:OntarioLine@metrolinx.com)