

Ontario Line

Exhibition

Construction Liaison Committee

April 9, 2025



Agenda

Welcome

- Land Acknowledgement

Presentation

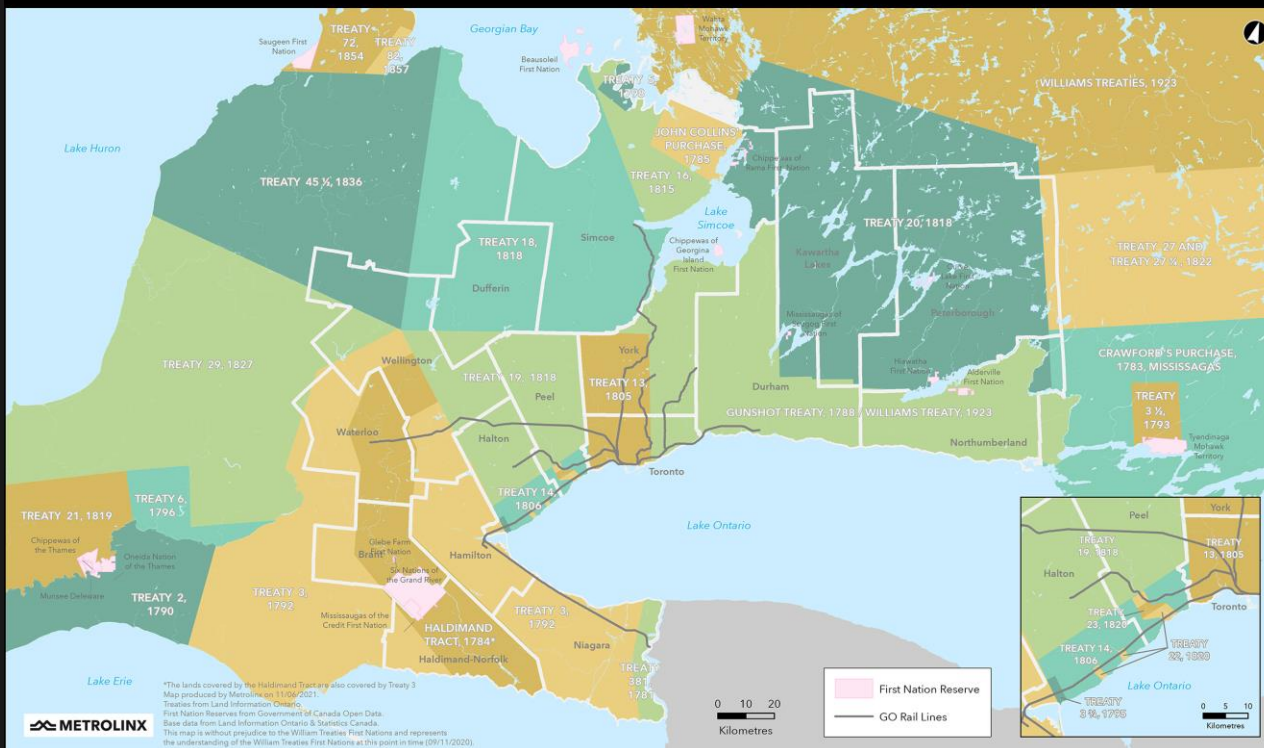
- Action Items (5 minutes)
- Construction Update (30 minutes)
- Look Ahead (25 minutes)
- Discussion (30 minutes)

Q/A and Discussion



LAND ACKNOWLEDGMENT

Treaties and Reserves in the Greater Golden Horseshoe



Metrolinx acknowledges that we connect communities by building and operating transit within the traditional lands of the Anishinaabe, the Haudenosaunee and the Huron-Wendat peoples, for whom these lands continue to have great importance.

Treaties between First Nations and governments cover these lands, and the promises contained in these Treaties remain relevant to this day.

Metrolinx and its employees are committed to understanding the history of these lands and the continued impacts of colonization and take responsibility for actions to advance reconciliation.

Metrolinx will continue to seek the knowledge, expertise and experience of Indigenous partners and commits to doing business in a manner that is built on a foundation of trust, respect, and collaboration.

CLC ACTION ITEMS

#	ACTION ITEM	RESPONSE	STATUS
1	Step-Up Substation (SUSS) plan	Metrolinx to provide a larger SUSS plan to the March (April) 2025 CLC meeting, illustrating scope and scale.	In Progress
2	Liberty Village Business Improvement Association (LVBIA) artwork at Exhibition	<p>LVBIA inquired into the availability and feasibility of including artwork and wayfinding within the existing Exhibition Station tunnel, as means to guide customers and promote local business in the face of construction.</p> <p>Metrolinx is working with the BIA to provide space for community engagement and promotion for the LVBIA, amongst the Ontario Line hoarding on Atlantic Avenue. Discussions continue with Metrolinx to examine opportunities to utilize the hoarding for LVBIA promotion.</p>	In Progress

Ontario Line

Exhibition: Construction Update



WHAT'S HAPPENING AT EXHIBITION?

Crews continue to work on major projects within the Exhibition site to deliver the Ontario Line and new transit hub, including:

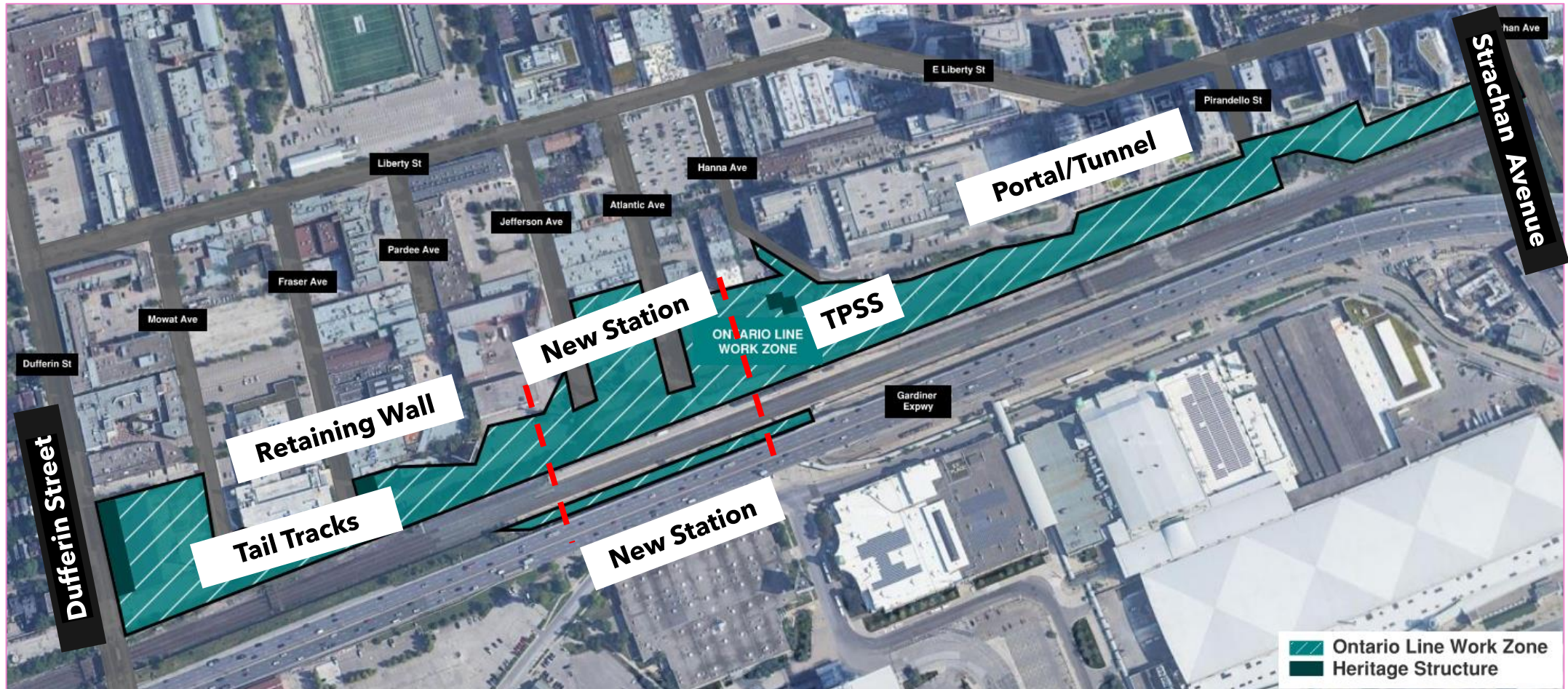
1. Ongoing construction and excavation of the future portal site, east of the existing GO Station entrance.
2. Construction of an all-new station building to the west of the existing entrance on Atlantic Avenue, north of the existing GO tracks.
3. Foundational supports in the rail corridor, to enable future build of shared Ontario Line & GO train platforms, shifting the existing tracks, and a new concourse.
4. Movement of utilities, to facilitate future station buildings, tracks and other infrastructure.



Capping beam work at the portal excavation area, ensuring horizontal stability to the top of below ground support beams.

ONTARIO LINE WORK ZONES

The linear construction work zones are currently **parallel to the GO train tracks** and **within the railway corridor**.



NORTH STATION ENTRANCE BUILDING PILING & EXCAVATION

- **Initial grading, utilities and piling works are complete.**
- Additional excavation and the installation of steel struts (structural support beams) now underway. Utilities works are ongoing throughout the area to support the future station build.
- Installation of a tower crane is anticipated at the site in spring 2025, to support excavation.



Support piles being installed to support the future north main entrance building.



Artist's rendering – subject to change. Transit-Oriented Community proposals not shown.

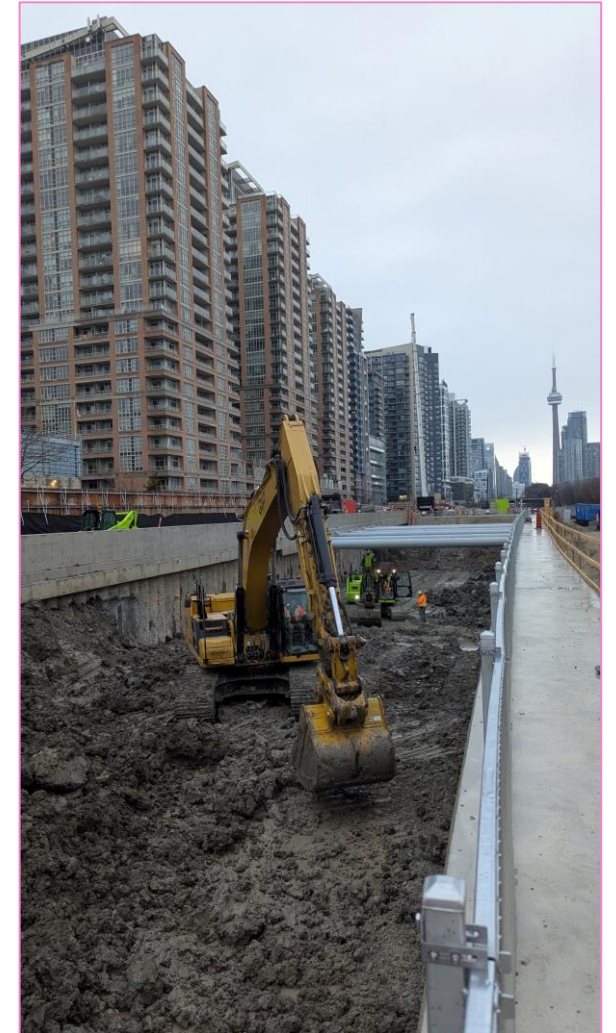
ONTARIO LINE PORTAL EXCAVATION

- **The Ontario Line portal is being constructed at the east end of the Exhibition work site.**
- Once complete, it will act as the entrance to the Ontario Line tunnels, for both tunnel boring machines, and eventually, subway trains.
- Steel trusses have been added, spanning the portal for additional support.



Ontario Line portal walls and struts, ensuring structural integrity as crews excavate.

ONTARIO LINE PORTAL



TRACTION POWER SUBSTATION (TPSS)

What is it?

- A Traction Power Substation (TPSS) is an electrical facility that converts high-voltage electricity from the utility grid to power electric Ontario Line trains, ensuring a reliable and efficient power supply for railway systems.

What is happening?

- Grading, excavation and piling works are occurring to support the future TPSS.
- Once constructed and complete, it will exist below-grade, out of view, under the Ontario Line infrastructure.



TPSS work underneath the pedestrian bridge at existing Exhibition Station.

NEW PLATFORM WORKS

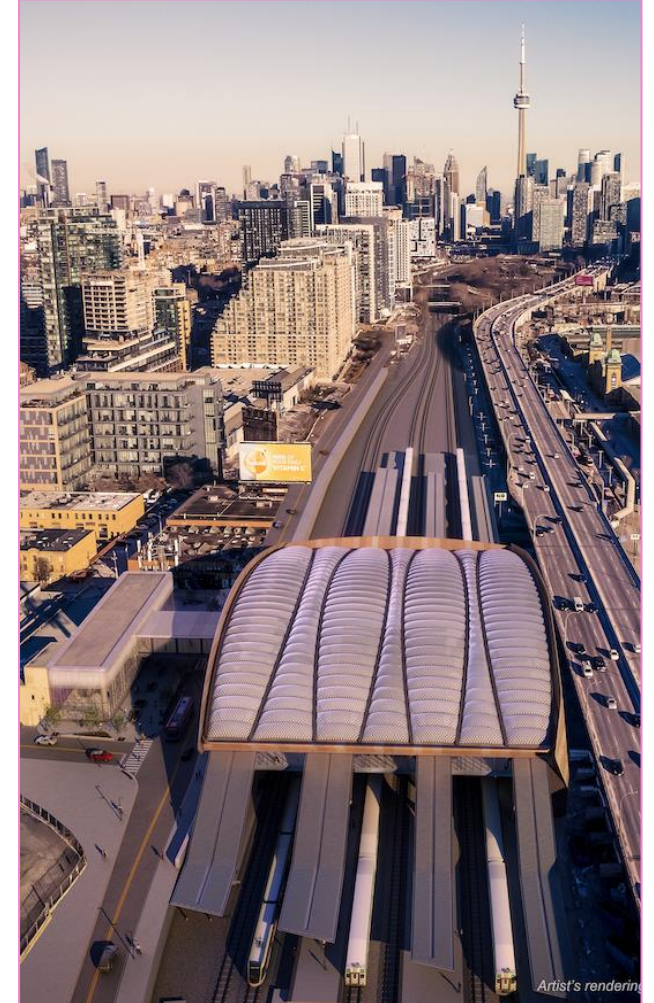
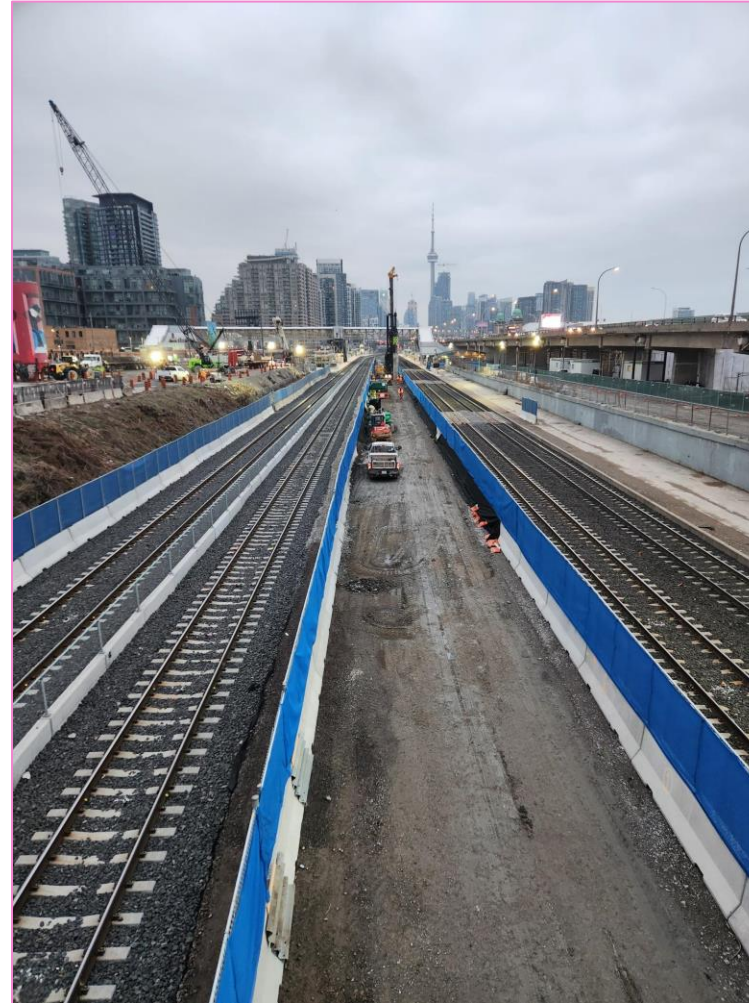
Construction is underway to create the **new station foundations and shared passenger platforms**, at Exhibition station.

Four new shared platforms will be built, from the north to south:

- 1 new Ontario Line subway platform
- 1 shared platform for GO Transit and Ontario Line subway
- 2 new dedicated platforms for GO Transit

Construction Activities:

- Excavation and site preparation
- Permanent foundations drilling
- Caisson installation

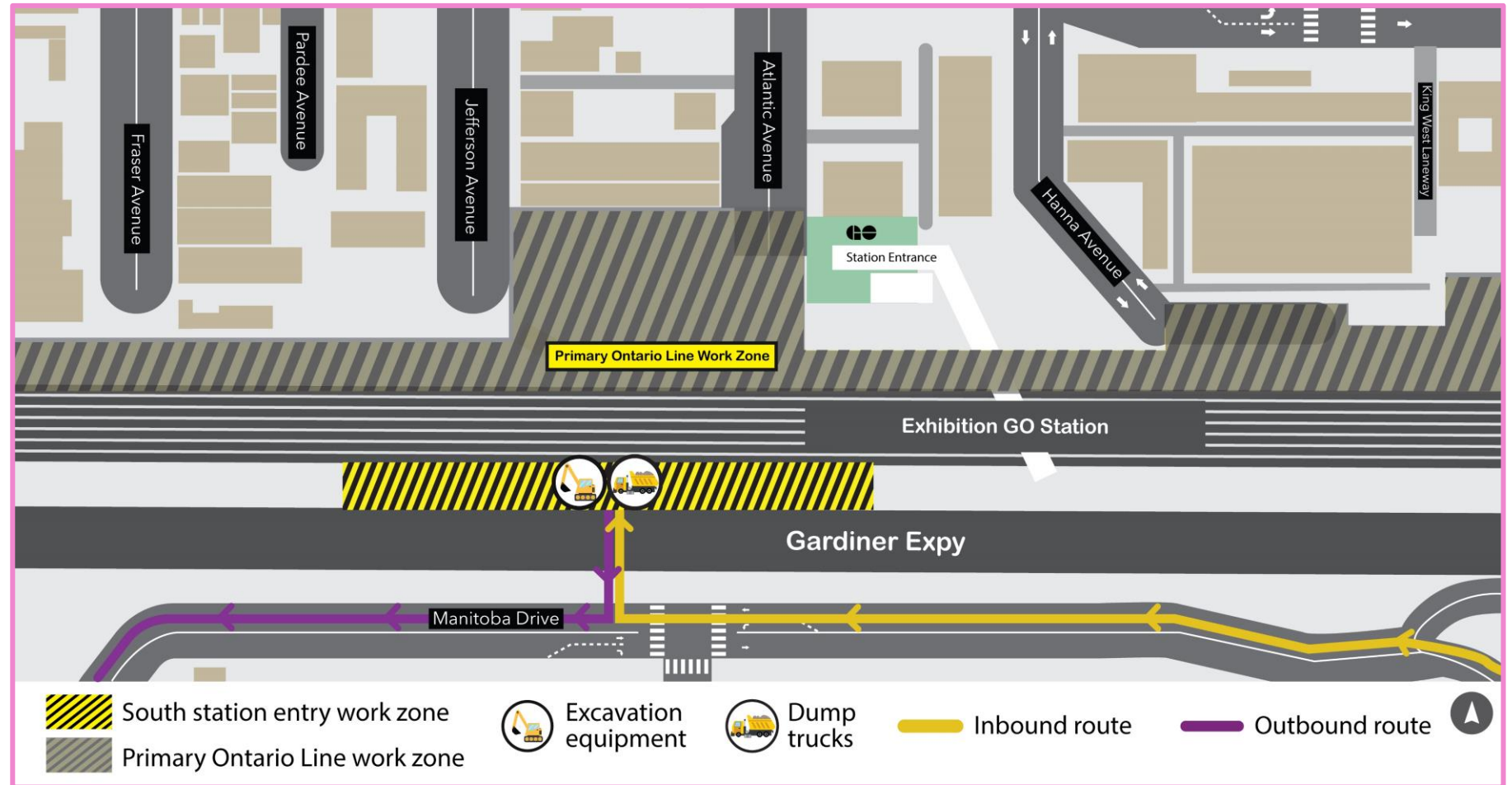


Platform foundation, grading and foundational early works at Exhibition Station.

EXHIBITION SOUTH MAIN ENTRY WORKS

To accommodate the future Ontario Line subway and expanded Exhibition Station, crews will demolish an existing retaining wall, south of the GO Lakeshore West rail corridor.

- Additional foundational and grading works are planned as part of the next phase of construction.



STEP-UP SUBSTATION (SUSS)

What is it?

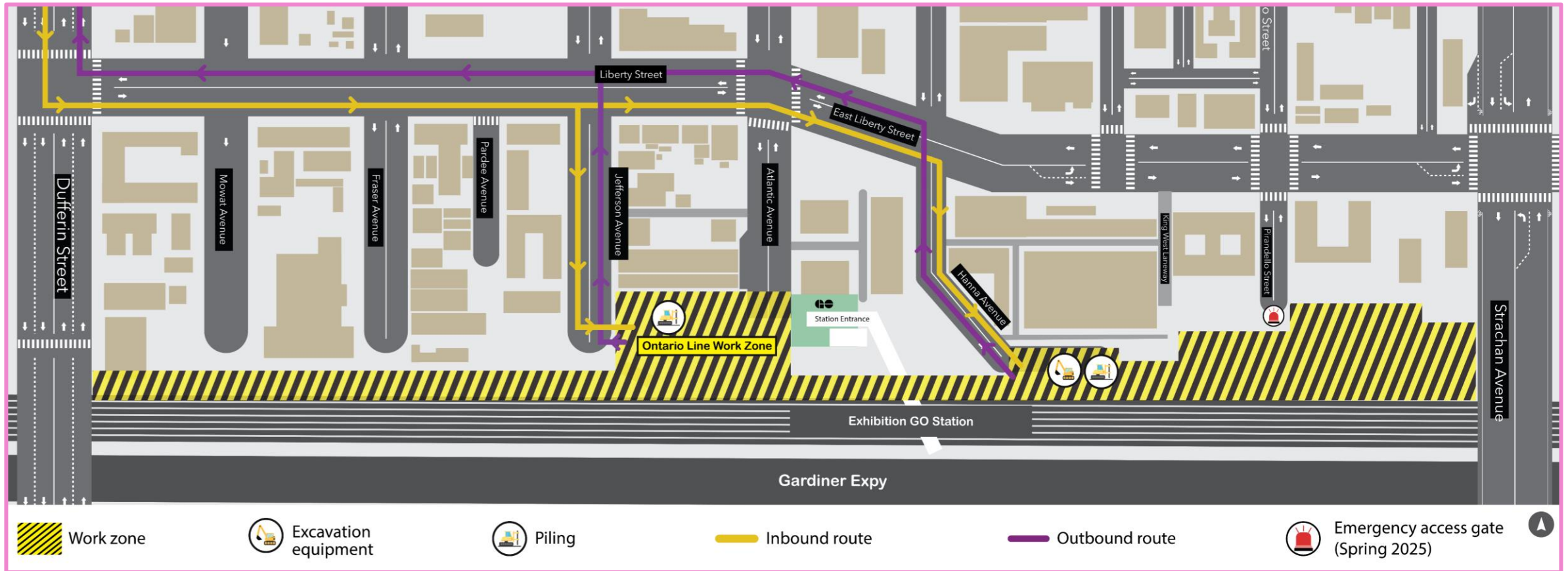
- The SUSS provides electrical power to the traction power system, which feeds the future Ontario Line's electric-powered trains.

What's upcoming?

- Site preparation and the start of construction.

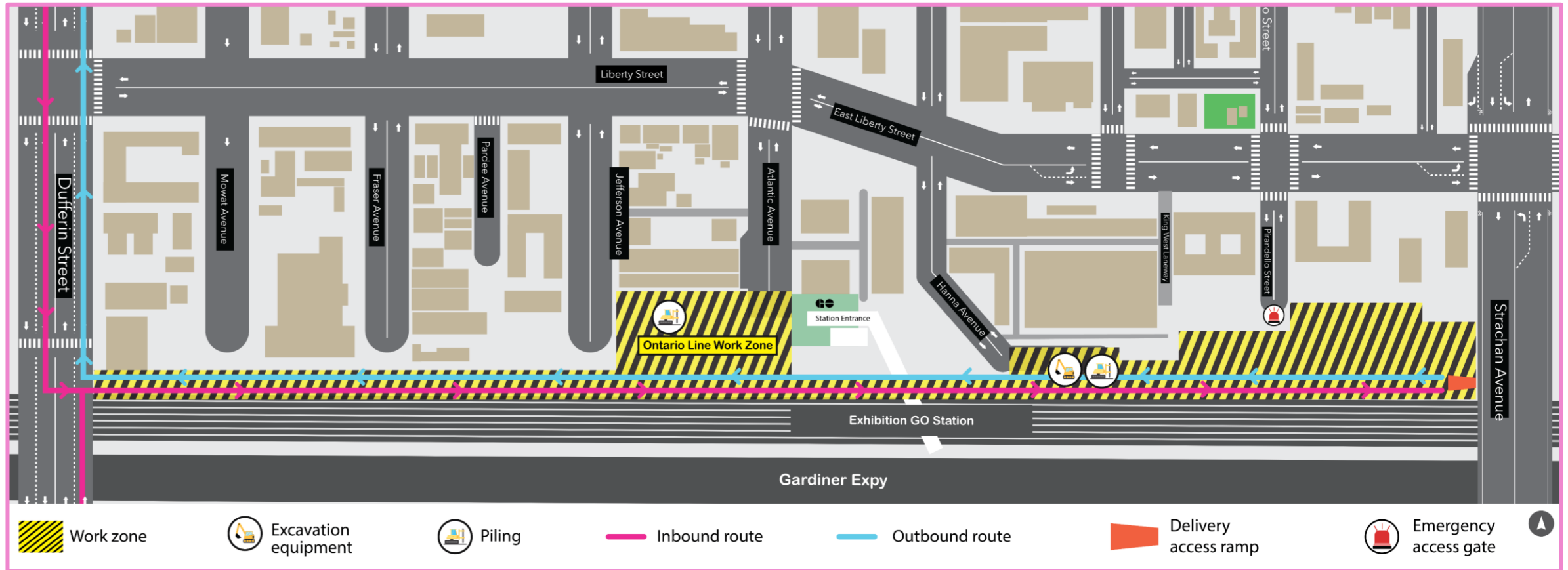


CURRENT TRUCK ROUTE PLAN



This layout represents the key inbound and outbound traffic routes, supporting excavation and other site works. Metrolinx is continuing to work with the City of Toronto and the community on long-term traffic planning; routes are subject to change at any time.

FUTURE TRUCK ROUTE PLAN



This layout represents the key inbound and outbound traffic routes, supporting excavation and other site works. Metrolinx is continuing to work with the City of Toronto and the community on long-term traffic planning; routes are subject to change at any time. Dufferin Street from the south (using the bridge) will be the primary inbound route, pending assessment of the bridge condition.

FUTURE TRUCK ROUTE NOTES

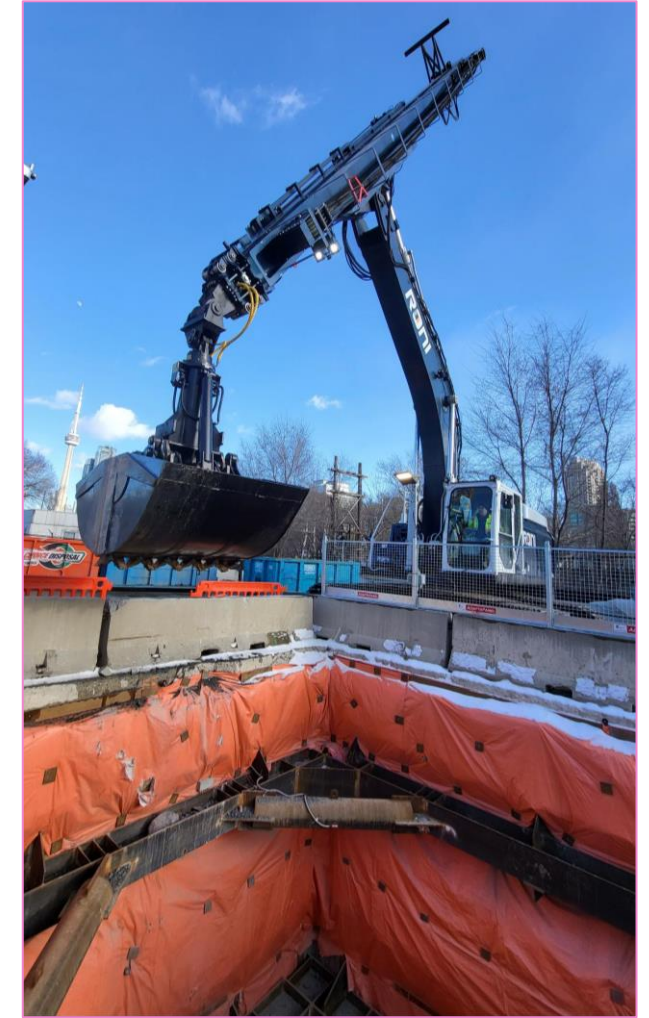
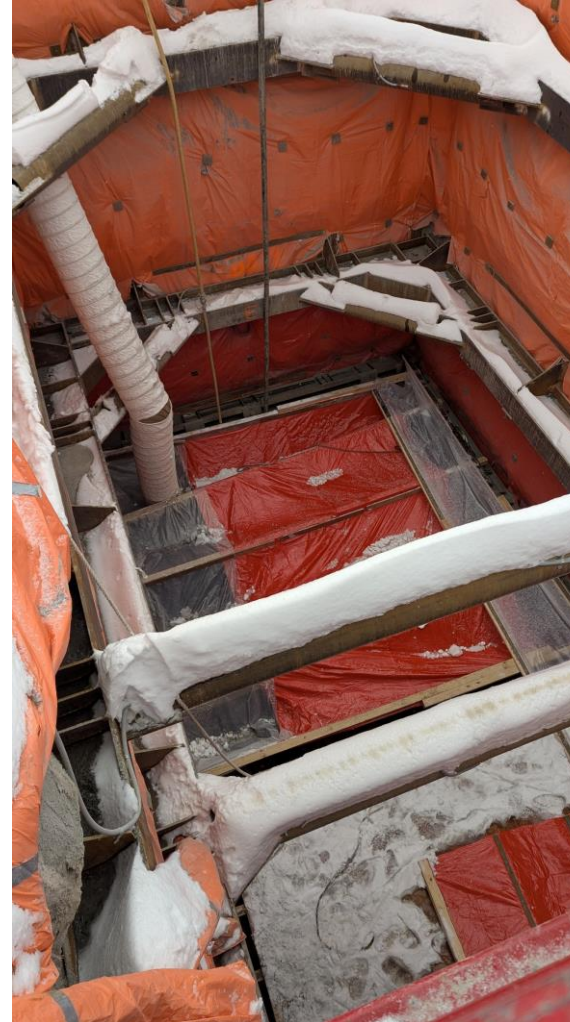
- **Traffic management plans** are being updated to reflect **Dufferin in and out** hauling.
- Enabling the **haul route** within the construction site started by removing the silos, changes to the site logistics, proposals to extend the hoarding out next to the portal and designing the haul route.
- **Dufferin bridge** assessment is ongoing
 - Stage 1 - Visual inspection, comparative live load analysis and a desktop fatigue assessment (This is under review by CoT).
 - Stage 2 - Ultimate limit state (ULS) capacity assessment, structural steel fatigue inspection with NDT and structural steel fatigue evaluation.
- **Strachan temporary construction (secondary) access** proposal has been revised and the design alongside a structural assessment report of the bridge have been shared with CoT for review
- **Pirandello temporary construction access** will be used for a small number of maintenance vehicles starting from May 12th
- At the intersection of **King/Dufferin, TTC works** are planned in early fall 2025. Metrolinx is coordinating with the City of Toronto to use alternative routes during the closure of the intersection.
- Pedestrian and other **road users' safety** along the haul routes for the Exhibition Station continues to be prioritized. Plans are being finalized with the City of Toronto and the contractors to ensure ongoing and long-term safety adherence.
- Metrolinx and the City of Toronto are developing a comprehensive **Heavy Truck Safety Plan** which will include guidelines for haul routes, monitoring, compliance and outreach plans. Updated routes will be shared with the City and other stakeholders as construction stages evolve.

ORDNANCE PARK EMERGENCY EXIT BUILDING PROGRESS

East of Liberty Village, ongoing **excavation work is underway at Ordinance Triangle Park**, for the future Ontario Line emergency exit building (EEB) to be constructed.

What is happening?

- Crews are removing soil and rock, using a special excavator called a teledipper.
- Along the excavated shaft, shotcrete is being added for extra structural support.
- This work will result in an emergency exit stairwell connecting to the future tunnels.



The excavated shaft at which will lead to an integrated emergency exit building in the park.

EXHIBITION EIGHT WEEK LOOKAHEAD: APRIL-MAY 2025

#	Activity	Location	Expected Start	Expected Duration	Impact	Hours of Work	Mitigations
1	THESL relocation work	Vicinity of rail corridor	On-going	Wrapping up mid-April	Coordination with GO transit. No public impact.		
2	Construct Crane Pad	North entrance	March 2025	One month	Grading equipment and concrete trucks accessing the site	Mon-Fri 7am-7pm	Public notice, dust control and street sweeping
3	Install Tower Crane	North entrance	End of April/beg May	One week	Short term traffic impact during delivery. Flag personnel on site.	Mon-Fri 7am-7pm	Flag personnel on site.

EXHIBITION EIGHT WEEK LOOKAHEAD: APRIL-MAY 2025

#	Activity	Location	Expected Start	Expected Duration	Impact	Hours of Work	Mitigations
4	Temporary SOE and three meters excavation and caissons foundations	North main entrance	On-going	Throughout period of lookahead	Noise and dust	Monday to Saturday 7am-7pm	Hoarding and fencing, street cleaning, dust control
5	Temporary SOE	Traction Power Substation	On-going	Throughout period of lookahead	Noise and dust	Monday to Saturday 7am-7pm *7am-11pm for two weeks to prepare crane pad	Hoarding and fencing, street cleaning, dust control
6	South headhouse retaining wall demolition, working platform	South headhouse	April	Throughout period of lookahead	Truck access from Exhibition Place	7am-5pm and 11pm-5am	Coordination with Exhibition Place, flaggers present

EXHIBITION EIGHT WEEK LOOKAHEAD: APRIL-MAY 2025

#	Activity	Location	Expected Start	Expected Duration	Impact	Hours of Work	Mitigations
7	Temporary Support of Excavation	North Platform, GO rail corridor	March 2025	Period of lookahead	Noise in the rail corridor, truck access	Monday to Saturday 7am-7pm	Coordination with GO transit
8	Island platform pile caps, staircase to tunnel, elevator pits, CIP girders	Island Platform, GO rail corridor	Expected start April	Period of lookahead	Noise in the rail corridor, truck access	Monday to Saturday 7am-7pm	Coordination with GO transit
9	Portal excavation; soft soil, walers and struts	Hanna gate to east end TPS parking lot (hoarded work zone)	Ongoing	Entire duration of lookahead	Noise and dust	Monday to Saturday 7am-7pm	Hoarding and fencing, street cleaning, dust control
10	Portal excavation rock-breaking, walers and struts	Hanna gate to east end TPS parking lot (hoarded work zone)	April	Entire duration of lookahead	Noise and dust	Monday to Saturday 7am-7pm	Hoarding and fencing, street cleaning, dust control

KEEPING YOU INFORMED

Metrolinx will keep the community, residents and businesses informed by providing project updates, seeking input and feedback, while addressing questions and concerns effectively and quickly.

Next meeting: Anticipated June 2025 - date to be announced

Connect with us:

Email: OntarioLine@metrolinx.com
Telephone 24/7 @ 416-202-5100

Follow us on social media:

X / Facebook / Instagram: @OntarioLine



*Scan here to sign up
for the Ontario Line
e-newsletter*



*Scan here to explore
Ontario Line CLC
documents*



Artist's rendering – subject to change. Transit-Oriented Community proposals not shown.

