

GO Expansion

Welcome to the Lakeshore West  
Open House

# Burloak Grade Separation Project



\* Artist's rendering. Concept is subject to change.



# Land Acknowledgement

Metrolinx acknowledges that we connect communities by building and operating transit within the traditional lands of the Anishinaabe, the Haudenosaunee and the Huron-Wendat peoples, for whom these lands continue to have great importance.

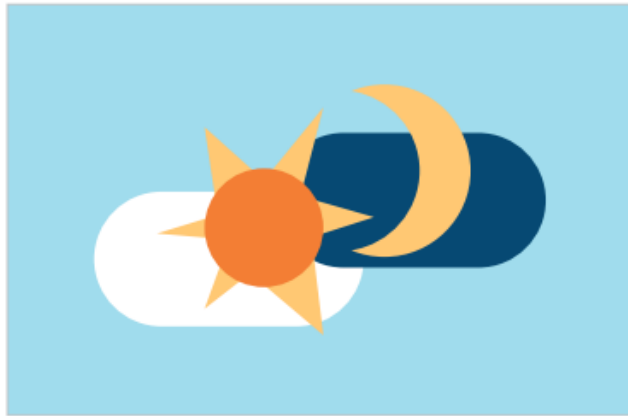
Treaties between First Nations and governments cover these lands, and the promises contained in these Treaties remain relevant to this day.

Metrolinx and its employees are committed to understanding the history of these lands and the continued impacts of colonization and take responsibility for actions to advance reconciliation.

Metrolinx will continue to seek the knowledge, expertise and experience of Indigenous partners and commits to doing business in a manner that is built on a foundation of trust, respect, and collaboration.



# The GO Expansion program will provide a range of improvements across the Greater Golden Horseshoe Area:



More all-day service



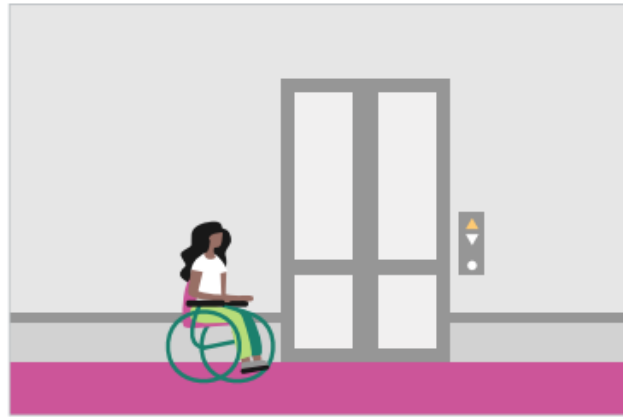
Service in both directions



Capacity for trains every 15 minutes or better



Faster and more efficient fleet



More accessible stations



An expanded Union Station



# Burloak Drive - Grade Separation

Currently, Burloak Drive crosses the Lakeshore West rail line at street level, causing delays as traffic must stop for passing trains.

BEFORE



AFTER



\* Artist's rendering. Concept is subject to change.

With our partners, the City of Burlington and the Town of Oakville, we are constructing a new underpass to separate the road from the rail line, allowing vehicles to pass underneath without stopping.



# Key Benefits

- Supports increased GO service levels on the Lakeshore West line
- Traffic flow optimization, increased pedestrian and vehicle safety
- Possibility for a future 6-lane road\*
- Intersection and roadway widening at Superior Court and Prince William Drive, as well as minor improvements at Harvester and Wyecroft Roads
- Dedicated multi-use pathways along the boulevard and on-street bicycle lanes



\* Artist's rendering. Concept is subject to change.



\* Artist's rendering. Concept is subject to change.



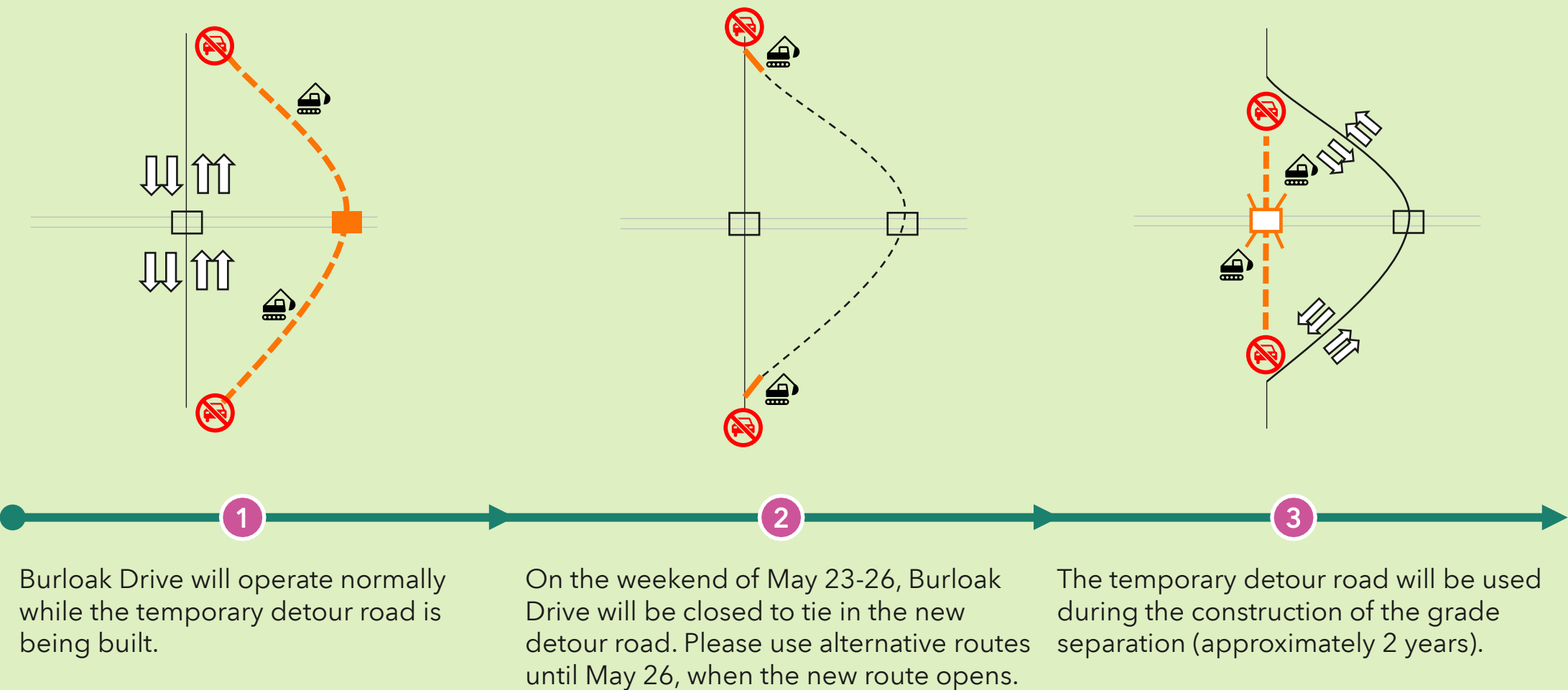
# Benefits of Detour Road Construction



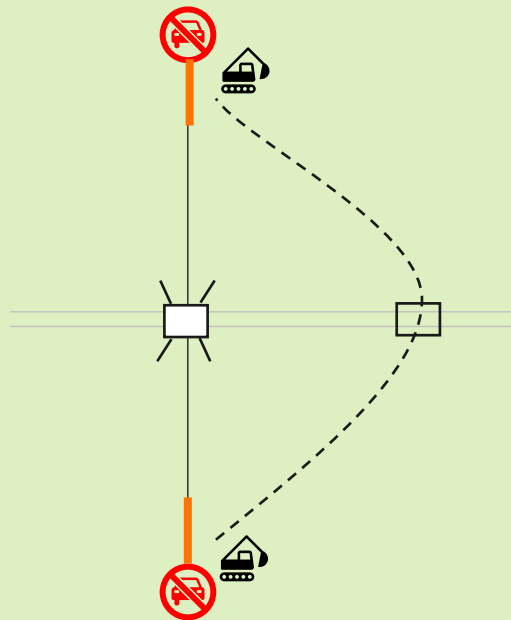
A new 4-lane temporary road will be built along the east side of the existing Burloak Drive:

- A multi-use pathway will be on the north-east side of the detour road.
- There are no expected impacts to property access/egress. Should this change during construction, we will inform the community in advance. Bus routes will not be affected.
- The detour road will be used while we build the grade separation - for approximately 2 years.

# Construction Stages / Timeline

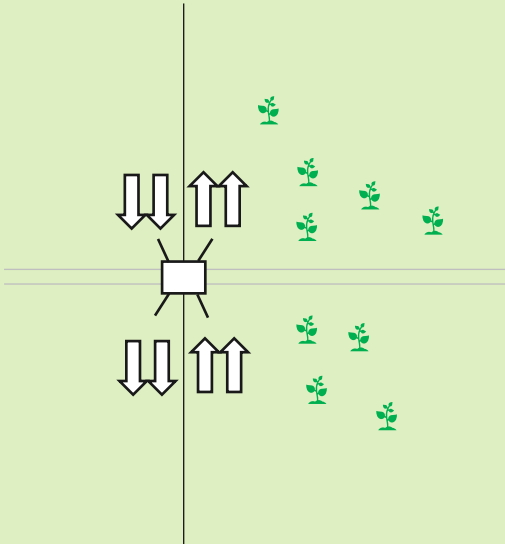


# Construction Stages / Timeline (cont.)



4

A future closure of Burloak Drive is required to reintegrate it back into the road network. The duration and timing of this closure will be communicated in advance.



5

Following construction, vehicles will resume use of Burloak Drive with a new grade separation. The detour road will be closed and land restored.



# Being a Good Neighbour



## Noise and Vibration

•



## Dust and Mud

We will use wheel washers and street sweepers to keep mud off local roads. We will dampen excavated material to reduce dust in the hot and dry summer months.



## Construction Traffic

We will avoid using residential streets as much as possible during the construction of the grade separation.



## Site Lighting

We will try to make sure our lighting doesn't affect nearby properties, by directing the glare away from local homes and businesses.



## Pedestrian and Cycling Impacts

A pedestrian sidewalk and cycle route will be built alongside the new temporary road so that these routes can be used while Burloak Drive is closed for the construction.

# Contact Us

## Mandeep Jassal

Community Engagement Advisor, Metrolinx  
Mandeep.Jassal@metrolinx.com

## Jonathan Ribeiro Marulanda

Senior Manager, Community Engagement,  
Metrolinx  
Jonathan.RibeiroMarulanda@metrolinx.com



@GOExpansion



(416)-202-4738



<https://www.metrolinx.com/burloak>



HaltonRegion@metrolinx.com



