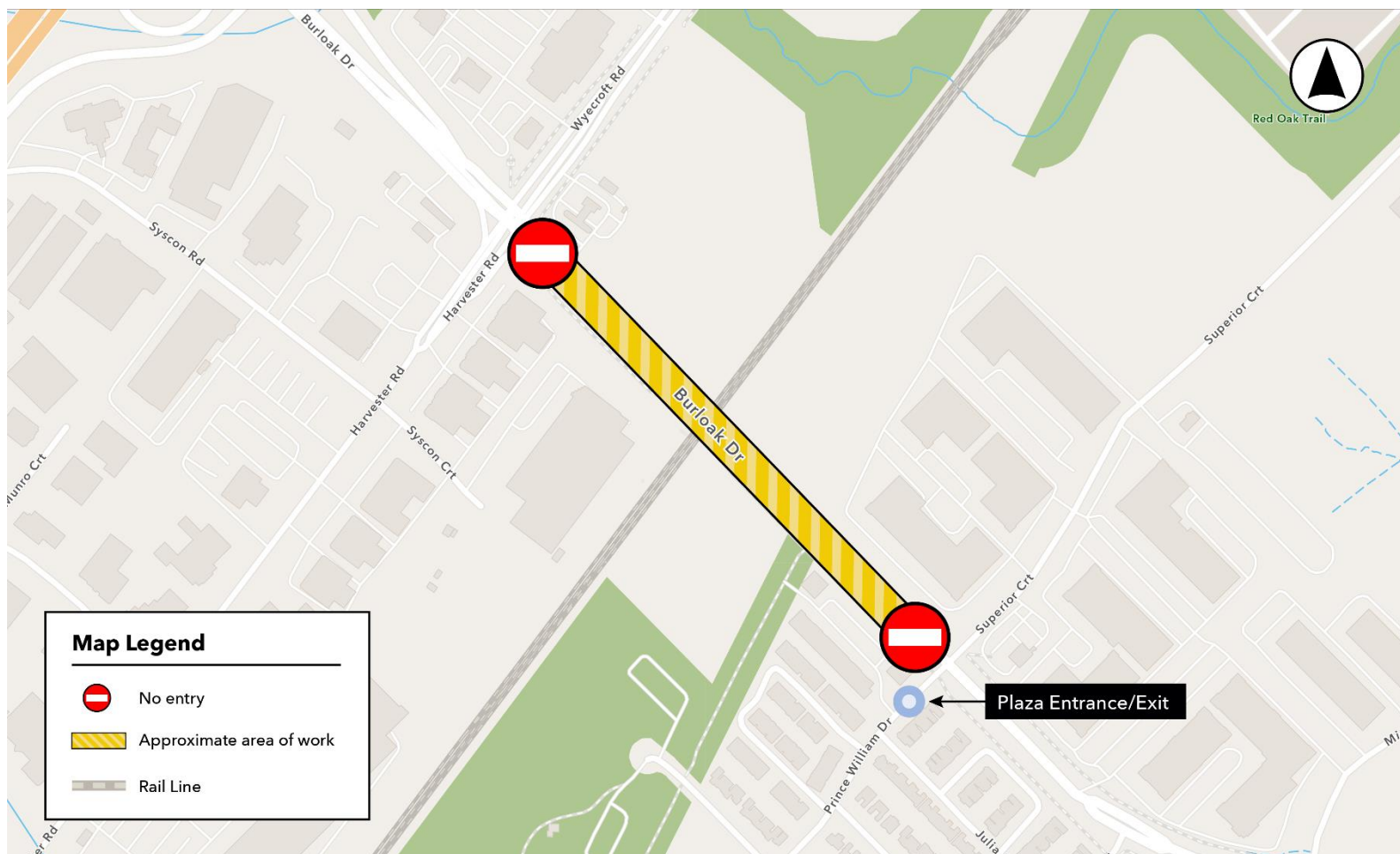


# Burloak Grade Separation: Full Weekend Road Closure

May 23-26, 2025



*Plan showing the extent of the road closure.*

## WHAT TO EXPECT

Over the weekend of May 23 to 26, 2025, Burloak Drive will be closed to all traffic (including pedestrians and cyclists) from the Prince William Drive and Superior Court intersection to the Harvester and Wyecroft Roads intersection, as shown on the plan above.

The road will be closed from 8:00pm on Friday, May 23 and will reopen again at 6:00am on Monday, May 26. Please use alternative routes during this time.

Access to the shopping plaza at 700-728 Burloak Drive will be maintained from Prince William Drive at all times.

## WHY ARE WE TEMPORARILY CLOSING BURLOAK DRIVE?

We have built a temporary detour road alongside Burloak Drive, allowing traffic to use the route while we build the new underpass (see [www.metrolinx.com/burloak](http://www.metrolinx.com/burloak) for more information).

We need to close the road completely to connect this new detour road to Burloak Drive, where it will be in place for approximately two years.

We must pave the area between the existing road and the new detour road and paint road markings, to ensure that it is safe and up to standard prior to opening.

We recommend using Bronte Road or Appleby Line for the duration of the closure. Please follow the detour signage. The road will also be closed to pedestrians and cyclists.

## WHAT TO EXPECT

Residents and businesses may experience some traffic disruption, noise, dust, and vibration from the construction.

Contractors will take reasonable precautions to minimize disturbances to residents and businesses including but not limited to the following:

- Ongoing monitoring for noise and dust
- Regular sweeping of streets
- Mud mats at site exit points to control and prevent dirt from leaving the site
- Detour routes outlined during closures with required signage

- Limiting construction traffic and no parking on public streets

## WORKING HOURS

We will be working for the entire duration of the closure, both during the day and overnight.

## BUS DETOURS

Local bus routes will be diverted for the duration of the closure. Please visit <http://www.oakvilletransit.ca> and <http://www.burlingtontransit.ca>, for more information on local bus detours.

## LAKESHORE WEST RAIL SERVICE CHANGES (SATURDAY AND SUNDAY, MAY 24-25)

- GO buses will replace trains between Oakville and Aldershot GO.
- GO trains will run between Union Station and Oakville GO and between Aldershot and Niagara Falls GO.
- Train schedules will be adjusted.
- There will be some late-night train adjustments on Friday, May 23.

Please check the schedules before you travel. Further information can be found at:

[www.gotransit.com](http://www.gotransit.com)

## COMMUNITY ENGAGEMENT

Metrolinx has a dedicated community engagement team in place who works with residents and businesses in Halton Region.

If you have any questions about anything in this notice, please contact the team using the details below.

Information as of: April 28, 2025

This notice can be translated into a different language upon request by emailing us at: [haltonregion@metrolinx.com](mailto:haltonregion@metrolinx.com)

Veuillez trouver l'avis de construction en français ici : [www.metrolinx.com/lakeshorewest-docs-fr](http://www.metrolinx.com/lakeshorewest-docs-fr)

### Contact Us:

- ✉ Write to us at: [haltonregion@metrolinx.com](mailto:haltonregion@metrolinx.com)
- ✂ Find us on Twitter [@GOExpansion](https://twitter.com/GOExpansion)
- 🌐 Visit the website: [www.metrolinx.com/lakeshorewest](http://www.metrolinx.com/lakeshorewest)
- 🌐 Subscribe to our e-blast: [www.metrolinx.com/subscribe](http://www.metrolinx.com/subscribe)