

Ontario Line

Thorncliffe Park

Construction Liaison Committee

April 24, 2025

LAND ACKNOWLEDGEMENT

Metrolinx acknowledges that we connect communities by building and operating transit within the traditional lands of the Anishinaabe, the Haudenosaunee and the Huron-Wendat peoples, for whom these lands continue to have great importance.

Treaties between First Nations and governments cover these lands, and the promises contained in these Treaties remain relevant to this day.

Metrolinx and its employees are committed to understanding the history of these lands and the continued impacts of colonization and take responsibility for actions to advance reconciliation.

Metrolinx will continue to seek the knowledge, expertise and experience of Indigenous partners and commits to doing business in a manner that is built on a foundation of trust, respect, and collaboration.



AGENDA

1. **Welcome** (10 minutes)

- Land Acknowledgement
- Safety Moment
- CLC Expectations

2. **Construction Updates** (20 minutes)

- Advanced Works - Overlea Boulevard
- Don Valley Crossing - Beth Neilson Drive
- Elevated Guideway and Stations - Overlea Boulevard

3. **Community-led Discussion** (20 minutes)

4. **Next Steps** (10 minutes)

Safety Moment: Safety near construction sites

Watch Your Speed – slow down around construction sites to keep yourself, pedestrians, and workers safe.

Follow The Signs – pay attention to construction detours and follow the signs when travelling through a construction area.

Cross Safely – only cross at designated crosswalks and intersections and never cut through a construction site.

Stay Alert – watch out for construction vehicles and equipment when passing through a construction area. Large construction vehicles have blind spots and can't always see you. Keep your distance.



Session Guidelines

We greatly appreciate the community members who are here to take part in this public session.

To ensure that everyone can contribute to a positive and safe community experience, all participants shall adhere to the following *Code of Conduct*:

- Treat the presenters and participants with respect and understanding
- Acknowledge and appreciate the diversity of individuals and their situations
- Refrain from supporting or engaging in any form of discriminatory behaviour

Metrolinx is committed to fostering a safe and respectful environment.

We encourage respectful and constructive communication.

Contact Us

Metrolinx will keep the community, residents and businesses informed by providing project updates, seeking input and feedback, and addressing questions and concerns effectively and quickly.

Stay connected:

Ontario Line e-newsletter @ [Metrolinx.com/OntarioLine](https://www.metrolinx.com/OntarioLine)

Events:

RV Burgess Park Clean-Up: April 25, 2025 from 10 a.m. to 12 p.m.

Next CLC:

Thursday, May 29, 2025

Questions or comments:

OntarioLine@metrolinx.com
24/7 call 416-202-5100

Follow us on social media:

X / Facebook / Instagram @ OntarioLine



Visit Us:

East York Town Centre
45 Overlea Blvd., Toronto, ON M4H 1C3
Unit 153 (across from the Rogers store)
Monday to Friday: 9 a.m. to 5 p.m.

Advanced Works - Overlea Boulevard

What are “Advanced Works”?

Advanced works are done to move infrastructure or other public elements out of the way prior to major construction. They will facilitate construction of the elevated guideway, stations and the maintenance and storage facility (OMSF).

On Overlea Boulevard, this will include utility relocations, tree removals, property demolitions, and road realignment between Millwood Road and Thorncliffe Park Drive.

Advanced Works: December to March Progress



Watermain Valve Installation at Millwood & Overlea in January.



Crews and an excavator working in the linear contiguous Stage 3 work zone along the north side of Overlea Blvd in February.

November - December

- Infrastructure (storm, sewer, watermain) installed along South side Overlea Blvd.
- Paving work to open two lanes of traffic in each direction on Overlea Blvd.

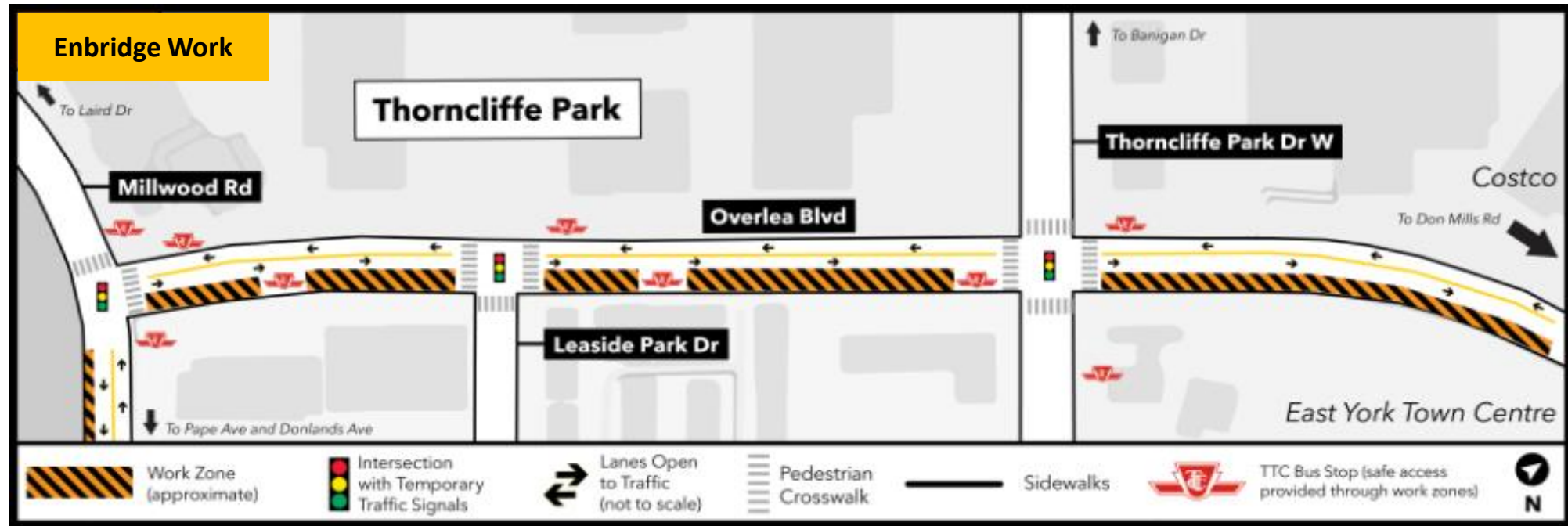
January - February

- South side Overlea Blvd utility relocation continued and shifted to the north where infrastructure was installed and tied into storm, sewer, watermain work, alongside road maintenance.

March

- Critical infrastructure installation took place along the north side of Overlea Blvd.
- Site handed over to Enbridge for utility relocation.

Current Stage of Advanced Works



- From March until August 2025, Enbridge will relocate a gas main between Millwood to Thorncliffe Park Drive East on Overlea Blvd.
- Periodic noise and vibration impacts are expected.



- Traffic staging will be as pictured in the map above. Work is focused on the south side and median of Overlea Blvd.
- Paid Duty Officers (PDOs) to be onsite as needed to assist with traffic movement.
- Periodic restricted left-turns from Millwood Road into Overlea Blvd.

Advanced Works returns in June

- As early as June 2025, GIP will return to Overlea Blvd. to complete the remaining watermain and sewer tie-in works. Water service impacts are expected and will be scheduled overnight.
- This work will be completed utilizing localized traffic control plans to limit the impact to traffic.
- Turns will be allowed in both directions where currently allowed.
- Once the watermain works are completed. GIP will return to Stage 2 to complete boulevard construction, temporary streetlight installation and final paving works.



Action Log

#	Questions Asked / Action Item	Response/Resolution	Due Date / Status
1	EMS access on Overlea Blvd.	<ul style="list-style-type: none">Toronto Fire and EMS continue to be updated when traffic configurations change so they can plan accordingly.Dedicated TTC bus turnouts were implemented into traffic staggering when possible. To significantly reduce the amount of traffic backup and allow for clear passage of emergency vehicles.	Ongoing
2	Investigate dust and dirt mitigation.	<ul style="list-style-type: none">GIP street sweepers circulated through the Advance Works project boundaries periodically (as conditions require and weather permits) and were also on standby on an as-needed basis.	Ongoing
3	Review suggestions for increased signage warning of delays and lane reductions.	<ul style="list-style-type: none">Signage has been added and is being maintained. Maintain existing advance warning signage within and outside project boundaries that advises of expected construction-related delays.GIP conducts periodic patrols/inspections of signs to ensure they remain visible and in good condition.	Completed

Traffic Mitigations implemented after feedback from November CLC

- **Signal timing optimization**

- **GIP's traffic consultants re-analyzed traffic volumes in January 2025 and adjusted signal timing accordingly. The new traffic configuration and signal timing was reviewed and approved by the City, as in previous stages.**
- When possible, dedicated left-turn lanes with advance left-turn signals from eastbound/westbound Overlea Blvd onto Thorncliffe Park Drive W northbound/southbound.
 - Dedicated left and right turn lanes at Overlea Boulevard & Millwood Road intersection.

- **Paid-duty officers (PDOs)**

- PDOs are deployed to assist with traffic flow, guide pedestrians in crossing personnel also assist during active work hours.

- **Advance warning signage**

- Advance warning signage, both within and outside project boundaries, advise of expected construction-related delays and suggest alternate routes circumventing Thorncliffe Park.
 - Periodic patrols/inspections of signs to ensure they remain visible and in good condition.



Crews working on traffic signal heads during Stage 2 at Overlea Blvd at Leaside Park Dr



PDOs guiding traffic as motorists navigate through the intersection of Overlea Blvd and Thorncliffe Park Dr and Leaside during Stage 3



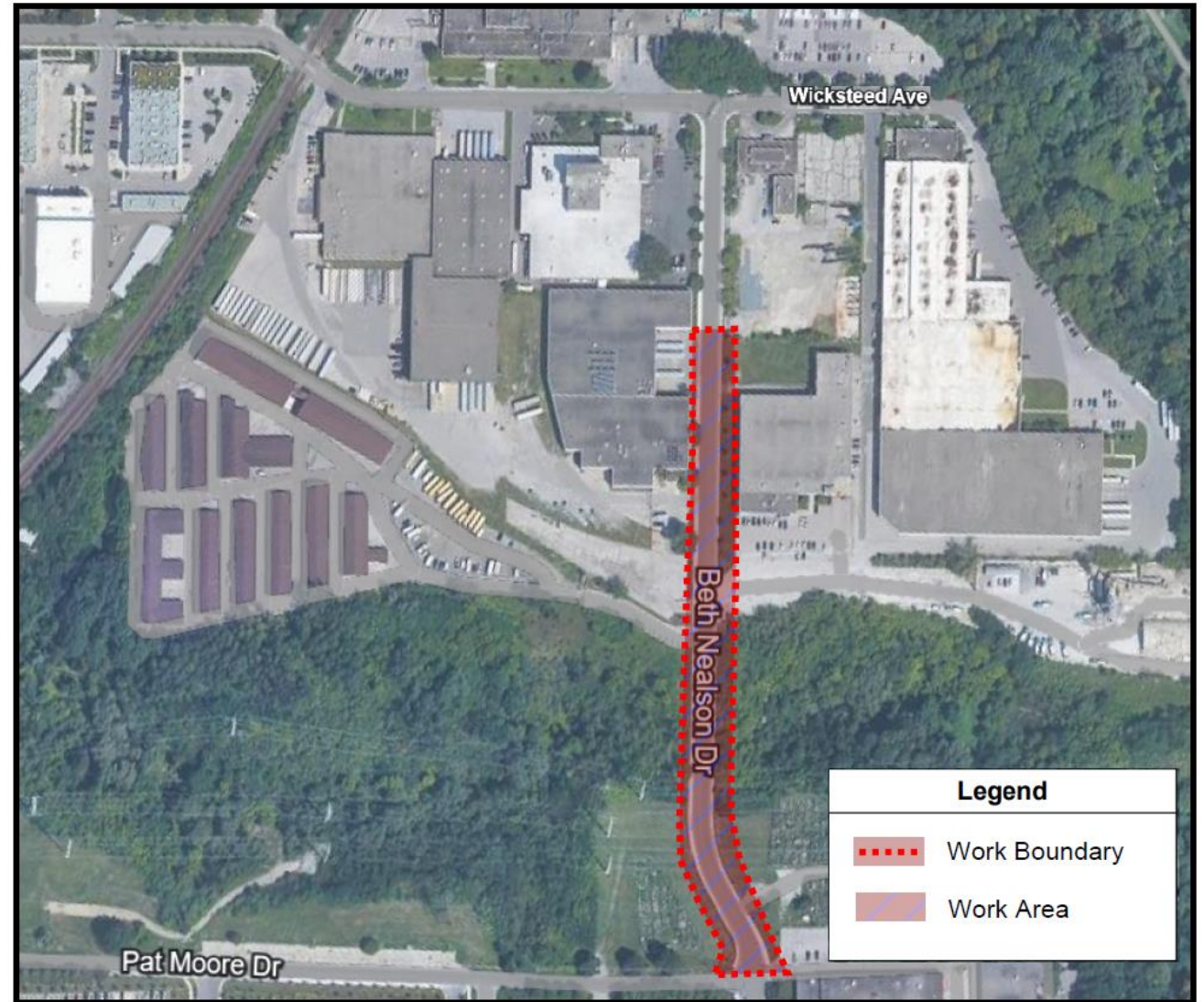
An advance warning sign as seen on westbound Overlea Blvd in Stage 1 of Advance Works

Don Valley Crossings - Beth Nealson

Beth Neilson Underpass and Grade Separation - Scope of Work

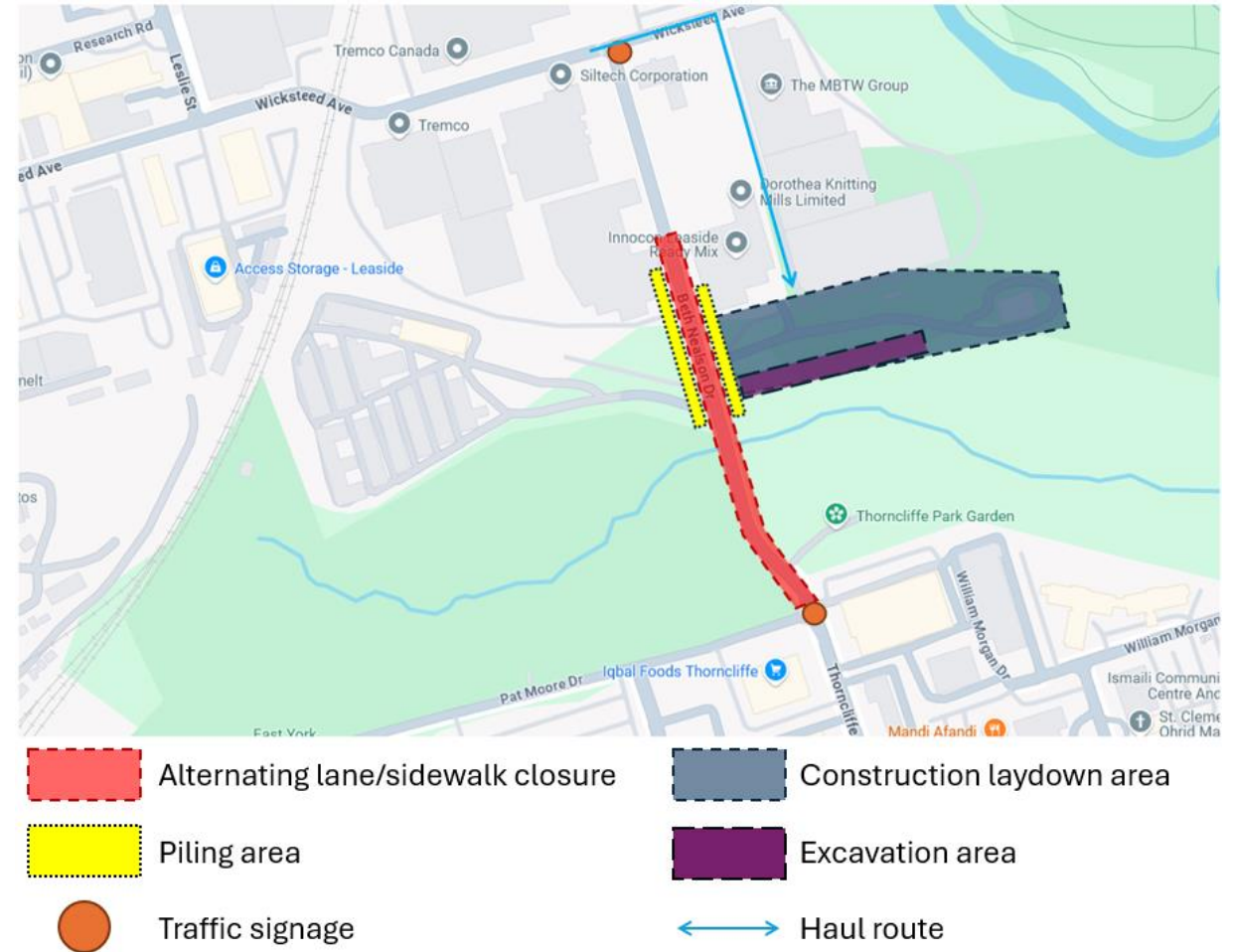
Metrolinx is constructing an underpass on Beth Neilson Drive, where the existing roadway will be depressed to slope down north and south of the Ontario Line tracks, to accommodate a rail over road grade separation. Construction activities for this include:

- Construction of caisson walls on both sides of Beth Neilson Drive.
- Full depth excavation of Beth Neilson Drive to regrade the road.
- Building retaining walls on Beth Neilson Drive to delineate the roadway with sidewalk.
- Decommissioning of existing utilities and installation of new utilities.
- Construction of track retaining wall and an overpass for the new Ontario line track.

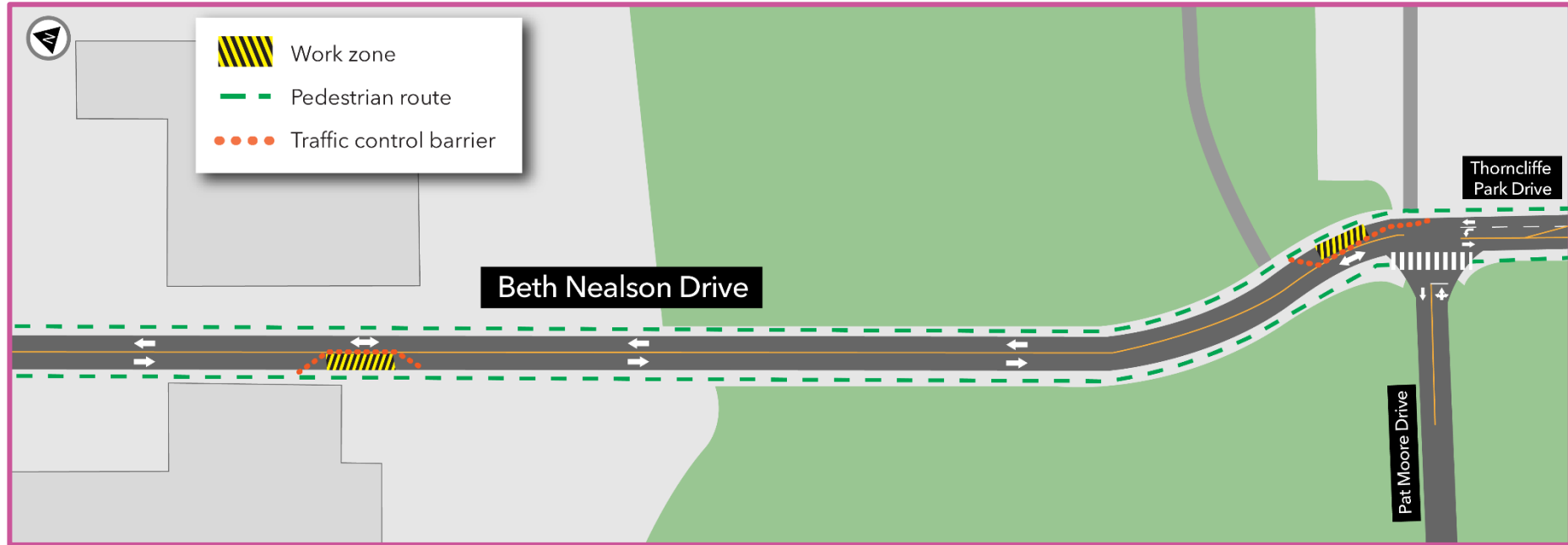


Alternating Lane Closures (May to August 2025)

- From early May, to enable the construction of Caisson walls, alternating single lane closures will be implemented on Beth Neilson Drive from Pat Moore Drive to South of Wicksteed Avenue.
- This will impact commuter traffic, TTC and travel within the immediate area. Delays are expected.
- Increased construction traffic near the construction area.
- Traffic control personnel will be present to direct traffic.



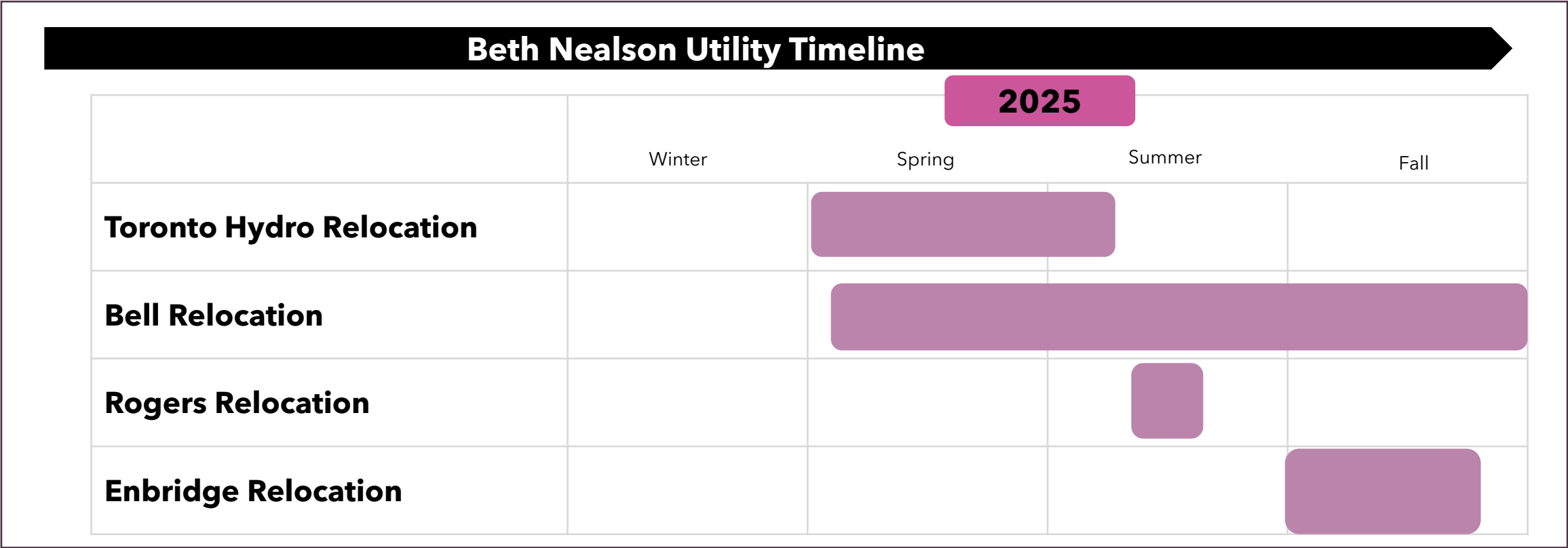
Upcoming Utility Work



This is an example of the traffic control plan for upcoming utility work and is subject to change.

- To accommodate the construction of the Beth Neilson underpass utility infrastructure will be relocated to a depth below the future Beth Neilson Underpass.
- Starting as early as Spring 2025, crews will begin work to relocate utility infrastructure to a location which will be below the future footprint of the Beth Neilson Underpass.
- A single lane of bi-directional traffic will be maintained and facilitated by flaggers.
- Pedestrian access will be maintained
- Excavators, dump trucks, hydrovacs, and a directional drill will be used.

Beth Neilson Utility Work Timeline



* This is a draft plan and is subject to change. A notice will be shared with the community ahead of the start of work.

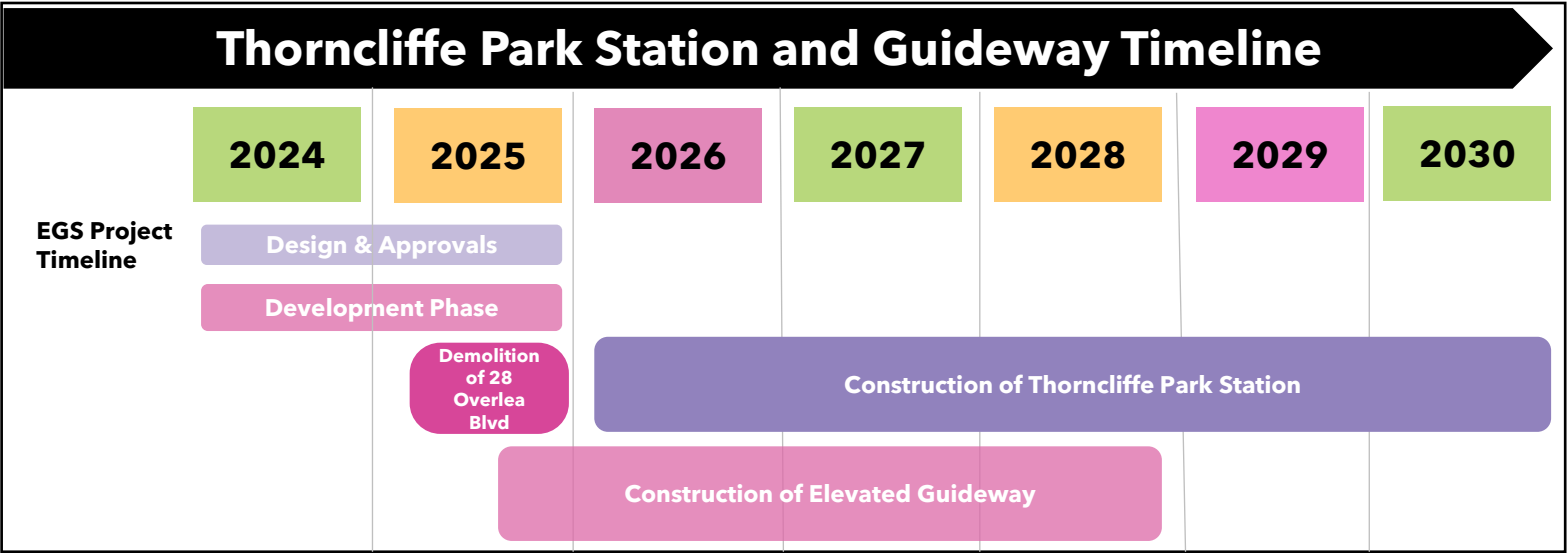
Elevated Guideway and Stations Works - Overlea Boulevard

Thorncliffe Park Station and Guideway Timeline

- Prior to major station construction, the EGS project is in the development phase, which involves advancing design and determining methodology for future construction. During this phase the EGS contractor is undertaking the following preparatory activities:
 - Noise and vibration baseline monitoring
 - Environmental surveys and sampling
 - Demolition of 28 Overlea Boulevard

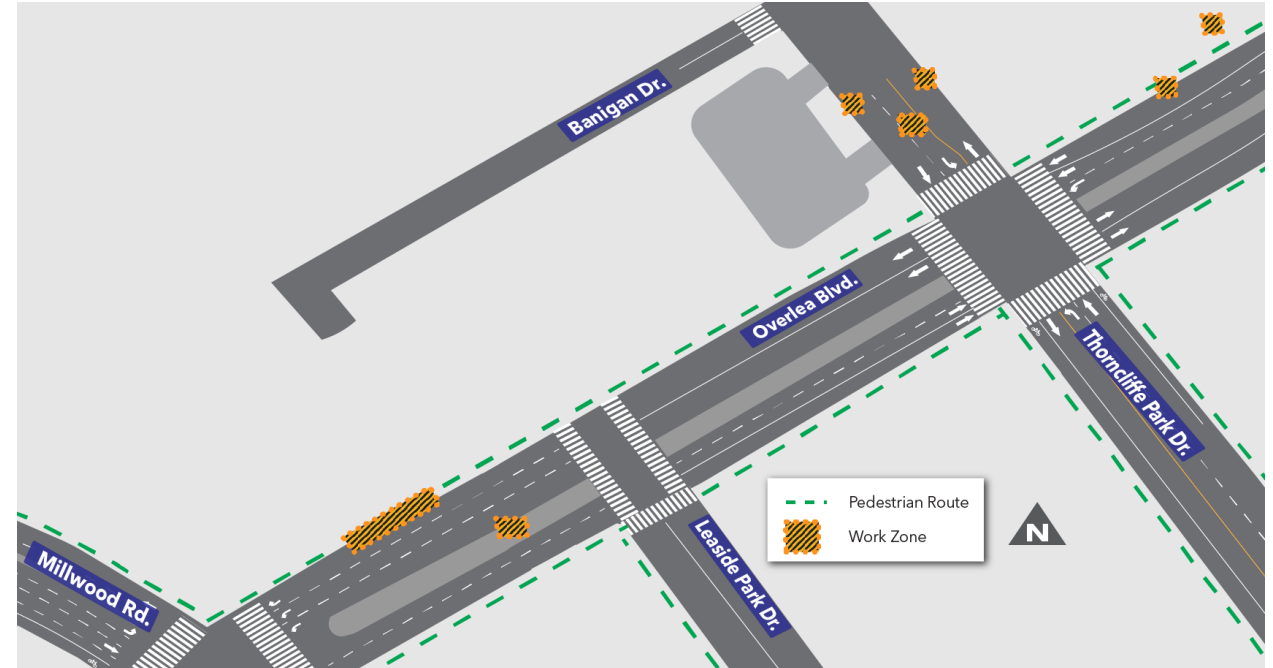
Guideway Construction:
Scheduled to begin by October 2025

Thorncliffe Park Station Construction: Expected to start in Spring 2026



Test pit investigations on Overlea Blvd. & Thorncliffe Park Dr.

- Starting in early May, crews will be conducting test pit investigations along Overlea Boulevard and Thorncliffe Park Drive.
- Test pits are shallow, targeted excavations to confirm the location of buried utility connections.
- Construction work will take place on weekdays from 7 a.m. to 7 p.m.
- The anticipated duration of work is four weeks.
- Traffic lanes and sidewalks may be temporarily impacted near test pit work areas and will be restored at the end of each workday.
- Crews will always maintain one lane of traffic in all directions throughout the duration of work.
- Construction crews will use a hydrovac truck and survey equipment to gather information to progress with the design development phase.



Eight Week Look-ahead

Eight Week Look-Ahead: April 2025

#	Activity	Location	Expected Start	Expected Duration	Impact	Hours of Work	Mitigations
1	Enbridge Gas main relocation	Overlea Blvd	March 2025	4 Months	Vibration, noise, air quality and traffic impacts	7:00 am 7:00 pm	Metrolinx works with Enbridge on resident complains related to construction.
2	THESL - Feeder Cut overs	Overlea Blvd	March 2025	2 Months	Traffic impacts	7:00pm 5:00am	Work is mainly completed at night to limit any impact
3	GIP - Final watermain and sewer connections	Overlea Blvd	June 2025	1 month	Vibration, noise, air quality	7:00 am 7:00 pm	Vibration monitoring, noise monitoring, air quality monitoring
4	GIP - Paving and Boulevard works	Beth Nealson Underpass	July 2025	3 months	Vibration, noise, air quality, traffic	7:00 am 7:00 pm	Vibration monitoring, noise monitoring, air quality monitoring. Some paving work may be completed overnight
5	Mobilization	Beth Nealson Underpass	April	2 Months	Vibration, noise, air quality	7:00 am 5:30 pm	Vibration monitoring, noise monitoring, air quality monitoring
6	GIMP installation	Beth Nealson Underpass	February 25	2 Months	Vibration, noise, air quality	7:00 am 5:30 pm	Vibration monitoring, noise monitoring, air quality monitoring
7	Excavation for track retaining wall	Beth Nealson Underpass	May 5	3 months	Vibration, noise, air quality	7:00 am 5:30 pm	Vibration monitoring, noise monitoring, air quality monitoring
8	Caisson installation	Beth Nealson Underpass	May 5	3 months	Vibration, noise, air quality	7:00 am 5:30 pm	Vibration monitoring, noise monitoring, air quality monitoring
9	Test pits investigation	Overlea Blvd. & Thorncliffe Park Dr.	Early May	4 weeks	Vibration, noise, temporary sidewalk and lane closures	7:00 am 7:00 pm	Traffic barrels, flaggers for sidewalk

Discussion