

Ontario Line

Pape-Riverdale CLC Site Walk

March 25, 2025

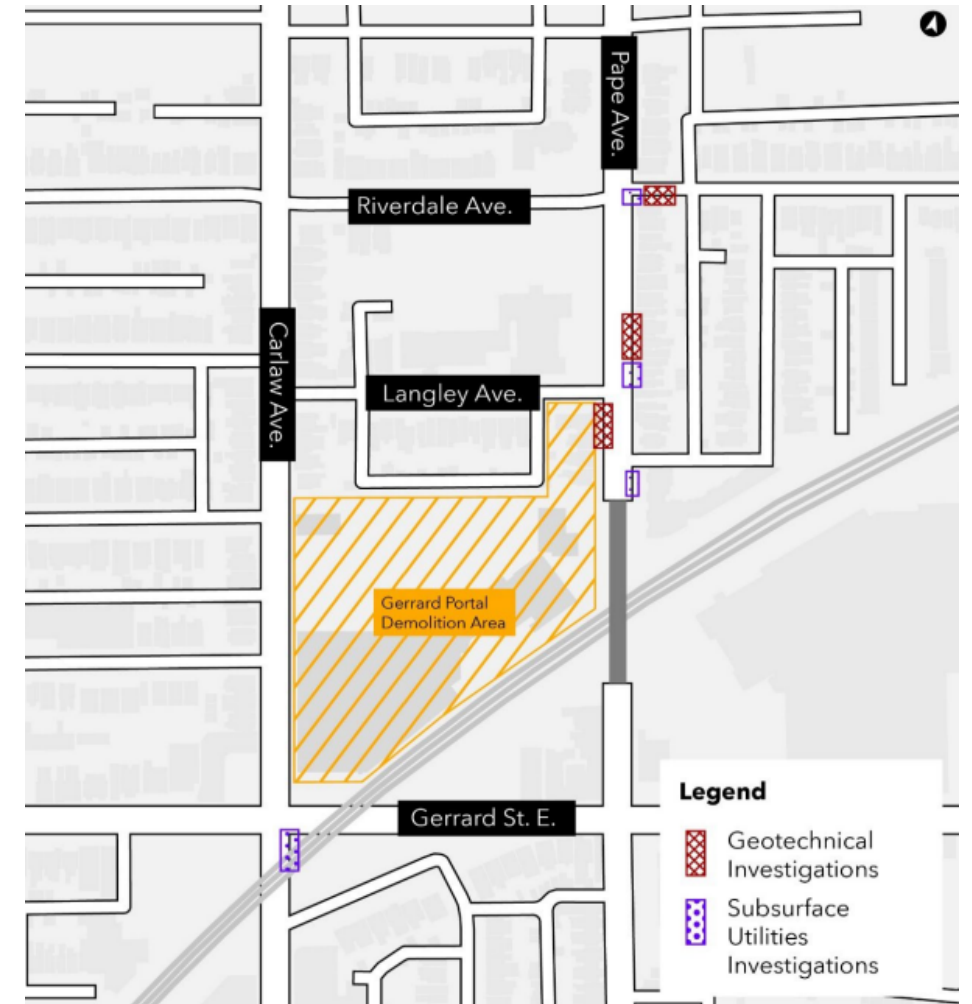
449 Carlaw Demolitions

What's Happening?

- To accommodate construction activities for the Gerrard Portal, crews are demolishing Metrolinx-owned properties at 449 Carlaw Avenue.
- Prior to demolition, crews undertook abatement work to remove all potentially sensitive materials from site.

What to Expect:

- Mechanical demolition of plaza properties began on March 24 and will take place from 7:00 a.m. to 7:00 p.m., Monday to Friday.
- Some noise and dust from trucks and heavy construction equipment is expected.
- Trucks and equipment will enter and exit the 449 Carlaw Avenue site from the Carlaw side.
- Demolition vehicles and equipment may include excavators, front loaders, dump trucks and hydraulic hand tools.
- Demolition will take 3-4 months.



- To accommodate construction activities for the Gerrard Portal and upcoming wet utility works, crews have demolished houses from 388-402 Pape (west side only) and 247 Langley.

- Demolition will take place from 7:00 a.m. to 7:00 p.m. Monday to Friday, and 9:00 a.m. to 7:00 p.m. Saturday.
- Abatement took place previously, prior to mechanical demolition.
- Residents may hear noise caused by work equipment such as excavators, bobcats, and dump trucks. Crews will take measures to minimize noise impacts wherever possible.



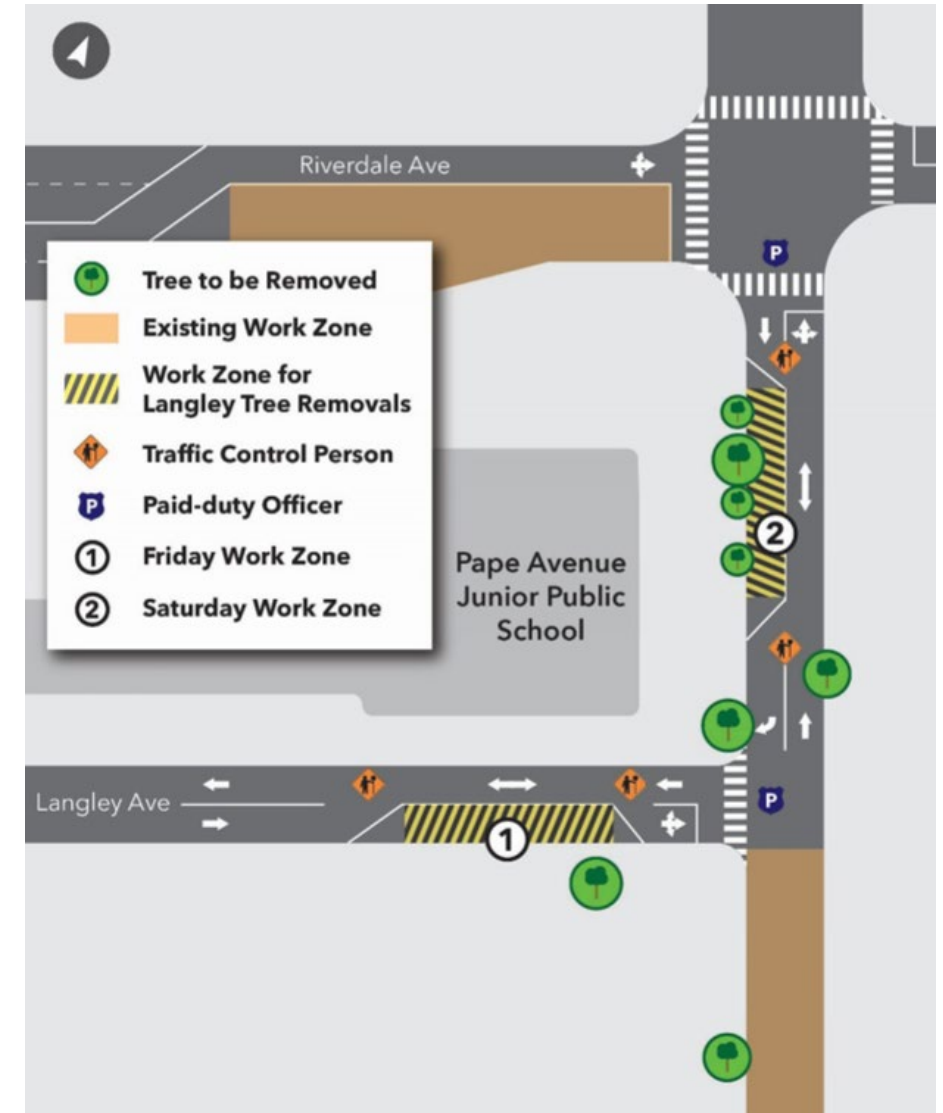
Tree Removals

What's Happening?

- To accommodate upcoming sewer and water main relocation works on Pape Avenue and Langley Avenue, crews have removed eight trees on Langley Avenue and Pape Avenue south of Riverdale Avenue.
- All trees were within the public right-of-way or on Metrolinx-owned property.
- Tree removals occurred outside of bird breeding and nesting periods in accordance with the federal *Migratory Birds Convention Act*, the provincial *Endangered Species Act*, and the provincial *Conservation Authorities Act*

What to Expect?

- Tree removal was conducted over two days – March 21 and March 22. Trees in proximity to the school's noise wall were removed on Saturday, with the rest being removed on Friday.
- Trees along the west side of Pape Avenue interfaced with the existing noise wall; they were removed without any alteration to the wall.



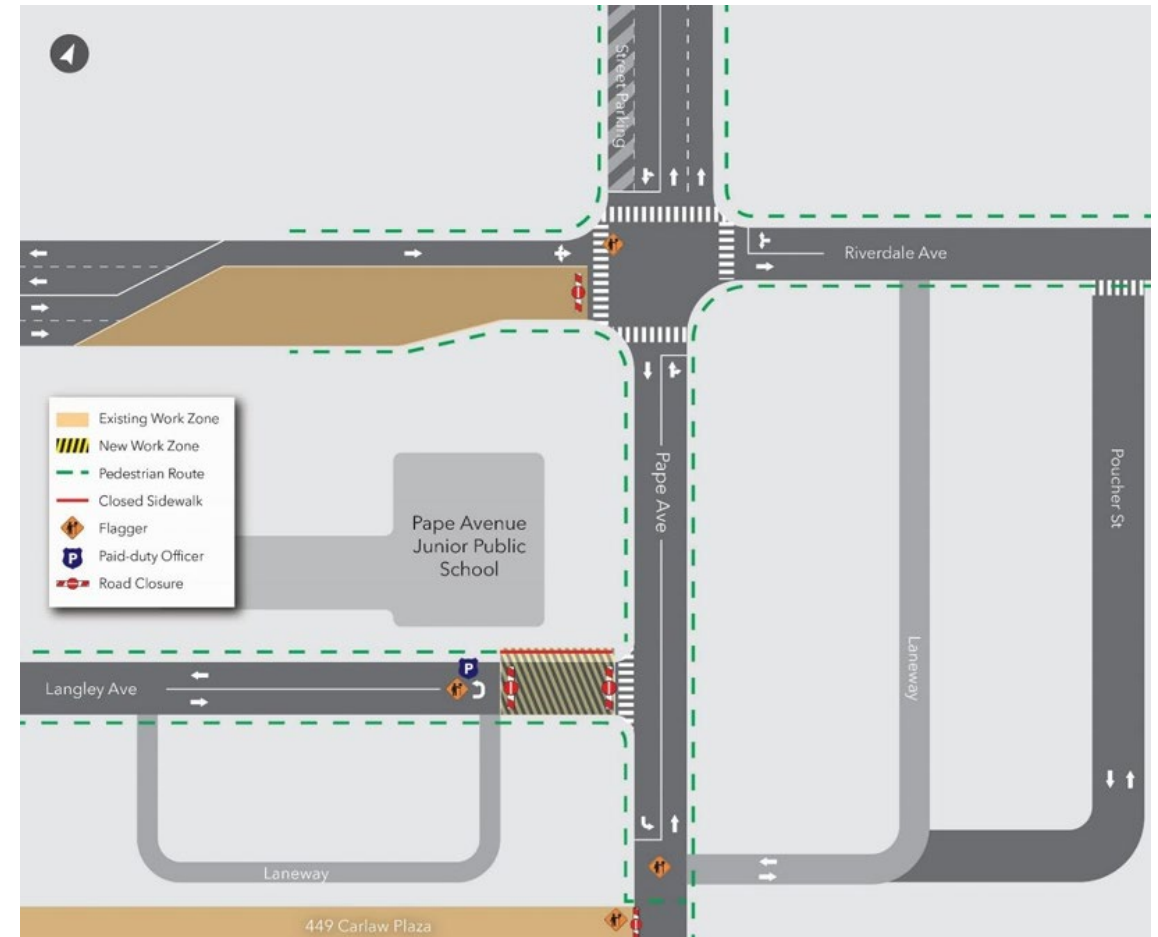
Langley Closure

What's Happening?

- On March 24, crews closed Langley Avenue to all vehicular traffic just west of Pape Avenue.
- Pedestrian access is maintained on the south side of Langley Avenue.
- Within the closure, crews will reconfigure the noise wall scaffolding, construct a new maintenance hole for the combined sewer, and begin digging the receiving shaft for the sewer microtunnelling machine.

What to Expect

- Maintenance hole construction will begin on March 24 and will take place from 7 a.m. to 7 p.m. on weekdays and 9 a.m. to 7 p.m. on weekends.
 - Crews will use excavators, dump trucks, and hydrovac trucks.
- Noise wall adjustments will take place beginning on March 31, with work happening on overnight and on weekends to avoid safety risks to students.
 - After work concludes each day, the contractor will inspect the scaffolding and support system to ensure it is secure and safe.
 - Crews will use light machinery and hand tools.
- Receiving shaft construction will begin in mid-April, and will take place from 7 a.m. to 7 p.m. on weekdays and 9 a.m. to 7 p.m. on weekends.
 - Equipment will include a piling rig, excavators, dump trucks, a generator, and hydrovac trucks.



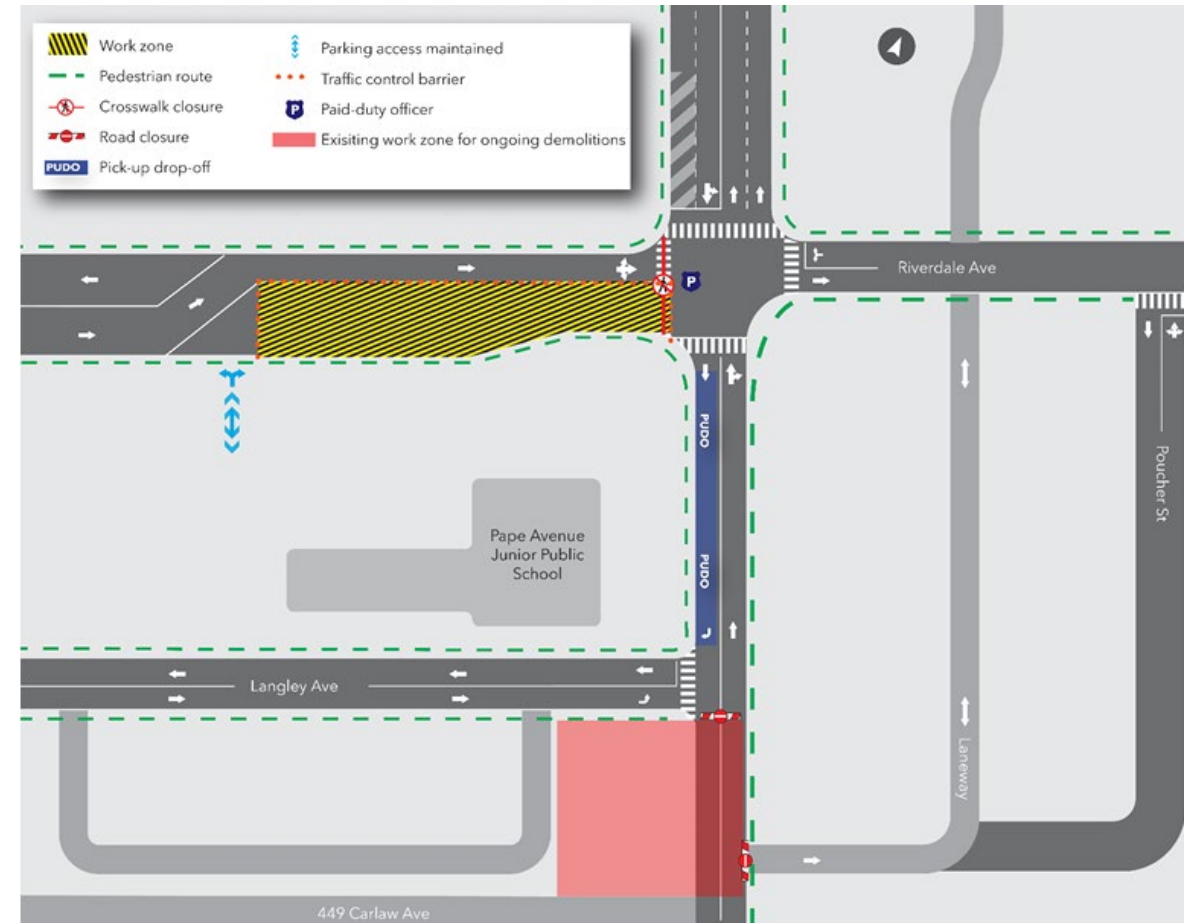
Launch Shaft Construction

What's Happening?

- To accommodate the future construction of the Gerrard tunnel portal and the tunnel boring machine, the storm sewer under Pape Avenue is being relocated to the west, under the eastern portion of the Pape Avenue Junior Public School yard.
- Crews will excavate an approximately eight-metre shaft, from which they will launch the microtunnel boring machine to install the sewer south towards Langley Avenue.
- Due to construction space requirements, Riverdale Avenue will be closed to westbound traffic west of the Pape-Riverdale intersection.

What to Expect

- Work will take place between 7:00 a.m. and 7:00 p.m. on weekdays.
- The shaft site will be fenced and secured for public safety.
- Work will involve the use of excavators, hydrovacs, a piling rig, and a generator. Residents in the area can expect to hear noise from construction equipment; crews will take measures to minimize noise impacts wherever possible.
- The north-south crosswalk on the west side of Pape-Riverdale will be closed.
- The TTC's route 72 bus southbound will be detoured onto Dingwall Avenue due to the closure.



Bain Demolitions

What's Happening?

- On the northeast corner of Pape Avenue and Bain Avenue, crews will construct an emergency exit building for the Ontario Line. To accommodate construction of this building, they have demolished properties at 495 and 497 Pape Avenue.
- Following demolition, crews will prepare the site for construction.

What to Expect

- Crews performed abatement work prior to mechanical demolition, which took place in early-to-mid March.
- Work on the site is taking place from 7 a.m. to 7 p.m. Monday to Friday, and 9 a.m. to 7 p.m. Saturday.
- Work began on February 28 and will take place over 4-5 months.

