

# East Harbour Transit Hub

## GO Expansion

GO service is expanding to serve you better – with more frequent service, more stations, cleaner technology and more connections. Our goal is to deliver the capacity for service every 15 minutes – so you won't need a schedule because you know the next train will be coming soon. GO Expansion will transform the GO rail network from a commuter service into an all-day, rapid transit network. Work has already started on the East Harbour Transit Hub to get you where you need to go, better, faster and easier.

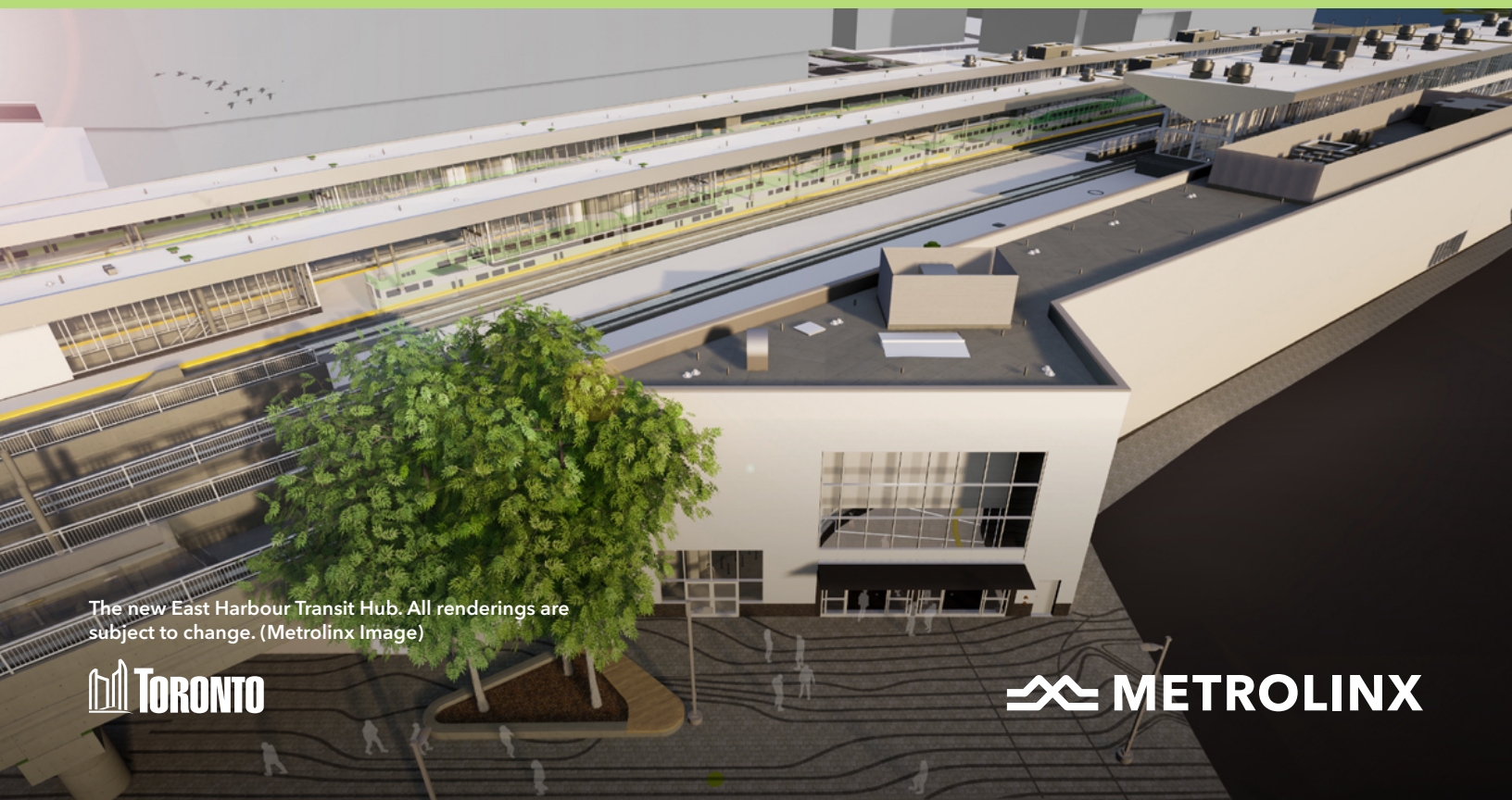
## Project Overview

The East Harbour Transit Hub will be an interchange

station serving the Riverdale, Riverside and Leslieville communities, located immediately east of the Don Valley Parkway and south of Eastern Avenue.

Connecting to the Lakeshore East and Stouffville GO lines, as well as the future Ontario Line subway, this transformative project will provide access to GO trains and TTC services all in one location – strengthening transit options for the City of Toronto.

By building a hub that integrates into other transit systems, the East Harbour Transit Hub will rewire public transit in Toronto, dramatically increasing connectivity within the city, while also creating stronger connections for trips throughout the entire GTHA.



The new East Harbour Transit Hub. All renderings are subject to change. (Metrolinx Image)

## Benefits

The East Harbour Transit Hub will feature the following:

- Six tracks – four for GO and two for Ontario Line
- Modern passenger concourses for GO and Ontario Line
- Accessible passenger pick-up and drop-off area
- Three island platforms – two for GO and one for Ontario Line
- Stairs and elevators to the rail platforms to enable easy connections
- A staffed customer service area
- Bike parking
- Connections to the future Broadview Avenue extension
- Convenient single train connection to Pickering, Whitby and Oshawa, as well as destinations such as Mississauga, Oakville and Hamilton

## What You Need To Know

- The East Harbour Transit Hub is part of the larger GO Expansion program and is a joint initiative of the Government of Canada, Province of Ontario,

the City of Toronto and Metrolinx.

- As Metrolinx works to expand GO train service, customers could see trains arriving at the East Harbour Transit Hub as frequently as every five minutes during the busiest travel hours. Combined with Ontario Line users, the station is expected to serve about 100,000 daily riders.
- Together with the Ontario Line, East Harbour will enable commuters to bypass Union Station, helping to reduce crowding there by an estimated 14 per cent – or 14,000 people – overall during the busiest travel hours.
- The East Harbour Transit Hub will be integrated into a new adjacent Transit Oriented Community, developed by Cadillac Fairview. The 38-acre site will include the creation of a major employment centre expected to bring more than 50,000 jobs, as well as new residential and commercial space, community amenities and parkland.
- Metrolinx will communicate with the community and customers to ensure they are aware of construction impacts. To ask a question about this project please e-mail our community engagement team.



The new East Harbour Transit Hub. All renderings are subject to change. (Metrolinx Image)

### Contact Us:

Toronto East Community  
Engagement Team

[torontoeast@metrolinx.com](mailto:torontoeast@metrolinx.com)

**416-202-3900**

✕ @ **@GOExpansion**

Visit the website:

[www.metrolinx.com/eastharbour](http://www.metrolinx.com/eastharbour)

To subscribe to our regional  
e-newsletter(s) please visit  
**[metrolinx.com/subscribe](http://metrolinx.com/subscribe)**

Disponible en français