

Ontario Line

Corktown/Don Yard Construction Liaison Committee



Agenda

Welcome (10 minutes)

- Land Acknowledgement
- Safety moment
- CLC Expectations

Construction Updates (30 minutes)

- Corktown Station
 - Construction updates
 - Noise & vibration reporting
- Don Yard works
 - Construction updates
 - Noise & vibration reporting
- Upcoming Community Open House

• Q/A and discussion (20 minutes)



LAND ACKNOWLEDGEMENT

Metrolinx acknowledges that we connect communities by building and operating transit within the traditional lands of the Anishinaabe, the Haudenosaunee and the Huron-Wendat peoples, for whom these lands continue to have great importance.

Treaties between First Nations and governments cover these lands, and the promises contained in these Treaties remain relevant to this day.

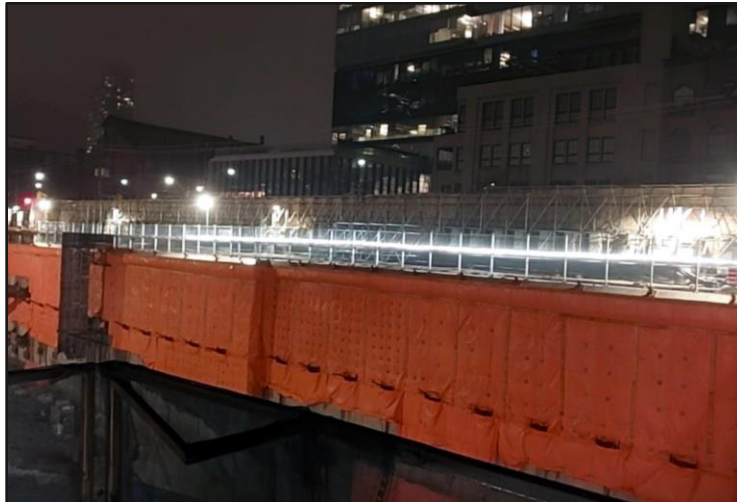
Metrolinx and its employees are committed to understanding the history of these lands and the continued impacts of colonization and take responsibility for actions to advance reconciliation.

Metrolinx will continue to seek the knowledge, expertise and experience of Indigenous partners and commits to doing business in a manner that is built on a foundation of trust, respect, and collaboration.

Safety Moment – Site Illumination

Safety and Security Good lighting helps **prevent accidents** if someone needs to access the site after hours.

It also **discourages theft, vandalism, and unauthorized entry** because a well-lit site is less appealing to trespassers.



Rope lighting along the shaft perimeter along Berkeley St.

Hazard Visibility: Construction sites are full of potential hazards – trenches, equipment, uneven ground. Proper lighting ensures anyone entering the site (security, inspectors, emergency responders) can clearly see and avoid dangers.

Emergency Access: If emergency services need to get onto the site at night, lighting helps them move around safely and respond more effectively.

Regulatory Compliance: Some jurisdictions require minimum lighting levels on construction sites at all times as part of workplace safety regulations.

Protection of Work in Progress: Adequate lighting can also help surveillance cameras capture clear images, protecting against damage to partially completed work or materials stored onsite.

Session Guidelines

We greatly appreciate the community members who are here to take part in this public session.

To ensure that everyone can contribute to a positive and safe community experience, all participants shall adhere to the following *Code of Conduct*:

- Treat the presenters and participants with respect and understanding
- Acknowledge and appreciate the diversity of individuals and their situations
- Refrain from supporting or engaging in any form of discriminatory behaviour

**Metrolinx is committed to fostering a safe and respectful environment.
We encourage respectful and constructive communication.**

Corktown Construction Update

Forepoling

Forepoling involves installing beams at an angle or horizontally ahead of the tunnel face to create a protective canopy. This helps stabilize the ground during tunnel excavation and prepares for the future installation of the arch beam between the two shafts under Front Street East.

- The tubes are being installed from the bottom of the two shafts being excavated.
- **No impacts anticipated**
- **Expected completion date:** Late May 2025



Forming the arch beam for concrete works in the north shaft

CAVERN WORKS - MINING

- The cavern excavation follows the Sequential Excavation Method (SEM)
- The tunnel face is divided in sections excavated and supported in sequence in order to control the ground movements.
- Specialized tunnels equipment will be used including a **compact tunnel excavator** and a **concrete spraying robot**.
- The typical construction cycle for a 1 metre advance includes excavation, installation of lattice girders and shotcrete spraying.
- This construction cycle must be continuous in order to control the ground movement and will be occurring 24/7.
- In the future, **tunnel boring machines will move through the cavern at the station site.**



Example of mini excavator that will be used at Corktown Station. Picture above is for reference only.

Additional photo to come
thursday

Excavation in the north shaft at (20 metres deep) King St. E. & Parliament St.



WORK IN PROGRESS

Support of excavation works **North Site**

- Ongoing shaft excavation (approx. 20 metre deep)
- Rockbolt drilling, mesh and shotcrete application (Level 3, 4)
- Arch beam construction (formwork, rebar, concrete)
- Level 3, strut and walers

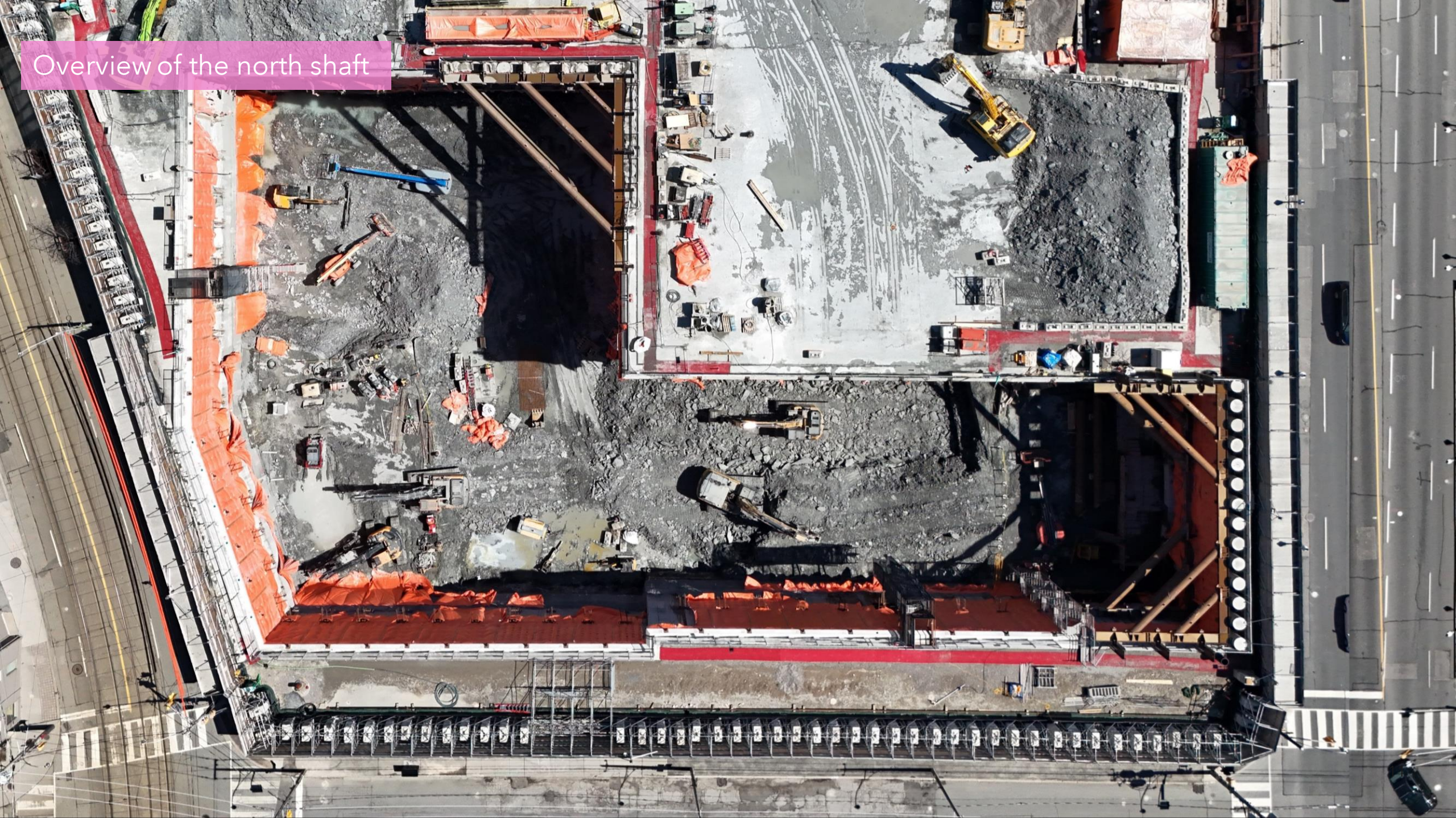
Support of excavation works **South Site**

- Ongoing shaft excavation (approx. 18 metre deep)
- Forepoling (umbrella micro pile) under Front Street East (phase 2 of 2)



A peek at the south and north sites looking north

Overview of the north shaft



Overview of the south shaft



Upcoming Work

EIGHT WEEK LOOK-AHEAD: April 24 – June 20, 2025 – North Shaft

#	Activity	Location	Expected Start	Expected Duration	Impact	Hours of Work	Mitigations
1	Rock excavation rockbolt drilling & shotcrete	North site	Ongoing	2 months	Vibration, noise, air quality	7:00 a.m. to 11:00 p.m. (Monday to Friday with some Saturdays)	Noise wall, hoarding. Dust mitigation includes misting, sweeping. Erosion and sediment control.
2	Tower crane foundation piling	North site	May 2025	1 week	Vibration, noise, air quality	7:00 a.m. to 11:00 p.m. (Monday to Friday with some Saturdays)	Noise wall, hoarding. Dust mitigation includes misting, sweeping. Erosion and sediment control.
3	Forepoling (micropiling) phase 2	North site	May 2025	Two weeks	Vibration, noise, air quality	7:00 a.m. to 11:00 p.m. (Monday to Friday with some Saturdays)	Noise wall, hoarding. Dust mitigation includes misting, sweeping. Erosion and sediment control.
4	Arch beam construction, phase 2	North site	May 2025	Two weeks	Vibration, noise, air quality	7:00 a.m. to 11:00 p.m. (Monday to Friday with some Saturdays)	Noise wall, hoarding. Dust mitigation includes misting, sweeping. Erosion and sediment control.

*Note: All dates and times are subject to change as construction planning progresses

EIGHT WEEK LOOK-AHEAD: April 24 – June 20, 2025 - South Shaft

#	Activity	Location	Expected Start	Expected Duration	Impact	Hours of Work	Mitigations
1	Rock excavation, rockbolt drilling & shotcrete	South site	Ongoing	2 months	Vibration, noise, air quality	7:00 a.m. to 11:00 p.m. (Monday to Friday with some Saturdays)	Noise wall, hoarding. Dust mitigation includes misting, sweeping. Erosion and sediment control.
2	Forepoling (micropiling) phase 2	South site	Ongoing	Two weeks	Vibration, noise, air quality	7:00 a.m. to 11:00 p.m. (Monday to Friday with some Saturdays)	Noise wall, hoarding. Dust mitigation includes misting, sweeping. Erosion and sediment control.
3	Tower crane foundation piling	South site	Late April 2025	1 week	Vibration, noise, air quality	7:00 a.m. to 11:00 p.m. (Monday to Friday with some Saturdays)	Noise wall, hoarding. Dust mitigation includes misting, sweeping. Erosion and sediment control.
4	Arch beam construction, phase 1	South site	May 2025	3 weeks	Vibration, noise, air quality	7:00 a.m. to 11:00 p.m. (Monday to Friday with some Saturdays)	Noise wall, hoarding. Dust mitigation includes misting, sweeping. Erosion and sediment control.
5	Cavern excavation	South site	June 2025	6 months	Vibration, noise, air quality	24 hours (Monday to Saturday)	Noise wall, hoarding. Dust mitigation includes misting, sweeping. Erosion and sediment control.

*Note: All dates and times are subject to change as construction planning progresses

2025 CONSTRUCTION LOOK-AHEAD

Timing	Activity	Location	Details and Purpose
Spring	Ongoing rock excavation & hauling	North & South sites - within the site and along designated haul routes.	Removing large volumes material from the station shaft to build a new subway cavern and tunnel underground. Dump trucks and various excavators will be used to complete this work.
Summer/Fall	Cavern excavation (south)	South site - within the site and along designated haul routes.	Removing large volumes material from the station shaft to build a new subway cavern and tunnel underground. Dump trucks and various excavators will be used to complete this work.
Fall/Winter	Cavern excavation (south)	South site - within the site and along designated haul routes.	Removing large volumes material from the station shaft to build a new subway cavern and tunnel underground. Dump trucks and various excavators will be used to complete this work.

*Note: All dates and times are subject to change as construction planning progresses

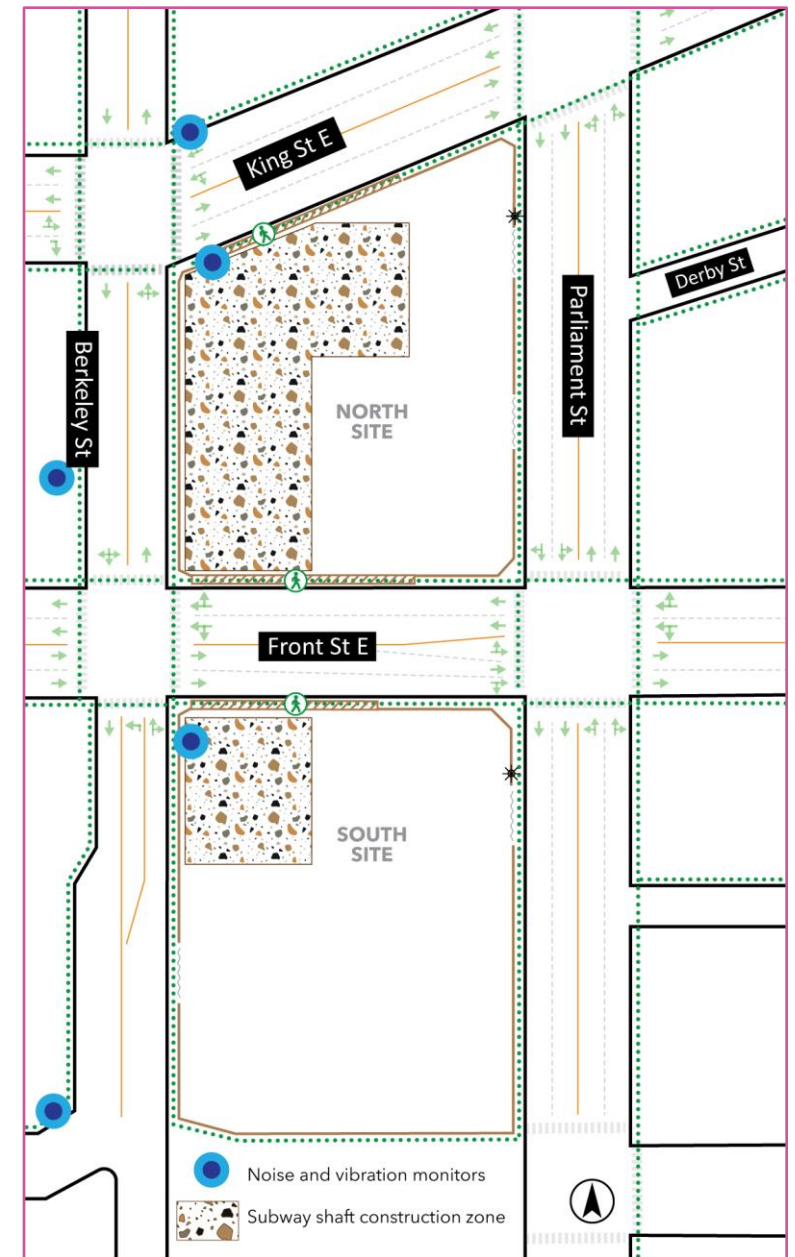
Noise & Vibration Exceedances Reporting Sites at Corktown

January, February, March 2025

Noise and Vibration Monitoring Update

January / February / March 2025

- Noise and vibration monitors are placed closest to locations classified as major works (station shaft work zones). See map.
- **OTG construction activities did not exceed targeted vibration or noise levels in January.**
- **Two exceedances reported for February**
- **One exceedance reported for March**
- Exceedances unrelated to Ontario Line Corktown construction are excluded from the tables.



Registered Exceedances at Noise Receptor Locations: February 2025

No.	Date/Time of Exceedances	Detail	Site Location	Source	Corrective Action	Complaint Received (Y/N)
1.	February 19 - Daytime	Noise	North	Breaking concrete/hammering activity.	Exceedances cause by operation of hydraulic breaker for ongoing rock excavation. Contractors recommended to place acoustic barriers between noise source and receptor and to utilize rock breaker shroud attachment to mitigate any hydraulic hammering activity	N
2.	February 25 - Daytime	Noise	North	Breaking concrete/hammering activity.	Exceedances cause by operation of hydraulic breaker for ongoing rock excavation. Contractors recommended to place acoustic barriers between noise source and receptor and to utilize rock breaker shroud attachment to mitigate any hydraulic hammering activity.	N

Registered Exceedances at Noise Receptor Locations: March 2025

No.	Date/Time of Exceedances	Detail	Site Location	Source	Corrective Action	Complaint Received (Y/N)
1.	March 20 - Daytime	Noise	North	Exceedances due to tree pruning.	Contractors recommended to place acoustic barriers between noise source and receptor where possible to mitigate.	N

- The above table provides information on noise levels measured over 10-minute intervals (10-minute average).
- Exceedances unrelated to Corktown construction are not reflected in this table.

Don Yard Construction Update



Three-Month Look-Ahead Schedule:

Note: all dates are subject to change as construction planning progresses

#	Activity	Location	Expected Start	Expected Duration	Impact	Hours of Work	Mitigations
1.	Noise barrier installation	Don Yard	Ongoing	Early May 2025	No community impacts expected	Monday to Friday Daytime: 7 a.m. – 5 p.m. (ongoing)	The noise barrier is a mitigation – it is 5-metre-tall and being installed along the north side of the site.
2.	Pile drilling	Don Yard	Ongoing	Late May 2025	<ul style="list-style-type: none">• Noise• Dust• Site lighting	Monday to Fridays: 7 a.m. – 2 a.m. Saturday: 7 a.m. – 5 p.m.	Use of auger cleaner on piling rig. Noise barriers in place. Lighting pointed downward. Wetting spoils.
3.	Jet grouting	Don Yard	Ongoing	July 2025	<ul style="list-style-type: none">• Minor noise• Site lighting	Monday to Saturday: Day and night (24 hrs.)	Acoustic blankets on equipment. Site lighting pointed down.
4.	Tieback installation	Don Yard	Ongoing	December 2025	<ul style="list-style-type: none">• Noise	Monday to Fridays: 7 a.m. – 7 p.m. Saturdays: 7 a.m. – 5 p.m.	Work performed during the day.
5.	Excavation and hauling	Don Yard	Ongoing	December 2025	<ul style="list-style-type: none">• Noise• Dust	Monday to Friday Daytime: 7 a.m. – 5 p.m. (ongoing) Nighttime: 7 p.m. – 7 a.m. (intermittently – not consecutive through Dec. 2025)	Noise barrier, broadband back up alarms, wheel wash station and street cleaning.
6.	DVP traffic lane closures	Don Yard	June 2025	Approx. one week	<ul style="list-style-type: none">• Traffic changes	Exact work hours to be determined – overnight work is required to minimize traffic delays during peak hours.	Electronic signage posted in advance of the closures to notify drivers.

Progress Photos - March 2025

Piling Work



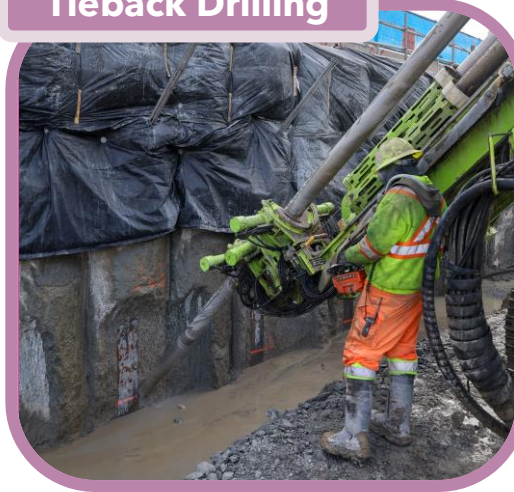
- Piling involves drilling vertical columns into the ground to provide foundational support and stability
- Approx. 807 king piles have been drilled for the new subway tunnel and portal

Excavating and Dirt Hauling



- Material is being removed to create a box that will form the future Ontario Line tunnel
- 38,000 m³ of material has been removed to date

Tieback Drilling



- Tiebacks are horizontal rods and wires that help retain material
- Tiebacks are required to support the excavation for the future subway tunnel - 321 tiebacks have been drilled in the Don Yard

In-Water Temporary Bridge Structure



- A temporary bridge support structure (trestle) is being built in the Don River
- This trestle will enable construction of the new permanent bridge

Mitigation Updates – March 2025

- KO Constructors is consistently monitoring work activities and developing new mitigations to minimize community impacts
- In the Don Yard, innovative tools have implemented to manage and mitigate disruption, specifically noise and dust

Truck Wash Station



Auger Cleaner

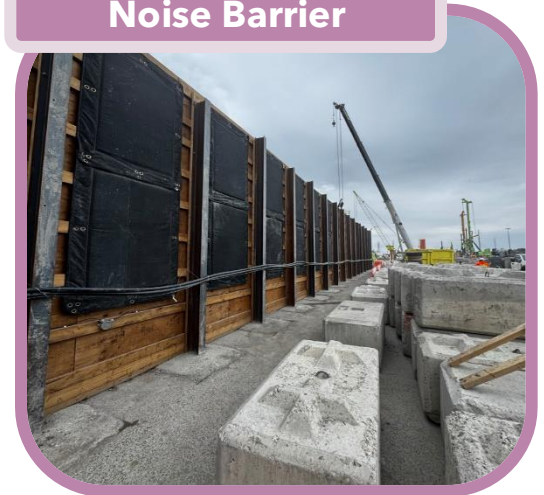


*Example image
from another site*

Boot Wash Station



Noise Barrier



- These include ongoing measures such as:
 - Industry leading truck wash station
 - Auger cleaning device
 - Continuous street sweeping
 - Frequent street washing
- New mitigation measures installed on-site include:
 - Boot-wash station
 - 5m tall Noise barrier wall

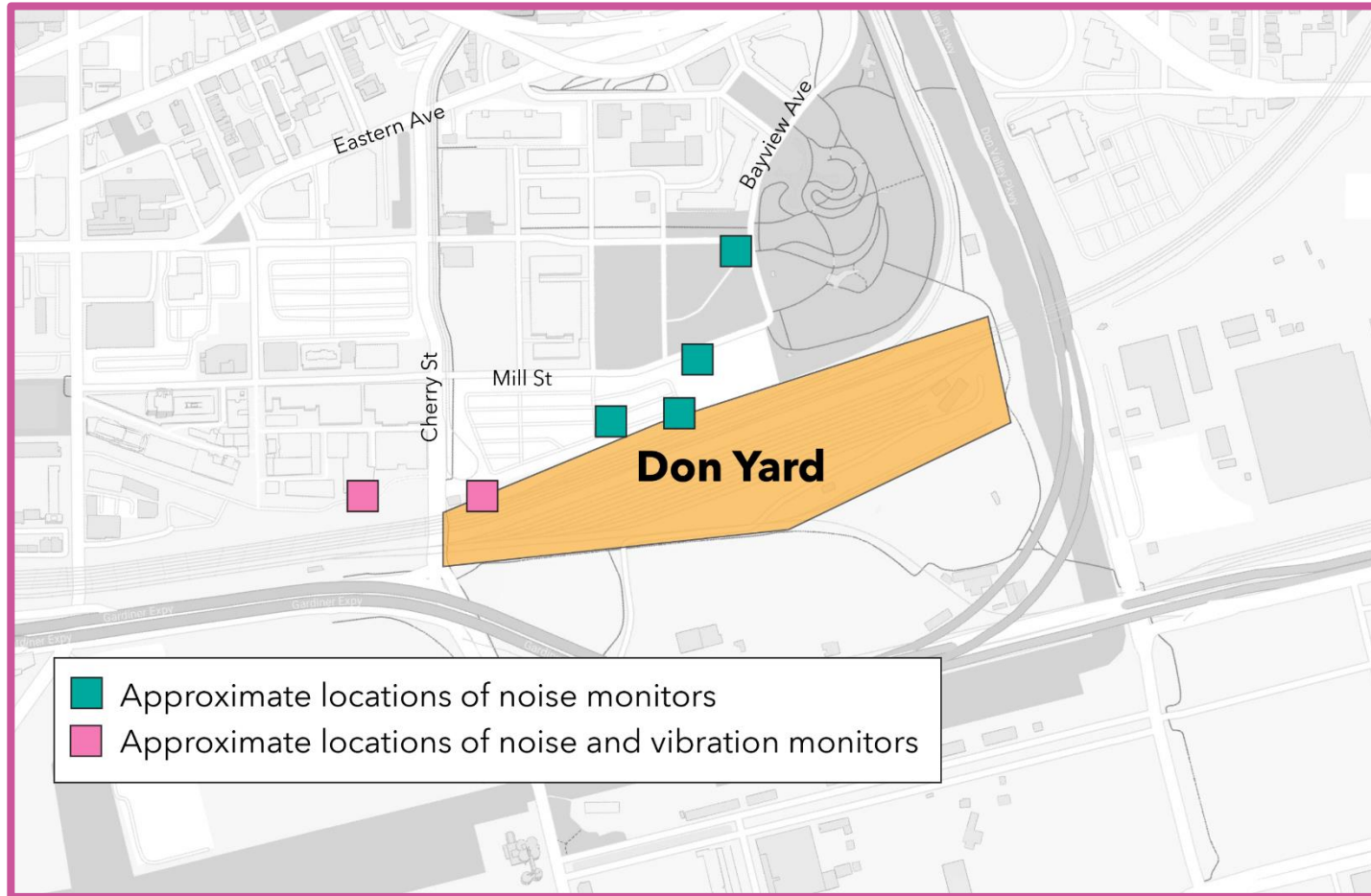
2025 Construction Look-Ahead

Timing	Activity	Location	Details and Purpose
Spring	Pile drilling	South side of the Don Yard rail corridor between Cherry Street and Mill Street.	Ongoing pile drilling and removal of spoils from the Don Yard to support the excavation of the new subway tunnel and portal.
	Excavation and hauling	Within the site and along designated haul routes.	Removing large volumes material from the Don Yard to build a new subway tunnel and portal that will transition the Ontario Line from underground to above ground. Dump trucks and excavators will be used to complete this work.
Summer	Jet Grouting	South side of Corktown Common.	Completion of jet grouting for the subway portal.
	Bridge Superstructure	Southeast corner of Corktown Common, on the west bank of the Don Valley.	Ongoing construction of an access ramp to the north trestle. Bridge foundation construction, in and out of water, including grading work and preparing a laydown area. Some traffic lanes on the DVP will be closed to complete this work.
	Don Valley Pkwy. (DVP) Traffic Lane Closures	West shoulder of the Don Valley Parkway's southbound lanes.	Closure of DVP lanes and ramps to install monitoring equipment on the existing rail bridge and in the ground along the west shoulder of the southbound lanes. This equipment is required to monitor existing infrastructure during the bridge work.
Fall/Winter	Cut and Cover Tunnel	South side of the Don Yard rail corridor between Cherry Street and Mill Street.	Completion of excavation and begin concrete pouring for base slabs and walls in cut and cover tunnel.
	DVP Trestle and Lower Don Bridge	South side of the GO train bridge over the Don Valley	With the completion of in-water works, the DVP trestle and pieces of the Lower Don Bridge will arrive and be set up. This work will continue into 2026.

Don Yard Noise and Vibration Update



Noise and Vibration Update: March 2025



- There are six noise monitors and two vibration monitors located along the Don Yard site
- No vibration exceedances were recorded in March
- Most nighttime noise exceedances were related to truck activity associated with excavation and hauling work
- A 5m tall wood noise barrier has been installed along the site perimeter to minimize noise from hauling activities
- The Contractor has also encouraged drivers to exit the site at a slower pace to minimize noise from engine revving and gear switches
- There was one day when an exceedance coincided with a noise complaint
- It was determined that the source of this noise complaint was unrelated to Don Yard construction

Noise and Vibration Update: March 2025

No.	Date/Time of Exceedances	Detail	Location	Source	Corrective action	Complaint received (Y/N)
1.	March 3 - Daytime and nighttime	Noise	Near Cherry St. & Mill St.	<ul style="list-style-type: none"> Drill rig installing piles Broadband back up alarm 	<ul style="list-style-type: none"> Piling: Auger cleaning tool, application of polymer slurry to loosen cohesive soils, use of high revolutions per minute (RPM) spinning approach for spoil removal Trucks: Noise barrier (5m tall) is being installed around the site 	Y - complaint was regarding noise from tonal backup alarms. The Contractor reviewed the noise monitoring data and confirmed that the tonal alarm was not coming from their vehicles.
2.	March 4, 2025 - Daytime	Noise	Near Cherry St. & Mill St.	<ul style="list-style-type: none"> Drill rig installing piles Broadband back up alarm 	<ul style="list-style-type: none"> Piling: Auger cleaning tool, application of polymer slurry to loosen cohesive soils, use of high revolutions per minute (RPM) spinning approach for spoil removal Trucks: Noise barrier (5m tall) is being installed around the site 	N
3.	March 6, 2025 - Daytime	Noise	Cherry St. & Mill St.	<ul style="list-style-type: none"> Drill rig installing piles 	<ul style="list-style-type: none"> Noise barriers installed around the drill rig where possible, auger cleaning tool, application of polymer slurry to loosen cohesive soils, use of high revolutions per minute (RPM) spinning approach for spoil removal 	N
4.	March 7, 2025 - Daytime and nighttime	Noise	Near Cherry St. & Mill St.	<ul style="list-style-type: none"> Drill rig installing piles Shoring work (installing nails) 	<ul style="list-style-type: none"> Noise barriers installed around the drill rig where possible, application of polymer slurry to loosen cohesive soils, use of high revolutions per minute (RPM) spinning approach for spoil removal Shoring work (nail installation) only permitted during the daytime 	N

- The above table provides information on instantaneous noise levels (Lmax sound levels).
- Exceedances unrelated to the Don Yard - Enabling Works Three Project are not reflected in this table.

Noise and Vibration Update: March 2025

No.	Date/Time of Exceedances	Detail	Location	Source	Corrective action	Complaint Received (Y/N)
5.	March 8 – Nighttime	Noise	Near Mill St.	<ul style="list-style-type: none"> Truck engine 	<ul style="list-style-type: none"> Noise barrier (5m tall) is being installed around the site Encouraging truck drivers to be mindful and driver slower out of the site No truck idling on site 	N
6.	March 10 – Daytime and nighttime	Noise	Near Mill St.	<ul style="list-style-type: none"> Drill rig installing piles 	<ul style="list-style-type: none"> Noise barriers installed around the drill rig where possible, auger cleaning tool, application of polymer slurry to loosen cohesive soils, use of high revolutions per minute (RPM) spinning approach for spoil removal 	N
7.	March 11 – Daytime and nighttime	Noise	Near Mill St.	<ul style="list-style-type: none"> Drill rig installing piles Truck air blowout and maintenance 	<ul style="list-style-type: none"> Noise barrier (5m tall) is being installed around the site Encouraging truck drivers to be mindful and driver slower out of the site Reminded crews to be mindful when performing maintenance work 	N
8	March 12 – Daytime and nighttime	Noise	Near Mill St.	<ul style="list-style-type: none"> Drill rig installing piles Truck breaking 	<ul style="list-style-type: none"> Piling: Auger cleaning tool, application of polymer slurry to loosen cohesive soils, use of high revolutions per minute (RPM) spinning approach for spoil removal Trucks: Advised subcontractor to perform maintenance on truck breaks 	N

- The above table provides information on instantaneous noise levels (Lmax sound levels).
- Exceedances unrelated to the Don Yard – Enabling Works Three Project are not reflected in this table.

Noise and Vibration Update: March 2025

No.	Date/Time of Exceedances	Detail	Location	Source	Corrective action	Complaint received (Y/N)
9.	March 13 - Daytime	Noise	Near Mill St.	<ul style="list-style-type: none"> Drill rig installing piles 	<ul style="list-style-type: none"> Noise barriers installed around the drill rig where possible, auger cleaning tool, application of polymer slurry to loosen cohesive soils, use of high revolutions per minute (RPM) spinning approach for spoil removal 	N
10.	March 14 - Daytime	Noise	Near Cherry St. & Mill St.	<ul style="list-style-type: none"> Drill rig installing piles 	<ul style="list-style-type: none"> Noise barriers installed around the drill rig where possible, auger cleaning tool, application of polymer slurry to loosen cohesive soils, use of high revolutions per minute (RPM) spinning approach for spoil removal 	N
11.	March 17 - Daytime	Noise	Near Mill St.	<ul style="list-style-type: none"> Housekeeping and equipment management Installing temporary noise barrier Drill rig installing piles 	<ul style="list-style-type: none"> Standard noise mitigations for piling (mentioned above) were in place Other activities were related to installing mitigations and keeping the site clean - exceedances were minimal and observed during the day within the site (not at the receptor) Works proceeded and monitoring continued 	N
12.	March 18 & March 19 - Daytime	Noise	Near Mill St.	<ul style="list-style-type: none"> Drill rig installing piles 	<ul style="list-style-type: none"> Noise barriers installed around the drill rig where possible, auger cleaning tool, application of polymer slurry to loosen cohesive soils, use of high revolutions per minute (RPM) spinning approach for spoil removal 	N
13.	March 20 - Daytime	Noise	Near Mill St. .	<ul style="list-style-type: none"> Housekeeping and material handling 	<ul style="list-style-type: none"> Crews were reminded to be mindful when performing these activities 	N

- The above table provides information on instantaneous noise levels (L_{max} sound levels).
- Exceedances unrelated to the Don Yard - Enabling Works Three Project are not reflected in this table.

Noise and Vibration Update: March 2025

No.	Date/Time of Exceedances	Detail	Location	Source	Corrective action	Complaint received (Y/N)
14.	March 21 - Daytime	Noise	Near Mill St.	<ul style="list-style-type: none"> Drill rig installing piles Installing temporary noise barrier 	<ul style="list-style-type: none"> Standard noise mitigations for piling (mentioned above) were in place The temporary noise barrier is being installed to mitigate noise from future work Exceedances were minimal and observed during the daytime - works proceeded and monitoring continued 	N
15.	March 24 - 26 - Daytime and nighttime	Noise	Near Mill St.	<ul style="list-style-type: none"> Drill rig installing piles Broadband backup alarm 	<ul style="list-style-type: none"> Piling: Auger cleaning tool, application of polymer slurry to loosen cohesive soils, use of high revolutions per minute (RPM) spinning approach for spoil removal Trucks: Noise barrier (5m tall) is being installed around the site 	N
16.	March 27 - Daytime	Noise	Near Mill St.	<ul style="list-style-type: none"> Installing temporary noise barrier 	<ul style="list-style-type: none"> The temporary noise barrier is being installed to mitigate noise from future work Exceedances were minimal and observed during the daytime - works proceeded and monitoring continued 	N
17.	March 28 - Daytime	Noise	Near Mill St. .	<ul style="list-style-type: none"> Drill rig installing piles 	<ul style="list-style-type: none"> Auger cleaning tool, application of polymer slurry to loosen cohesive soils, use of high revolutions per minute (RPM) spinning approach for spoil removal 	N

- The above table provides information on instantaneous noise levels (Lmax sound levels).
- Exceedances unrelated to the Don Yard - Enabling Works Three Project are not reflected in this table.

Noise and Vibration Update: March 2025

No.	Date/Time of Exceedances	Detail	Location	Source	Corrective action	Complaint received (Y/N)
18	March 31 - Daytime and nighttime	Noise	Near Mill St.	<ul style="list-style-type: none"> • Drill rig installing piles • Trucks leaving the site 	<ul style="list-style-type: none"> • Piling: Auger cleaning tool, application of polymer slurry to loosen cohesive soils, use of high revolutions per minute (RPM) spinning approach for spoil removal • Trucks: Noise barrier (5m tall) is being installed around the site, encouraged drivers to be more mindful and drive slowly when leaving the site 	N

- The above table provides information on instantaneous noise levels (Lmax sound levels).
- Exceedances unrelated to the Don Yard - Enabling Works Three Project are not reflected in this table.

Community Open House

Thursday, May 1st
5:30 p.m. to 7:00 p.m.

At The Jamii Hub, 264 The Esplanade



KEEPING YOU INFORMED

Metrolinx will keep the community, residents and businesses informed by providing project updates, seeking input and feedback, while addressing questions and concerns effectively and quickly.

Next CLC meeting: May 22, 2025

Connect with us:

- Zahrah Munas Community Engagement Advisor
Zahrah.Munas@metrolinx.com
437-328-5354
- Mark Clancy, Senior Manager, Community Engagement
Mark.Clancy@metrolinx.com
647-449-2857
- Ontario Line at OntarioLine@metrolinx.com

Email: OntarioLine@metrolinx.com

Telephone 24/7 @ 416-202-5100

Follow us on social media:

Twitter / Facebook / Instagram: @OntarioLine



*Scan here to sign up
for the Ontario Line
e-newsletter*



*Scan here to explore
Ontario Line CLC
documents*

