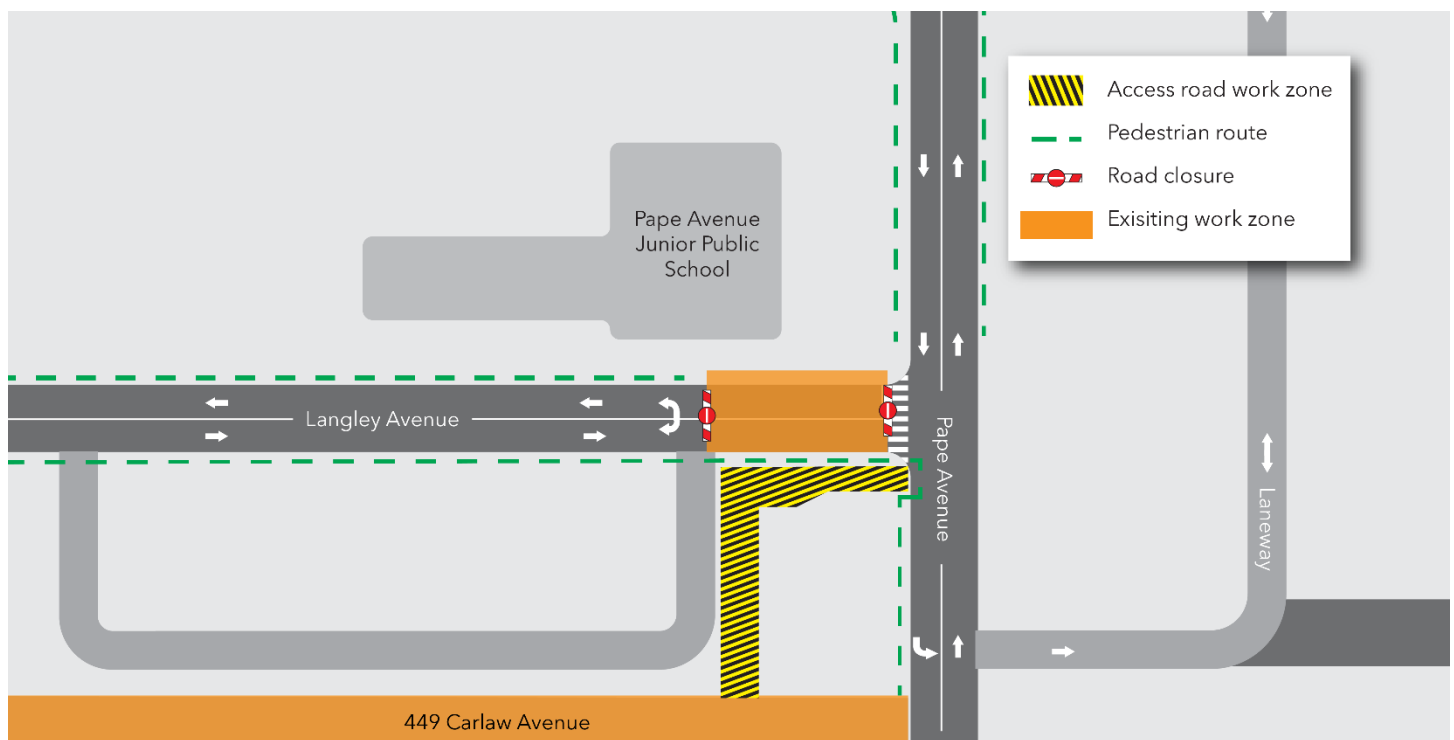


# Access Road Construction from 449 Carlaw to Pape Avenue

**Expected Start Date:** As early as Wednesday, May 14

**Expected Duration:** Two (2) weeks

**Hours of work:** Weekdays, 7 a.m. to 7 p.m.  
Saturdays 9 a.m. to 7 p.m.



## What is Happening?

- As construction of the Gerrard Portal for the Ontario Line continues to ramp up, crews will build a construction access road from the 449 Carlaw worksite to Pape Avenue.
  - The access road is being built to provide alternative access to 449 Carlaw for construction activity. This will allow vehicles to continue using the approved haul routes when Pape is closed south of Langley in the future.
    - Construction traffic will enter/exit the access road from Pape Avenue just south of the Pape-Langley intersection.

- The access road will be built within the footprint of the previously demolished properties from 388 - 402 Pape Avenue and 247 Langley Avenue.
- Work is expected to start mid-May and will take approximately two weeks to complete.

## What to expect

### Construction

- Crews will be grading, compacting and asphaltting the work zone to create the access road.
  - Compaction is expected to take 1 -2 days to complete and will produce vibrations that will be felt by the nearby community. Crews will monitor vibrations throughout the work to ensure that levels do not exceed the City of Toronto vibration limits.
  - Vibratory compaction may be used to ensure road foundations are safe and structurally sound.
- Residents and businesses in the area may hear noise caused by work equipment. Crews will take measures to minimize noise impacts wherever possible.
- Noise and air quality monitoring will occur 24/7 during the work to check for exceedances.
- Work may be delayed due to weather conditions or unforeseen circumstances.

### Traffic and Pedestrian Details

- The traffic and pedestrian measures previously implemented for existing work will be maintained during access road construction work.
- No additional traffic or pedestrian route impacts are anticipated during this work.

### Safety

- Signage will be posted around the site to direct pedestrians.
- Equipment may be left on site but will be properly secured and stored to ensure safety.

#### Contact us:

Call us 24/7 at: **416-202-5100**

Write to us at:

**[ontarioline@metrolinx.com](mailto:ontarioline@metrolinx.com)**

Find us on Twitter, Facebook, and

Instagram: **[@ontarioline](#)**

Visit our website:

**[www.metrolinx.com/ontarioline](http://www.metrolinx.com/ontarioline)**

#### Visit our community offices:

**770 Queen Street East (near Queen & Broadview)**

General hours:

Mondays, Tuesdays, and Fridays: 9 a.m. to 5 p.m.

Wednesdays and Thursdays: 10 a.m. to 6 p.m.

#### Thornccliffe Park:

East York Town Centre  
45 Overlea Blvd., Toronto, ON M4H 1C3  
Unit 153 (across from the Rogers store)

General hours:

Monday to Friday, 9 a.m. to 5 p.m.