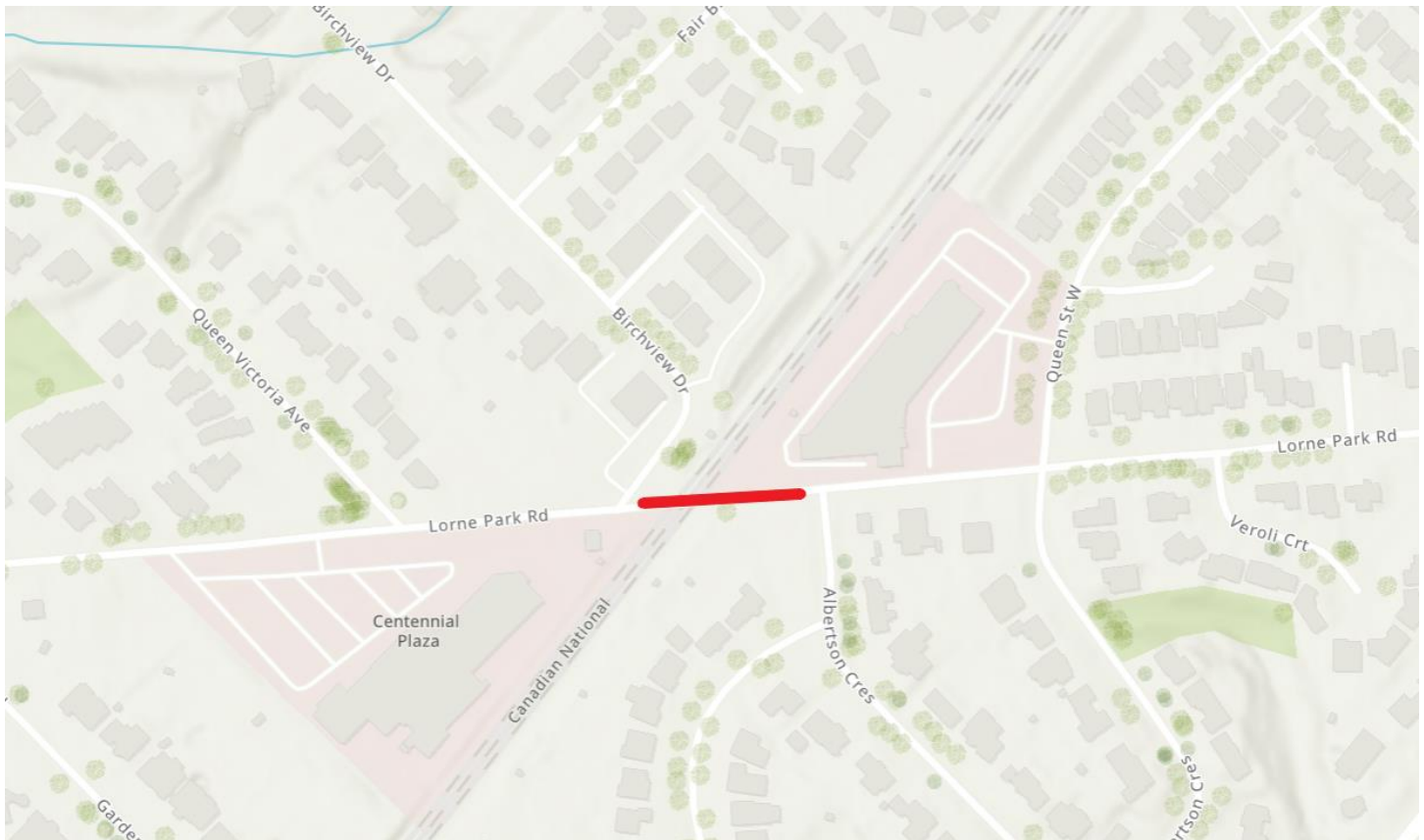


Crossing Rehabilitation at Lorne Park Road

May 23, 2025 to May 26, 2025



Background

Critical State of Good Repair work collectively aims to ensure Metrolinx operated rail network's safety and reliability, mitigates potential service disruptions, and improves on-time performance, customer satisfaction and passenger comfort. Additionally, this work will extend the lifespan of critical infrastructure by reducing the need for frequent maintenance intervention. GO service is expanding to serve you better - with more frequent service, more stations, cleaner technology, and more connections.

What work is taking place?

As part of the critical required works, we will be performing a variety of works including the removal and replacement of the ballast, track panels, and asphalt paving. This work will occur over consecutive days and nights starting on Friday, May 23rd at 7:00 PM straight through the weekend until the morning of Monday, May 26th at 4:00 AM. Please note that there will be a full road closure during the working period aside from local traffic permittance on Lorne Park Road.

Timing and what to expect

- This work is scheduled for May 23, 2025, to May 26, 2025
- These dates are tentative, and work may be rescheduled due to weather or unforeseen circumstances.
- Pedestrian pathways will be closed for the duration of the work.
- Work will be conducted as efficiently as possible to minimize disturbances, but residents and businesses near the corridor can expect to hear noise caused by construction equipment related to this work.

Questions

If you have any questions about this work or would like to be included on future email communications from us, please do not hesitate to call us at 416-202-7500 or email us at Peel@metrolinx.com.

Please respect all safety and exclusion measures installed to protect you.

Thank you for your patience as we work to transform the rail corridor in your area.

Disponible en français sur demande. Si vous êtes intéressé, veuillez envoyer un courriel à: Peel@Metrolinx.com



Contact Us:

Write to us at: peel@metrolinx.com

Find us on Twitter @GOExpansion

Visit the website: <http://www.metrolinx.com/peel>

Call: (416) 202-7500