

Ontario Line

Moss Park Construction Liaison Committee

May 15, 2025



Agenda

Welcome (5 minutes)

- Introductions
- Land acknowledgement
- Safety moment
- Session Guidelines

Presentation (25 minutes)

- Construction updates

Feedback and Discussion (30 minutes)

- Keeping you informed



LAND ACKNOWLEDGEMENT

Metrolinx acknowledges that we connect communities by building and operating transit within the traditional lands of the Anishinaabe, the Haudenosaunee and the Huron-Wendat peoples, for whom these lands continue to have great importance.

Treaties between First Nations and governments cover these lands, and the promises contained in these Treaties remain relevant to this day.

Metrolinx and its employees are committed to understanding the history of these lands and the continued impacts of colonization and take responsibility for actions to advance reconciliation.

Metrolinx will continue to seek the knowledge, expertise and experience of Indigenous partners and commits to doing business in a manner that is built on a foundation of trust, respect, and collaboration.

Session Guidelines

We greatly appreciate the community members who are here to take part in this public session.

To ensure that everyone can contribute to a positive and safe community experience, all participants shall adhere to the following *Code of Conduct*:

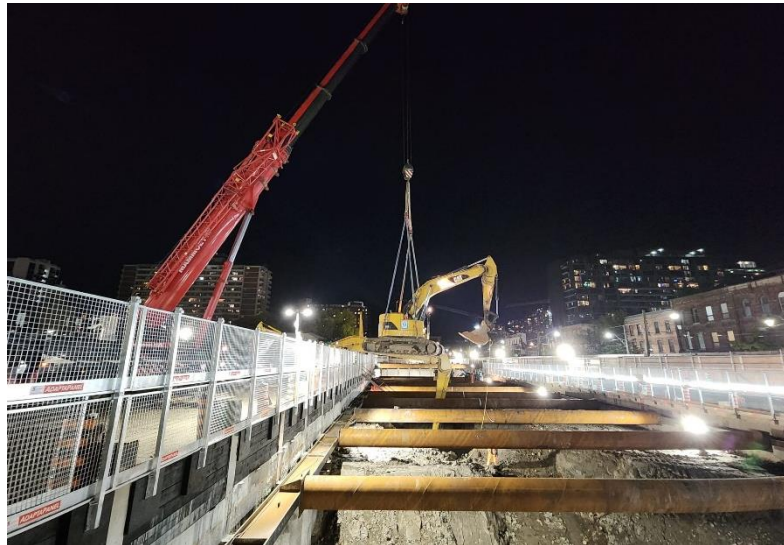
- Treat the presenters and participants with respect and understanding
- Acknowledge and appreciate the diversity of individuals and their situations
- Refrain from supporting or engaging in any form of discriminatory behaviour
- To respect the privacy of CLC members, our employees and contractors, recording the CLC by any means is not permitted.

**Metrolinx is committed to fostering a safe and respectful environment.
We encourage respectful and constructive communication.**

Safety Moment – Site Illumination

Safety and Security Good lighting helps **prevent accidents** if crew need to work within the site or access to the site is required after hours.

It also **discourages theft, vandalism, and unauthorized entry** because a well-lit site is less appealing to trespassers.



Rope lighting along the shaft south wall (Queen St E)

Hazard Visibility: Construction sites are full of potential hazards – trenches, equipment, uneven ground. Proper lighting ensures anyone entering or carrying out work in the site (security, inspectors, emergency responders) can clearly see and avoid dangers.

Emergency Access: If emergency services need to get onto the site at night, lighting helps them move around safely and respond more effectively.

Regulatory Compliance: Some jurisdictions require minimum lighting levels on construction sites at all times as part of workplace safety regulations.

Protection of Work in Progress: Adequate lighting can also help surveillance cameras capture clear images, protecting against damage to partially completed work or materials stored onsite.

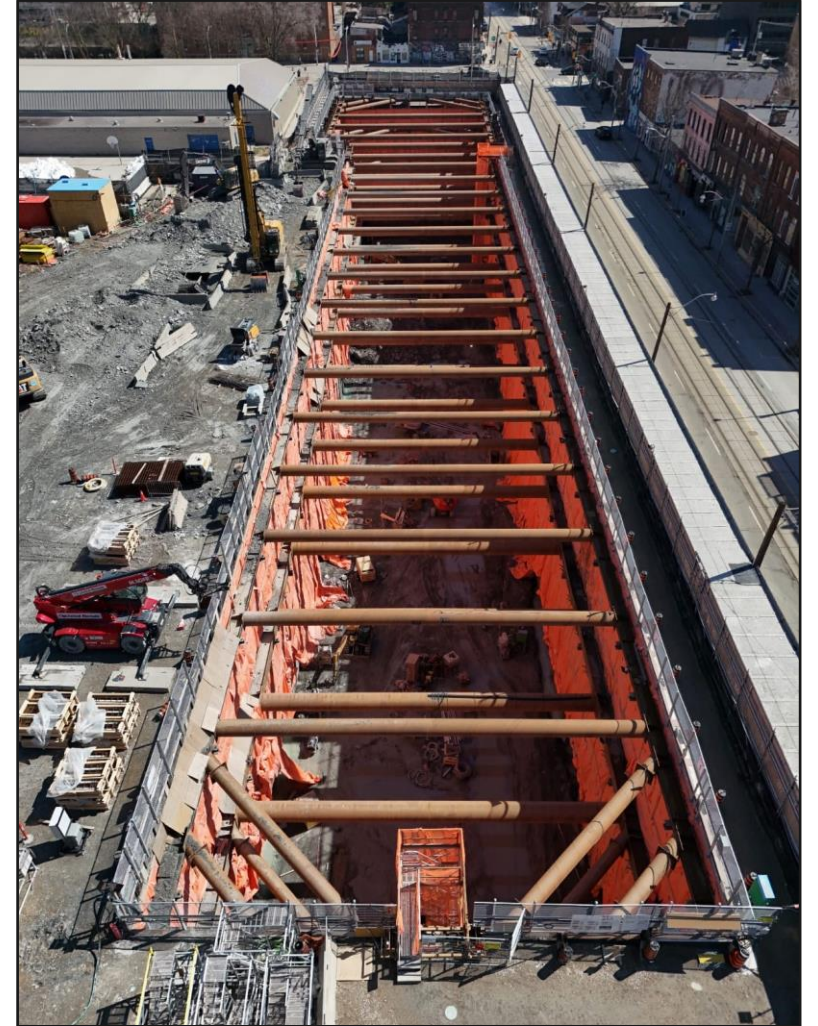
Construction Update

Shaft excavation at approximately 22 metres looking west



EXCAVATION PROGRESS

- Ongoing **excavation** is underway with crews removing soil and rock to shape the underground station space, where the future Ontario Line tunnels and station platforms will be.
- As excavation progresses, crews will install support systems to stabilize the shaft and prepare for the future station construction.
- The **tower crane** platform installation is progressing. The tower crane will facilitate movement of materials and equipment within the site. This ensures a safer and more efficient construction process. Equipment and materials will not be transported over any property.



View of the struts and walers system looking east

EXCAVATION PROGRESS

Station excavation

- Expected completion Summer 2025
- Total depth of approx. 32 metres

What's Next?

What are **permanent works**? Construction now shifts from temporary enabling works (site set-up, utilities relocation, excavation support and ground improvements) to building the permanent subway structure.

Expected start immediately following completion of the excavation program in Summer 2025.

Permanent Works first steps

- **Waterproofing system:** Permanent waterproofing membranes applied before structural pours to the existing walls.
- **Base slab construction:** The first structural slab that forms the base of the station box.



Excavation at 20 metres looking east at Moss Park site

Upcoming Work

EIGHT WEEK LOOK-AHEAD: May 15 – July 10, 2025

#	Activity	Expected Start	Expected Duration	Impact	Hours of Work	Mitigations
1	Rock excavation wall anchors & shotcrete	Ongoing	3 weeks	Vibration, noise, air quality	7:00 a.m. to 11:00 p.m. (Monday to Friday with some Saturdays)	Noise wall, hoarding. Dust mitigation includes misting, sweeping. Erosion and sediment control.
2	Tower crane foundation	Ongoing	4 weeks	Minimal noise, air quality	7:00 a.m. to 11:00 p.m. (Monday to Friday with some Saturdays)	Noise wall, hoarding. Dust mitigation includes misting, sweeping. Erosion and sediment control.
3	Base slab construction	July 2025	Six months	Minimal noise, air quality	7:00 a.m. to 11:00 p.m. (Monday to Friday with some Saturdays)	Noise wall, hoarding. Dust mitigation includes misting, sweeping. Erosion and sediment control.
4	Waterproofing membrane application	July 2025	18 months	Minimal noise, air quality	7:00 a.m. to 11:00 p.m. (Monday to Friday with some Saturdays)	Noise wall, hoarding. Dust mitigation includes misting, sweeping. Erosion and sediment control.

*Note: All dates and times are subject to change as construction planning progresses

2025 CONSTRUCTION LOOK-AHEAD

Timing	Activity	Location	Details and Purpose
Spring	Ongoing rock excavation & hauling	Within the site and along designated haul routes.	Removing large volumes of material from the station shaft to build a new subway platform underground. Dump trucks and various excavators will be used to complete this work.
Summer	Start of permanent works: invert slab pour, and installation of waterproofing membrane	Full shaft surface area.	Installation of waterproof membrane to prevent leaking into the new station. Installation of steel reinforcement and concrete pour to construct the new structural framework of Moss Park Station.
Summer	Tower crane installation	Moss Park	Completion of tower crane foundation and tower crane erection.
Fall/Winter	Lining wall & interior elements	Moss Park	After invert slab completion, construction of lining wall (outer walls) and interior elements will commence level per level.

*Note: All dates and times are subject to change as construction planning progresses

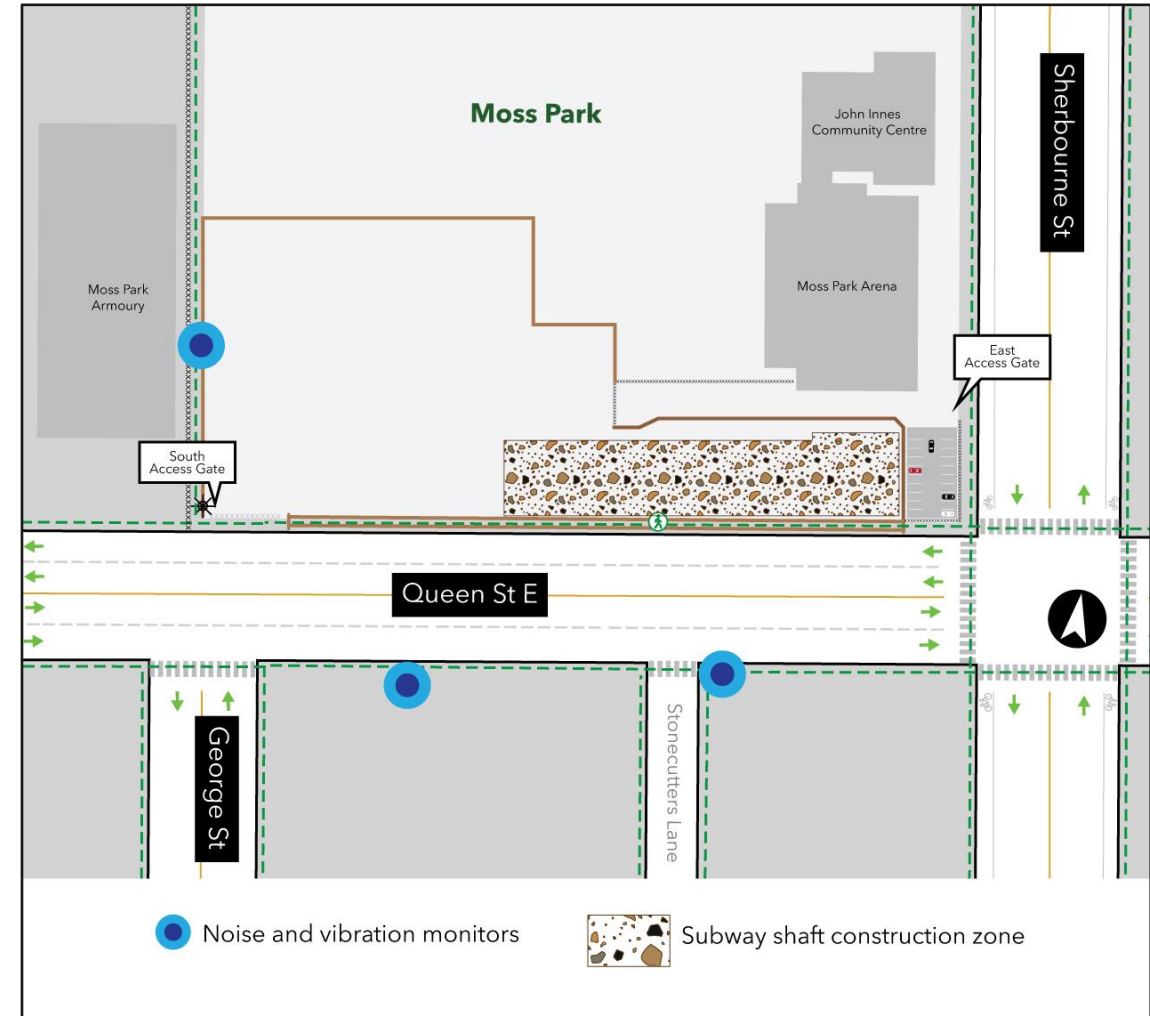
Noise & Vibration Exceedances Reporting Moss Park

April 2025

Noise and Vibration Monitoring Update

April 2025

- Noise and vibration monitors are placed closest to locations classified as major works (station shaft work zones). See map.
- **OTG construction activities did not exceed targeted vibration or noise levels in April.**
- Exceedances unrelated to Ontario Line Moss Park construction are excluded from the tables.



Discussion

KEEPING YOU INFORMED

Metrolinx will keep the community, residents and businesses informed by providing project updates, seeking input and feedback, while addressing questions and concerns effectively and quickly.

Next CLC meeting: June 12, 2025

Connect with us:

- Zahrah Munas Community Engagement Advisor
Zahrah.Munas@metrolinx.com
437-328-5354
- Mark Clancy, Senior Manager, Community Engagement
Mark.Clancy@metrolinx.com
647-449-2857
- Ontario Line at OntarioLine@metrolinx.com

Email: OntarioLine@metrolinx.com
Telephone 24/7 @ 416-202-5100

Follow us on social media:

Twitter / Facebook / Instagram: @OntarioLine



*Scan here to sign up for
the new and improved
Ontario Line
e-newsletter*



*Scan here to explore
Ontario Line CLC
materials*

