

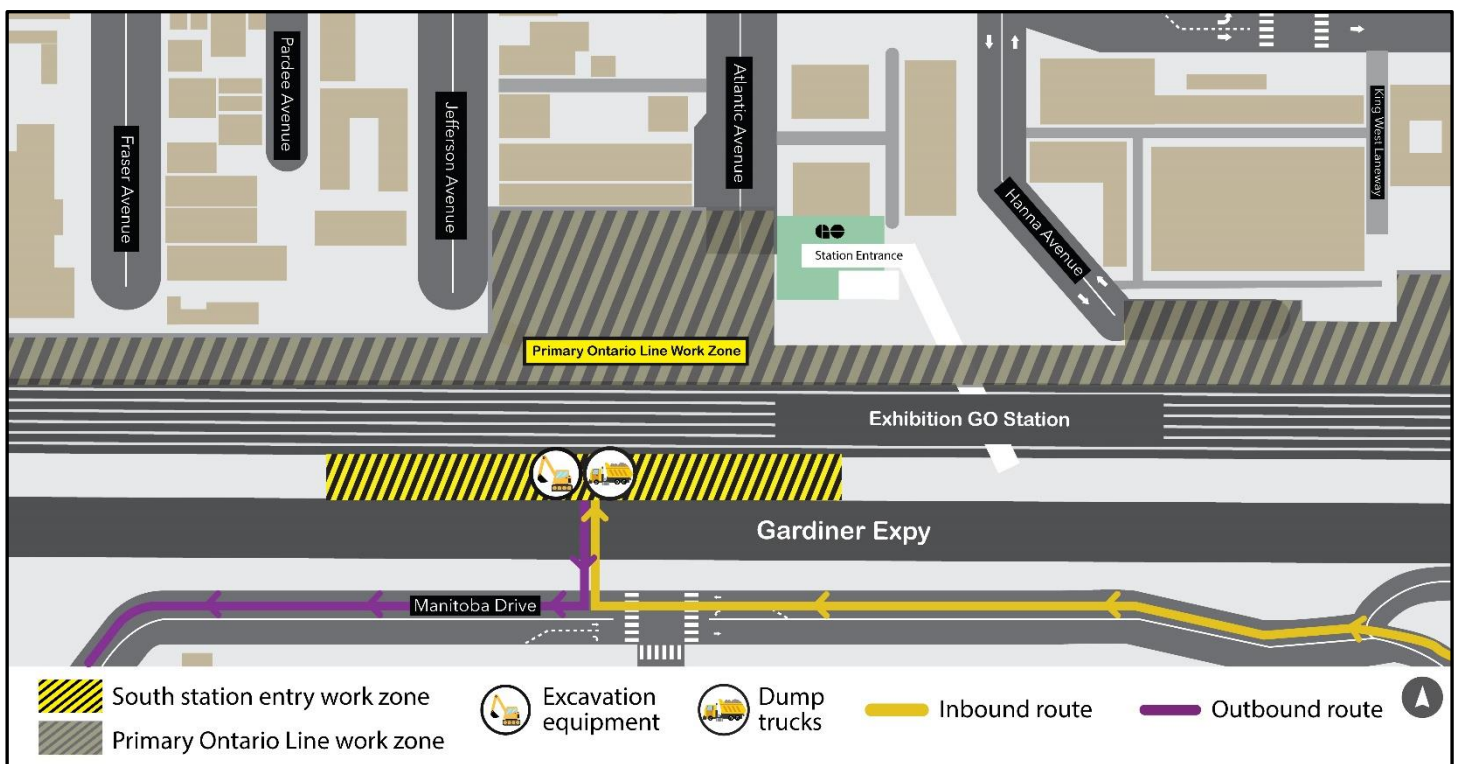
UPDATED: Exhibition Station south entrance construction preparation

Expected Start Date: As early as April 14, 2025

Expected Duration: Through June 20, 2025

Hours of Work: Monday to Friday, from 7:00 a.m. to 5:00 p.m., and from 11:00 p.m. to 5:00 a.m.

Map of work area:



What is happening?

To accommodate the future Ontario Line subway and expanded Exhibition Station, crews will commence work to support a new station entry, by demolishing an existing retaining wall, south of the GO Lakeshore West rail corridor.

Additional foundational and grading works are planned as part of the next phase of construction.

This phase of work will take place west of the existing Exhibition GO Station entrance, and north of the Gardiner Expressway.

What to expect

- During this phase of construction crews will use excavators and demolition equipment to prepare the site for future construction supporting the Ontario Line and Exhibition Station.
- Trucks entering the site will travel from Lakeshore Boulevard West to Strachan Avenue northbound and enter the Exhibition Place grounds via Manitoba Drive, and turning onto Manitoba Drive westbound, and then into the work site, noted on the above map.
- Trucks exiting the site will travel westbound on Manitoba Drive, towards Princes' Boulevard, then use British Columbia Road westbound, turning on to Lakeshore Boulevard West westbound then entering the Gardiner Expressway.
- Flag personnel will be in place to ensure vehicle and pedestrian safety, and customer access to Exhibition Place and Liberty Village through Exhibition GO will be maintained, including the pedestrian bridge over the trail corridor without impacts.
- Work will occur Monday to Friday in two shifts, from 7:00 A.M. to 5:00 P.M. and overnight from 11:00 P.M. to 5:00 A.M.
- There are no expected impacts to GO Train operations or service.
- Work may be postponed or re-scheduled due to unforeseen circumstances.
- All necessary construction permits have been obtained.
- Learn more about the measures we take to keep communities safe as we build more transit connections: [metrolinx.com/KeepingCommunitiesSafe](https://www.metrolinx.com/KeepingCommunitiesSafe)
- For more information about upcoming station work please see [metrolinx.com/Ontarioline](https://www.metrolinx.com/Ontarioline) or sign up for the e-newsletter.

About the Ontario Line

- 15.6-kilometre subway line that will make it faster and easier to travel within Toronto and beyond.
- 15 stops and more than 40 connections to other transit, including GO train, subway, LRT, streetcar, and bus lines.
- Less than 30 minutes from one end of the line to the other.
- 28,000 fewer cars on the road each day.

Contact us:

Call us 24/7 at: [416-202-5100](tel:416-202-5100)

Write to us at: ontarioline@metrolinx.com

Find us on X, Facebook, and Instagram:

[@ontarioline](#)

Visit the website: www.metrolinx.com/ontarioline

Visit our community offices:

770 Queen Street East (near Queen & Broadview)

General hours:

Mondays, Tuesdays, & Fridays: 9:00 a.m. - 5:00 p.m.

Wednesday: 1:00 p.m. to 6:00 p.m.

Thursday: 10:00 a.m. to 6:00 p.m.

Thorncliffe Park:

East York Town Centre

45 Overlea Blvd., Toronto, ON M4H 1C3

Unit 153 (across from the Rogers store)

General hours:

Monday - Friday, 9 a.m. - 5 p.m.