



Eglinton Crosstown West Extension Advanced Tunnel Community Liaison Committee (CLC) Meeting #9

Agenda

1. Land acknowledgement
2. Safety moment
3. Director's message - WEC
4. Safety milestone / Quality achievements
5. Tunnel construction update
6. Surface construction update
7. Public engagement
8. Questions
9. Appendix

Land acknowledgement

Metrolinx acknowledges that we connect communities by building and operating transit within the traditional lands of the Anishinaabe, the Haudenosaunee and the Huron-Wendat peoples, for whom these lands continue to have great importance.

Treaties between First Nations and governments cover these lands, and the promises contained in these Treaties remain relevant to this day.

Metrolinx and its employees are committed to understanding the history of these lands and the continued impacts of colonization and take responsibility for actions to advance reconciliation.

Metrolinx will continue to seek the knowledge, expertise and experience of Indigenous partners and commits to doing business in a manner that is built on a foundation of trust, respect, and collaboration.

Reconnaissance territoriale de Metrolinx

Metrolinx reconnaît que nous relions les communautés en construisant et en exploitant le transport en commun sur les terres traditionnelles des peuples Anishinaabe, Haudenosaunee et Huron-Wendat, pour qui ces terres continuent d'avoir une grande importance.

Ces terres font l'objet de traités entre les Premières Nations et les gouvernements, et les promesses contenues dans ces traités demeurent pertinentes à ce jour.

Metrolinx et ses employés s'engagent à comprendre l'histoire de ces terres et les impacts continus de la colonisation, et assument la responsabilité des actions visant à faire progresser la réconciliation.

Metrolinx continuera à rechercher les connaissances, l'expertise et l'expérience de ses partenaires autochtones et s'engage à mener ses activités d'une manière qui repose sur la confiance, le respect et la collaboration.

Safety moment

Major works for the Eglinton Crosstown West Extension (ECWE) are winding down, however, trucks, machinery, and equipment are still operating in many areas along the Eglinton Avenue West corridor.

Staff are trained to ensure the safe movement of vehicles and equipment in the area.

Everyone has a role in safety to play.

Please obey construction signage in the area and cross at designated crosswalks.

Exercise caution while traveling and commuting in the area.



CAUTION!

Construction equipment and vehicles passing through.



Stay alert while in our construction zone.

There's a lot going on while we build your new transit extension.

Director's message - WestEnd Connectors



As demobilization/restoration continues, our teams' core values remain the same. Safety and the quality of our work are key to finishing strong on the project.

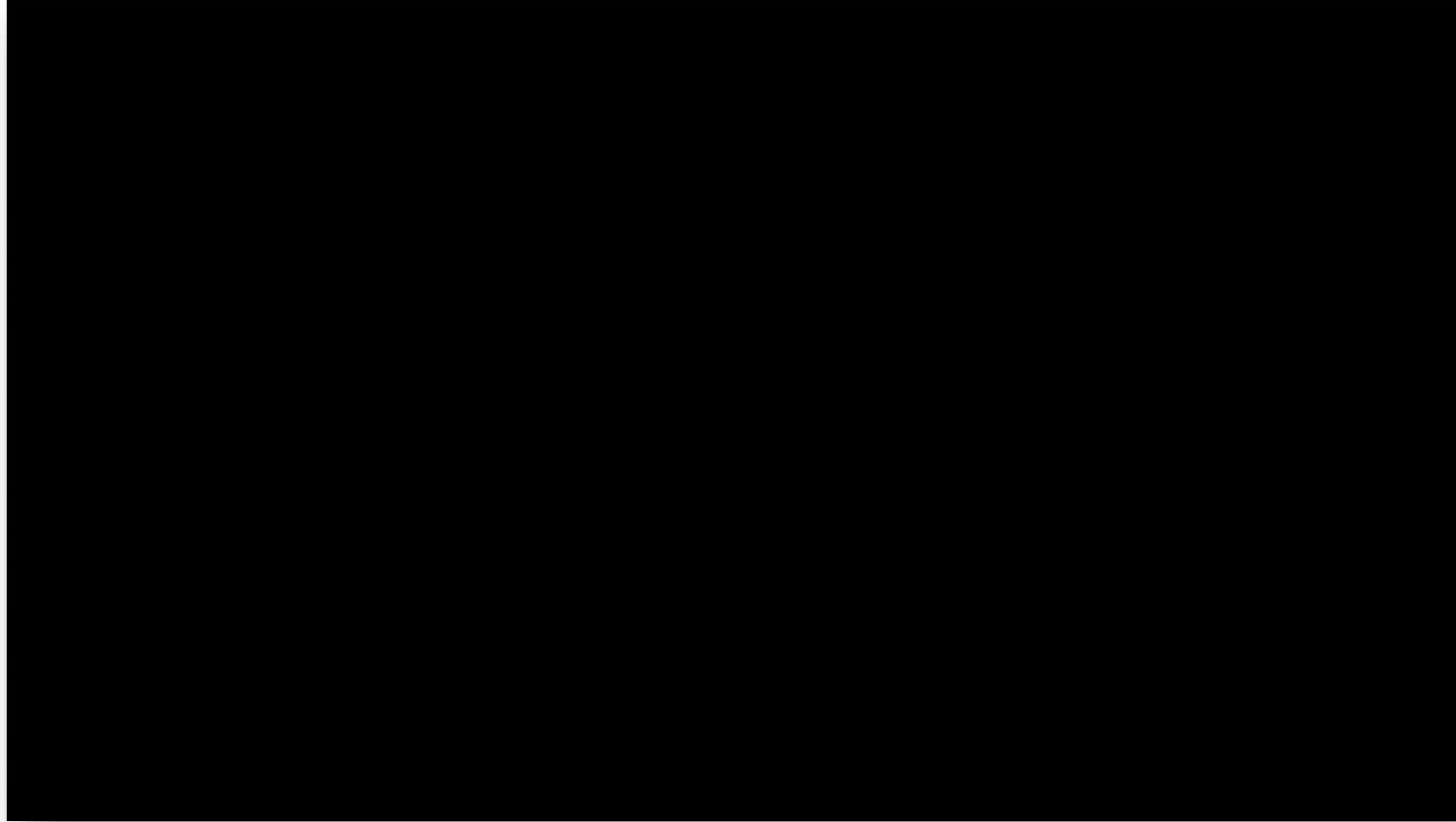
Safety milestone - 1.7 million hours without an LTI



Our team has reached over 1.7 million hours without a Lost Time Injury (LTI). In other words, no time was lost on the project due to an injury.

We are able to continue the project safely and on time through a strong safety culture and continuous improvement.

Quality process



WEC installed more than 52,000 precast concrete tunnel liner (PCTL) segments, forming 7,433 rings to support the tunnels for the Eglinton Crosstown West Extension project.

Check out the video above to see WEC's quality process from the beginning of production to the very last ring in the tunnels.



Tunnel Construction Update

Demobilizing at the launch shaft - Renforth Drive



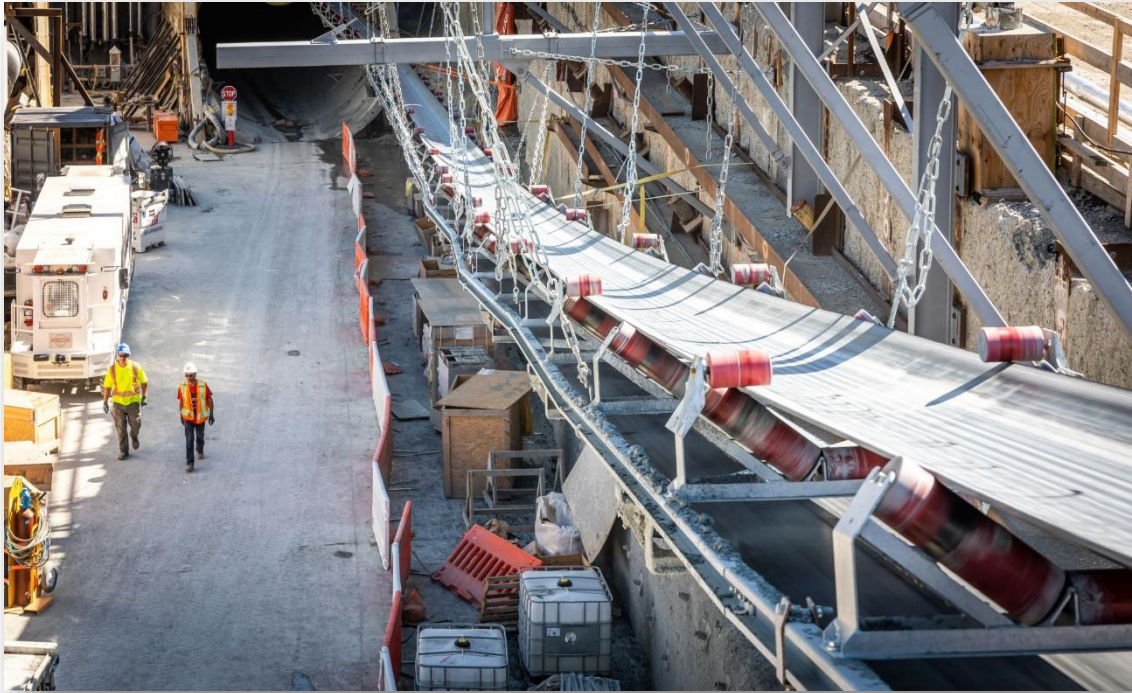
Before



Present

- At the Launch Shaft where Renny and Remy first began tunnelling, crews are focused on removing equipment and have shipped all tunnel boring machine parts back to Germany.
- The muck pits are currently being demolished as there is no further use for them.

Demobilizing at the launch shaft - Renforth Drive



- Our team has completed the disassembly of the conveyor belt system.
- The conveyor belt system, a total of 12.6 km in length, was used to remove the soil and rock from the tunnels and moved up to 500 tonnes of material per hour.

Inside the tunnels - Renny and Remy



- Minor works including repairs, maintenance and cleaning are ongoing in the tunnels.

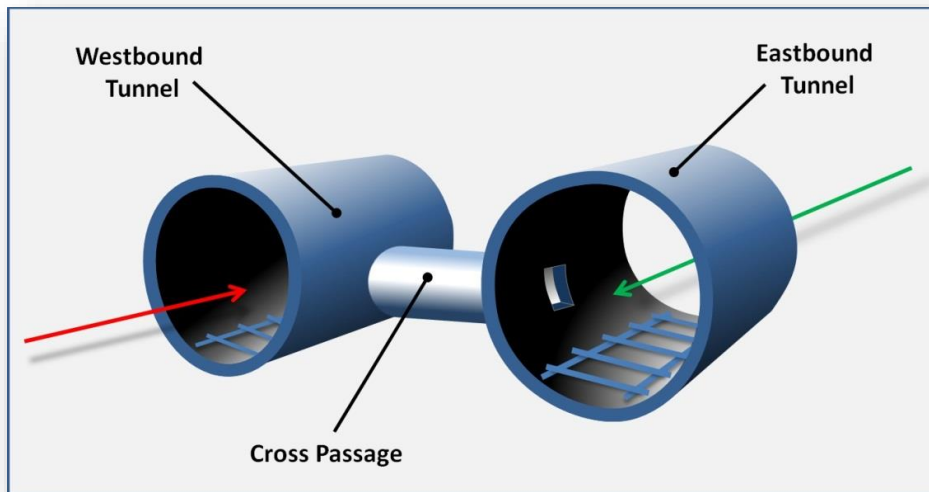
Cross passage construction

A cross passage (CP) is a small passageway built to connect the eastbound and westbound tunnels for maintenance and/or emergency purposes.

This scope of the project will have nine cross passages along the Eglinton Avenue West corridor.

Work for the first cross passage at Renforth, "CP-10" started on May 15, 2023 - slightly ahead of schedule.

While many other projects build cross passages after the TBMs complete their digging, our team's methods, equipment and expertise allowed us to build them during TBM operation.

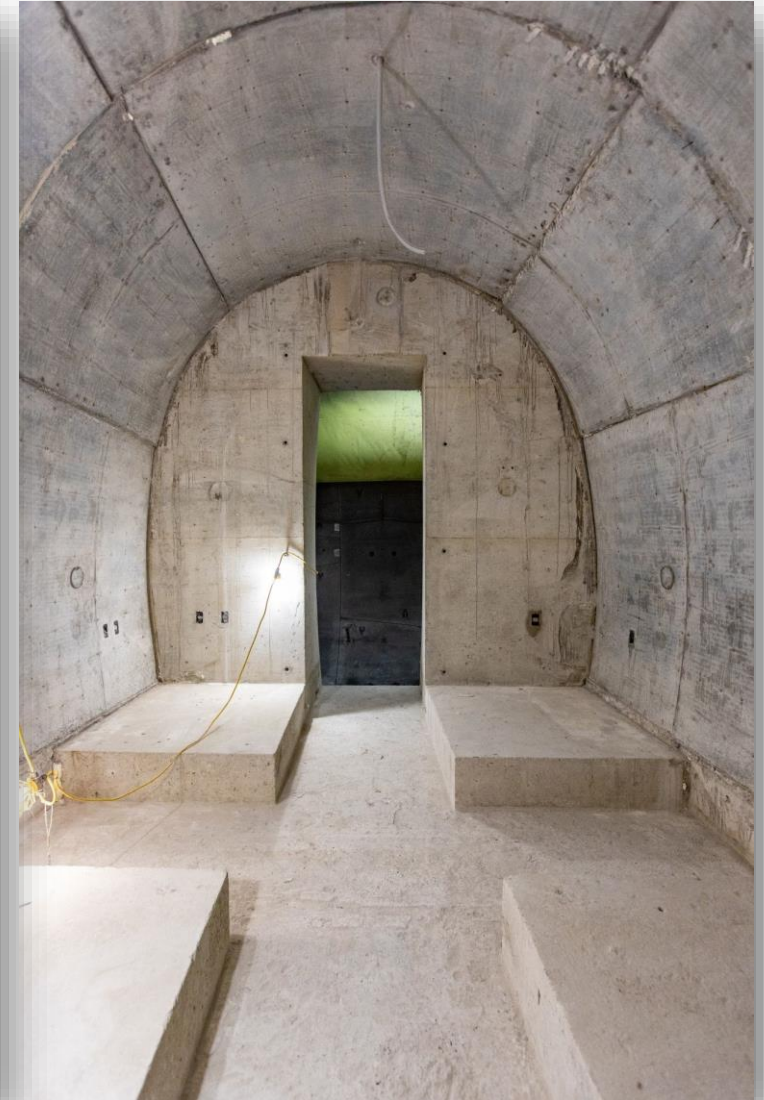


Cross passage construction progress - Final lining completed!



100% Completed

- Work for CP-10, CP-9, CP-8 and CP-7 began in May 2023 and was completed in December 2023.
- Work for CP-6, CP-5, CP-4, CP-3 and CP-2 began in February 2024 and was completed in November 2024.



Headwall overview

Future stations, Emergency Exit Buildings (EEBs) and additional headwalls:



Martin Grove



Kipling



Islington



Royal York



Martin Grove



Kipling



Islington



Royal York

Headwall overview

Future stations, Emergency Exit Buildings (EEBs) and additional headwalls:



EEB #3 (Wincott Drive)



EEB #2 (Russell Road)



Additional headwall (Russell Rd)



Additional headwall (Wincott Dr)



EEB #3 (Wincott Drive)



EEB #2 (Russell Road)



Additional headwall (Russell Rd)



Additional headwall (Wincott Dr)



Surface Construction Update

Light Rail Transit (LRT) portal - Scarlett Road



- The LRT portal, previously known as extraction shaft, is where the light rail vehicles will transition between the tunnel and the elevated guideway.
- This site is also where the TBMs finished digging and then dismantled and removed from the ground through an extraction shaft.
- Construction for the extraction shaft/portal began in winter 2022 and the final structure was completed in October 2024.

Extraction shaft and portal - Scarlett Road



Public engagement

- Resident and commuter engagement, pop-up events, and canvassing have been conducted across the Eglinton Avenue West corridor since 2021. Community members and residents can provide feedback directly to the team and have project questions or concerns answered in person.
- The CLC is another form of public engagement to help bring more voices to discussions about the project.

In 2024, the ECWE Communications and Community Engagement team has:

- Conducted **15** community pop-up events
- Canvassed **500+** houses
- Spoken with **800+** community members
- Hosted or participated in **11** open houses and community meetings
- **6** minister/councillor tunnel tours and meetings
- **20,000+** community notices distributed to residents

CLC - September 2024

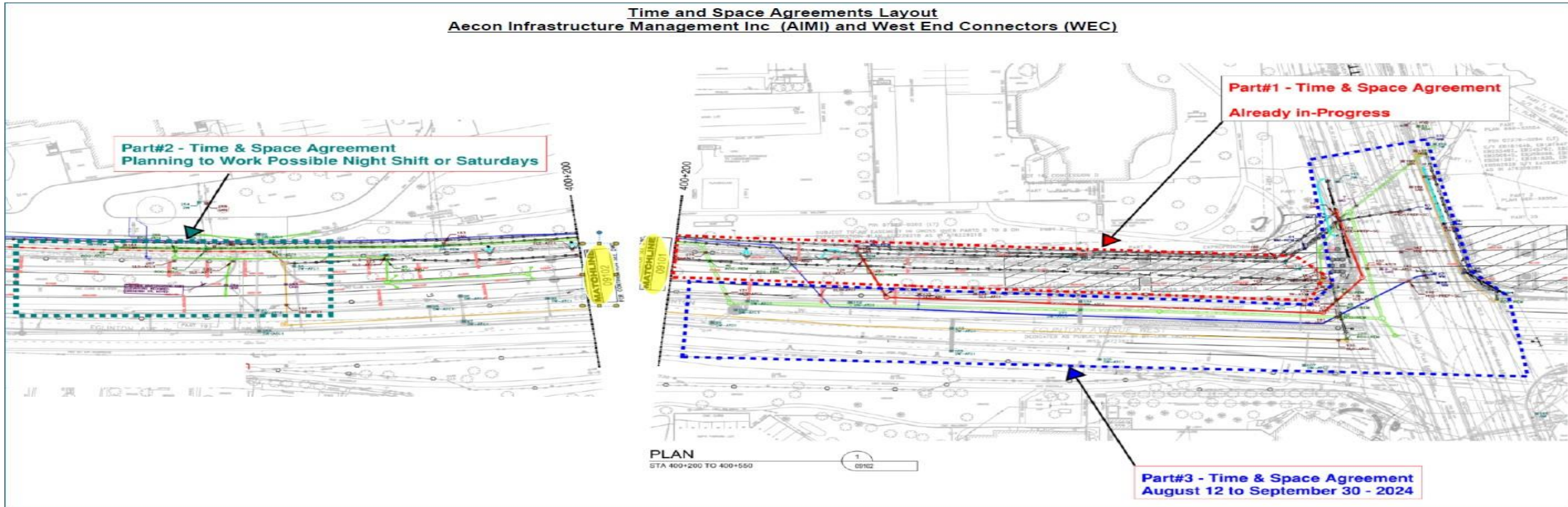


Future public engagement opportunities



- The WestEnd Connectors team will continue to conduct CLCs, open houses, and pop-ups through 2025, updating the community post-tunnelling work.
- WEC attends additional Metrolinx community engagement events to provide support and answer tunnelling questions.
- WEC and Metrolinx participate in volunteer work in the Eglinton Avenue West area. For example, North York Harvest Food Bank and community clean-ups.

Work unrelated to WEC - Elevated guideway contract



Description of work: AECON to complete utilities and environmental investigation.

Location: WEC work zone - west of Scarlett Road.

Duration of work: January 6th, 2025 - January 31st, 2025.

Working Timing: AECON will work 7am to 5pm daily under.

Questions?

Appendix

Community Liaison Committee Code of Conduct

Community Liaison Committees (CLCs) are being held quarterly to provide open, two-way communication and sharing of information before and during construction of the ECWE project. A code of conduct will help ensure that discussions are respectful and productive:

- Participate fully and openly in discussions, while also creating an environment where all members are encouraged to contribute and share their views.
- Participate in a respectful manner, including refraining from use of foul language and derogatory comments.
- Keep requested agenda and discussion items within the mandate of the committee.
- Maintain confidentiality of sensitive issues, when requested by participants.
- Represent your community's diverse perspectives and interests.
- Refrain from speaking to the media or engaging on social media regarding their role or any information they obtained as a result of being a member.
- Commit to equity, diversity, overcoming systemic racism and supporting the participation of the whole community regardless of race, gender, class, sexuality, age or ability.



Renforth to Scarlett tunnel timeline

Timelines are subject to change.

