

Eglinton Crosstown
West Extension

SCARLETT – MOUNT DENNIS

Construction Liaison Committee

November 4th, 2024





AGENDA

Welcome

- Introduction
- Land Acknowledgment
- Safety Moment
- CLC Code of Conduct
- Action items
- Update: Terms of reference

Presentation

- Construction updates
- Virtual walking tour
- Community engagement

Questions & Answers / Discussion

LAND ACKNOWLEDGMENT



Let us take a moment to acknowledge we are on lands that have been, and continue to be, home to many Indigenous Peoples including the Anishnabeg, the Haudenosaunee and the Huron-Wendat peoples.

We are all Treaty people. Many of us have come here as settlers, as immigrants or involuntarily as part of the trans-Atlantic slave trade, in this generation, or generations past.



We acknowledge the historic and continued impacts of colonization and the need to work towards meaningful reconciliation with the original caretakers of this land.

We acknowledge that Metrolinx operates on territories and lands covered by many treaties that affirm and value the rights of Indigenous communities, Nations and Peoples.

We understand the importance of working towards reconciliation with the original caretakers of this land.

At Metrolinx, we will conduct business in a manner that is built on a foundation of trust, respect and collaboration.

SAFETY MOMENT

BE AWARE WHILE COMMUTING



Whether you're taking the subway, streetcar, bus or train, safety is paramount. Here are quick tips for a safer rail commute:

- 1.Stay back:** Always remain behind the yellow line while waiting for your vehicle to arrive.
- 2.Mind the gap:** Watch your step and be mindful of the gap between the platform or road and the vehicle.
- 3.Hold on:** Always grip handrails or bars while the vehicle is moving to prevent falls.
- 4.Stay alert:** Be aware of your surroundings and report any suspicious activity or items to transit staff.
- 5.Respect personal space:** Avoid crowding fellow passengers and keep bags clear of walkways to prevent accidents.
- 6.Watch your step:** Be cautious when boarding or exiting, especially in adverse weather or low-light conditions.
- 7.Know your route:** Familiarize yourself with the transit system map and schedule to navigate confidently.

CLC CODE OF CONDUCT



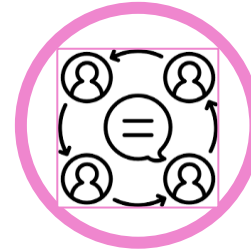
Participate fully, openly and transparently in discussions, while also creating an environment where all members are encouraged to contribute and share their views.



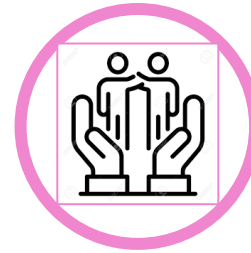
Participate in a respectful manner towards other CLC members by using appropriate language.



Keep requested agenda and discussion items within the **mandate and scope** of the **Construction Liaison Committee**.



Represent their community's diverse perspectives and interests.



Maintain confidentiality of sensitive issues, when requested by participants.



Commit to equity, diversity and inclusion by supporting the participation of the whole community regardless of race, gender, class, sexuality, age or ability.

COMPLETED ACTION ITEMS

- **Metrolinx** to host a separate virtual meeting regarding the Terms of Reference before the next CLC meeting; all will be invited to participate if desired. The Ontario Line Terms of Reference will be sent out for reference.
 - *An update to be provided during this meeting.*
- **Metrolinx** to follow up with the City of Toronto (CoT), TRCA and elected officials to participate in the CLC regarding the next meeting and let them know that their presence has been requested by members.
 - CoT, TRCA, and EO Members have been invited to both CLC meetings.
- **Metrolinx** to notify ENAGB and Turtle Island Carers of Fire before borehole drilling.
 - *For any future works, they will be notified via email, and key members will be added to the newsletter distribution list.*
- **Metrolinx** to provide CLC members with the past City of Toronto motion report requesting the EG be moved.
 - *Link sent in meeting minutes on August 20th, 2024, Please see [2024.IE11.4 - Metrolinx Eglinton Crosstown West Extension Elevated Guideway - Response to the Member Motion MM13.3](#)*
- **Metrolinx** to share specifics on community notices and distribution radius in the next meeting.
 - *Canada Post distribution of construction notices is defined in project agreements and is based on an area of a 500-metre radius of the Works, where the applicable construction activities are set up. In most cases Metrolinx goes above and beyond this radius.*

CONSTRUCTION LIAISON COMMITTEE (CLC) TERMS OF REFERENCE

- **What is a CLC?**

- Construction Liaison Committees (CLCs) provide open, two-way communication and sharing of information before and during the construction of the Eglinton Crosstown West Extension. The CLC will focus on activities generally between Scarlett Road and Weston Road.
- The CLC is not a decision-making body. As an advisory body, the CLC is a forum for all participants to engage, listen and participate. The CLC is a forum for Metrolinx and representatives of the committee to proactively communicate and discuss ECWE construction activities and community impacts in a collaborative and respectful manner.

- **Membership**

- CLC members include representatives from Metrolinx, our construction partners (Strabag & AECON), and from organizations and representatives of the community.

- **Meeting Schedule**

- The CLC will meet bi-monthly for an hour, subject to change based on construction progress and membership availability.
- We will establish a regular meeting time for the CLC, subject to change where appropriate.
- The CLC agenda will be organized with input from the CLC members.

CLC AREA OF FOCUS

This CLC will cover all construction for the future Eglinton Crosstown West Extension Line infrastructure along Eglinton Ave between Scarlett to Mount Dennis Stations.



CONSTRUCTION UPDATES

STRABAG:

Tunnelling

EAST TUNNEL— PILING WORKS

Piling work at the Jane Portal site for the east tunnel is now complete.

A total of 224 piles were installed over the course of 12 weeks!

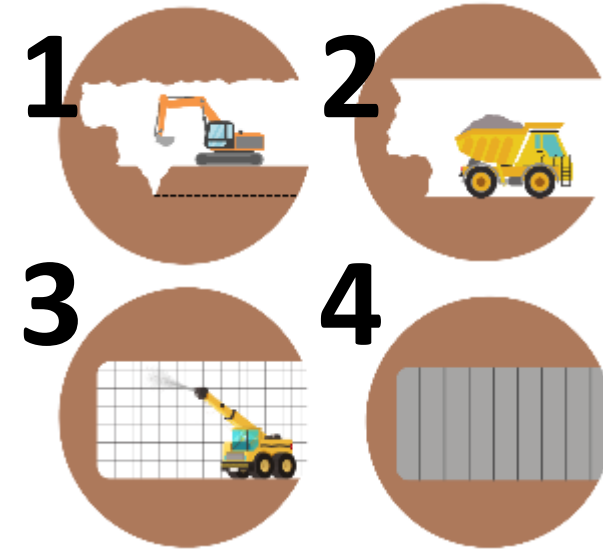


UPDATE ON CURRENT WORKS – EAST TUNNEL

- Excavation work of the east tunnel is expected to begin late 2024 and is anticipated to be complete late 2026.
- Excavation work will be done using the Sequential Excavation Method (SEM).



Jane Portal site – east tunnel



- Excavation work will be a 24/7 operation.
- SEM involves excavating tunnels in small sections to maintain ground stability.
- SEM uses a combination of ground support techniques, like shotcrete and rock bolts, to reinforce each section as it's excavated.

EAST TUNNEL— ACCESS POINTS

Jane Portal - East Tunnel

- Trucks will travel westbound and enter the site via the north lanes on Eglinton Ave.
- The east gate remains the primary entrance and exit for the project site.
- Trucks will travel west through the site and exit through the west gate (Gate B).

A flagger will be stationed at this location to manage the movement of trucks and equipment to Fergy Brown Park and to minimize risks to park visitors, ensure safe truck exits, and maintain a secure boundary between the construction site and the public space.



Jane Portal hauling route

ATC2 CONSTRUCTION LOOK-AHEAD

East Tunnel

Time	Activity	Location	Details & Purpose
Summer to Fall 2024	Site Preparation	Mount Dennis Station Plaza	Fencing, concrete removal works , grading, site equipment delivery and utility relocation - <i>Ongoing</i>
	Cycle track construction	Eglinton Avenue	Completion of cycle track and handover to City of Toronto - <i>Ongoing</i>
Fall 2024 to late Summer 2025	Excavation and tunnelling	Jane Portal	Excavation of the east tunnel - <i>Upcoming</i> Installation for wet utilities - <i>Upcoming</i>
	Support of excavation	Mount Dennis Station Plaza	Piling works to create the structure that will connect the east tunnel to the Mount Dennis Station - <i>Upcoming</i>

AECON:

Elevated guideway

CURRENT WORK

Subsurface Utility Engineering (SUE)

- Subsurface Utility Engineering (SUE) combines civil engineering, surveying, and geophysics to locate underground utilities using vacuum excavation.
- This work helps identify any existing utility infrastructure that could potentially interfere with the design of the elevated guideway construction.



CURRENT WORK

Borehole Drilling

- A borehole is a narrow vertical shaft drilled into the ground to assess soil suitability.
- For the elevated guideway, a 6-inch hole is drilled into the bedrock, ranging from 4 to 36 meters deep.
- Nearly 56 boreholes will be drilled along the alignment.



CURRENT WORK

Temporary Site Fencing

- Fencing on the south side of the elevated guideway project site is complete along north of Eglinton Avenue West, from Scarlett Road to Fergy Brown Park.
- Fencing on the north side of the elevated guideway project site is currently in progress.
- Installation of the fence provides public safety during construction of the elevated guideway project.



Aecon tree removal on Eglinton Avenue

CURRENT WORK

Tree Removal

- To accommodate the construction of the elevated guideway, trees will be removed along Eglinton between Scarlett and the Fergy Brown access road.
- Tree removal is taking place in each section of the project corridor in late fall starting from Emmett to Fergy Brown Park.
- Tree clearing works will last up to four weeks.
- While tree-clearing work is ongoing, erosion and sediment control measures will be implemented.



Site fencing along north of Eglinton Avenue West

EG CONSTRUCTION LOOK-AHEAD

Time	Activity	Location	Details & Purpose
Summer to Fall 2024	Borehole Drilling	Along North of Eglinton Avenue West between Scarlett Road & Jane Street	A narrow vertical shaft drilled into the ground to assess soil suitability - <i>Ongoing</i>
	Subsurface Utilities Investigation	Along North of Eglinton Avenue West between Scarlett Road & Jane Street	Identifies any existing utility infrastructure that could interfere with the design of the elevated guideway construction - <i>Ongoing</i>
Fall 2024 to Spring 2025	Temporary Fencing Installation	Surrounding the project limits	Reduces dust, noise and provides public safety during construction of the elevated guideway project - <i>Ongoing</i>
	Tree Removal	Along Eglinton Avenue West between Scarlett and Fergy Brown Park	Accommodates the construction of the elevated guideway - <i>Ongoing</i>

EG CONSTRUCTION LOOK-AHEAD

Time	Activity	Location	Details & Purpose
Spring 2025	Site Grading & Prep Work	Along North of Eglinton Avenue West between Scarlett Road & Jane Street	Levelling and preparing the site land for the construction of the elevated guideway - <i>Upcoming</i>
	Erosion & Sediment Control	Along North of Eglinton Avenue West between Scarlett Road & Jane Street	Minimizes environmental impact and protects the local environment in the proximity of the construction site - <i>Upcoming</i>
	Caisson Foundation	Near Humber River North of Eglinton Avenue West	Construction of the caisson foundation stabilizes the construction of the columns and track - <i>Upcoming</i>
	Pier & Pier Caps	Near Humber River North of Eglinton Avenue West	Raises the base of the elevated guideway above ground and supports the deck - <i>Upcoming</i>
	Deck	Near Humber River North of Eglinton Avenue West	Finalizes an elevated guideway for the deck to be laid - <i>Upcoming</i>

UPCOMING WORK

Erosion and Sediment Control (ESC)

- ESC measures for the elevated guideway project will include erosion control plans, silt fences and coir logs
- Stabilized construction entrances, and effective drainage systems will be in place.
- This work is done to minimize environmental impact and protect local aquatic and terrestrial environment in the proximity of the construction site.



Example

UPCOMING WORK

Site Grading and Preparatory (Prep) Work

- Ground will be levelled and prepared for construction.
- This involves clearing the construction site, grading the land and compacting the soil for the construction of the elevated guideway.
- Dump trucks, rollers, excavators and grading equipment will be used for site preparation



Example

UPCOMING IMPACTS

Sidewalk closures - Late fall

- The sidewalk along the north side of Eglinton Avenue West will be closed from Scarlett Road to Fergy Brown Park access road until the close of the substantial completion.
- The south sidewalk from Scarlett Road to Fergy Brown Park along Eglinton Avenue West will be maintained for pedestrian movement.

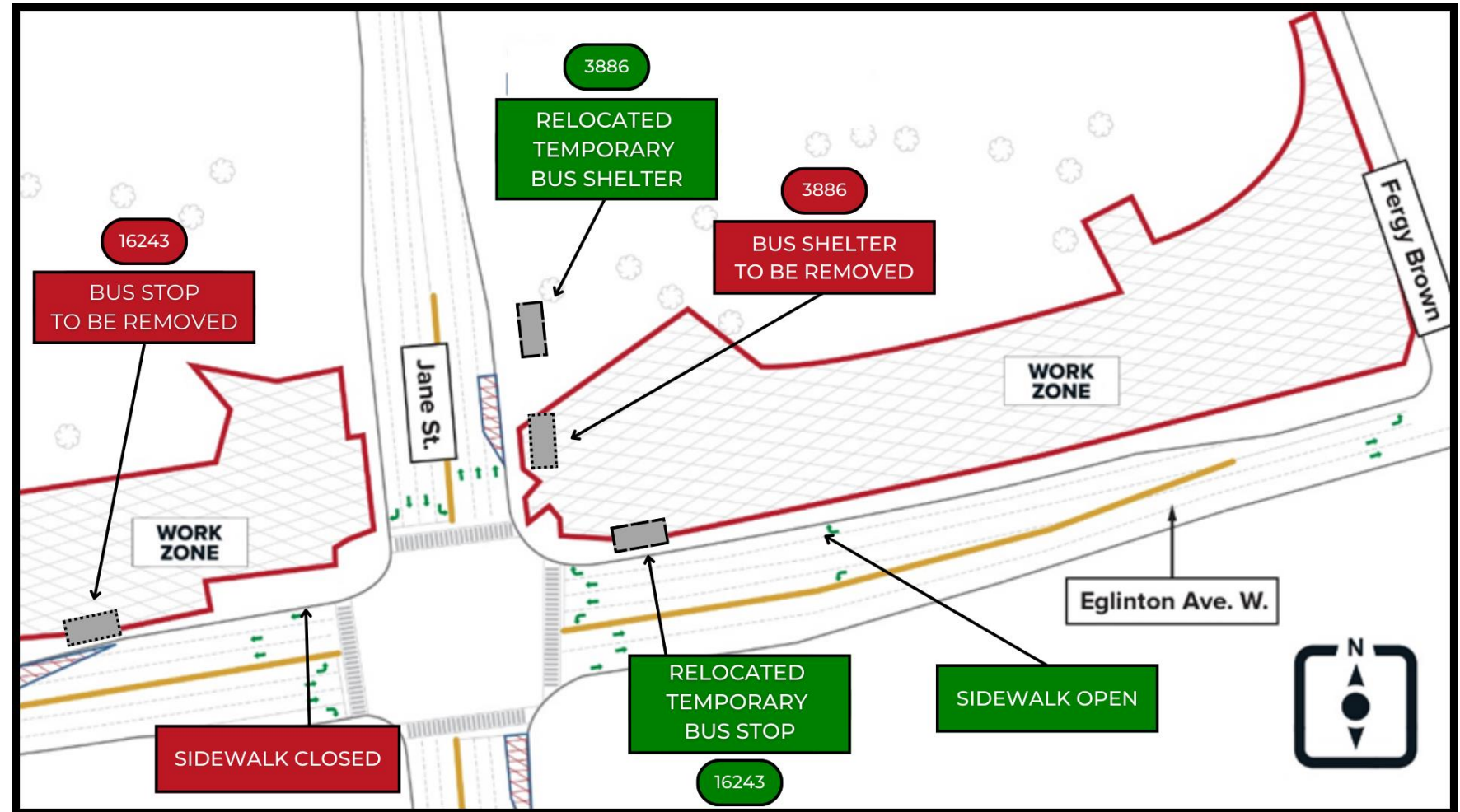
Bus stop relocations- Late fall

- Bus stops / shelters northbound on Jane Street and westbound on Eglinton Avenue West will be shifted.
- Stop #3886 - Northbound on Jane Street will be relocated 4.5 metres north of its current location.
- Stop #16243 - Westbound on Eglinton Avenue West will be relocated 50 metres east from its current location on the Northeast corner of Jane Street & Eglinton Avenue West.

UPCOMING IMPACTS

Bus stop relocations

Relocations will stay in place until the end of the project.



MANAGING IMPACTS TO THE COMMUNITY

WHAT TO EXPECT

During excavation work, the community can expect:

- Noise and dust from excavation equipment, loading of excavated material onto trucks.
- Equipment used during this operation includes cranes, excavators, dump trucks concrete pumps, and delivery trucks.
- Several trucks entering and leaving worksites daily, following a specified route. Trucks will use defined routes, and workers on site will work within dedicated timeframes for excavation activities.



CONSTRUCTION IMPACTS AND MITIGATION

Construction Impacts	Mitigation
Safety	Pedestrian detours around heavy construction areas; adjustment of access to public parks
Noise and Vibration	Noise and vibration threshold monitoring
Lane Closures	Signs, flag persons, detours
Local Businesses	Business continuity plans such as advertising, maintaining access, and buying locally throughout the project
Mud Tracking (from project site onto sidewalk or street)	Street sweepers using vacuum suction and mud mats will be used
Dust and Air Quality	Dust suppression will be used on regular basis – watering the grounds regularly to keep the dust suppressed, which helps maintain air quality.
Construction Debris	Daily housekeeping to prevent buildup of construction waste

VIRTUAL WALKING TOUR

COMMUNITY ENGAGEMENT

COMMUNITY ENGAGEMENT

Construction notices and updates

- Prepared and distributed before new and impactful construction work.

CLC meetings

- Regular committee meetings to discuss upcoming works and share information.



In-person and virtual consultation with residences and businesses

- Pop - ups
- Open houses
- Working groups

CONTACT US

Metrolinx will keep the community, residents and businesses informed by providing project updates, seeking input and feedback, while addressing questions and concerns effectively and quickly.

Stay connected:

EglintonWest@metrolinx.com
24/7 call # 416-202-8001

Follow us on social media:
Twitter / Facebook / Instagram
@ EglintonWestEXT



Questions?

