

Ontario Line

# Osgoode Construction Liaison Committee

May 28, 2025





# Agenda

## Welcome (5 minutes)

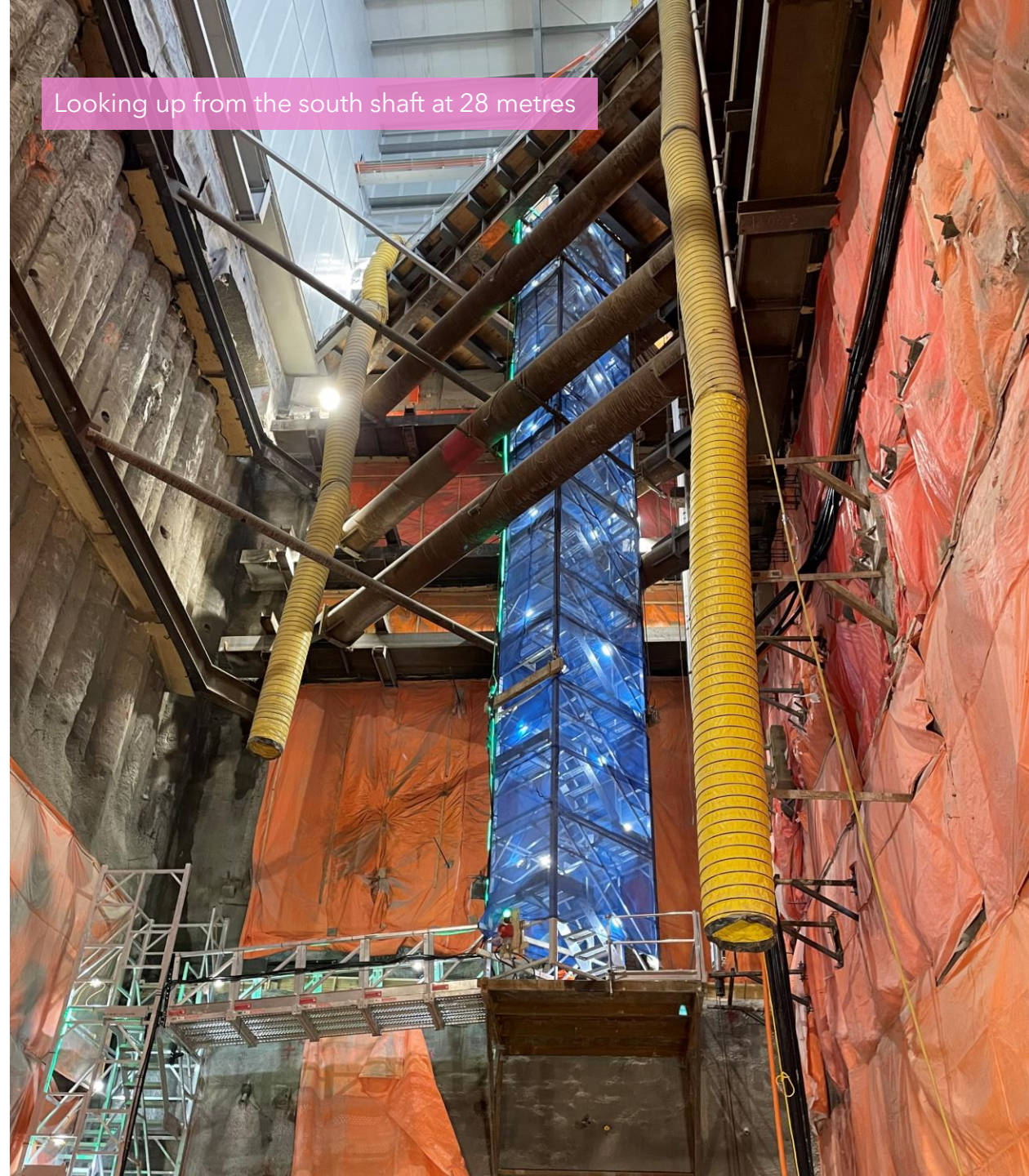
- Introduction
- Land acknowledgement
- Safety moment
- Review of action items

## Presentation (25 minutes)

- Construction updates

## Q+A and Discussion (30 minutes)

- Keeping you informed



Looking up from the south shaft at 28 metres

# LAND ACKNOWLEDGEMENT

---

Metrolinx acknowledges that we connect communities by building and operating transit within the traditional lands of the Anishinaabe, the Haudenosaunee and the Huron-Wendat peoples, for whom these lands continue to have great importance.

Treaties between First Nations and governments cover these lands, and the promises contained in these Treaties remain relevant to this day.

Metrolinx and its employees are committed to understanding the history of these lands and the continued impacts of colonization and take responsibility for actions to advance reconciliation.

Metrolinx will continue to seek the knowledge, expertise and experience of Indigenous partners and commits to doing business in a manner that is built on a foundation of trust, respect, and collaboration.

# Session Guidelines

We greatly appreciate the community members who are here to take part in this public session.

To ensure that everyone can contribute to a positive and safe community experience, all participants shall adhere to the following *Code of Conduct*:

- Treat the presenters and participants with respect and understanding
- Acknowledge and appreciate the diversity of individuals and their situations
- Refrain from supporting or engaging in any form of discriminatory behaviour
- To respect the privacy of CLC members, our employees and contractors, recording the CLC by any means is not permitted.

**Metrolinx is committed to fostering a safe and respectful environment.**

**We encourage respectful and constructive communication.**



## STAYING SAFE AROUND THE SITE - CONSTRUCTION & TRAFFIC SAFETY

As the work continues to deliver the Ontario Line, **safety protocols** have been implemented to keep our community and our workers safe.

### 24/7 Monitoring

- Noise and vibration monitoring devices are placed for active tracking of impact to ambient noise levels

### Truck Safety:

- Traffic control persons at gates direct trucks with signs, signals, and verbal instructions
- Safety gates control vehicle, pedestrian, cyclist, and transit flow
- Radio communication coordinates vehicle movements
- Ongoing safety briefings for delivery truck drivers

### Site Safety:

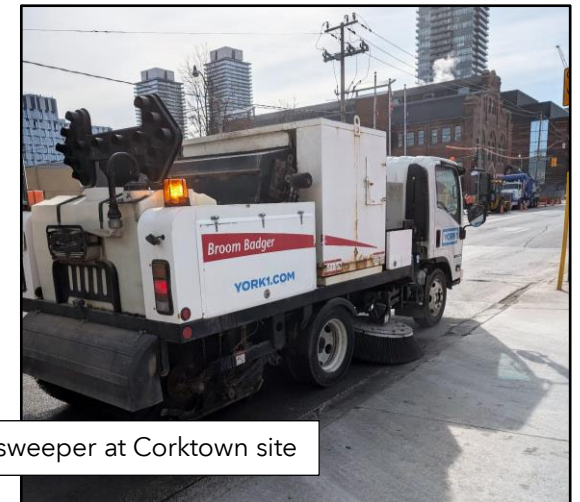
- Street sweepers and wheel cleaning used as needed
- Additional site lighting for visibility and safety
- Clear signage for detours and hazards
- Dust control measures such as water spraying to protect air quality
- Regular safety inspections to identify and correct hazards

### Equipment Safety:

- Hoist alarms when loads are being lifted and lowered into the shaft or within the site
- Back-up alarms when site vehicles including heavy machinery are reversing



Traffic control person

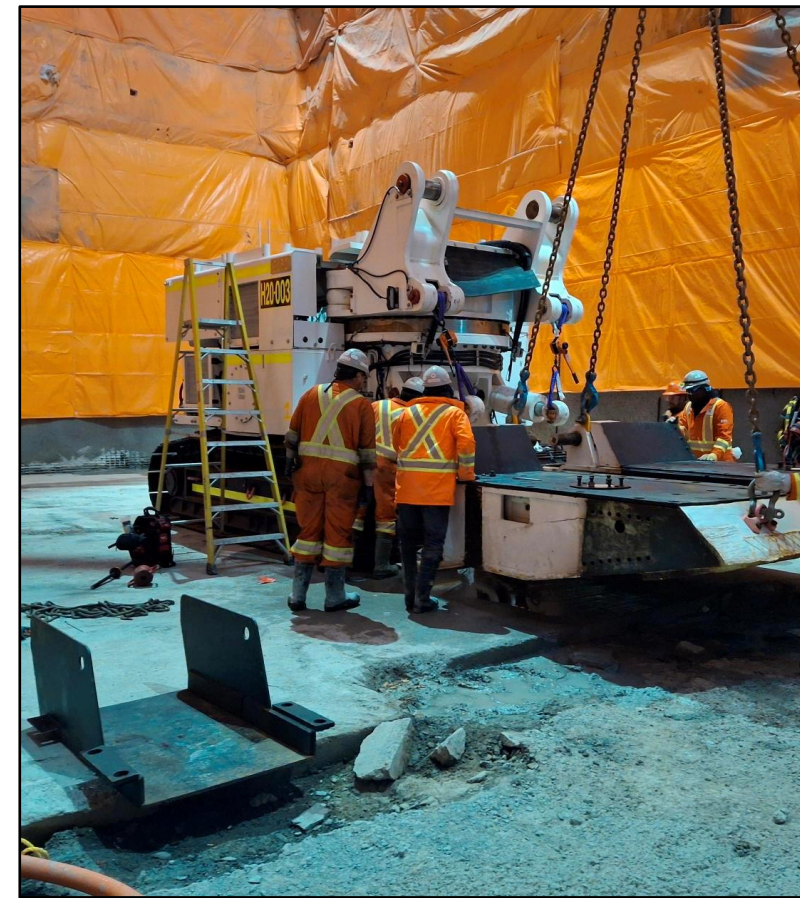
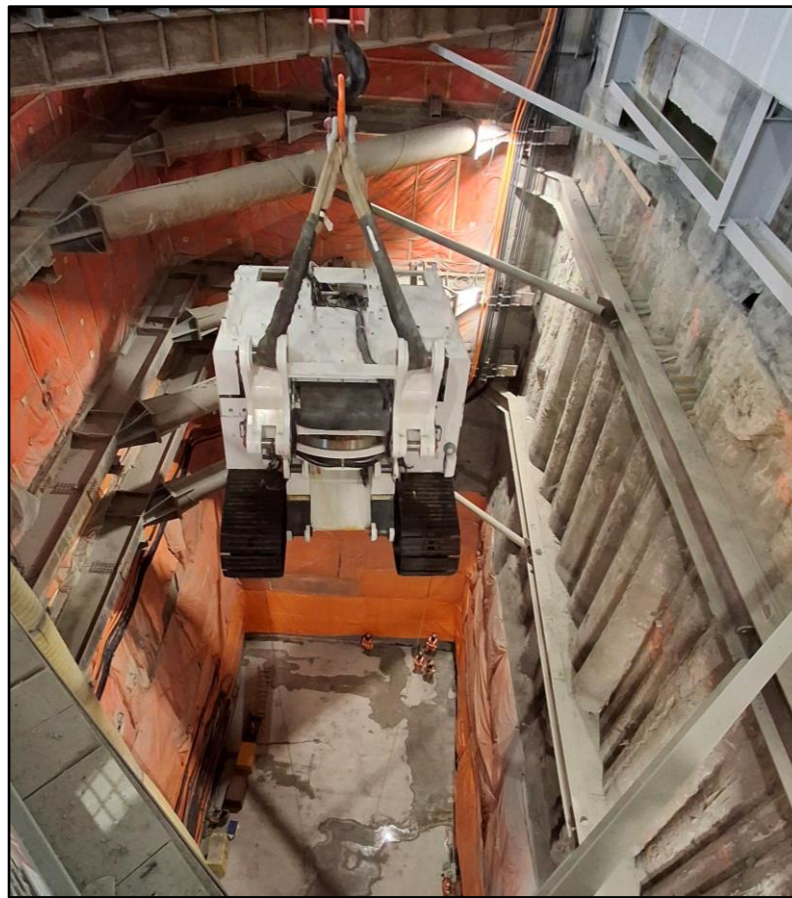


Street sweeper at Corktown site

# Osgoode Construction Update



## CURRENT WORKS: FUTURE OSGOOD SOUTH STATION SITE



Roadheader delivery and assembly at the future Osgoode south site



## UPCOMING WORKS: FUTURE OSGOOD SOUTH STATION SITE

### Cavern excavation

- Crews will soon be excavating the station cavern, where the future station platform and tunnel will be underground between the north and south station sites.
- Specialized machinery including two **roadheaders** and a **concrete spraying robot** will be used as part of a sequential excavation method, removing soil, rock section by section to create this space underground.
- The tunnel face is divided in sections excavated and supported in sequence in order to control the ground movements.
- This construction cycle must be continuous in order to control the ground movement and will be occurring on a 24-hour work shift, seven days a week.
- In the future, **tunnel boring machines will move through the cavern at the station site.**
- Work will be in a 24 hour/day, 7-day **continuous cycle.**
- **Expected** completion date, June 2026



Roadheader machine removing rock to create the cavern at the future Queen-Spadina station site.



The **south** site looking from above the acoustic shelter





## UPCOMING WORKS: FUTURE OSGOODE SOUTH AND NORTH STATION SITES

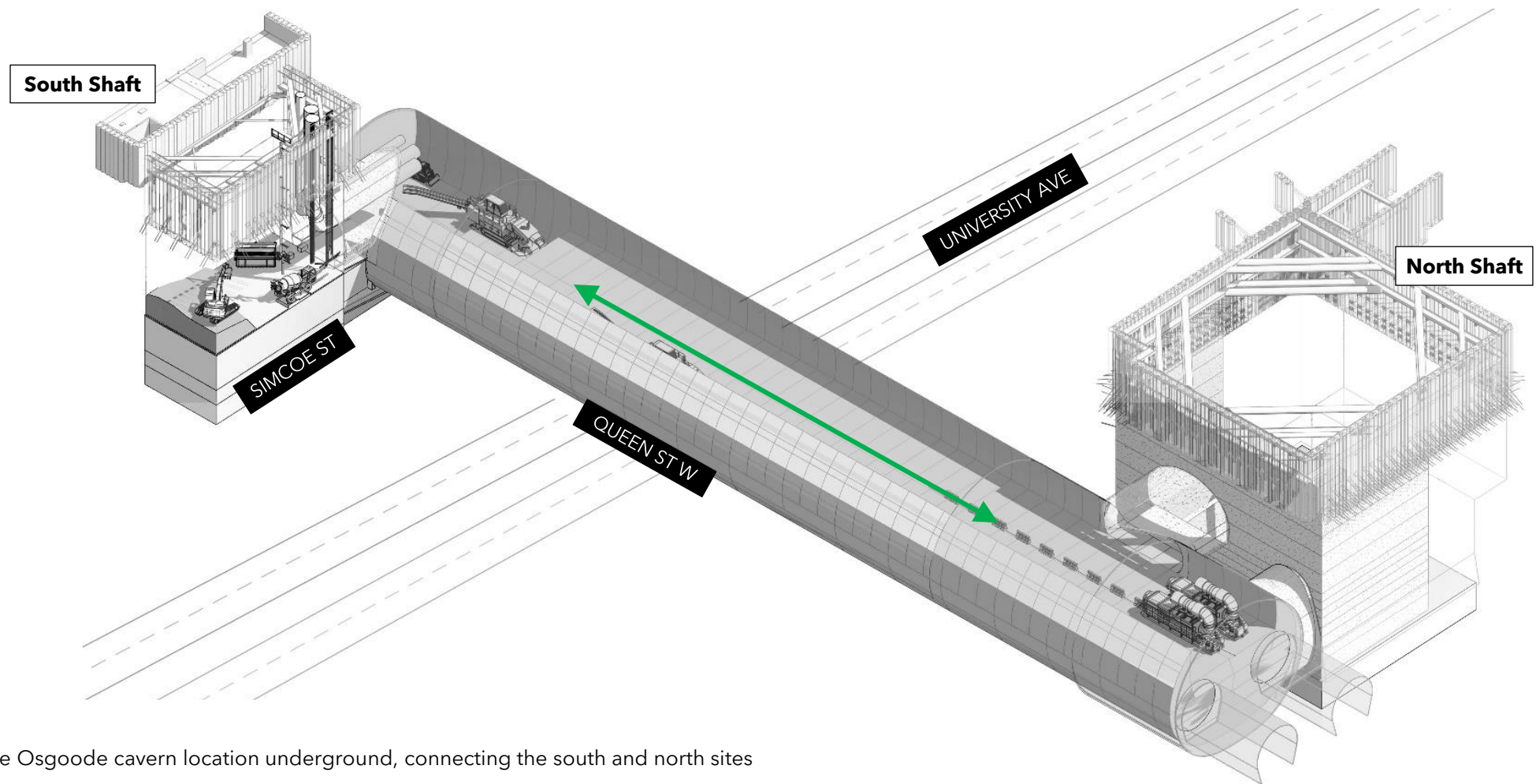


Diagram of the future Osgoode cavern location underground, connecting the south and north sites

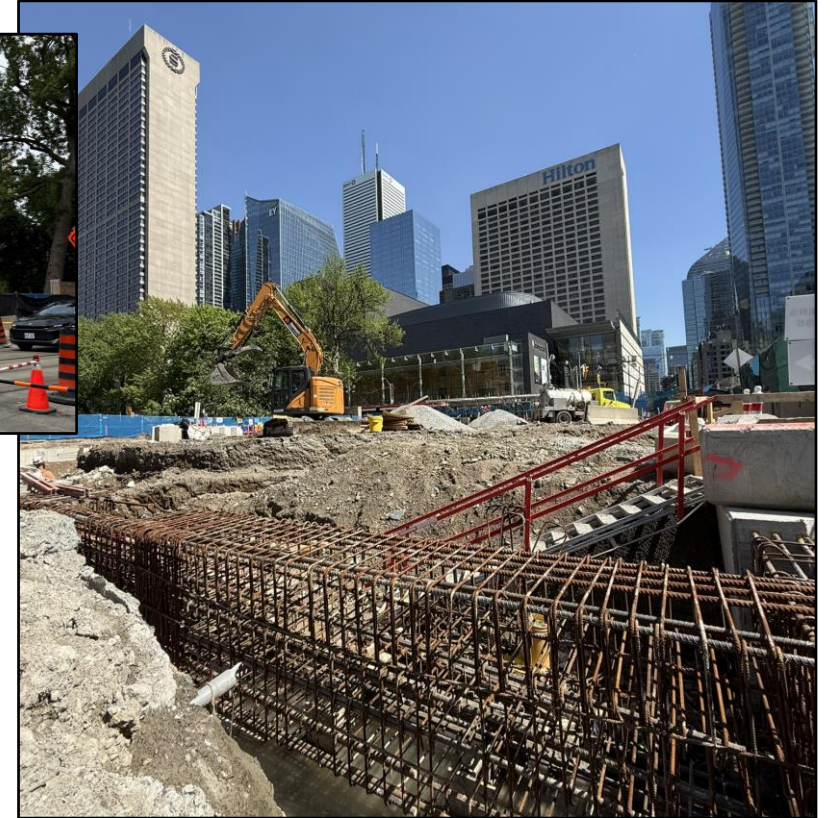


## CURRENT WORKS: FUTURE OSGOODE NORTH STATION SITE

- Excavation preparation at the station shaft site
  - Soil removal
  - Acoustic shelter foundation and installation
  - Overhead crane installation
  - Completion of capping beam
  - Rebar, formwork, concrete pour
- Excavation notice available [here](#)
- Installation of power substation and pedestrian tunnel on Queen Street West.



Pedestrian tunnel on the north Queen Street West sidewalk



Capping beam in progress at the north shaft

### Schedule Update

**Day shift:** Monday to Saturday, 7:00 a.m. to 7:00 p.m.

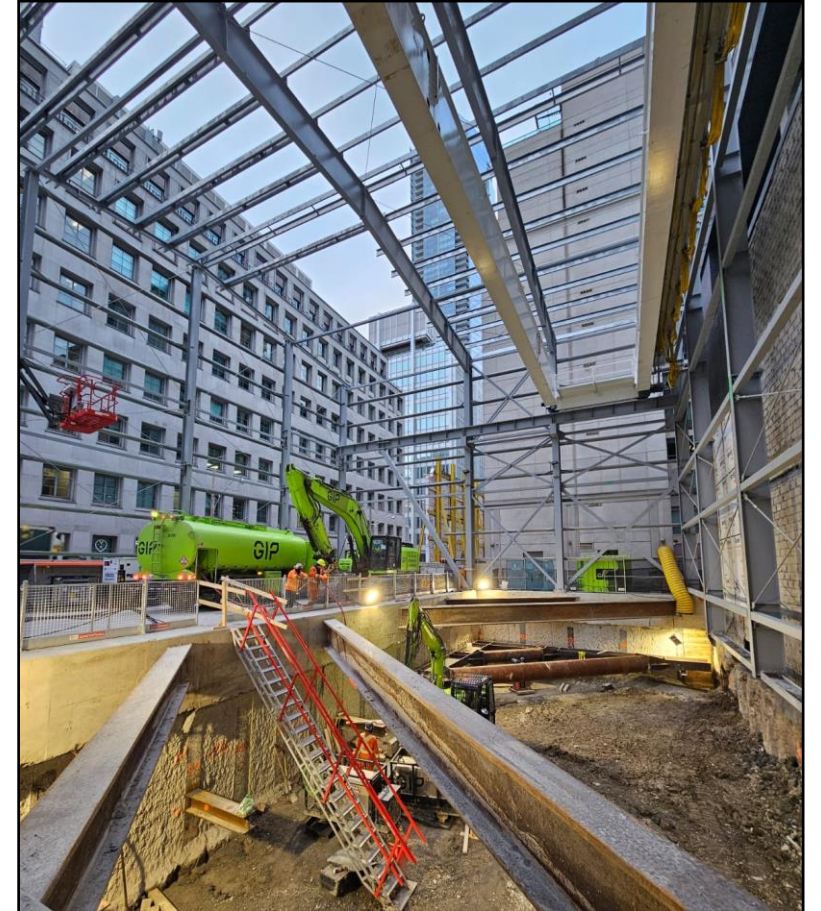
**Overnight shift:** Monday to Saturday, 7:00 p.m. to 7:00 a.m.

*\*We continue to work with adjacent buildings and stakeholders on adjusting the work schedule depending on the nature of work taking place on the site.*

## UPCOMING WORKS: FUTURE OSGOOD NORTH STATION SITE

Work to **advance excavation** is underway including:

- Soil removal
  - Acoustic shelter installation
  - Overhead crane installation
  - Continuation of capping beam
  - Struts and walers
- Construction notice available [here](#) with more information



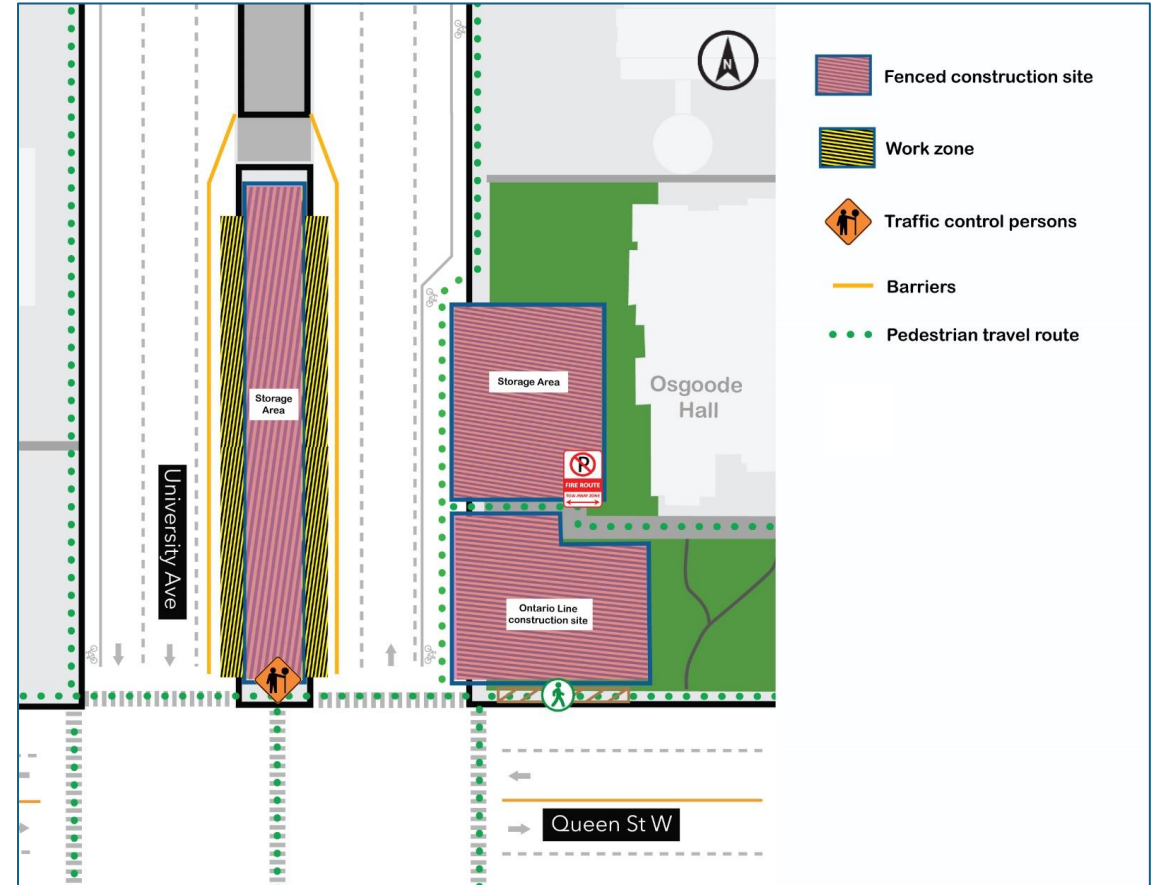
Acoustic shelter in early stages at the south site



## UPCOMING WORKS: FUTURE OSGOODE NORTH STATION SITE

### Signage installation

- Signage panels will be installed on the hoarding around the perimeter fencing of the construction zone in the median along University Avenue.
  - Partial closure of the northbound and southbound lanes is required, one lane at a time.
  - Lane closures are scheduled between 9:00 p.m. to 5:00 p.m.
  - Work will begin as early as Thursday, June 5<sup>th</sup> and expected to take up to two (2) weeks to complete.
- Construction notice available [here](#) with more information





Capping beam and deck pour at the **north** site





# Upcoming Work

# EIGHT WEEK LOOK-AHEAD: May 28 – July 23, 2025 – South Shaft

#	Activity	Expected Start	Expected Duration	Impact	Hours of Work	Mitigations
1	Excavation (rock)	Started/ongoing	11 months	Vibration, noise, air quality	Monday to Saturday from 7:00 a.m. until 11:00 p.m.	Hoarding, acoustic shelter. Dust mitigation includes misting, sweeping, Erosion and sediment control.
2	Cavern excavation and construction of headwalls	May 22	4 months	Vibration, noise, air quality	Monday to Saturday, 24/7	Acoustic shelter, hoarding. Dust mitigation includes misting, sweeping. Erosion and sediment control.
3	Installation of signage panels	June 5	Two weeks	Noise, lane closures	Monday to Saturday from 9:00 p.m. to 5:00 a.m.	Lane barriers, flag person(s)

\*Note: All dates and times are subject to change as construction planning progresses



# EIGHT WEEK LOOK-AHEAD: May 28 – July 23, 2025 – North Shaft

#	Activity	Expected Start	Expected Duration	Impact	Hours of Work	Mitigations
1	Construction of capping beam	Started/ongoing	1 week	Vibration, noise, air quality, temporary sidewalk closures	Monday to Saturday from 11:00 p.m. to 7:00 a.m.	Hoarding, noise wall. Dust mitigation includes misting, sweeping, Erosion and sediment control.
2	Installation of acoustic shelter and gantry crane	May 20	3 months	Vibration, noise, air quality, temporary sidewalk closure	Monday to Saturday from 11:00 p.m. to 7:00 a.m.	Noise wall, hoarding. Dust mitigation includes misting, sweeping. Erosion and sediment control.
3	Excavation (soft soil)	July 16	6 months	Vibration, noise, air quality	Monday to Saturday from 11:00 p.m. to 7:00 a.m.	Noise wall, hoarding. Dust mitigation includes misting, sweeping. Erosion and sediment control.
4	Construction of capping beam	Started/ongoing	1 week	Vibration, noise, air quality, temporary sidewalk closures	Monday to Saturday from 11:00 p.m. to 7:00 a.m.	Noise wall, hoarding. Dust mitigation includes misting, sweeping. Erosion and sediment control.
5	Installation of temporary power	Started	Ongoing	Noise, temporary sidewalk closures	Monday to Saturday from 11:00 p.m. to 7:00 a.m.	Noise wall, hoarding. Dust mitigation includes misting, sweeping. Erosion and sediment control.

\*Note: All dates and times are subject to change as construction planning progresses

# 2025 CONSTRUCTION LOOK-AHEAD

Timing	Activity	Location	Details and Purpose
Spring/Summer Fall/Winter	<ul style="list-style-type: none"><li>• Cavern excavation &amp; hauling</li></ul>	Within the <b>south</b> shaft, and along designated hauling routes	Removing large volumes of material from the station cavern to build a new subway cavern and tunnel underground. Dump trucks and various excavators will be used to complete this work.
Spring	<ul style="list-style-type: none"><li>• Capping beam installation</li><li>• Acoustic shelter foundation</li></ul>	Within the <b>north</b> shaft	Perimeter concrete support frame, and horizontal and vertical metal beams to build the future exterior structure of the acoustic shelter and future station.
Summer	<ul style="list-style-type: none"><li>• Acoustic shelter installation</li><li>• Shaft excavation</li></ul>	Within the <b>north</b> shaft	Acoustic shelter to contain construction sounds and dust outputs.
Fall/Winter	<ul style="list-style-type: none"><li>• Shaft excavation &amp; hauling</li></ul>	Within the <b>north</b> shaft	Removing large volumes of material from the station cavern to build a new subway cavern and tunnel underground. Dump trucks and various excavators will be used to complete this work.

\*Note: All dates and times are subject to change as construction planning progresses

# Discussion



## KEEPING YOU INFORMED

**Metrolinx will keep the community, residents and businesses informed by providing project updates, seeking input and feedback, while addressing questions and concerns effectively and quickly.**

**Next CLC meeting:** The next CLC meeting will be June 25, 2025.  
The meeting invite will be sent shortly.

**Connect with us:**

- Julia Orsini, Community Engagement Advisor
- Ross Andersen, Senior Advisor, Community Engagement

Email: [OntarioLine@metrolinx.com](mailto:OntarioLine@metrolinx.com)  
Telephone 24/7 @ 416-202-5100

**Follow us on social media:**

Twitter / Facebook / Instagram: @OntarioLine



*Scan here to sign up  
for the Ontario Line  
e-newsletter*



*Scan here to explore  
Ontario Line CLC  
documents*

