

Ontario Line

Thorncliffe Park

Construction Liaison Committee

May 29, 2025

LAND ACKNOWLEDGEMENT

Metrolinx acknowledges that we connect communities by building and operating transit within the traditional lands of the Anishinaabe, the Haudenosaunee and the Huron-Wendat peoples, for whom these lands continue to have great importance.

Treaties between First Nations and governments cover these lands, and the promises contained in these Treaties remain relevant to this day.

Metrolinx and its employees are committed to understanding the history of these lands and the continued impacts of colonization and take responsibility for actions to advance reconciliation.

Metrolinx will continue to seek the knowledge, expertise and experience of Indigenous partners and commits to doing business in a manner that is built on a foundation of trust, respect, and collaboration.



Session Guidelines

We greatly appreciate the community members who are here to take part in this public session.

To ensure that everyone can contribute to a positive and safe community experience, all participants shall adhere to the following *Code of Conduct*:

- Treat the presenters and participants with respect and understanding
- Acknowledge and appreciate the diversity of individuals and their situations
- Refrain from supporting or engaging in any form of discriminatory behaviour

Metrolinx is committed to fostering a safe and respectful environment.

We encourage respectful and constructive communication.

Safety Moment

Traffic signage on construction sites matter—not just for workers, but for the entire community.

Construction zones are temporary but the risks they pose can be severe:

- Changed traffic patterns
- Narrower lanes
- Increased pedestrian hazards
- Distracted or unfamiliar drivers

Clear visible well-placed signage and traffic barriers are there for both workers and the public:

- For drivers: signs help them slow down, stay alert and safely navigate unexpected changes
- For workers: they create a protected workspace where the focus can stay on the job and not hazards from the public
- For pedestrians and cyclists: signs and approved paths of travel provide guidance and warning to avoid potentially hazardous detours or equipment

It's important for all members of the public to obey traffic signage and routes of travel.

It's there for your safety

AGENDA

1. **Welcome** (5 minutes)

- Land Acknowledgement
- Safety Moment

2. **Construction Updates** (30 minutes)

- Utilities Works and Advanced Works – Overlea Boulevard
- Beth Neilson Underpass
- West Don Crossing
- Elevated Guideway and Stations – Overlea Boulevard
- Operations Maintenance and Storage Facility
- Restoration
- Review of Action Items

3. **Community-led Discussion** (20 minutes)

4. **Next Steps** (5 minutes)

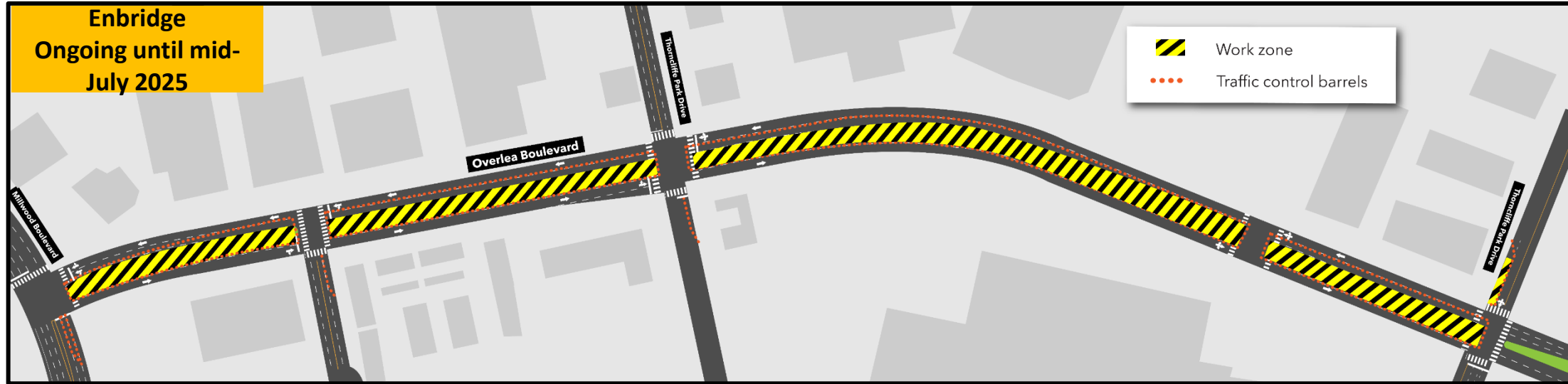
Advanced Works

Ongoing Third-Party Utility Work



- Utility providers are relocating existing infrastructure in Thorncliffe Park where they conflict with planned construction for the Ontario Line.
- Most of this infrastructure is located under the roadways, which has meant civil works with notable impacts to traffic flow while relocations are undertaken.
- Third party utility relocations in most areas are expected to be completed by Summer 2025.
- Active relocations in the area are:
 - **Toronto Hydro (THESL) Relocation:** Civil works on Millwood are completed. Cabling, splicing, and cutovers works are ongoing.
 - **Rogers & Zayo Relocation:** Civil works are completed. Cabling, splicing, and cutovers works are ongoing.
 - **Enbridge Relocation:** Civil works are ongoing to relocate existing gas main on Overlea Boulevard.
- All works are coordinated to minimize traffic disruptions and maintain access for residents and businesses.

Overlea Boulevard Utility Relocations - Ongoing until mid-July 2025

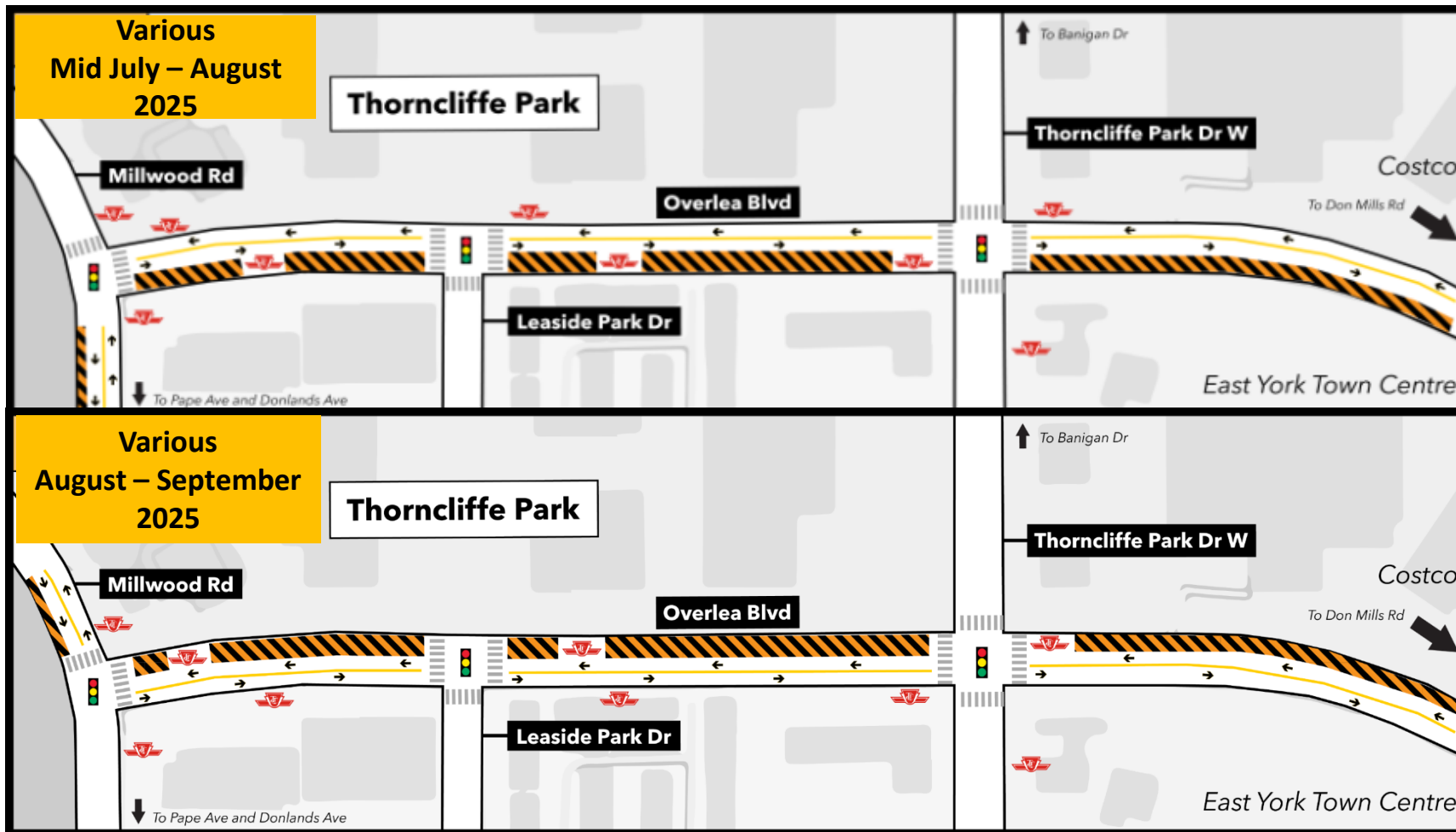


Enbridge : Civil works are ongoing to decommission and install natural gas regulation stations and pipelines. Most of the work zone is on Overlea Boulevard, and work is currently ongoing on Overlea Boulevard between Thorncliffe Park Drive East and Thorncliffe Park Drive West.

Traffic Implications

- Single lane closure on some parts of Overlea Boulevard.
- One lane of traffic on Overlea Boulevard will be maintained in each direction.
- At least one paid duty officer (PDO) and traffic control person will be present as required.

Overlea Boulevard Utility Relocations - Mid July to Fall 2025

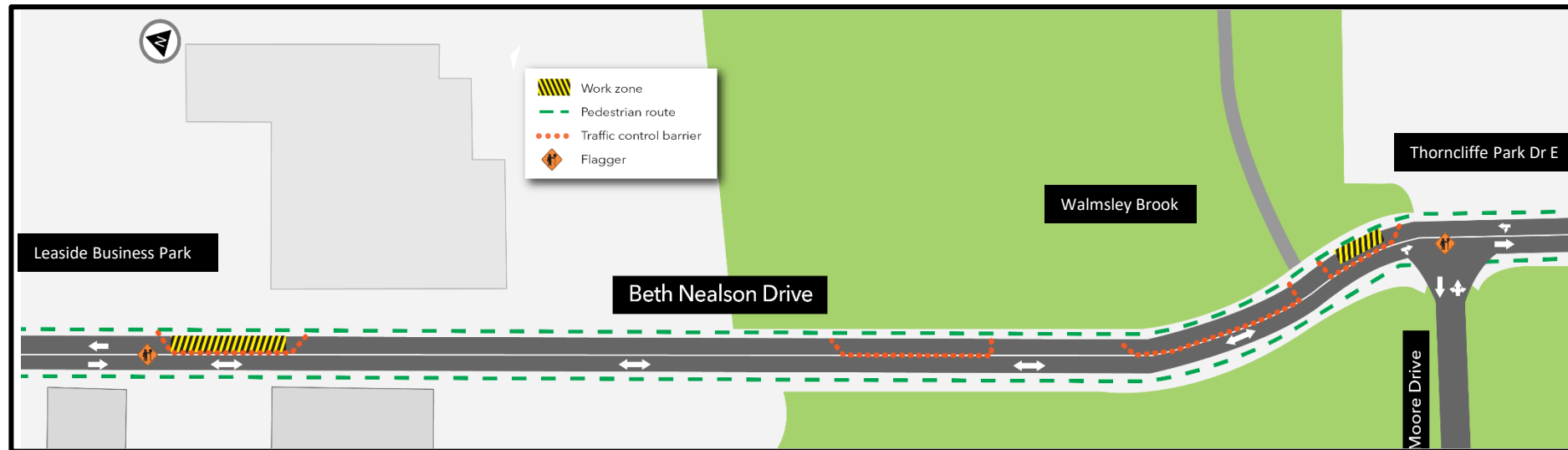


- Mid July 2025, GIP will return to Overlea Boulevard, to complete the remaining watermain and sewer tie-in works. Water service impacts are expected and will be scheduled overnight to limit service impact.
- This work will be completed utilizing localized traffic control plans to limit the impact to traffic.
- Turns will be allowed in both directions where currently allowed.
- Once watermain works is complete. GIP will complete boulevard construction, temporary streetlight installation and final paving works.

Traffic Impacts

- One lane of traffic available in each direction.
- Left and right turns at intersections will be maintained.
- Dedicated bus turn out available when possible.

Beth Neilson Drive Utility Relocations - June to December 2025



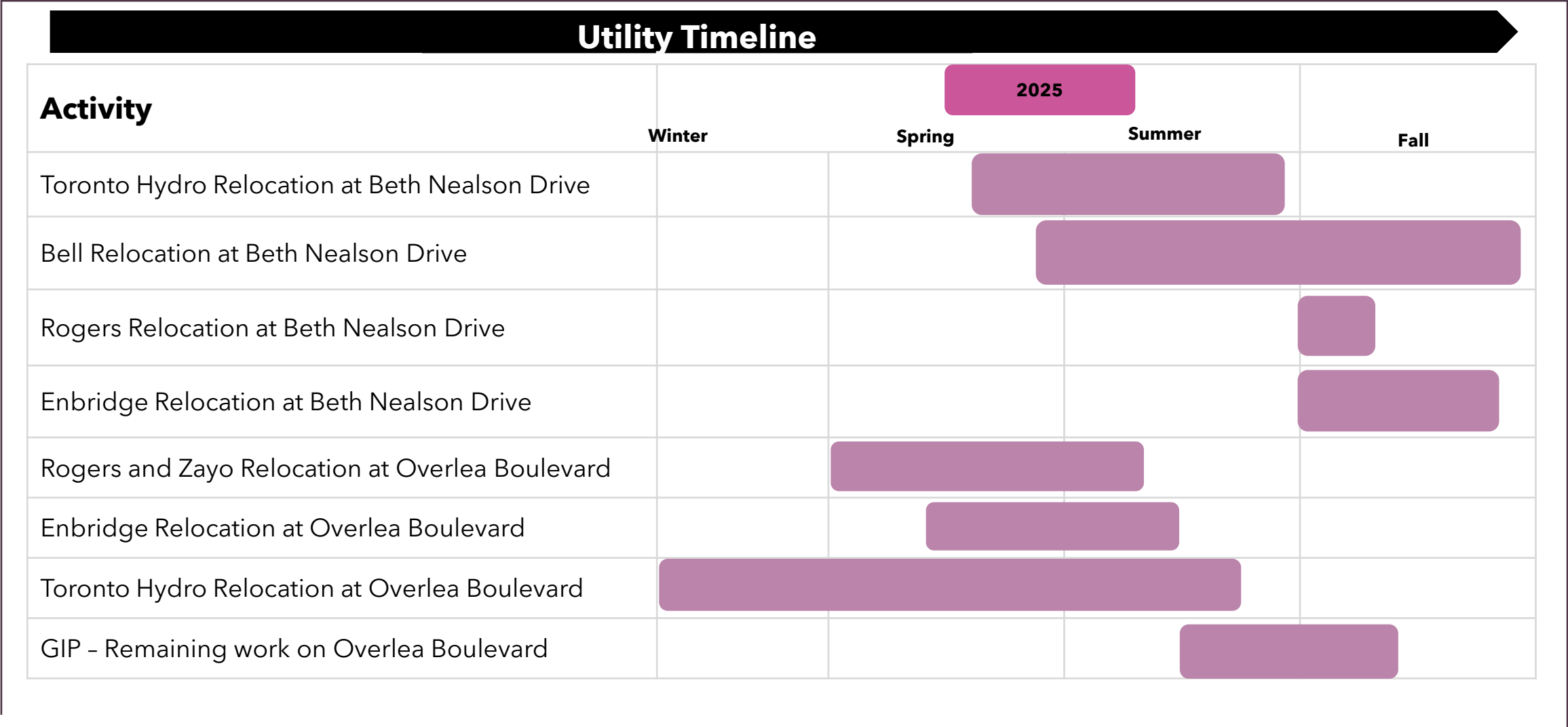
Bell

- One lane closure is expected on Beth Neilson Drive to enable construction.
- Bi-directional traffic will be maintained by traffic control personnel.

Enbridge

- Enbridge relocation will start once Bell completes its relocation. Expected start date is September 2025.
- Enbridge design is being finalized but traffic impacts expected are similar to the Bell activity.

Utility Work Timeline - 2025



Beth Nealsen Drive Underpass

Beth Neilson Drive Underpass and Grade Separation

Metrolinx is projecting the full closure of Beth Neilson Drive for March/April 2026.

Timelines for the closure are driven by affected by advanced works by utility providers that are subject to relocating infrastructure while maintaining service to customers in the area.

Construction activities include:

- Decommissioning of existing utilities and installation of new utilities.
- Construction of caisson walls on both sides of Beth Neilson Drive.
- Full depth excavation of Beth Neilson Drive to regrade the road.
- Building retaining walls on Beth Neilson Drive to delineate the roadway with sidewalk.
- Construction of track retaining wall and an overpass for the new Ontario line track.



Beth Neilson Drive Underpass - April to May Progress

- Installation of Geotechnical Monitoring Instrumentation.
- Fast fencing installation delineating the work zone.
- Traffic control personnel mobilized to aid traffic flow on Beth Neilson Drive.
- Trailers and other equipment have been mobilized to site.
- Tree removals have occurred.
- Excavation has commenced adjacent to Beth Neilson Drive.



Beth Nealson Drive Underpass - Monitoring Equipment

- Noise, vibration, and air quality monitoring equipment has been installed adjacent to and within the work area to measure noise, vibration and air quality resulting from activities within the construction area and ensure that they remain within acceptable tolerances.



West Don Crossing Works

West Don Crossing - Overview

The Ontario Line works in Thorncliffe Park and Flemingdon Park involve the construction of the West Don Crossing Bridge and the Beth Neilson Drive Underpass.

The West Don Crossing Bridge will be 411 meters long and 36 meters tall and will connect elevated sections between Thorncliffe Park and Flemingdon Park.

The construction of the structure involves the balanced cantilever method to build both bridges, avoiding the need for large sections of scaffolding underneath. Five long spans will be constructed between support columns, so the bridges will have a smaller footprint during construction.



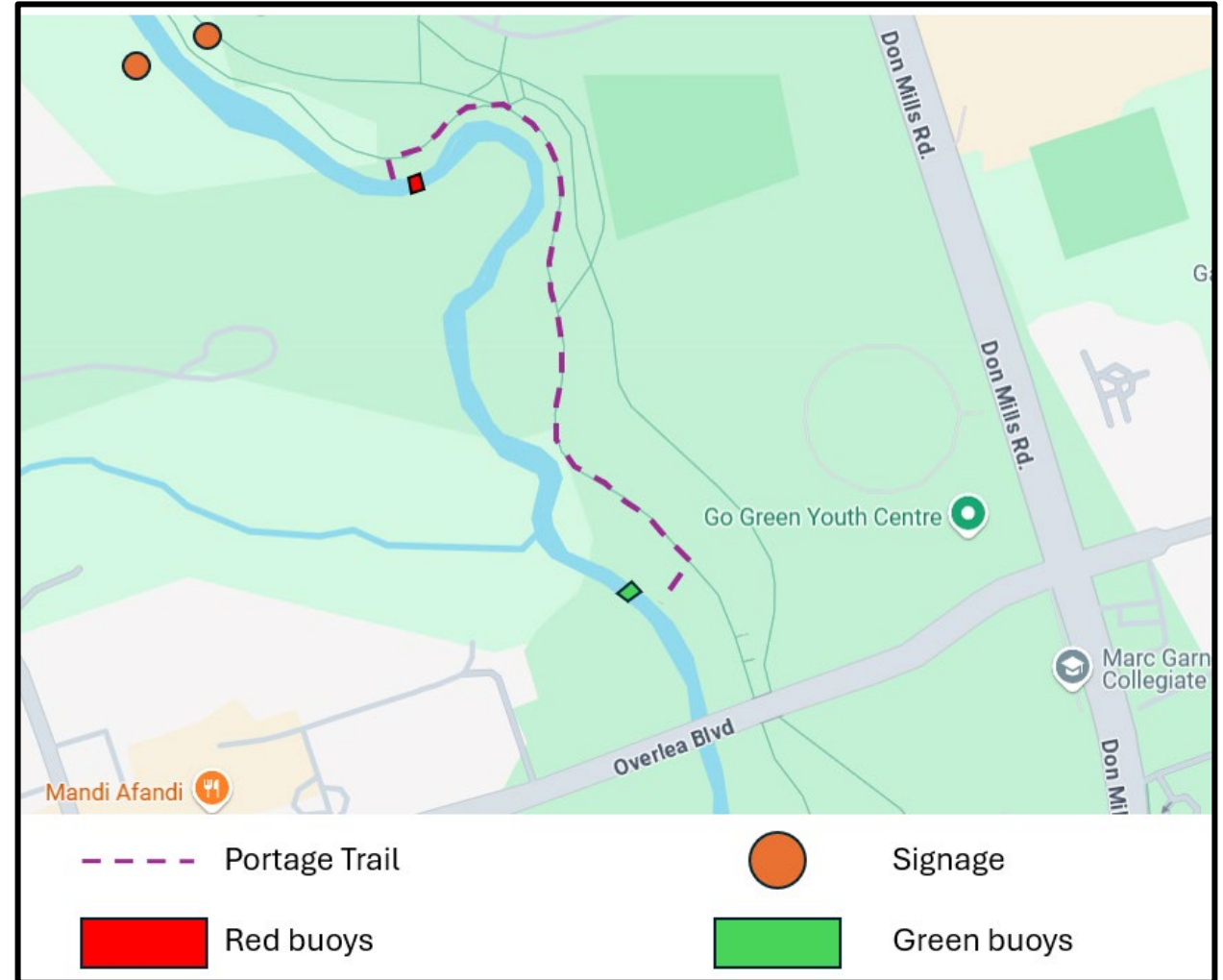
West Don Crossing - April to May Progress

- Geotechnical Monitoring Instrumentation has been installed, and some monitoring is in progress.
- Environmental controls have been installed within the work area.
- Excavation for the pile cap has begun.
- Piling activities and caisson works have been completed for 4 of the 5 piers at the West Don Crossing.
- Heavy equipment has been mobilized to site.



West Don Crossing - In water works

- In water works have begun as of May 27th, 2025, through to September 15th, 2027.
- An area of the Don River adjacent to the West Don Crossing work area will become restricted to river users.
- In water works will include the installation of a cofferdam, which is a barrier preventing water from entering the work area, ensuring a dry environment for construction crews. A meter bag cofferdam system will be used, which consists of multiple aggregate-filled bags and will be inspected regularly to ensure the system is effectively maintained during works.
- Improving the slope stability is part of the project scope to ensure support of the slope area. Erosion controls on the west bank and within the riverbed will facilitate access to complete this work.



Construction Lookaheads

Eight Week Look-Ahead: May 12 - July 4, 2025

#	Activity	Location	Expected Start	Expected Duration	Impact	Hours of Work	Mitigations
1	Mobilization	Beth Neilson Underpass	April	2 Months	Vibration, noise, air quality	7:00 am 5:30 pm	Vibration, noise and air quality monitoring
2	Excavation for track retaining wall	Beth Neilson Underpass	May 12	2 months	Vibration, noise, air quality	7:00 am 5:30 pm	Vibration, noise and air quality monitoring
3	Caisson installation for track retaining wall	Beth Neilson Underpass	June 1 (Tentative)	3 months	Vibration, noise, air quality	7:00 am 5:30 pm	Vibration, noise and air quality monitoring
4	Bell utility relocation	Beth Neilson Underpass	June	4 months	Single lane closures	7:00 am 7:00 pm	Bi-directional traffic will be maintained by traffic control personnel at either end of the single lane closure.
5	Foundation excavation and chipping at Pier D2	West Don Crossing	May	1 Month	Vibration, noise, air quality	7:00 am 5:30 pm	Vibration, noise and air quality monitoring

Eight Week Look-Ahead: May 12 - July 4, 2025

#	Activity	Location	Expected Start	Expected Duration	Impact	Hours of Work	Mitigations
6	Pier foundation works at Pier D3, D4 & D5 (Ongoing)	West Don Crossing	May	3 Months	Vibration, noise, air quality	7:00 am 7:00 pm	Vibration, noise and air quality monitoring
7	Toe Berm (Ongoing)	West Don Crossing	April	2 month	Vibration, noise, air quality	7:00 am 5:30 pm	Vibration, noise and air quality monitoring
8	Grading D1 Area (Ongoing)	West Don Crossing	May	2 month	Vibration, noise, air quality	7:00 am 5:30 pm	Vibration, noise and air quality monitoring
9	Soil Nailing & Anchor	West Don Crossing	June	6 months	Vibration, noise, air quality	7:00 am 5:30 pm	Vibration, noise and air quality monitoring

Operations, Maintenance and Storage Facility

OMSF: Upcoming Construction

40 Beth Neilson Drive is the future site of the Operations, Maintenance and Storage Facility (OMSF) for the Ontario Line. The OMSF will be the central location for Ontario Line train storage and maintenance, and the site of administration and operations offices.



May 25, 2025 – Site of the Future OMSF on Beth Neilson Drive.



Crews working at the OMSF to construct a retaining wall to support the main building.

- Work continues on the grounds of the future maintenance and storage building facility. Preparatory earth support work is almost complete.
- Beginning in mid-June, excavation works around the perimeter of the future building will commence.
- Excavators, dump trucks, cranes and loader trucks will be used to complete this work.
- This will be followed by the start of concrete foundation works expected in the summer.

Elevated Guideway and Stations Works

Thorncliffe Park Segment Overview

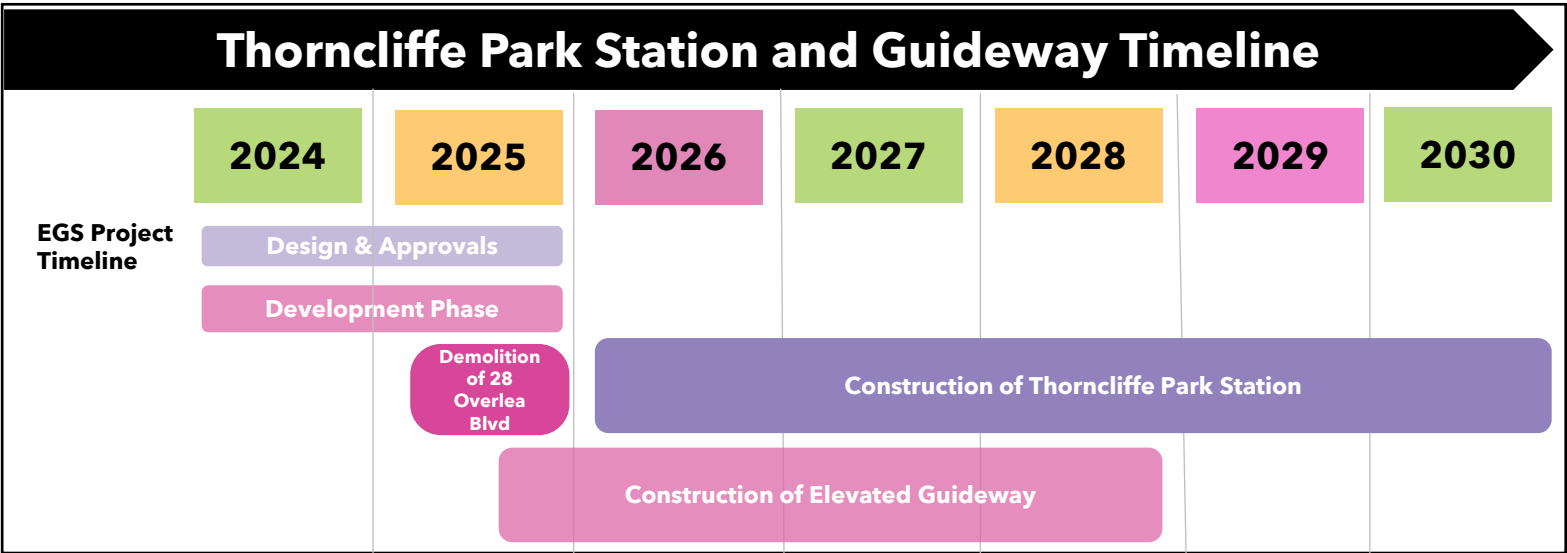


The Thorncliffe Park segment of the Ontario Line consists of:

- Thorncliffe Park Station and ancillary building.
- Elevated guideway track running East-West along Overlea Blvd.
- Bridge over Walmsley Brook
- Emergency Exit Building (EEB) at Millwood.
- Retaining wall using mechanically stabilized earth (MSE) system.
- Reconstruction of Overlea North Boulevard from Millwood Rd to East of Thorncliffe Park Dr.

Thorncliffe Park Station and Guideway Timeline

- Prior to major station construction, the EGS project is in the development phase, which involves advancing design and determining methodology for future construction. During this phase the EGS contractor is undertaking the following preparatory activities:
 - Noise and vibration baseline monitoring.
 - Environmental surveys and sampling.
 - 22 boreholes completed.
 - 6 test pits completed.
 - 4 maintenance hole inspections completed .
 - Demolition of 28 Overlea Boulevard.



Upcoming Works: Demolition of 28 Overlea Boulevard

Construction work slated to begin August 2025

- Crews will begin the safe demolition of 28 Overlea Boulevard to prepare for the future Thorncliffe Park station and elevated guideway.
- Demolition is the process of safely tearing down buildings or structures to clear a site for new construction or development.
- Following demolition, the site will be backfilled, fenced, and secured.

Construction equipment to be used



Excavators are large, powerful machines used to tear down large sections of a structures, including concrete and steel.



Skid Steer Loaders move rubble, earth, and materials across the site and into trucks for disposal.

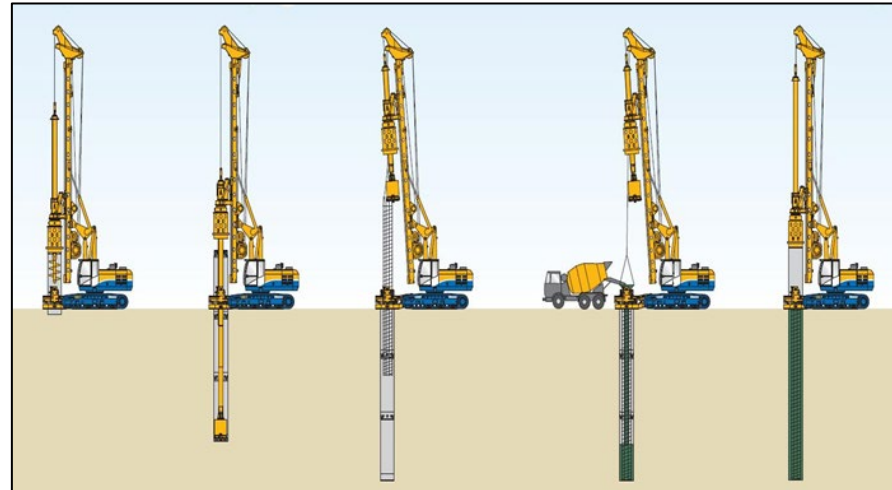


Crushers break down large demolition debris into smaller pieces for easier removal and potential recycling.

Elevated guideway construction with piling

Construction work slated to begin October 2025

- Concrete piles (drilled caissons) are a type of foundation that require drilling deep shafts into the ground that are reinforced concrete structures.
- A concrete pile cap is constructed at the top of each caisson which then has a concrete pier constructed on top of the pile cap.
- The slurry method will be used to keep deep holes from collapsing by filling them with drilling fluid until the concrete is poured in.
- The piers are the structures that will support the elevated guideway superstructure.
- This segment of piling work will occur on Overlea Boulevard between Millwood Road and 28 Overlea Boulevard.



Elevated guideway construction with piling



Excavators are large, powerful machines used to tear down large sections of structures, including concrete and steel.



Temporarily stationed on-site during equipment assembly/disassembly, **mobile cranes** lift and move heavy materials, such as steel beam and concrete segments.



Vacuum Trucks remove dust, debris, and slurry from the work site through powerful suction systems.



Concrete and Pump Trucks deliver and distribute concrete to hard-to-reach areas like deep foundational holes.



Drilling rigs bore deep holes into the ground for foundational supports.

Traffic Impacts post- Advanced Works

Date	Type of Work	Traffic Impacts	Pedestrian Impacts
July 2025 - December 2025	Station Construction, Guideway Construction across Thorncliffe Park Drive Intersection	A closure of the north side of Thorncliffe Park Drive (West) is proposed to facilitate the noted construction activities, including station and superstructure works above the roadway.	Temporary impacts for short-term equipment movements. Pedestrian connectivity will be maintained.
October 2025 - December 2025	Guideway Piles and Foundation Work along Overlea Boulevard	<p>Two traffic lanes will be maintained along Overlea Boulevard in each direction along with dedicated left turns where possible. Short-duration lane closures if needed, will be conducted on a day-to-day basis during off-peak hours.</p> <p>Two lanes will be maintained along Millwood Road. There may be additional short-duration lane closures on a day-to-day basis during off-peak hours.</p> <p>A shared left/right and dedicated left turn will be maintained at the Overlea/Millwood intersection.</p>	Temporary impacts for short-term equipment movements. Pedestrian connectivity will be maintained.

2025 Construction Look-ahead

Date		Location	Details and Purpose
Summer	Site laydown and preparation	Thorncliffe Park Station	Site laydown preparation includes trailers, site offices and facilities, access roads and hoarding required to facilitate the construction of Thorncliffe Park Station and the Elevated Guideway. EGS laydown areas are: 10 Overlea Boulevard, 26 Overlea Boulevard, 28 Overlea Boulevard, and 6 Thorncliffe Park Drive.
	Demolition of 28 Overlea Blvd	Thorncliffe Park Station	28 Overlea Boulevard demolition required to clear area for the guideways and Thorncliffe Park Station.
Fall	Piling, support of excavations, pile caps and piers	Overlea Boulevard	Construct support piles that are approximately 3 meters in diameter and 45 meters deep along Overlea Boulevard. The piles will support the piers of the elevated guideway. Piers are approximately 5 meters in height along Overlea Boulevard. The piers will support the superstructure/guideway.
	Tree removals	Overlea Boulevard	Tree removal activities to clear area for the elevated guideway.

Restoration Walk

Don Valley Tree Restoration Tour

- On Saturday May 24 residents of Thorncliffe Park, members of Toronto Nature Stewards, a representative of City Councillor for Ward 15, staff from Metrolinx, the City of Toronto went on a “tree restoration tour” in the Don Valley.
- The tour provided space for community members to learn about the approaches that have been used in Metrolinx projects and others completed by the City of Toronto and Toronto Region Conservation Authority.
- In addition, community members were able to see how wetlands, river and creek valleys can be restored.
- Scan the QR code for the Metrolinx Vegetation Guideline.



Metrolinx Restoration Approach

- Metrolinx focuses on ecological restoration that provides ecosystem function and services, rather than basic plantings, to replace trees removed.
- Metrolinx is planting a high density of trees and shrubs to increase the opportunity of native plants out-competing non-native/ invasive plants stressors from adjacent areas.
- Plantings plans are based on the existing site conditions and habitat type to maximize survivability.
- Choosing native plants for restoration increases ecological benefits provided to wildlife and enables enhancement of what was removed (~half of what was removed in the Don Valley was non-native or invasive).
- Metrolinx restoration in naturalized areas such as the Don Valley will include a 5-year maintenance, monitoring and warranty period for plantings.



Action Log

Action Log

#	Questions Asked / Action Item	Response/Resolution	Due Date / Status
1	EMS access on Overlea Blvd.	<ul style="list-style-type: none">Toronto Fire and EMS continue to be updated when traffic configurations change so they can plan accordingly.Dedicated TTC bus turnouts were implemented into traffic staging when possible.Turnouts significantly reduce the amount of traffic backup and allow for clear passage of emergency vehicles.	Completed
2	Investigate dust and dirt mitigation.	<ul style="list-style-type: none">GIP street sweepers circulated through the Advance Works project boundaries periodically (as conditions require and weather permits) and were also on standby on an as-needed basis.	Completed
3	Review suggestions for increased signage warning of delays and lane reductions.	<ul style="list-style-type: none">Signage has been added and is being maintained. Maintain existing advance warning signage within and outside project boundaries that advises of expected construction-related delays.GIP conducts periodic patrols/inspections of signs to ensure they remain visible and in good condition.	Completed
4	Metrolinx to present on traffic impact and mitigation plans for construction in Thorncliffe Park.	<ul style="list-style-type: none">Metrolinx to present at the May CLC meeting for Thorncliffe Park.	Ongoing
5	Metrolinx to share details of guideway construction process.	<ul style="list-style-type: none">Metrolinx to present more detail on the guideway construction process.	Ongoing
6	Metrolinx to organize a restoration walk.	<ul style="list-style-type: none">On May 24, Metrolinx carried out a restoration walk with residents at Evergreen Brick Works.	Completed

Contact Us

Contact Us

Metrolinx will keep the community, residents and businesses informed by providing project updates, seeking input and feedback, and addressing questions and concerns effectively and quickly.

Next CLC meeting: June 26, 2025

Connect with us:

Email: OntarioLine@metrolinx.com

Telephone 24/7 @ 416-202-5100

Follow us on social media:

Twitter / Facebook / Instagram: @OntarioLine



Visit Us:

East York Town Centre
45 Overlea Blvd., Toronto, ON M4H 1C3
Unit 153 (across from the Rogers store)
Monday to Friday: 9 a.m. to 5 p.m.

