

Finch West Light Rail Transit (LRT) Project Construction Liaison Committee (CLC)

June 2025



AGENDA

- Land Acknowledgement
- Important Milestones
- Updates
 - Finch West Station
 - Maintenance and Storage Facility and Light Rail Vehicle Testing
 - Humber College Station
 - Keele Street to Signet Drive
 - Signet Drive to Milvan Drive
 - Milvan Drive to Islington Avenue
 - Islington Avenue to Highway 27
- **Communications and Community Engagement**



Photo: Humber College station walkway, view south. 2024.12.04

Land Acknowledgement

METROLINX LAND ACKNOWLEDGEMENT

Metrolinx acknowledges that we connect communities by building and operating transit within the traditional lands of the Anishinaabe, the Haudenosaunee and the Huron-Wendat peoples, for whom these lands continue to have great importance. Treaties between First Nations and governments cover these lands, and the promises contained in these Treaties remain relevant to this day.

Metrolinx and its employees are committed to understanding the history of these lands and the continued impacts of colonization and take responsibility for actions to advance reconciliation.

Metrolinx will continue to seek the knowledge, expertise and experience of Indigenous partners and commits to doing business in a manner that is built on a foundation of trust, respect, and collaboration.

Finch West Station

FINCH WEST STATION



Finch Station Occupancy expected by the end of June 2025.



New Duke Heights BIA benches installed nearby Finch West station.

Maintenance and Storage Facility and Light Rail Vehicle Testing

MAINTENANCE AND STORAGE FACILITY (MSF)



MSF Occupancy was achieved December 2023.



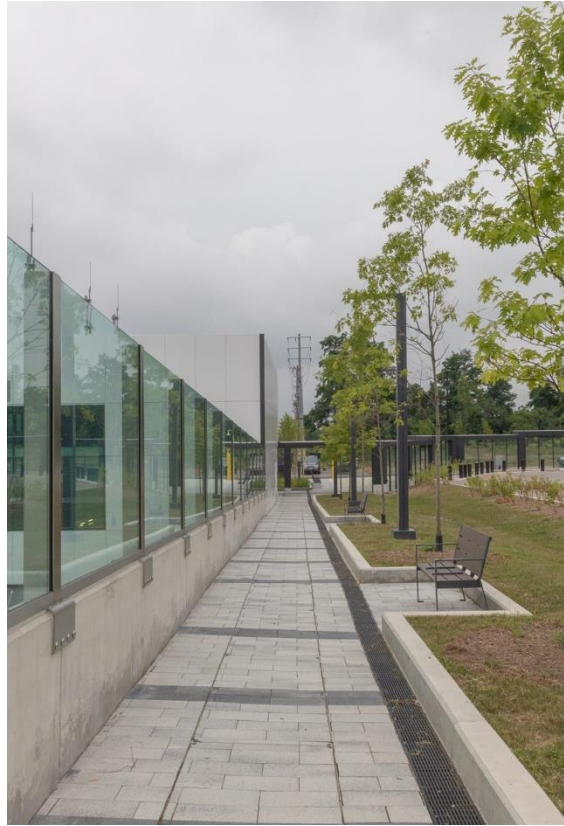
Light rail vehicle testing and commissioning activities continue at the MSF, along the guideway, at the stops and stations.

Humber College Station

HUMBER COLLEGE STATION



Humber College station
Occupancy achieved
October 2024.



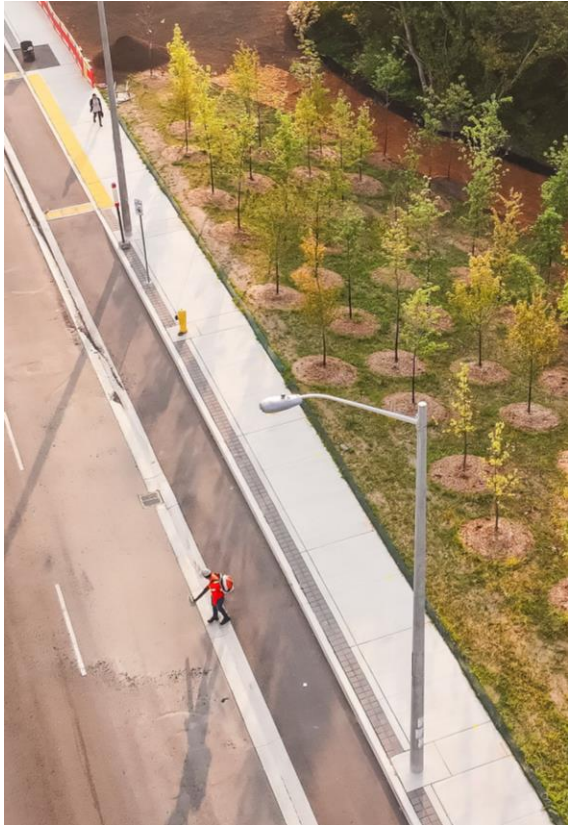
Landscaped pedestrian space
at Humber College station.



Interior of Humber College station north building.

Keele Street to Signet Drive

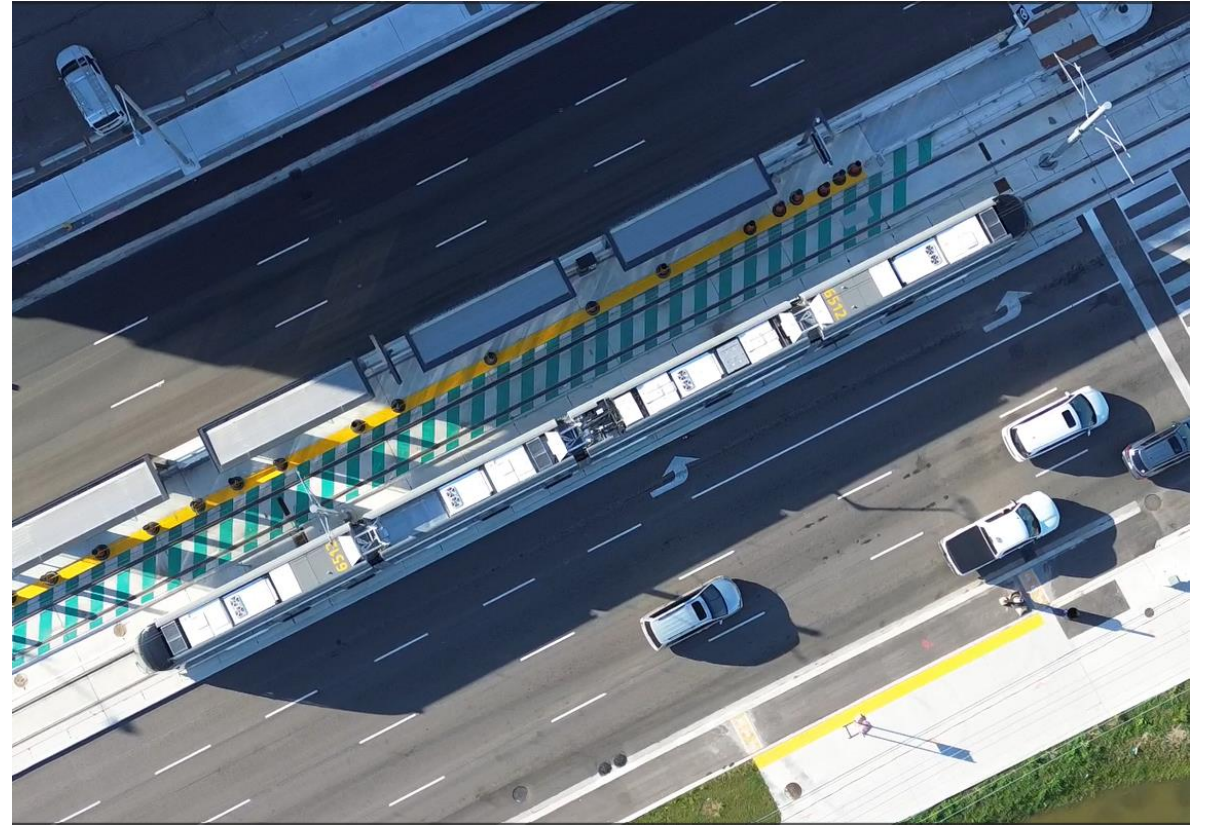
KEELE STREET TO SIGNET DRIVE



Remediation work is ongoing with minimal impacts on traffic.



Pedestrian crossing near Tobermory Drive, view east.



Birds eye view of light rail vehicle testing at Norfinch Arrow stop.

Signet Drive to Milvan Drive

SIGNET DRIVE TO MILVAN DRIVE

- The area is in final configuration with sidewalks and bike lanes in place, except Canadian Pacific Rail bridge area.
- Final paving is complete, except Canadian Pacific Rail bridge area.
- Permanent traffic and transit signals are installed and activated.
- Remaining remediation work is ongoing with minimal impacts on traffic.
- Field modifications may occur to complete work safely and minimize impact on the public.
- Paid Duty Officers, flaggers, and detour signs will be used to direct traffic and improve safety as needed.
- Community members will be notified of any significant construction-related impacts, separately.



View west from Weston Road to Jayzel Drive.

Milvan Drive to Highway 27

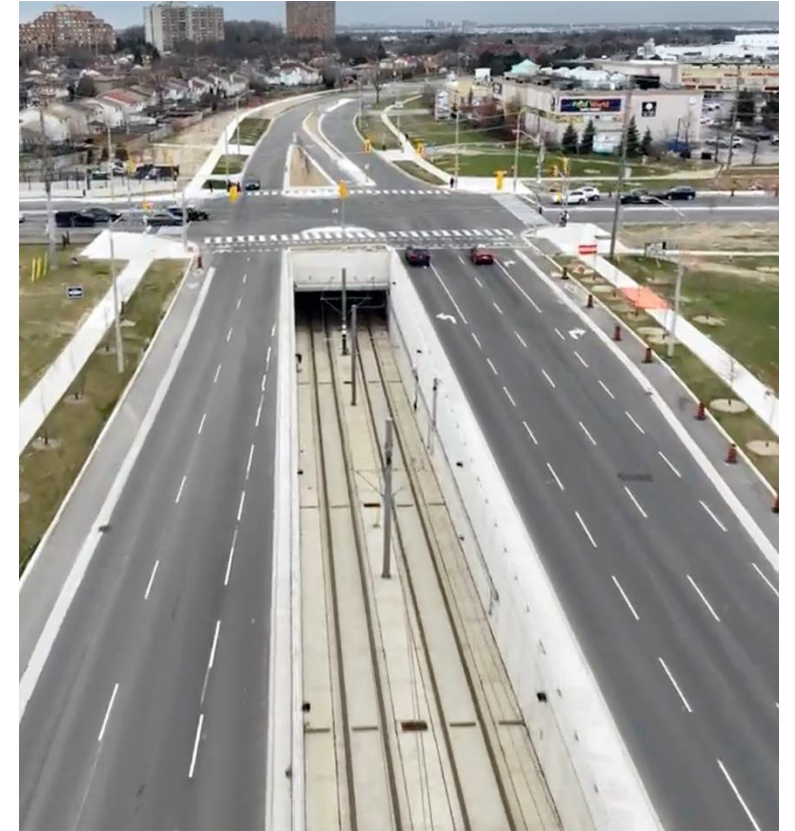
MILVAN DRIVE TO HIGHWAY 27



View west from Milvan Drive to Duncanwoods stop.



View west of the Rowntree Mills stop at Kipling Avenue.



View west of the Humber College station portal at Highway 27 and Finch Avenue west.

Communications and Community Engagement

COMMUNICATIONS AND COMMUNITY ENGAGEMENT

Upcoming Activities

- Q2 Metrolinx Project Newsletter – June 2025
- Geo-targeted social media Safety Ad Campaign for LRV Testing – May/June Q2
- Shop Local Print Ad – June Q2
- Know Your Stops engagements – June Q2



Photo: “Know Your Stops” Route and Stop information.

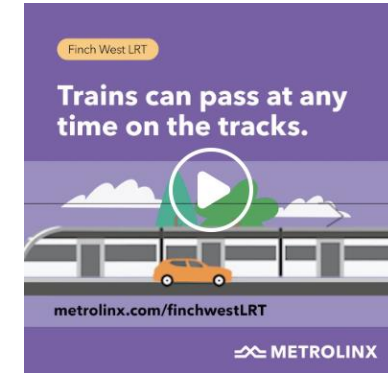


Photo: Social Media Ad June 2025.

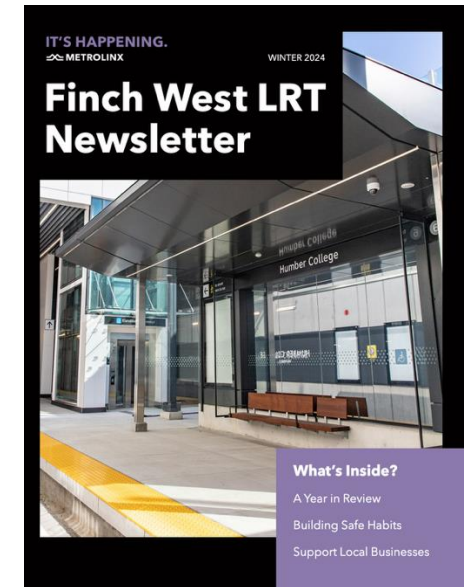


Photo: Print ad for shopping locally in the Finch West Community and Q1 Finch West Project Newsletter.

COMMUNICATIONS AND COMMUNITY ENGAGEMENT

Completed Activities

- Safety Ad Campaign for LRV Testing – May Q2
- Know Your Stops engagements – May Q2
- Careers in the Trades event for students – May Q2



Photo: Billboard and print ads for Light Rail Vehicle Safety and Shop Local in the Finch West Community.



Photo: Know Your Stops sticker.

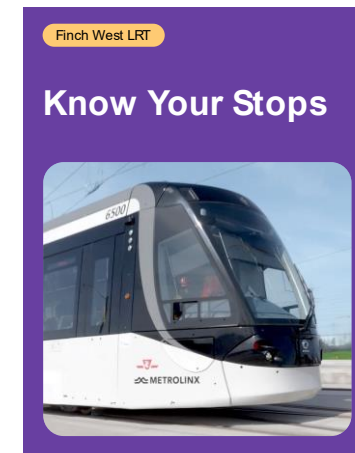


Photo: Know Your Stops brochure.

COMMUNICATIONS AND COMMUNITY BENEFITS

- The Maintenance period for the Finch West LRT has begun recruiting for positions at the Maintenance and Storage Facility.
- Job seekers can apply directly to jobs posted on Indeed.ca, www.mosaictransit.com/jobs.html, or send resumes and inquiries to: **fwlrt_workforce@mtmgrp.ca**



Photo: Stock photo.

KEEPING YOU INFORMED

Communication Methods

- E-Newsletter, Project Website Updates
- Construction Notices
- Metrolinx News Blog
- Social media
- Project Quarterly newsletter

Engagement Tools

- Working or Advisory Group Meetings
- Business Liaison, curbside meetings
- Public Meetings

Stay Informed: metrolinx.com/finchwestlrt and sign up to our Toronto West e-newsletter

Questions or comments: TorontoWest@metrolinx.com, @FinchWestLRT, 416-202-6500



Photo: Stock photo.

Thank you and Stay Safe

