

Ontario Line

# King-Bathurst Construction Liaison Committee

June 5, 2025



# Agenda

## Welcome (5 minutes)

- Introductions
- Land Acknowledgement
- Code of Conduct

## Presentation (30 minutes)

- Action Items
- Safety Moment
- Construction Update
- Upcoming Work
- Discussion

## Q/A and Discussion (25 minutes)



*Looking towards the southeast and the heritage façade on the King-Bathurst south site, from the intersection of King Street West and Bathurst Street.*

# LAND ACKNOWLEDGEMENT

---

Metrolinx acknowledges that we connect communities by building and operating transit within the traditional lands of the Anishinaabe, the Haudenosaunee and the Huron-Wendat peoples, for whom these lands continue to have great importance.

Treaties between First Nations and governments cover these lands, and the promises contained in these Treaties remain relevant to this day.

Metrolinx and its employees are committed to understanding the history of these lands and the continued impacts of colonization and take responsibility for actions to advance reconciliation.

Metrolinx will continue to seek the knowledge, expertise and experience of Indigenous partners and commits to doing business in a manner that is built on a foundation of trust, respect, and collaboration.

# Session Guidelines

We greatly appreciate the community members who are here to take part in this public session.

To ensure that everyone can contribute to a positive and safe community experience, all participants shall adhere to the following *Code of Conduct*:

- Treat the presenters and participants with respect and understanding
- Acknowledge and appreciate the diversity of individuals and their situations
- Refrain from supporting or engaging in any form of discriminatory behaviour

**Metrolinx is committed to fostering a safe and respectful environment.**

**We encourage respectful and constructive communication.**



**CLC ACTION ITEMS**

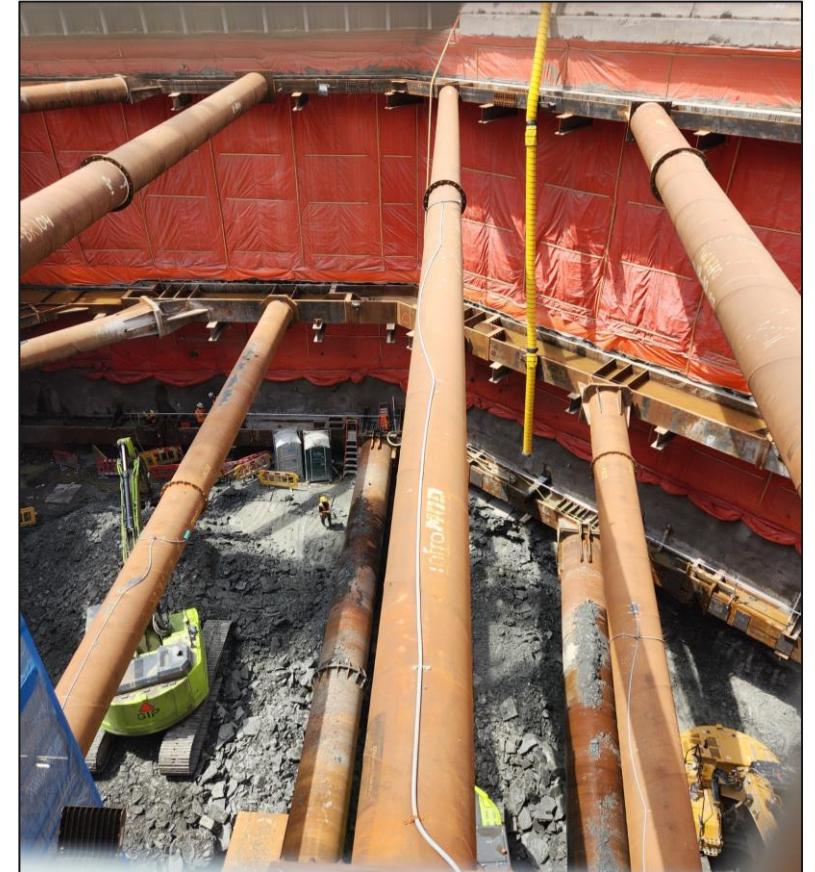
#	ACTION ITEM	RESPONSE	STATUS
1	No pending action items identified at last meeting (May 8, 2025)	<a href="#">King-Bathurst CLC Minutes</a>	N/A

## SAFETY MOMENT - EXCAVATION ZONES

Ontario Line construction is in the excavation phase, which means increased heavy equipment activity and deeper work zones.

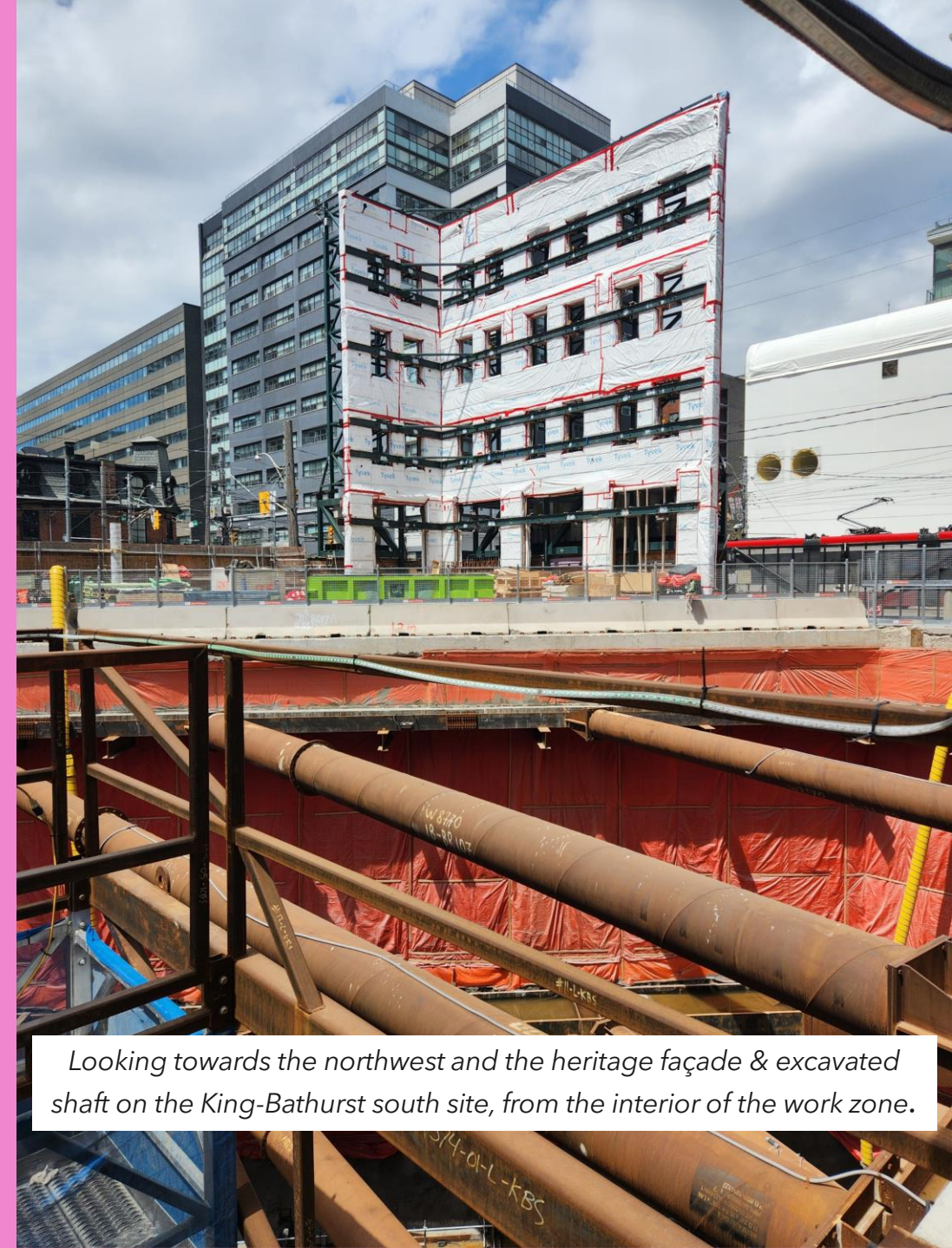
Please stay alert and follow these safety reminders when walking near the site:

- **Use designated pedestrian routes.**  
Excavation zones are fenced off for your protection. Please don't cross into restricted areas.
- **Stay clear of machinery.**  
Excavators, dump trucks, and drilling rigs have limited visibility. Avoid standing near site access points.
- **Watch for changes in sidewalk routes.**  
As excavation progresses, pedestrian detours may shift. Follow posted signage and flag persons.



*Looking down at struts and excavation of the King-Bathurst south site.*

# King-Bathurst Construction Update



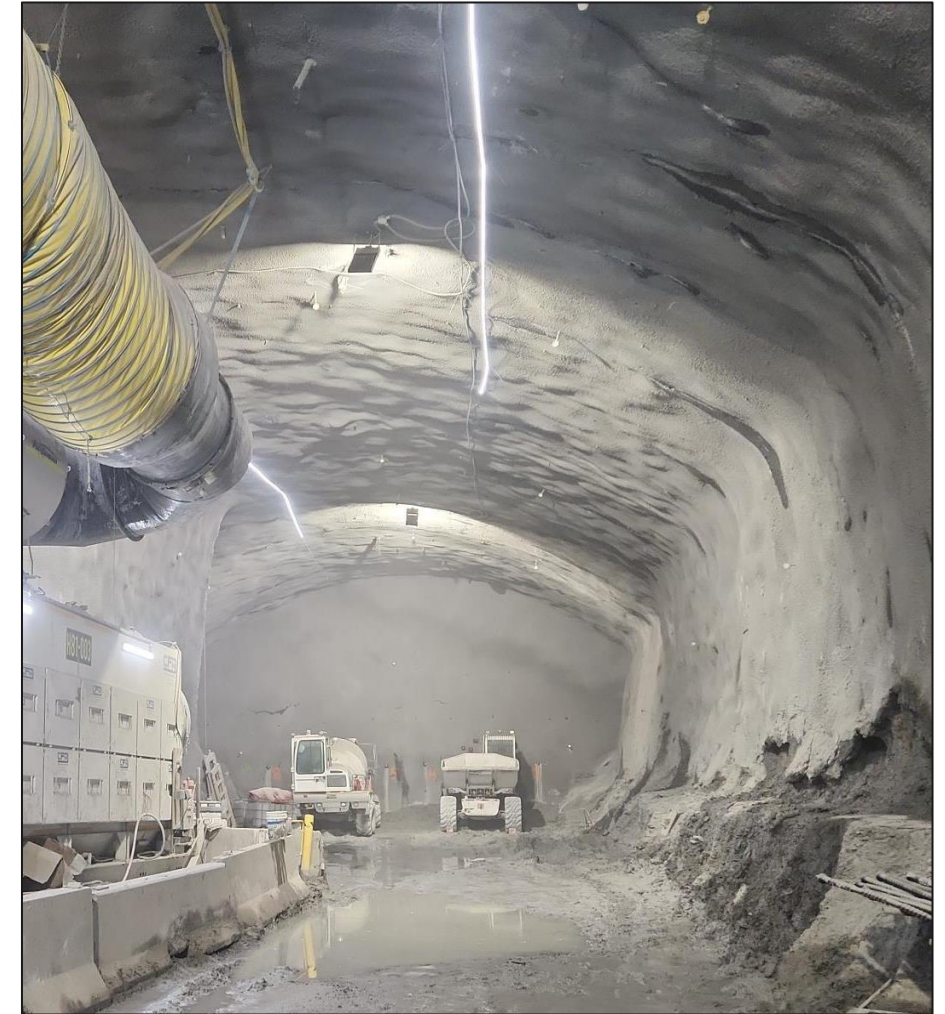
*Looking towards the northwest and the heritage façade & excavated shaft on the King-Bathurst south site, from the interior of the work zone.*



## CURRENT WORKS: FUTURE KING-BATHURST STATION NORTH SITE CAVERN

**Both ends of the cavern (known as the headwalls) have been reached, and it continues to be widened and deepened.**

- The headwalls represent the total length of the cavern being established.
- Excavation continues 24/7.
- Equipment such as roadheaders, rockbolters & shotcrete machines are used to shape this underground space.



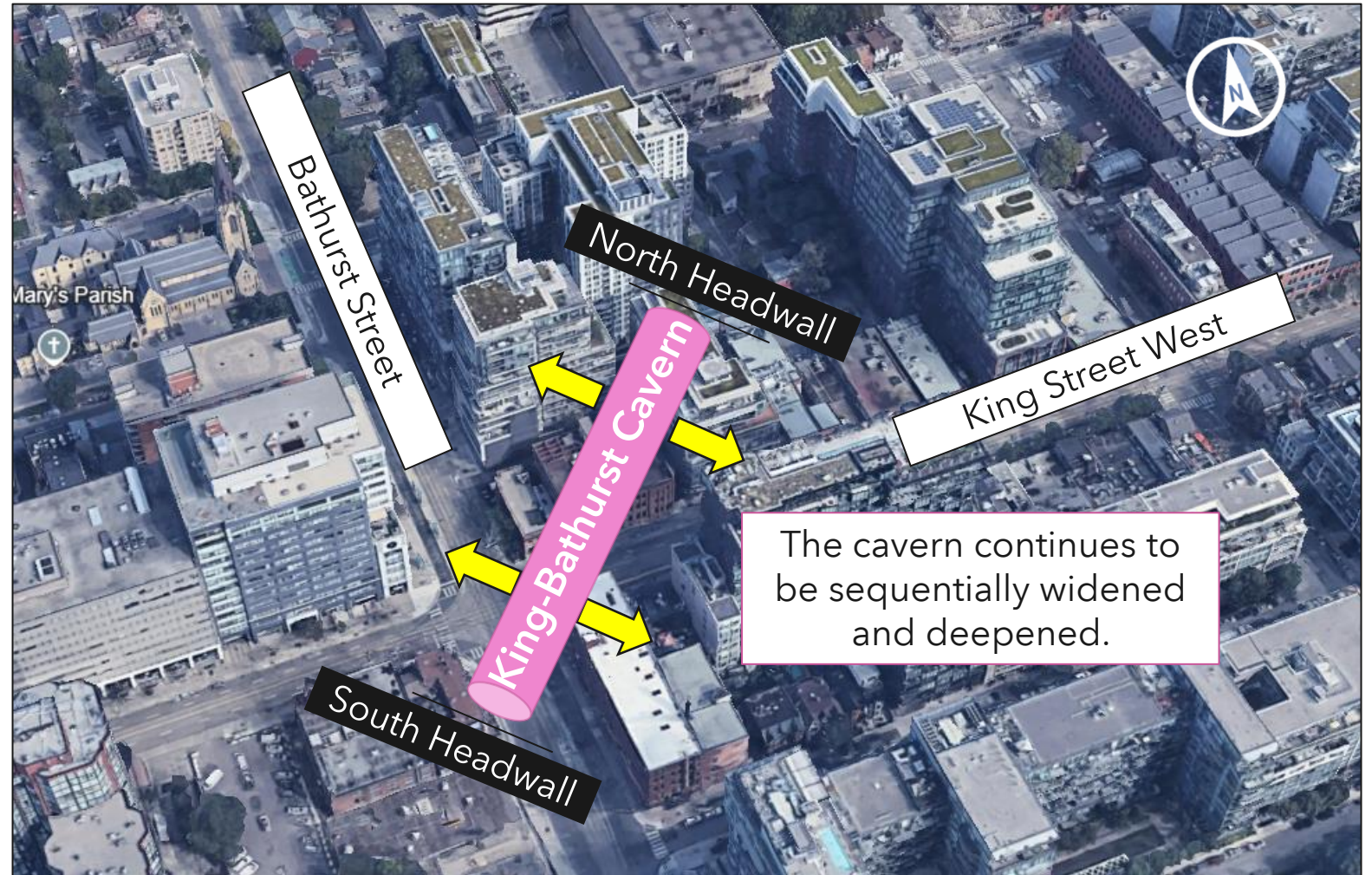
*Cavern views looking at the south (left) and north (right) headwalls, with ventilation and excavation equipment on hand.*



## CURRENT WORKS: FUTURE KING-BATHURST STATION CAVERN HEADWALLS LOCATION

The headwalls represent the “bookends” of the cavern process; the north & south limits.

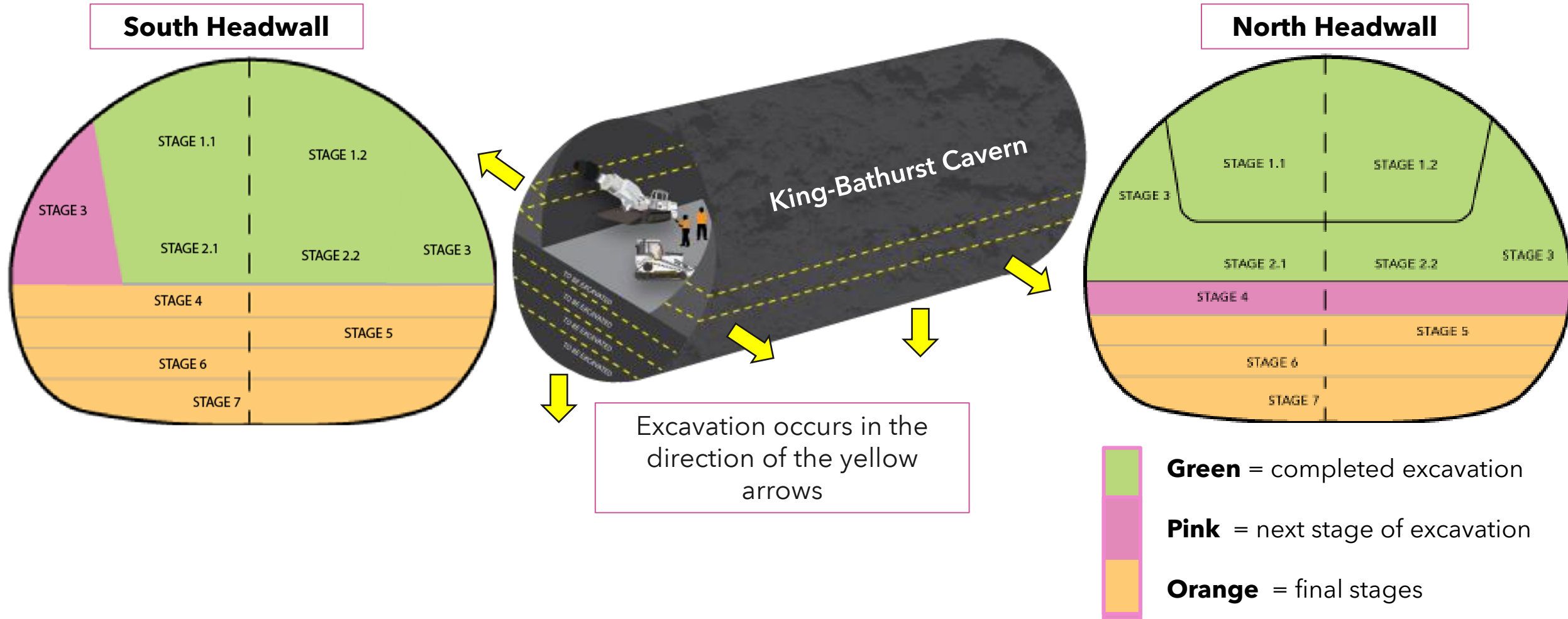
- Crews continue to **widen and deepen the cavern**, to accommodate the full width and depth needed for tunnel boring machines, as well as the future station platform and tracks.
- To date, approximately 21,000m<sup>3</sup> of rock has been excavated.



*The pink cylinder depicts the approximate location of the cavern work to date, in relation to the neighbourhood.*

## CURRENT WORKS: FUTURE KING-BATHURST STATION CAVERN WIDENING AND DEEPENING

- As illustrated below, crews are sequentially **widening and deepening the cavern**.





LOOKING TOWARD THE SOUTH HEADWALL, FROM INSIDE THE CAVERN





# LOOKING TOWARDS THE NORTH HEADWALL, FROM INSIDE THE CAVERN

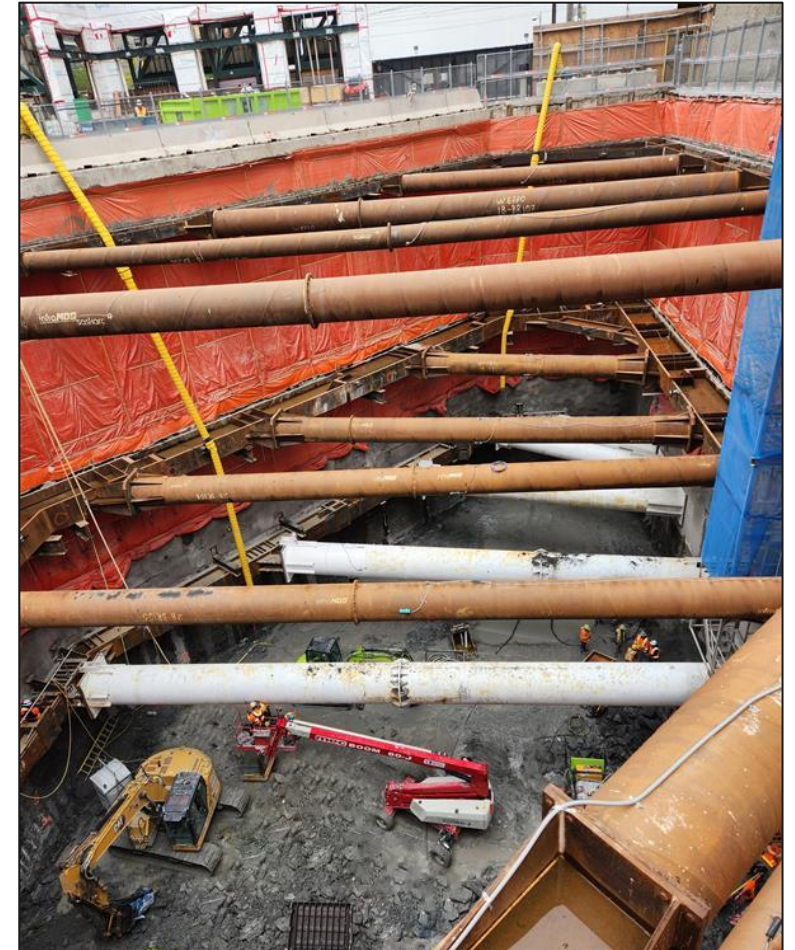




## CURRENT WORKS: FUTURE KING-BATHURST STATION SOUTH SITE EXCAVATION

Crews continue to excavate the space that will become the primary King-Bathurst station entrance & platform access, also known as the station shaft.

- Work is completed in cycles, with coordinated phases of rock breaking followed by installation of structural reinforcements, called **struts and walers**. Once installed, excavation resumes.
- Excavation has reached 25+ metres of depth, moving towards a final depth of approximately 40 metres.
- Work occurs Monday to Friday, from 7:00 a.m. - 11:00 p.m., Saturday from 8:00 a.m. - 5:00 p.m., and some Sundays as needed, from 8:00 a.m. - 5:00 p.m.



*Looking up from the excavated south shaft and the struts and walers (beams) for structural support.*



# ONGOING EXCAVATION AND STRUCTURAL SUPPORT INSERTION AT KING-BATHURST SOUTH





## CURRENT WORKS: FUTURE KING-BATHURST STATION EXCAVATED MATERIALS HAULING PROCESS

**As crews continue to work below ground, excavated rock needs to be removed from the site.**

- Bins are loaded with rock at the bottom of the shaft and raised back to the surface using a crane.
- This lifting process includes an alarm inside the acoustic shelter, to alert crews that heavy machinery is moving.
- Dump trucks are on standby, to remove the materials from site, once they reach the surface.
- This process ensures work can progress safely and efficiently.



*A self-dumping bin loading up a dump truck with excavated materials.*

# Upcoming Work

## UPCOMING WORKS: FUTURE KING-BATHURST STATION EIGHT WEEK LOOKAHEAD: JUNE-JULY 2025

#	Activity	Location	Expected Start	Expected Duration	Impact	Hours of Work	Mitigations
1	<b>Cavern Excavation</b>	North site	Ongoing	Through mid-July	Vibration, noise, air quality	Monday to Sunday 24 hours	Acoustic tent. Dust mitigation includes misting, sweeping. Erosion and sediment control.
2	<b>South shaft excavation</b>  <b>Rock breaking activities to lower the overall depth of the shaft</b>	South site	Ongoing	9 weeks as of mid-July  Rock breaking occurring	Use of hammer may result in discernable noise and vibration.  Additional support from Roadheader as well	Monday to Sunday 7:00a.m. -11:00pm*  Weekend rock breaking occurring 9:00 a.m. - 5:00 p.m.	Dust mitigation includes misting, sweeping. Erosion and sediment control.
3	<b>Excavating hard soil (limestone); includes rock anchors and shotcrete</b>	South Shaft	Ongoing	Entire lookahead period	Noise.	Monday to Friday 7:00 a.m. - 11:00 p.m. & Saturday 8:00 a.m. - 5:00 p.m. and some Sundays as needed; 8:00 a.m. - 5:00 p.m.	Hoarding as noise mitigation, noise blankets around excavation attachments, use of ripper whenever possible, use of broadband alarms for equipment on site, monitoring to ensure 7 a.m. start.*
4	<b>Construct Pentagonal Beam (Rock Pillar)</b>	South site	June	Six weeks	Vibration, noise, air quality.	Monday to Friday with some Saturdays and Sundays  7:00 a.m. - 11:00 p.m.	Plywood hoarding for noise mitigation. Dust mitigation includes misting, sweeping. Lights lowered. Erosion and sediment control.



UPCOMING WORKS: FUTURE KING-BATHURST STATION EIGHT WEEK LOOKAHEAD: JUNE-JULY 2025

#	Activity	Location	Expected Start	Expected Duration	Impact	Hours of Work	Mitigations
5	South Shaft Adit	South site	Late July	Seven Weeks	Vibration, noise,	Monday to Friday with some Saturdays and Sundays  7:00 a.m. - 11:00 p.m.	Plywood hoarding for noise mitigation. Dust mitigation includes misting, sweeping. Lights lowered. Erosion and sediment control.

## KEEPING YOU INFORMED

**Metrolinx will keep the community, residents and businesses informed by providing project updates, seeking input and feedback, while addressing questions and concerns effectively and quickly.**

### **Connect with us:**

Email: [OntarioLine@metrolinx.com](mailto:OntarioLine@metrolinx.com)

Telephone 24/7 @ 416-202-5100

### **Follow us on social media:**

Twitter / Facebook / Instagram: @OntarioLine



*Scan here to sign up  
for the Ontario Line  
e-newsletter*



*Scan here to explore  
Ontario Line CLC  
documents*