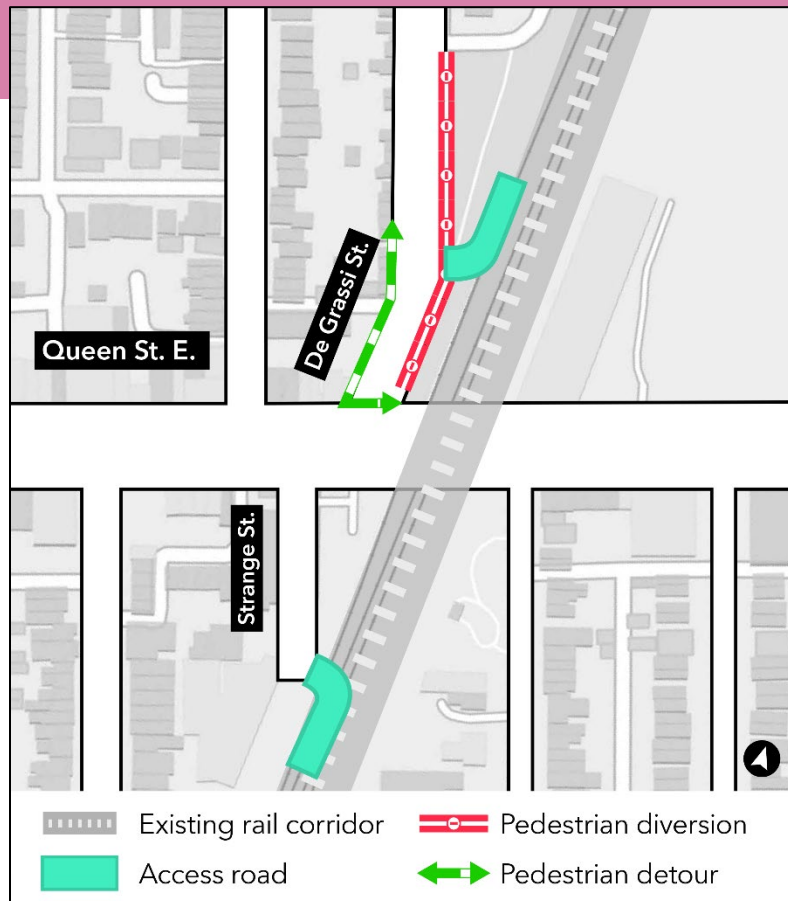


Update: Access road locations at De Grassi Street and Strange Street

Expected timeline: Access roads will be operational until the end of 2025

Hours of work: Monday to Friday, between 7 a.m. – 5 p.m. with periodic weekend work



What is happening?

- Access road construction at De Grassi Street and Strange Street is completed.
- The location of these access roads was temporarily changed, and the accesses were built further away from Queen Street to reduce disruption to traffic, pedestrians, and businesses.
- **The access roads will remain in the locations shown on the map above until mid-July 2025. In late July, the location of the access roads will shift towards Queen Street.**
- Access roads will be secured with fencing and filter screens, and mud mats will be installed to minimize dust.
- Solid noise barriers will be installed around the access road to mitigate construction impacts including noise and dust. The barriers will be approximately three metres tall.

- These access roads are required to bring construction equipment and materials in and out of the rail corridor safely – the roads enable construction of new retaining walls and noise barriers on the west side of the corridor.
- Temporary traffic and pedestrian diversions will be required to build the access roads (see further details below).

Traffic and pedestrian details

- The sidewalk on the east side of De Grassi Street will be closed during access road operation. Traffic control personnel will be available to direct traffic and pedestrians.
- Sidewalks on Queen Street East, Strange Street, and on the west side of De Grassi Street will remain open.
- Traffic control personnel and Paid Duty Officers will assist pedestrians with crossing the street.
- Four traffic control personnel will be present when trucks enter and exit the corridor.
- Trucks will use main roads to access the site as per the approved haul routes.

What to expect

- Construction fencing, safety barriers and warning signage will be posted around each access road.
- Residents and businesses will notice construction crews, equipment, installation of safety hoarding and material deliveries near the construction areas shown on the image above.
- Trucks entering and exiting the access roads on a regular basis, and hauling excavated materials via the access roads.
- Work may be delayed due to weather conditions or unforeseen circumstances.

About the project

- 15.6-kilometre subway line that will make it faster and easier to travel within Toronto and beyond.
- 15 stops and more than 40 transit connections, including GO, TTC, and more.
- Approximately 30 minutes from one end of the line to the other.
- 28,000 fewer cars on the road each day.

Contact us:

Call us 24/7 at: [416-202-5100](tel:416-202-5100)

Write to us at: ontarioline@metrolinx.com

Find us on Twitter, Facebook, and

Instagram: [@ontarioline](https://www.instagram.com/ontarioline)

Visit the website:

www.metrolinx.com/ontarioline

Visit our community offices:

770 Queen Street East (near Queen & Broadview)

General hours:

Mondays, Tuesdays, and Fridays: 9:00 a.m. to 5:00 p.m.

Wednesdays: 1:00 p.m. to 6:00 p.m.

Thursdays: 10:00 a.m. to 6:00 p.m.

Thorncliffe Park:

East York Town Centre

45 Overlea Blvd., Toronto, ON M4H 1C3

Unit 153 (across from the Rogers store)

General hours:

Monday to Friday, 9 a.m. to 5 p.m.