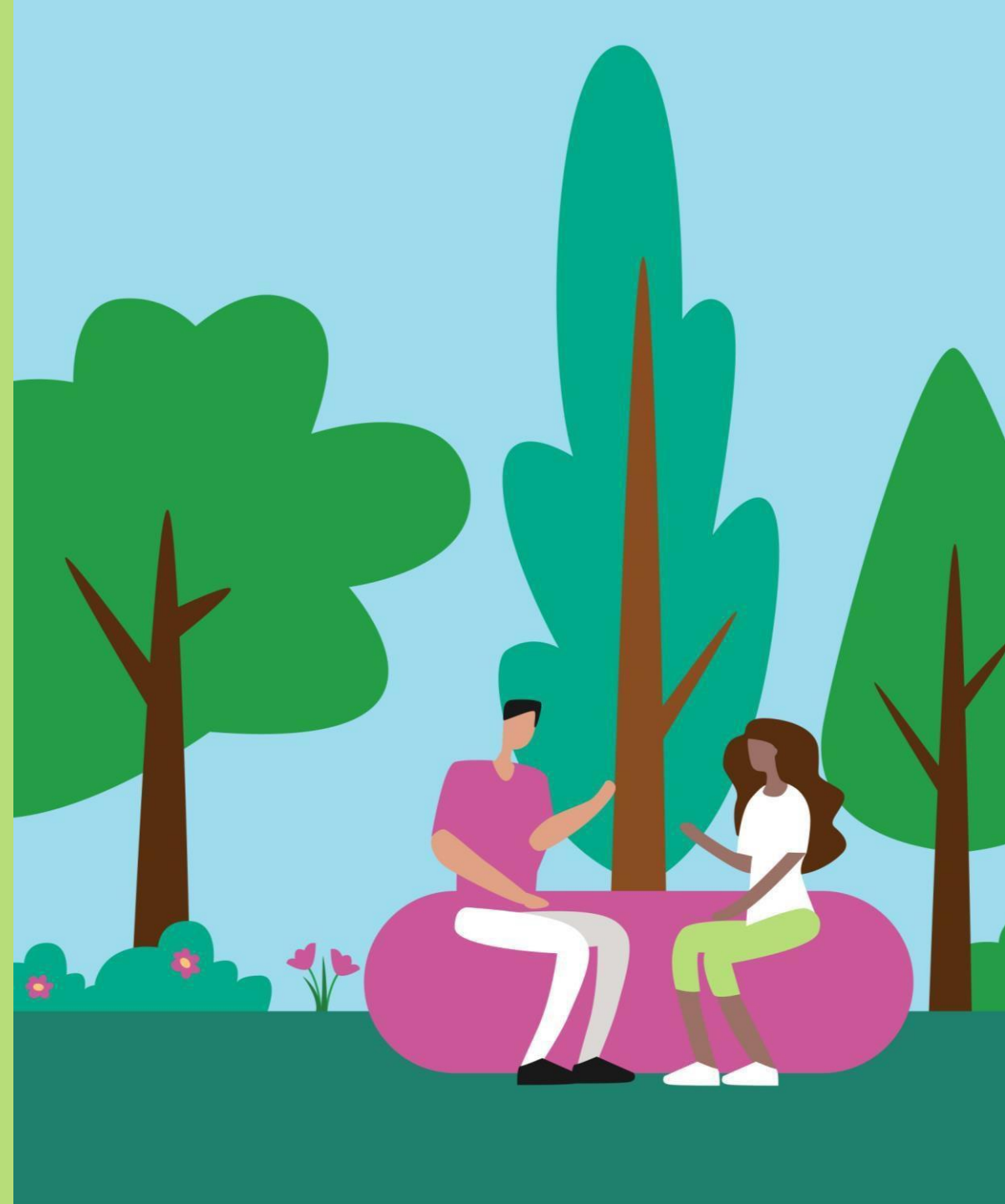


GO Expansion

Davenport Diamond Greenway

June 2025

 METROLINX



Davenport Diamond Greenway

The Davenport Diamond Greenway will be a new public space in Toronto's west end. It will be located under and along the Davenport Diamond Guideway between Bloor Street West and Davenport Road. Crews are setting up on site and preparing the project area for early stages of work. Construction will begin on the following hardscape elements including:

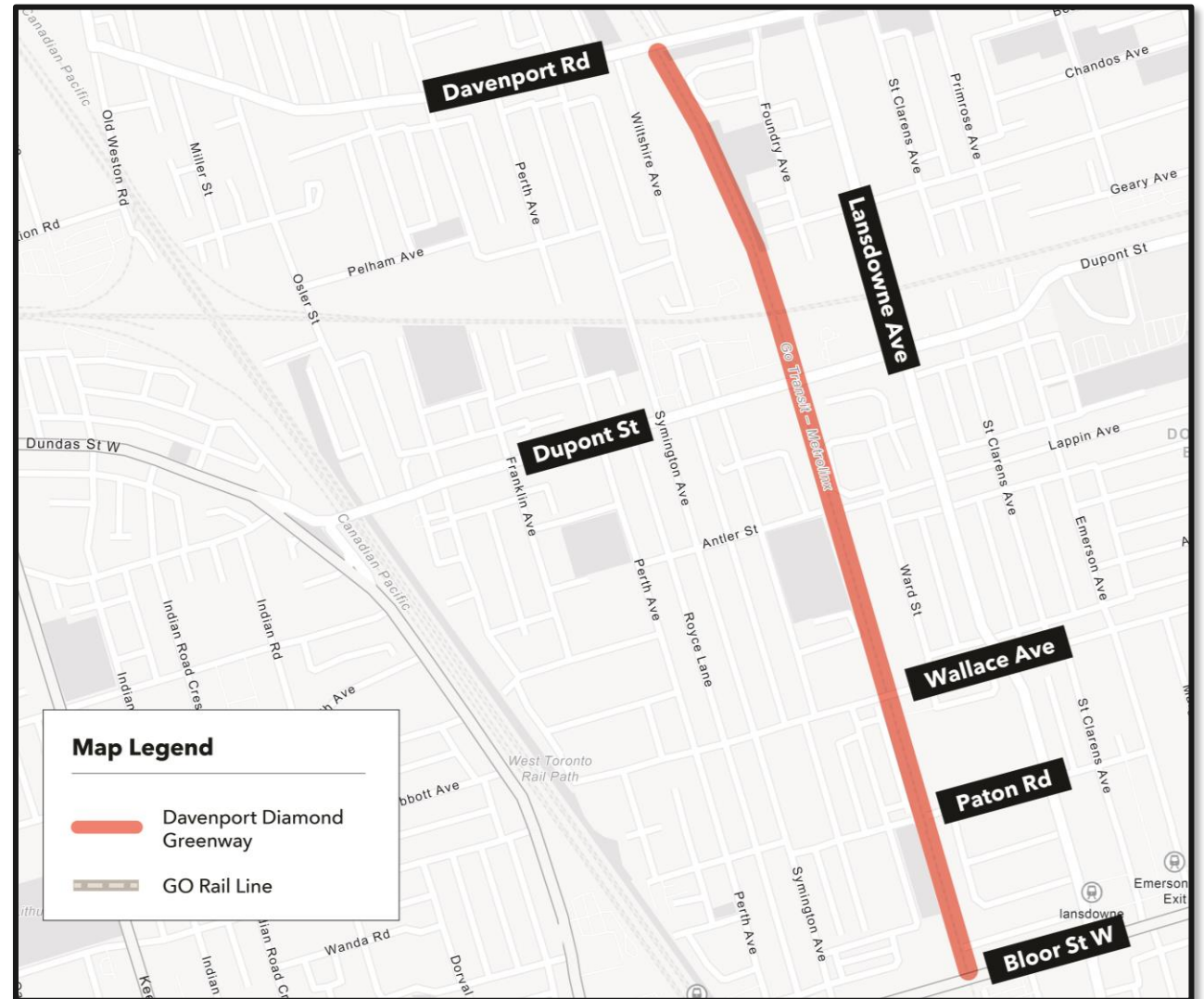
- A fully accessible multi-use path
- A pedestrian bridge above the freight tracks, north of Dupont Street
- Surface improvements at Dupont Bridge Square and the Wallace Avenue Market Square
- Connections to adjacent city sidewalks along east and west paths at Wallace Avenue, Sarnia Avenue, Campbell Park, Dupont Street, Davenport Village Park and Davenport Road



Greenway Update

Metrolinx is committed to delivering the Davenport Diamond Greenway project. We continue to work with our partners at Canadian Pacific Rail, the City of Toronto, Toronto Hydro, and Hydro One on pre-construction activities to prepare for early stages of work. We anticipate preliminary work to start June 23.

Community members can subscribe to the Toronto West newsletter at metrolinx.com/subscribe for future updates.



Davenport Greenway Phases Approach

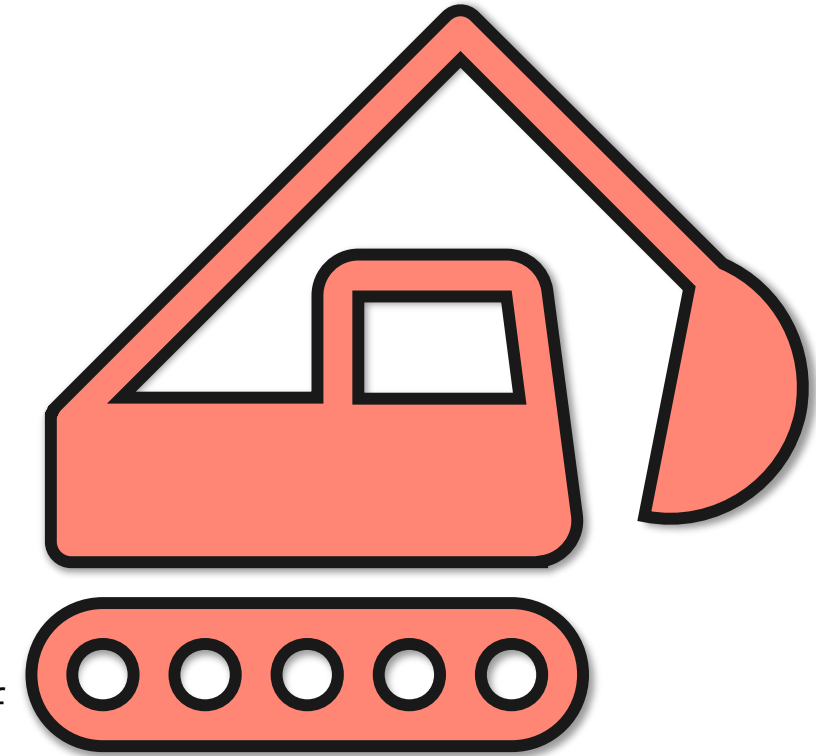
Construction Phases - Community Update

Phase 1: Backbone Hardscaping Construction

- Multi-Use Path (MUP)
- Dupont Bridge Square
- Wallace Avenue Market Square
- Dupont Street and Pedestrian Bridge over CP Rail
- Davenport Rd connection

Phase 2: Softscape Construction *(Following hardscaping)*

- *Soft landscaping*
- *Urban design features and public realm elements*
- Advance notice will be shared ahead of each phase. Phase 2 will begin once an Operations & Maintenance agreement is in place with the City of Toronto. Regular updates will continue throughout construction, and the final completion date will be communicated once confirmed.



Phase 1 - Early Works

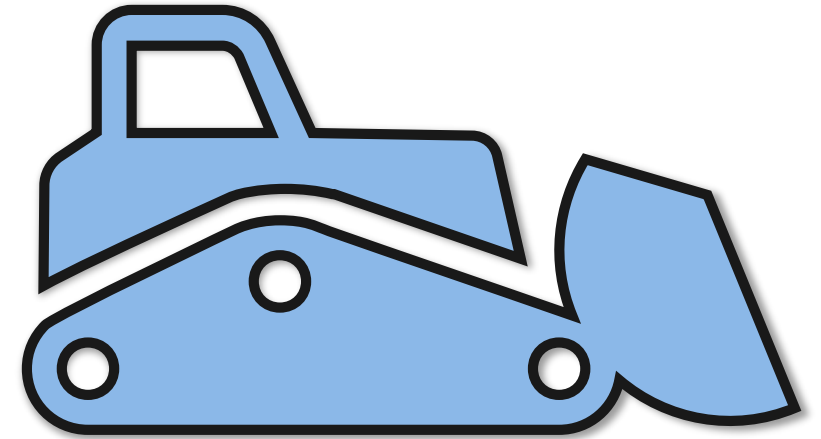
Early works will begin as early as June 23 to prepare the work areas for construction.

This work includes the following:

- Site surveying for work around the job site.
- Site set up: Mobilize trailers, access controls, laydown and storage area, fencing, and signage.
- Tree Protection Zone (TPZ) - Installation of tree protection zones.
- Dupont sidewalk Demolition and relocation of Toronto Hydro Streetlights

Backbone Hardscape Construction Elements

- MUP
- Dupont Bridge Square
- Wallace Avenue Market Square
- Dupont Street and Pedestrian Bridge over CP Rail
- Davenport Rd connection



Multi-Use Path

Description of work: The MUP extends from Paton Road to Davenport Road, running beneath the elevated guideway structure along the Metrolinx Barrie GO Rail Corridor. This continuous, accessible corridor is designed to support safe and active transportation for pedestrians and cyclists.

- **Key Elements:**
 - **Trail Construction:** Asphalt-paved MUP with appropriate markings, and safety features, maintaining a consistent width for shared pedestrian and cyclist use.
 - **Lighting Installation:** Pedestrian-scale LED light fixtures strategically placed along the trail to ensure safety, visibility, and user comfort during low-light conditions. All lighting complies with Crime Prevention Through Environmental Design (CPTED) principles and energy-efficient design standards.
 - **Urban Design & Safety Features:** Integration of trail railings, bollards
 - **Accessibility & Connectivity:** Seamless connections to cross streets at Paton Road, Wallace Avenue, Dupont Street, and final linkage to Davenport Village Park, with compliant ramps and surface grading throughout.

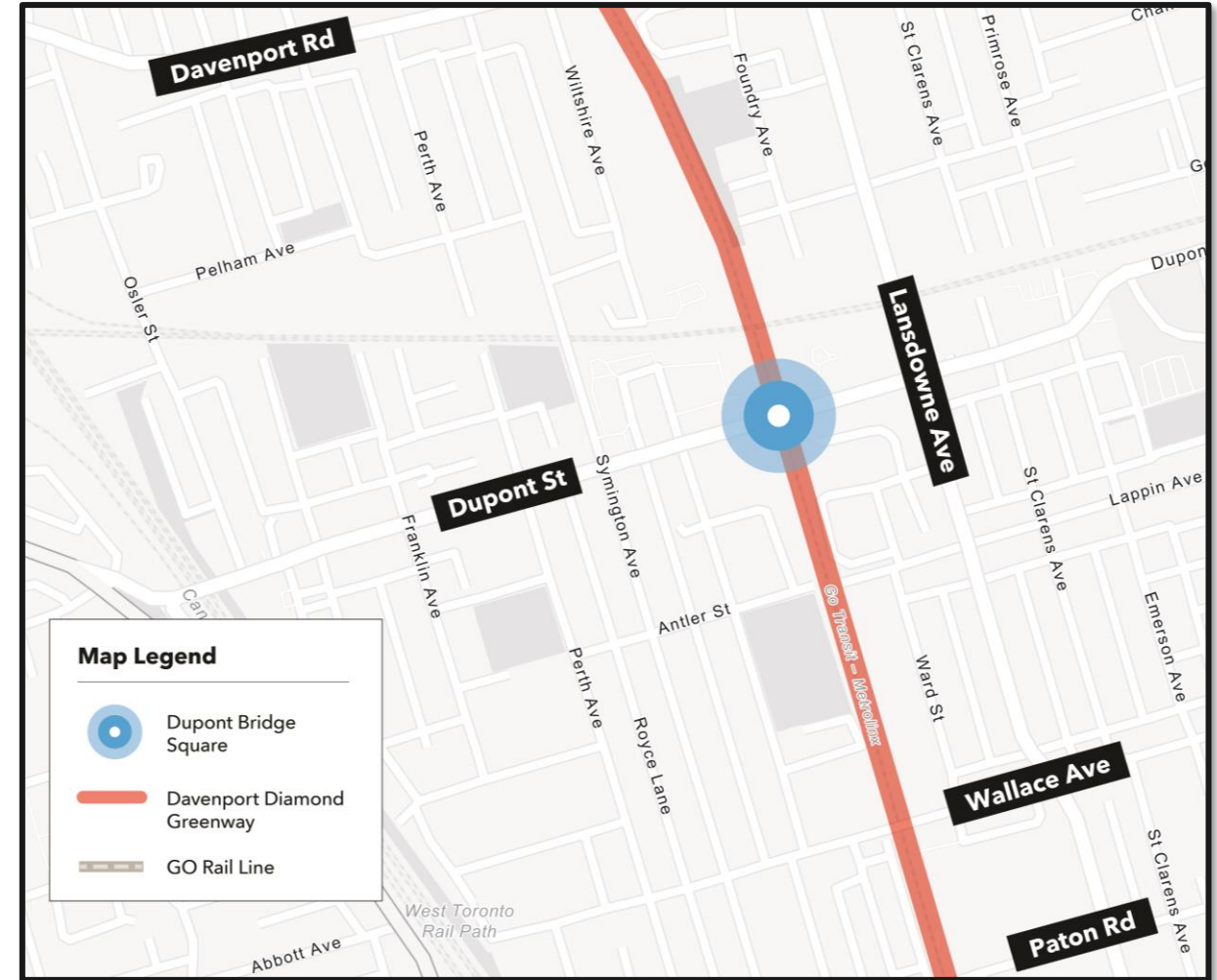


Dupont Bridge Square and elevated sidewalks

Description of work: Dupont Bridge Square is a key urban design feature within the Davenport Diamond Greenway project, situated beneath the elevated guideway at Dupont Street. It serves as a pedestrian-focused public space that enhances connectivity, safety, and community experience within the MUP corridor and is connected to Dupont Street via elevated south sidewalks

Key Elements:

- **Public Realm Space:** Development of a welcoming plaza beneath the elevated guideway.
- **Lighting Installation:** Installation of architecturally integrated LED lighting fixtures under the bridge and along the adjacent MUP to improve visibility, safety, and aesthetics during evening hours. Lighting design follows CPTED guidelines and supports a vibrant, safe atmosphere.

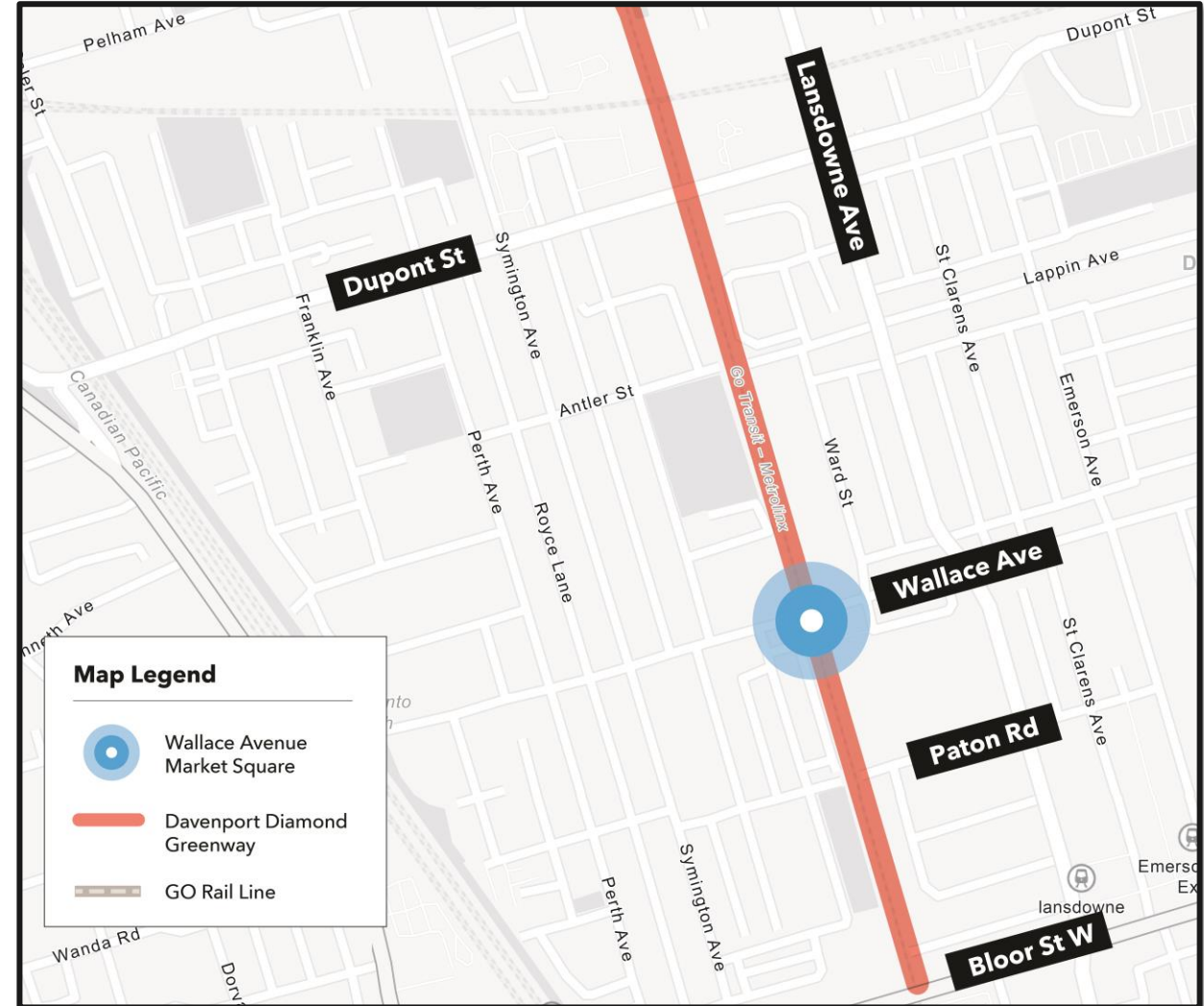


Wallace Avenue Market Square

Description of work: Wallace Avenue Market Square is a signature community space within the Davenport Diamond Greenway project, located adjacent to the Wallace Avenue crossing beneath the elevated Davenport Guideway. This public plaza is designed to support social interaction, local activities, and placemaking along the MUP corridor.

Key Elements:

- **Public Plaza Development:** Construction of an open-public square.



Dupont Street and Pedestrian Bridge over CP Rail

Description: Bridge seamlessly connects MUP users through a constrained urban corridor, improving safety and ensuring continuous, accessible movement along the route.

Key Elements:

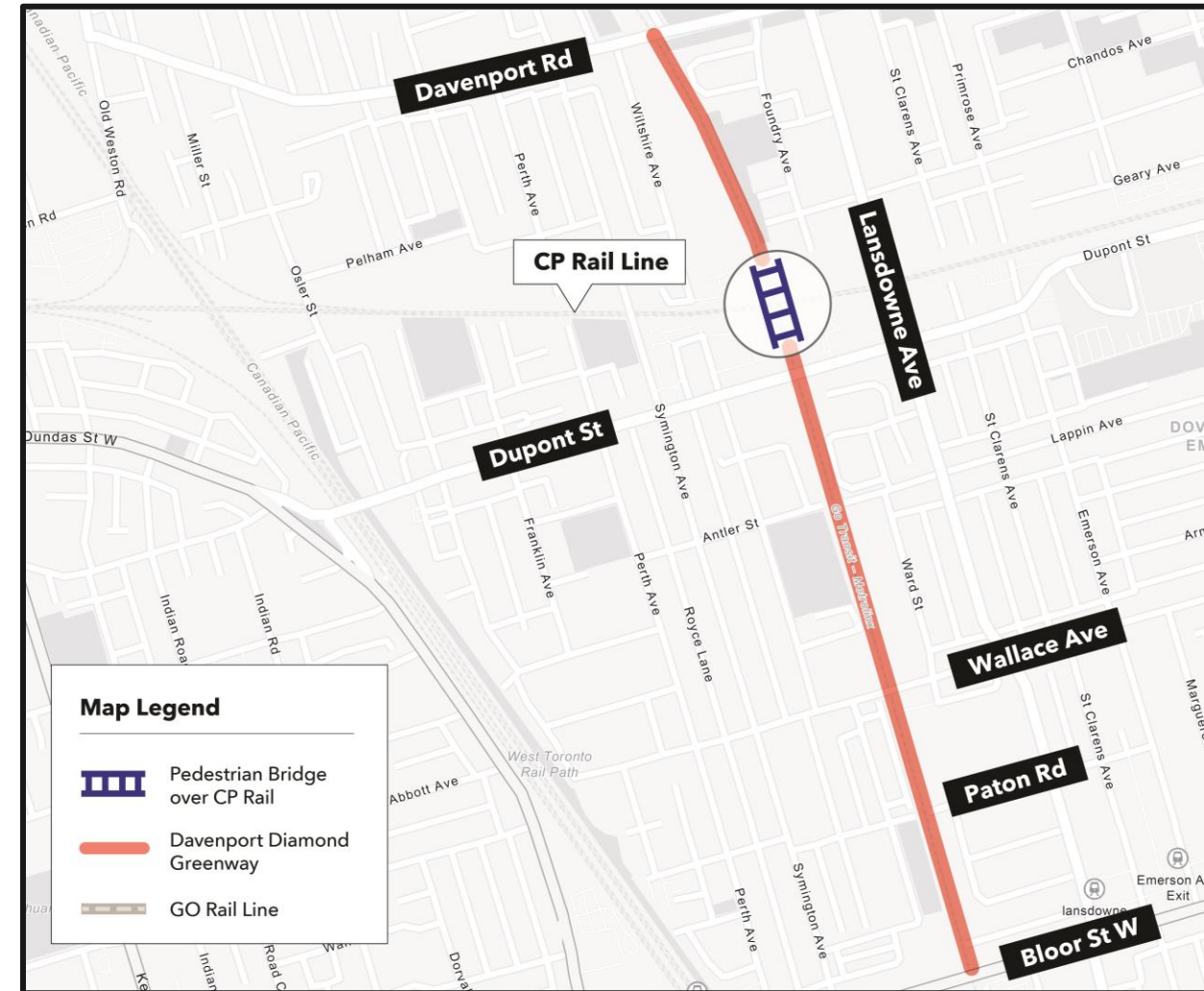
- **Dupont Street South Side Elevated Sidewalk**

- Elevated concrete sidewalk with guardrails and safety fencing.
- Integrated LED lighting for visibility and safety.
- Fully accessible with compliant slope and tactile indicators.
- Ensures safe passage alongside active rail and road infrastructure.

Key Elements:

- **Pedestrian Bridge over CP Rail**

- New steel truss pedestrian bridge over CP Railway.
- Barrier-free access with ramps and landings.
- Handrail-integrated lighting for nighttime use.
- Connects MUP to Davenport Village Park.
- Sidewalk connecting Dupont Street at road-level to the Davenport greenway at Dupont bridge.

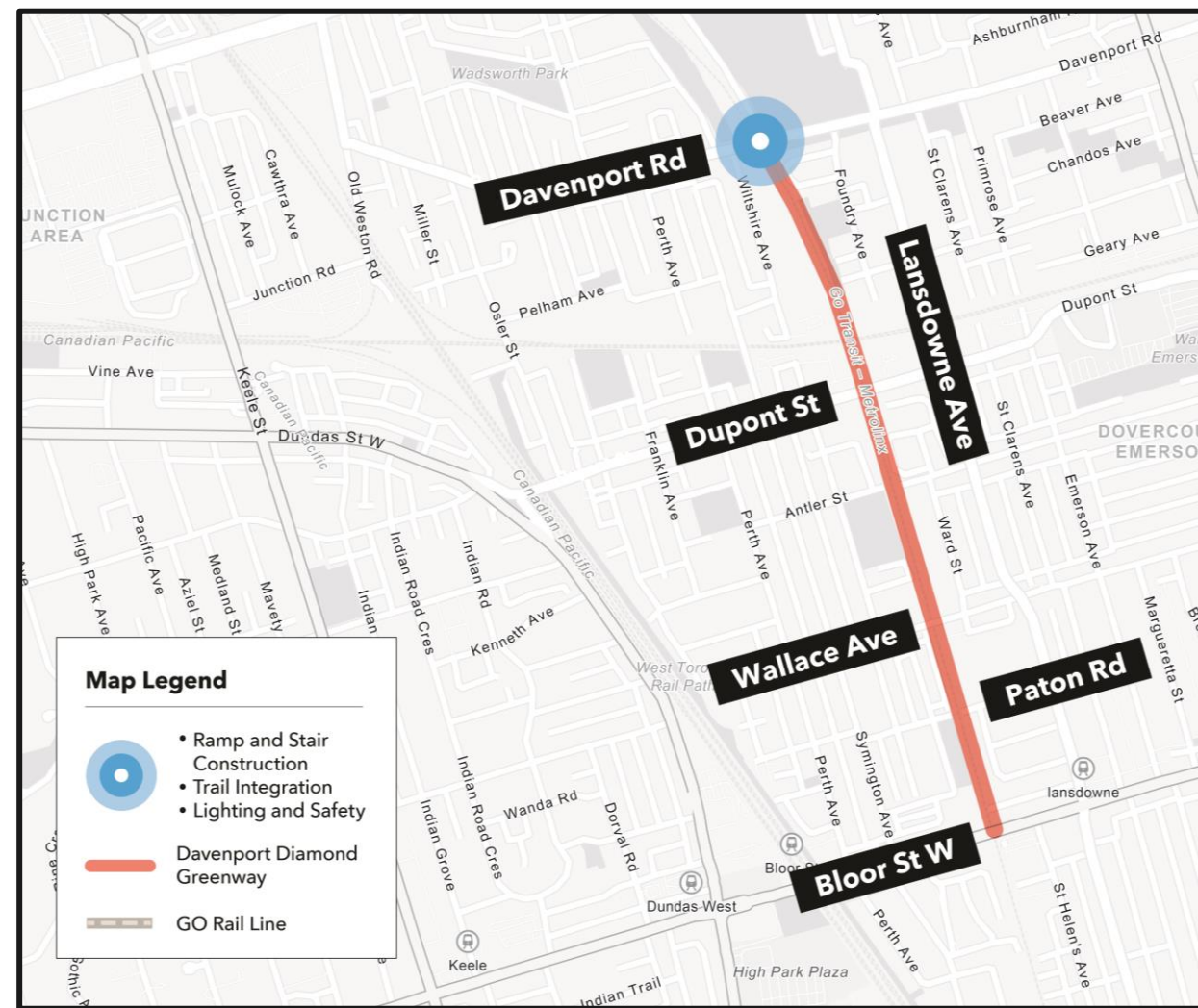


Integration at Davenport Rd

Description: The Davenport Road connection forms the northern terminus of the MUP within the Davenport Diamond Greenway project, providing safe and accessible access to surrounding neighborhoods.

Key Elements:

- **Ramp and Stair Construction:**
 - Barrier-free ramp with compliant slope and landings.
 - Concrete stairway with handrails for direct pedestrian access.
 - Integrated with retaining walls and landscaped zones.
- **Trail Integration:**
 - Seamless connection between the MUP and Davenport Road.
 - Direct link to the new pedestrian bridge over CP Rail.
 - Supports multi-modal use (pedestrians, cyclists, mobility devices).
- **Lighting and Safety Features:**
 - Pedestrian-scale lighting along the ramp and stairway.
 - Safety railings, tactile indicators, and non-slip surfacing.



Mitigation Measures

To reduce construction impacts on nearby residents and businesses, the following measures will be in place:

- **Noise Control:**
 - Limit noisy work during daytime Hours.
 - Use of quieter equipment and noise barriers.
- **Dust Suppression:**
 - Regular watering of work areas.
 - Covered trucks and debris management.
- **Traffic & Safety:**
 - Clear signage and safe pedestrian detours.
 - Maintain access to homes and businesses.
- **Work Hour Adjustments:**
 - Minimize evening/weekend work for Major Construction works like Installation of Ped. Bridge over CP Railway.
 - Advance notice for disruptive activities.
- **Environmental Protection:**
 - Tree and landscape protection.
 - Proper material handling and disposal.



COMMUNITY ENGAGEMENT

Updates will be communicated to the community via:

- Canada Post Mail Drops
- Bi-weekly Toronto West e-newsletter
- Project Website (metrolinx.com/barrie-docs)
- Virtual and In-Person Public Meetings
- Community Pop-ups
- Toronto West Phone Number: 416-202-6911
- Toronto West email: TorontoWest@metrolinx.com
- X: @GOExpansion

Cette présentation est disponible en français sur demande. Si vous êtes intéressé, veuillez envoyer un courriel à TorontoWest@metrolinx.com

