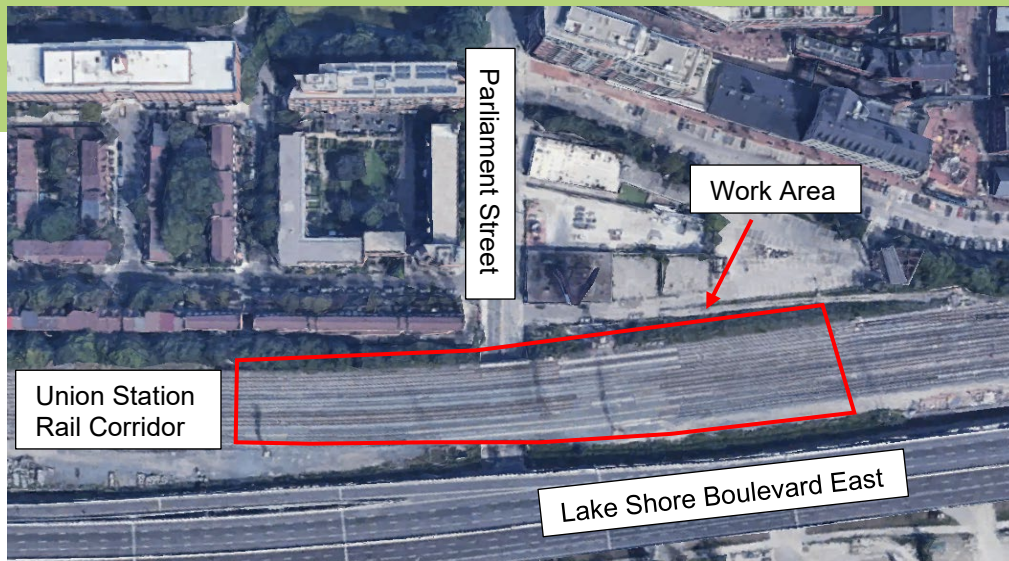


# Harbour Lead Track Remediation - Union Station Rail Corridor

July 14 - 27, 2025 (timeline subject to change)



## What is happening?

From July 14 - 27, 2025 (timeline subject to change) track remediation work will occur along a section of the east side of the Union Station Rail Corridor. This work will occur overnight in the work area shown in the map above. There will not be pedestrian or traffic impacts. The remediation work will include the use of a tamping machine, a stabilizer, and a ballast regulator, thus resulting in overnight noise impacts.

## What to Expect

- Noise (overnight work)
- Construction equipment including the use of a tamping machine, stabilizer, and ballast regulator. Some residents may experience noise and vibration from this work.

## Hours of Work

- 8:00 p.m. – 5:00 a.m. between July 14 - 27, 2025,

## Location of Work

- East side of the Union Station Rail Corridor between Jarvis and Cherry Streets, concentrating on Parliament Street area as illustrated on map above.

## Community Engagement

- Metrolinx has a dedicated community engagement team in place that works with residents and businesses in the Toronto East area.
- If you have any questions, please contact us using the information provided below.

## Long-Term Benefits

The East Track Enhancements are being completed as part of the Union Station Enhancement Project and larger GO Expansion Program.

We're removing and relocating infrastructure on the south side of the Union Station Rail Corridor east of Union Station and widening the rail bridges that pass over Lower Jarvis and Lower Sherbourne Streets.

The East Track Enhancements will pave the way for two additional sections of track to be installed along the southside of the Union Station Rail Corridor, to the east of Union Station which will increase capacity and allow for future electrification as part of the larger GO Expansion Program.

Work will take place within the rail corridor between Union Station and the Don Yard Maintenance Facility, located to the east. Work outside of the rail corridor will mostly be limited to the areas at Jarvis and Sherbourne Streets.

After the completion of the East Track Enhancements, Metrolinx will lay tracks, modernize the signalling system and electrify core segments of the GO rail network.

## Questions

If you have any questions or concerns about this work, please contact us any time at [TorontoEast@metrolinx.com](mailto:TorontoEast@metrolinx.com) or (416) 202-3900.

For more information on GO Expansion in your community, visit our website at [Metrolinx.com/GoExpansion](https://www.metrolinx.com/GoExpansion).

Please scan the QR Code above to subscribe to our weekly e-Newsletter for updates. We appreciate your ongoing patience and understanding of this necessary work. Dates subject to change.



### Contactez-nous :

- ✉ Écrivez-nous à l'adresse suivante : [torontoeast@metrolinx.com](mailto:torontoeast@metrolinx.com)
- 🐦 Retrouvez-nous sur Twitter [@GOExpansion](https://twitter.com/GOExpansion)
- 🌐 Visitez le site Web : <https://www.metrolinx.com/fr/projets-et-programmes/expansion-de-go>
- ✉ Available in English on request. If you are interested, please send an e-mail to: [torontoeast@metrolinx.com](mailto:torontoeast@metrolinx.com)