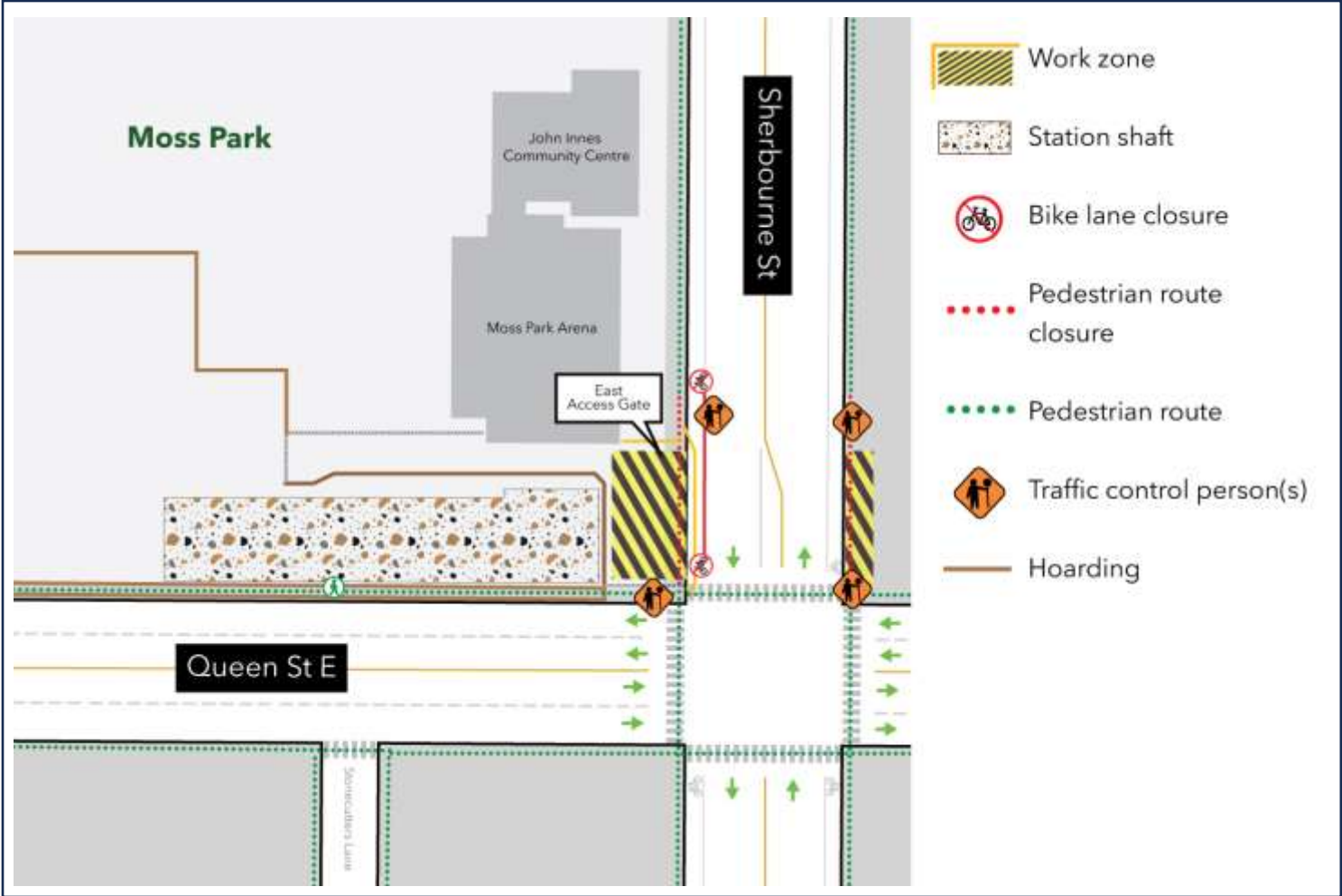


# Pole removal on Sherbourne Street

**Expected start date:** As early as July 7 2025  
**Expected duration:** Up to one week  
**Hours of work:** 8:00 a.m. to 6:00 p.m., weekdays and weekend, Saturday, as required

## Map of work area:



## What is happening?

As part of ongoing construction of the Ontario Line and the future Moss Park station, crews will be removing a decommissioned hydro pole.

The works will be carried out in stages and will require intermittent temporary bike lane and sidewalk closures on Sherbourne Street, northbound and southbound, at Queen Street East, during the work period.

## What to expect

- Intermittent temporary closure of the southbound and bicycle lane on Sherbourne Street north of Queen Street East.
- Intermittent temporary closure of the west and east sidewalk on Sherbourne Street southbound, north of Queen Street East.
- Traffic flag-persons will assist with pedestrian, cyclist and vehicular traffic, with two-way traffic always maintained.

- Residents will see equipment moving around the work zone and hear construction noise from various machinery including saw cutting equipment, hydrovac truck, boom truck and various other equipment required to carry out the removal.
- No impacts to be expected to hydro services to the area community
- Work zones to be cleared of any equipment and materials at the end of each shift.
- Additional work hours may be required to allow teams to complete consecutive works. Advance notice will be provided.
- Working hours are not expected to extend beyond 11:00 p.m.
- Crews will arrive to site prior to the start of works to set up equipment.
- To reduce the impact to residents and businesses in the area, mitigation measures have been put into place, which include water suppression, noise and vibration monitoring, no overnight work.
- Signage will be in place to assist transit users, pedestrians and traffic through the work zones.
- Work may be postponed or rescheduled due to unforeseen circumstances.
- All necessary construction permits have been obtained.
- For more information about upcoming station work please see [metrolinx.com/Ontarioline](https://www.metrolinx.com/Ontarioline) or sign-up for the e-newsletter.
- Learn more about the measures we take to keep communities safe as we build more transit connections: [metrolinx.com/KeepingCommunitiesSafe](https://www.metrolinx.com/KeepingCommunitiesSafe)

## About the Ontario Line

- 15.6-kilometre subway line that will make it faster and easier to travel within Toronto and beyond.
- 15 stops and more than 40 connections to other transit, including GO train, subway, LRT, streetcar, and bus lines.
- Less than 30 minutes from one end of the line to the other.
- 28,000 fewer car trips on the road each day.

<b>Contact us:</b> Call us 24/7 at: <a href="tel:416-202-5100">416-202-5100</a> Write to us at: <a href="mailto:ontarioline@metrolinx.com">ontarioline@metrolinx.com</a> Find us on X, Facebook, and Instagram: <a href="https://www.instagram.com/ontarioline">@ontarioline</a> Visit the website: <a href="https://www.metrolinx.com/ontarioline">www.metrolinx.com/ontarioline</a>	<b>Visit our community offices:</b> <b>770 Queen Street East (near Queen &amp; Broadview)</b> General hours: Mondays, Tuesdays, and Fridays: 9:00 a.m. to 5:00 p.m. Wednesdays: 1:00 p.m. to 6:00 p.m. Thursdays: 10:00 a.m. to 6:00 p.m.	<b>Thorncliffe Park:</b> East York Town Centre 45 Overlea Blvd., Toronto, ON M4H 1C3 Unit 153 (across from the Rogers store) General hours: Monday – Friday, 9:00 a.m. to 5:00 p.m.
--	---	--

Disponible en français sur demande. Si vous êtes intéressé, veuillez envoyer un courriel à [OntarioLine@metrolinx.com](mailto:OntarioLine@metrolinx.com)