

Barrie GO Line: Signal Construction

July 7 – September 12, 2025*

**Dates subject to change as a result of unforeseen circumstances or inclement weather*

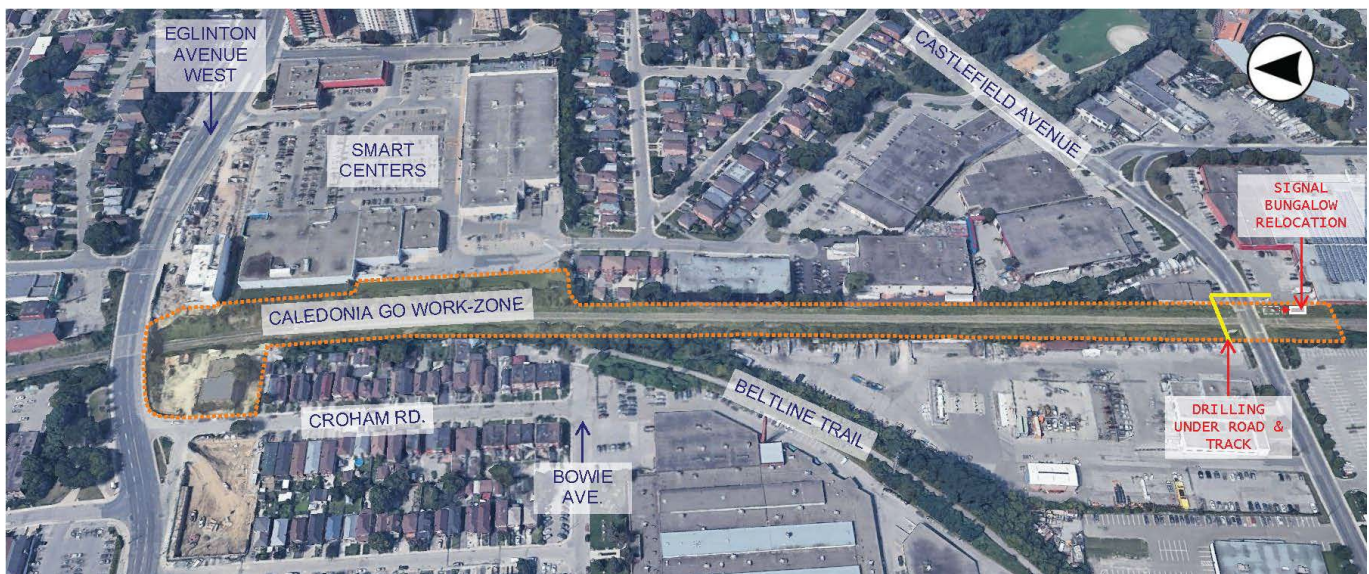


Figure 1: Approximate area of work zone. Not to scale. Metrolinx image.

What Is Happening

As part of works along the Barrie GO Line, Metrolinx crews will be conducting signal system upgrades. Activities will include excavations, installing geotechnical monitoring points, cable and secondary conduit installations, and the installation of foundations to support a new signal tower and equipment building. Work will also include directional drilling at two locations (under the tracks and at Castlefield Avenue crossing) to install conduits without disrupting the ground surface.

Work is scheduled to occur during nighttime hours from 8:00pm – 5:00am. Overnight work will be intermittent and not continuous. We understand that overnight work may be disruptive. Metrolinx will make every effort to minimize disruption where possible.

Project Overview

GO service is expanding to serve you better – with more frequent service, more stations, cleaner technology, and more connections. Our goal is to deliver more than 10,000 train trips a week across the entire network. You won't need a schedule because you know the next train will be coming soon. GO Expansion will transform the GO rail network from a commuter service into a two-way, all-day rapid transit network.

WHAT TO EXPECT

- Crews will be using heavy machinery such as vacuum trucks, excavators, dump trucks, and other construction equipment to complete the work. This may lead to the occurrence of noise, vibrations, dust, and site lighting.
 - Noise and vibration impacts will be mitigated with limited idling and monitoring.
 - Dust will be mitigated with filter cloths.
 - Lighting will be limited to task lighting only.
- Crews will take all reasonable measures to minimize disturbances to residents and businesses.

HOURS OF WORK

- Work will take place overnight from 8:00am to 5:00am.
- Work will be intermittent night work.

LOCATION OF WORK

- Work will primarily occur within the rail corridor in the highlighted work zone (see Figure 1).
- Castlefield Avenue Crossing: directional drilling will take place at the intersection of Castlefield Avenue and the rail corridor.
- All work will occur within Metrolinx property.

PEDESTRIAN DETAILS

- There are no pedestrian impacts related to this work.
- Please continue to exercise caution around active construction sites.

TRAFFIC DETAILS

- There are no major traffic impacts.

COMMUNITY ENGAGEMENT

- Metrolinx has dedicated community engagement teams available to connect with residents and businesses.
- If you have any questions, please see the contact information below for the Toronto West Community Engagement team.

Information as of: June 27, 2025

This notice can be translated into a different language upon request by emailing us at TorontoWest@metrolinx.com

Cet avis est disponible en français sur demande. Si vous êtes intéressé, veuillez envoyer un courriel à TorontoWest@metrolinx.com

Contact Us:

- ☎ Call us: 416-202-6911
- ✉ Write to us at: TorontoWest@metrolinx.com
- ✂ Find us on X [@GOExpansion](https://twitter.com/GOExpansion)
- Visit the website: metrolinx.com/barrie
- Subscribe to our e-blast: metrolinx.com/subscribe

