

Maple GO: Daytime Sub-Ballast Corridor Work

Tuesday, July 8, 2025 to Mid-August 2025 from 7:30 a.m. to 4:30 p.m.

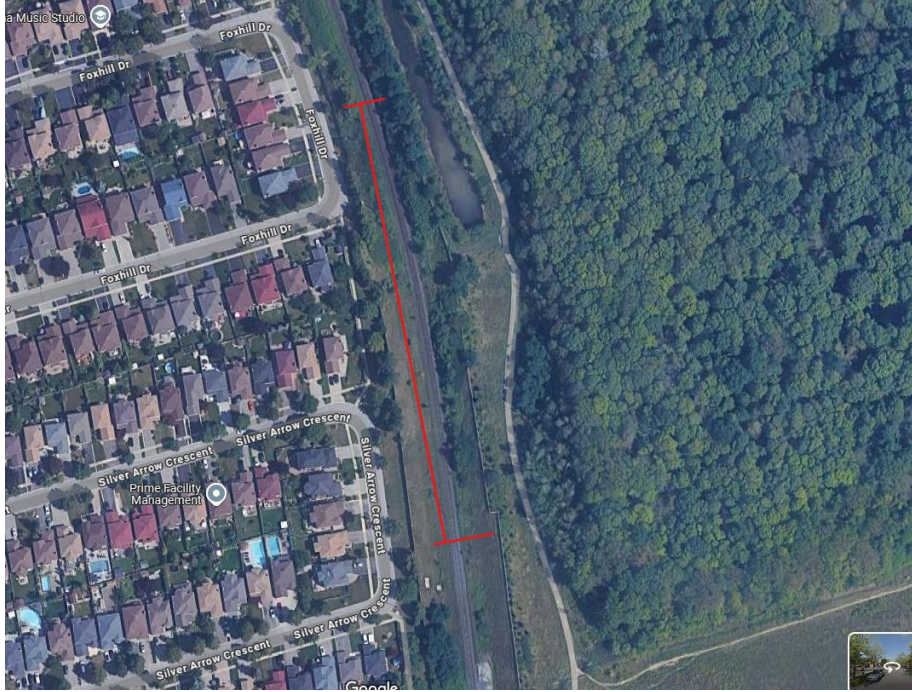


Figure 1: Approximate area of sub-ballast work. Not to scale. Metrolinx image.

What Is Happening

To support station enhancements at Maple GO, Metrolinx will be undertaking sub-ballast works to implement new rail infrastructure improvements such as re-ditching, while also ensuring the correct slopes for the tracks and installing rail stabilization materials. This work will consist of digging, sloping, and implementation of new track stabilization materials, using an excavator, dozer, and compactor, while dump trucks, and other equipment remove excess soil from the corridor between Foxhill Drive and Silver Arrow Crescent.

Truck access and movements will occur through the Foxhill Drive and Ridgefield Crescent community. Work will occur during the daytime hours, beginning at or after 7:30 a.m., and will continue throughout the day until approximately 4:30 p.m. Active work will be conducted within the rail corridor, and flagging will be in place for delivery of materials.

For the French version of this notice, please visit www.metrolinx.com/barrie-docs-fr.
Pour la version française de cet avis, veuillez visiter www.metrolinx.com/barrie-docs-fr.

WHAT TO EXPECT

- Metrolinx will be conducting sub-ballast works in the vicinity of Foxhill Drive and Silver Arrow Crescent, within the GO rail corridor (see Figure 1).
- Access to the rail corridor will be through Foxhill Drive and Ridgefield Crescent.
- This work is required as part of GO Expansion to accommodate the future double track along the Barrie corridor.
- Various machinery will be used, including an excavator, dozer, compactor, and dump trucks.
- Nearby residents should expect some noise associated with the excavation work, soil loading, and truck movements.
- Contractors will take reasonable precautions to minimize disturbances to residents.
 - Rubber mud mats will be placed at access points and street sweepers to maintain streets.
 - Traffic control personnel to direct equipment, such as deliveries at access points.
 - Signage will be posted to warn of construction operations.
 - Vehicles are equipped with audible back up alarms for safety purposes.
 - Possible generation and accumulation of dust and/or dirt due to construction operations. To be addressed using street sweepers.
 - Noise and vibration monitoring has been implemented to assess impact of operating equipment and construction operations.

HOURS OF WORK

- Work will occur between 7:30 a.m. and 4:30 p.m., from July 8 to mid-August 2025.

LOCATION OF WORK

- Sub-ballast works will occur in the redlined area in the above Figure 1.

PEDESTRIAN DETAILS

- There will be no pedestrian impacts.

TRAFFIC DETAILS

- There will be no traffic impacts.

TRANSIT IMPACTS

- This work will not impact GO service at Maple GO or along the Barrie line.

COMMUNITY ENGAGEMENT

- We thank you for your patience and cooperation as we strive to bring you enhancements in the vicinity of Maple GO station.
- We have a dedicated community relations team in place to work with residents and businesses in the York Region. If you have any questions or concerns about this work, please contact us anytime at **YorkRegion@metrolinx.com**.

As with all construction, work may be adjusted, rescheduled or extended due to weather conditions or unforeseen circumstances.

Comme pour toute construction, les travaux peuvent être ajustés, reportés ou prolongés en raison des conditions météorologiques ou de circonstances imprévues.

Contact Us:

☎ Call us: 416-202-4453

✉ Write to us at: YorkRegion@metrolinx.com

✂ Find us on X: [@GOExpansion](https://twitter.com/GOExpansion)

• Visit the website: metrolinx.com/barrie

• Subscribe to our e-blast: metrolinx.com/subscribe