

# LAND ACKNOWLEDGEMENT

Metrolinx acknowledges that we connect communities by building and operating transit within the traditional lands of the Anishinaabe, the Haudenosaunee and the Huron-Wendat peoples, for whom these lands continue to have great importance.

Treaties between First Nations and governments cover these lands, and the promises contained in these Treaties remain relevant to this day.

Metrolinx and its employees are committed to understanding the history of these lands and the continued impacts of colonization and take responsibility for actions to advance reconciliation.

Metrolinx will continue to seek the knowledge, expertise and experience of Indigenous partners and commits to doing business in a manner that is built on a foundation of trust, respect, and collaboration.



# AGENDA

## 1. **Welcome** (5 minutes)

- Land Acknowledgement
- Safety Moment

## 2. **Construction Updates** (30 minutes)

- Advanced Works - Overlea Boulevard
- West Don Crossing - Beth Neilson Drive to E.T. Seton Park
- Beth Neilson Underpass
- Don Valley Crossing - Don Valley
- Operations Maintenance & Storage Facility - Thorncliffe Park
- Elevated Guideway and Stations - Overlea Boulevard
- Ontario Line Truck Safety Plan

## 3. **Community-led Discussion** (25 minutes)

## 4. **Next Steps** (5 minutes)

## Safety Moment: Stay Alert, Don't Get Hurt

Distractions are one of the leading causes of accidents. Whether it's checking a text while walking, wearing headphones in busy areas, or simply rushing to get somewhere, a moment of inattention can lead to injury.

### Tips to stay alert:

- Pause before entering active work zones or crossing streets.
- Avoid using your phone while walking or navigating through high-traffic areas.
- Make eye contact with equipment operators and drivers before crossing their path.
- Stay aware of your surroundings—look out for trip hazards, overhead work, or sudden changes in your environment.

**Remember:** Your safety starts with awareness. A few extra seconds of caution can prevent a serious incident.



# **Ontario Line**

# **Thorncliffe Park**

# **Construction Liaison Committee**

**June 26, 2025**

## Session Guidelines

We greatly appreciate the community members who are here to take part in this public session.

To ensure that everyone can contribute to a positive and safe community experience, all participants shall adhere to the following *Code of Conduct*:

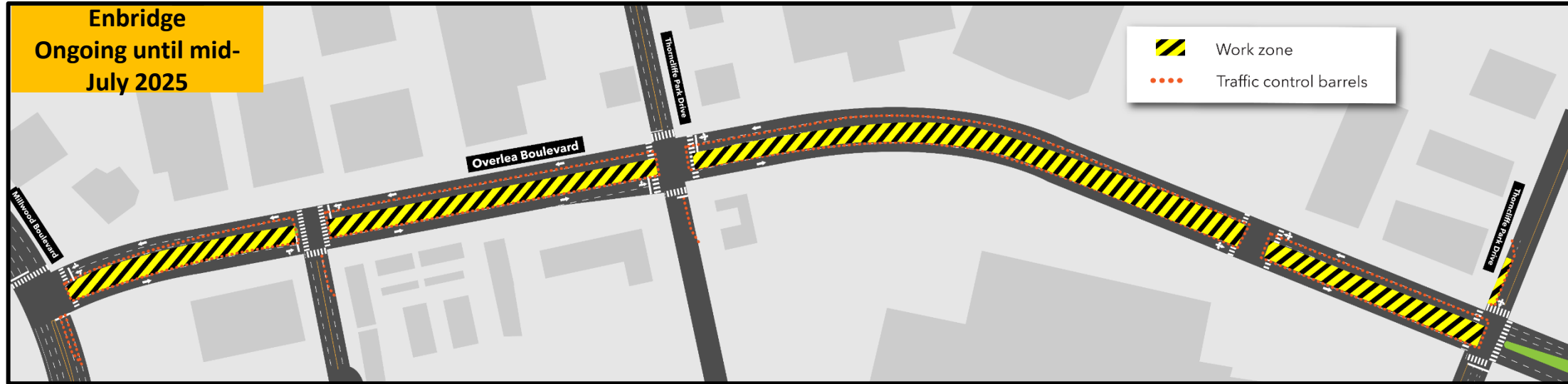
- Treat the presenters and participants with respect and understanding
- Acknowledge and appreciate the diversity of individuals and their situations
- Refrain from supporting or engaging in any form of discriminatory behaviour

**Metrolinx is committed to fostering a safe and respectful environment.**

**We encourage respectful and constructive communication.**

# Advanced Works

# Overlea Boulevard Utility Relocations - Ongoing until mid-July 2025



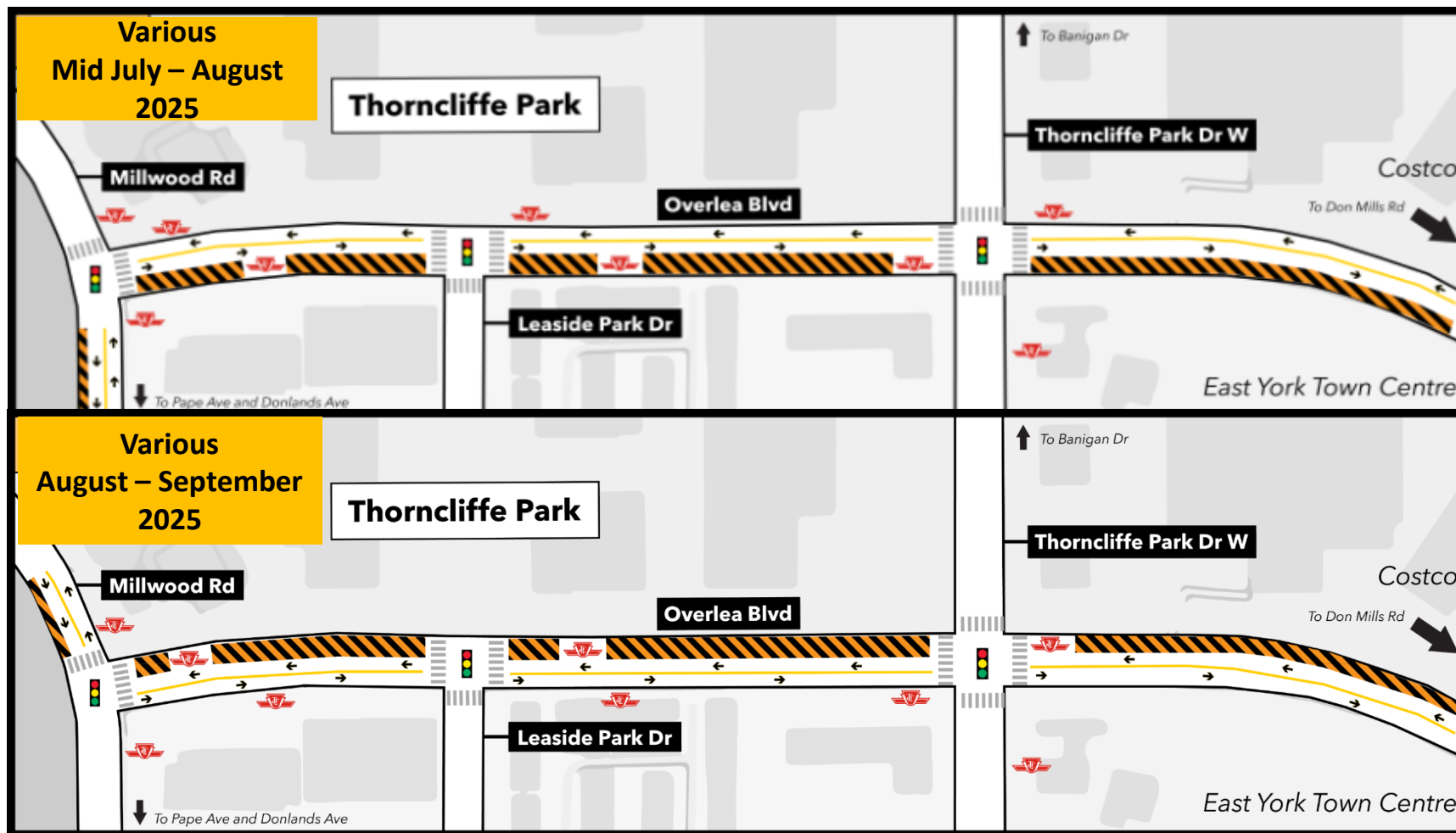
**Enbridge :** Civil works are ongoing to decommission and install natural gas regulation stations and pipelines. Most of the work zone is on Overlea Boulevard, and work is currently ongoing on Overlea Boulevard between Thorncliffe Park Drive East and Thorncliffe Park Drive West.

## Traffic Implications

- Single lane closure on some parts of Overlea Boulevard.
- One lane of traffic on Overlea Boulevard will be maintained in each direction.
- At least one paid duty officer (PDO) and traffic control person will be present as required.



# Overlea Boulevard Utility Relocations - Mid July to Fall 2025



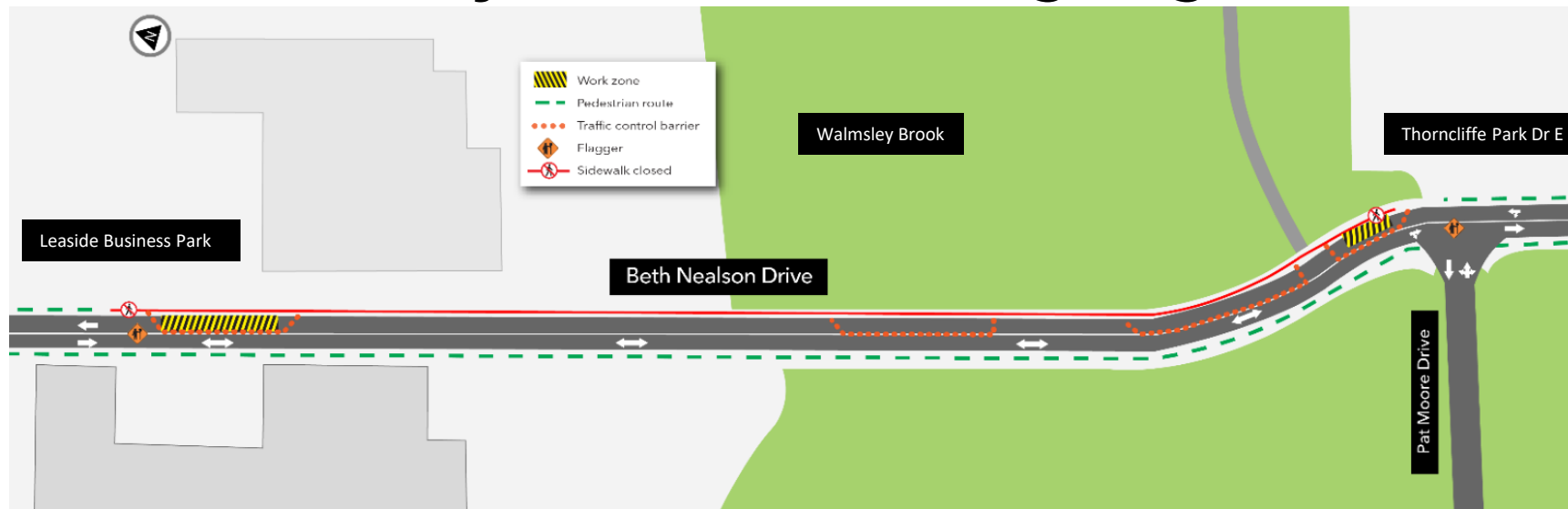
- GIP will return to Overlea Boulevard in mid-July 2025, to complete the remaining watermain and sewer tie-in works.
- Water service impacts are expected and will be scheduled overnight to limit service impact.
- This work will be completed utilizing localized traffic control plans to limit the impact to traffic.
- Turns will be allowed in both directions where currently allowed.
- Once watermain works are completed. GIP will complete boulevard construction, temporary streetlight installation and final paving works.

## Traffic Impacts

- One lane of traffic available in each direction.
- Left and right turns at intersections will be maintained.
- Dedicated bus turn out available when possible.



## Beth Neilson Drive Utility Relocations - Ongoing to December 2025



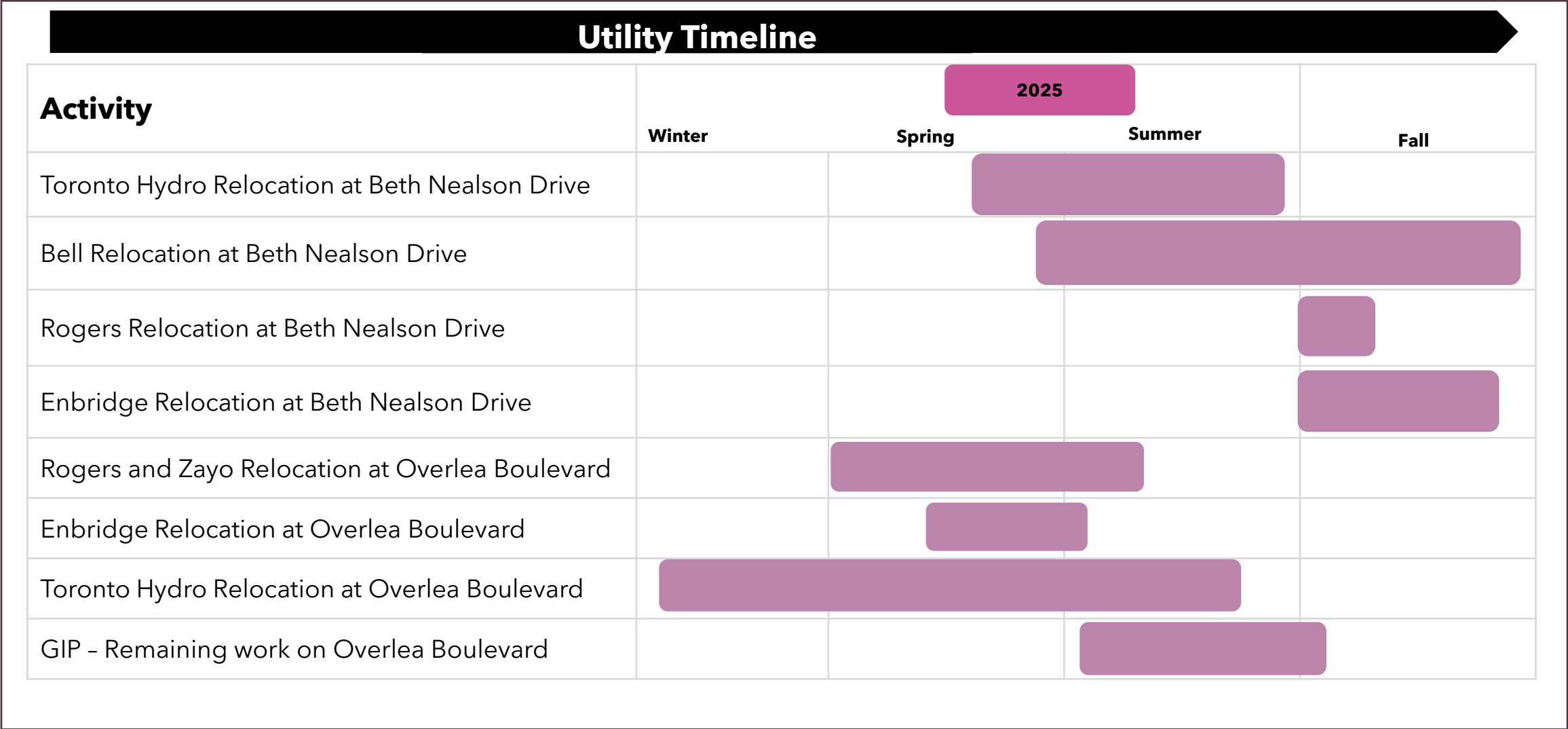
### Bell

- Bell Canada is carrying out civil work to relocate existing infrastructure ahead of the road closure.
- Alternating lane closures continue on Beth Neilson Drive to enable construction.
- Bi-directional traffic will be maintained by traffic control personnel.
- When sidewalk closures happen, pedestrians are detoured to the nearest crossing points using signage.

### Enbridge

- Enbridge relocation will begin when Bell completes its relocation. Expected start date is September 2025.
- Enbridge are conducting weekend test-pits to inform design of their construction activity.
- Enbridge design is being finalized but traffic impacts expected are similar to the Bell activity.

# Utility Work Timeline - 2025



# West Don Crossing Works

## West Don Crossing - May to June Progress

- Excavation for the pile cap has begun. A pile cap is a thick concrete pad constructed on top of a group of piles to act as deep foundations for the eventual bridge structure. They serve to transfer loads from the bridge piers and deck to the piles, ensuring structural stability and load distribution.
- Piling activities and caisson works have been completed for 4 of the 5 piers at the West Don Crossing.
- Heavy equipment has been mobilized to site.
- Access road and laydown area continues to be installed for the Pier D1 area. Pier D1 requires an access road given its isolated location between the Don River and the adjacent slope with no preexisting access route suitable for heavy machinery and equipment.
- A 24-hour concrete pour originally scheduled for June 21- June 22 will now occur on July 5 to 6 at the Pier D3 work area.





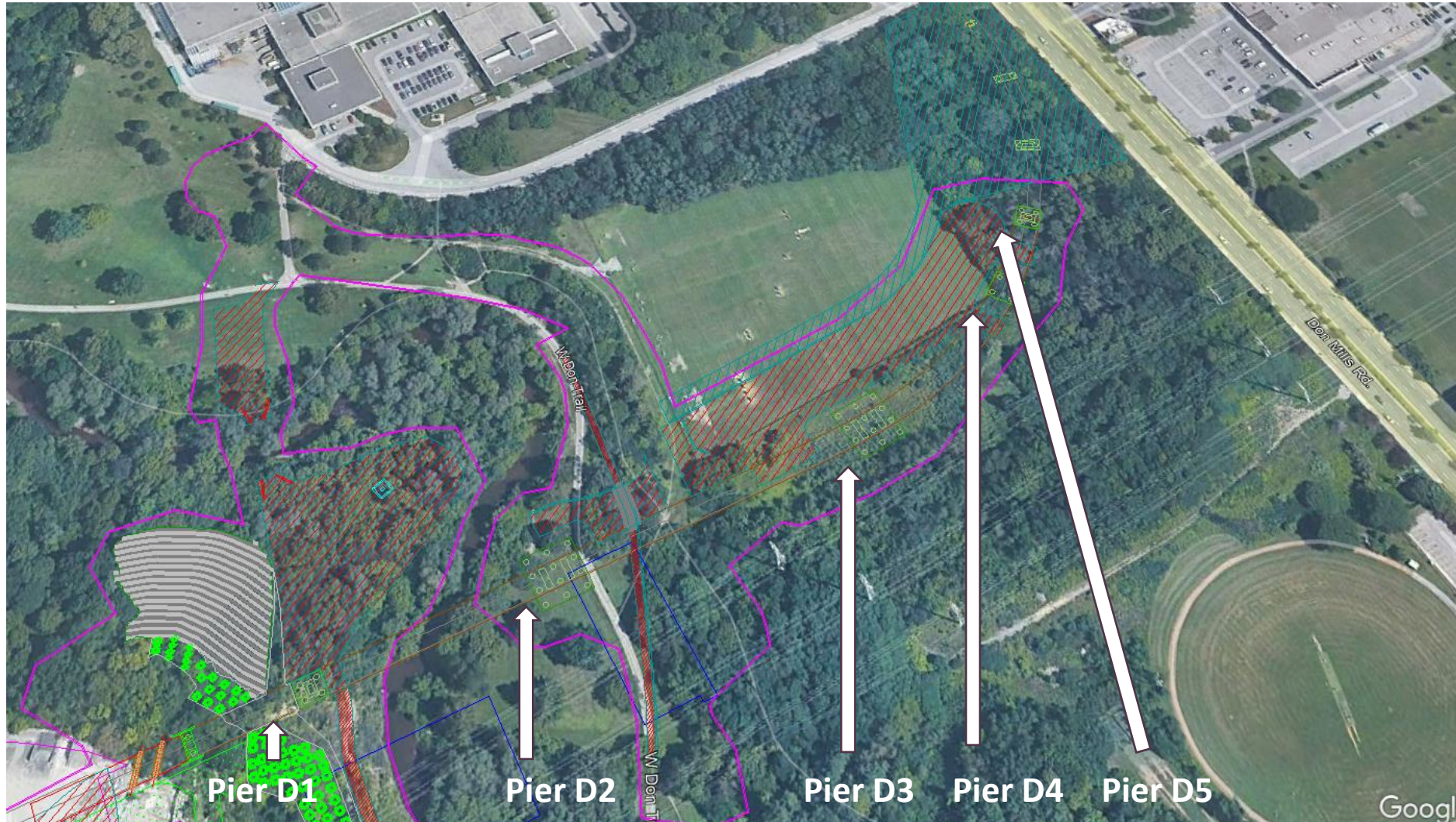
## West Don Crossing - In water works - Update

- To promote slope stability and erosion control within the work area, in water works started on May 20<sup>th</sup>, 2025, and will continue through to September 15<sup>th</sup>, 2027.
- LVB has progressed forward with the installation of a cofferdam in the area to act as a barrier to create a dewatered area for slope stability works. These works are nearly complete.
- Meter bags have started being installed with more to come, and granular has commenced to be applied along the riverbed.





## West Don Crossing - Pier Locations



# Eight Week Look-Ahead: June 2025 to August 2025

#	Activity	Location	Expected Start	Expected Duration	Impact	Hours of Work	Mitigations
1	Foundation excavation and chipping at Pier D2	West Don crossing	May (Ongoing)	1 month	Vibration, noise, air quality	7:00 am 5:30 pm	Vibration monitoring, noise monitoring, air quality monitoring
2	Pier foundation works at Pier D3, D4 & D5 (Ongoing)	West Don Crossing	May (Ongoing)	3 Months	Vibration, noise, air quality	7:00 am 7:00 pm	Vibration monitoring, noise monitoring, air quality monitoring
3	Toe Berm (Ongoing)	West Don Crossing	April (Ongoing)	3 month	Vibration, noise, air quality	7:00 am 5:30 pm	Vibration monitoring, noise monitoring, air quality monitoring
4	Grading D1 Area (Ongoing)	West Don Crossing	May (Ongoing)	3 month	Vibration, noise, air quality	7:00 am 5:30 pm	Vibration monitoring, noise monitoring, air quality monitoring
5	Soil Nailing & Anchor	West Don Crossing	July	6 months	Vibration, noise, air quality	7:00 am 5:30 pm	Vibration monitoring, noise monitoring, air quality monitoring



# **Beth Nealsen**

# **Underpass Works**

## Beth Neilson Underpass - May to June Progress

- Excavation continues in the work area adjacent to Beth Neilson Drive.
- Preparations are underway for upcoming caisson installation works for a track retaining wall adjacent to Beth Neilson Drive.
- Drilling of test caisson piles will begin in late June. Significant impacts are not expected, but noise, dust, and vibration impacts are possible, all of which will be monitored using specialized equipment.
- To ensure safety, flaggers have been mobilized to site to assist in directing construction traffic in and out of the jobsite.



## Beth Neelson Underpass - Work Areas





## Beth Neilson Underpass - Work Areas





## Beth Neilson Underpass - Render



Exterior view of the OMSF looking west from Beth Neilson Drive.

# Eight Week Look-Ahead: June 2025 - August 2025

#	Activity	Location	Expected Start	Expected Duration	Impact	Hours of Work	Mitigations
1	Excavation for track retaining wall	Beth Nealson Underpass	May 12 (Ongoing)	3 months	Vibration, noise, air quality	7:00 am-5:30 pm	Vibration monitoring, noise monitoring, air quality monitoring
2	Caisson installation (west side)	Beth Nealson Underpass	Mid-July (Tentative)	2 months	Vibration, noise, air quality	7:00 am-5:30 pm	Vibration monitoring, noise monitoring, air quality monitoring

# **Don Valley Crossing Construction Updates**

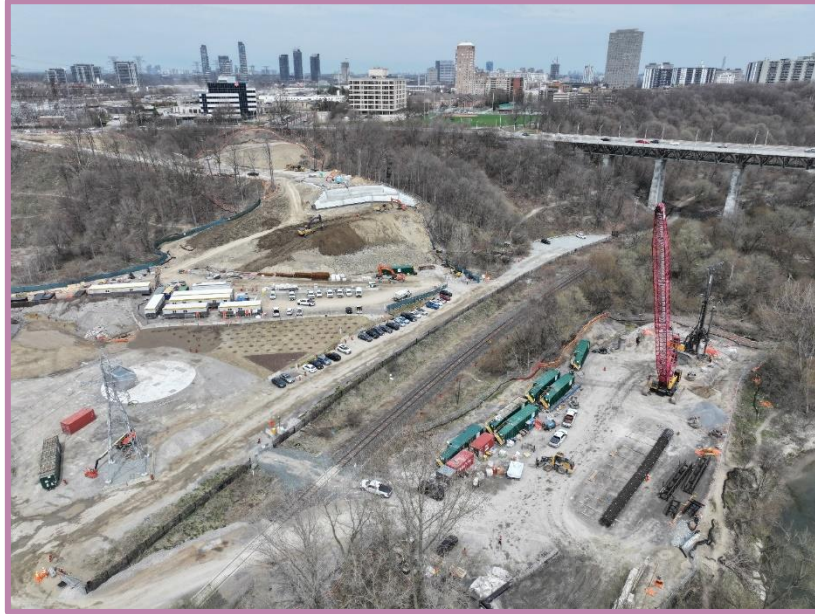


## Don Valley Crossing Scope of Work

- The Ontario Line will emerge from the ground at the eastern embankment of the Don Valley using a tunnel portal structure at Minton Place, south of the Leaside Bridge.
- The line will then travel over the valley on the Don Valley Crossing bridge, connecting to an elevated guideway through Thorncliffe Park.
- A second West Don Crossing bridge will carry the Ontario Line across the valley, over the E.T. Seton Park area, connecting the Thorncliffe Park and Flemington Park guideways and stations.



## Don Valley Crossing –April to June Progress



- Access road and crane pad for Pier A4 and A5 piling operations have been completed. Work is currently underway on the retaining wall and support for excavation.
- Slope stabilization at Pier A3 is in progress.
- Traffic control measures, including the installation of traffic lights on Redway Road and lane closure on Millwood Road, will be in place to efficiently manage traffic flow leading to the Don Valley Crossing work zones.

# Eight Week Look Ahead - June 2025 - August 2025

#	Activity	Location	Expected Start	Expected Duration	Impact	Hours of Work	Mitigations
1	Slope Stabilization	Don Valley Crossing (Pier A3)	January 6, 2025 (Ongoing)	7-8 Months (to August 2025)	Noise, Vibration, Air Quality	7:00 am 5:30 pm	Monitoring noise and air quality levels.  Enacting noise mitigation controls and dust suppression as required.
2	Pier Piling	Don Valley Crossing (Pier A4/A5)	May 26, 2025 (Ongoing)	Four months	Noise, Vibration, Air Quality	7:00 am 8:00 pm	
3	Temporary bridge installation	Don Valley Crossing (Pier A1)	June 10, 2025	Two months	Noise, Vibration, Air Quality	7:00 am 5:30 pm	
4	Concrete chipping of pier piles and pile cap excavation	Don Valley Crossing (Pier A2)	May 2025 (Ongoing)	One month	Noise, Vibration, Air Quality	7:00 am 5:30 pm	

# **Operations, Maintenance and Storage Facility**



# OMSF: Renderings



Main Entrance



Rear View

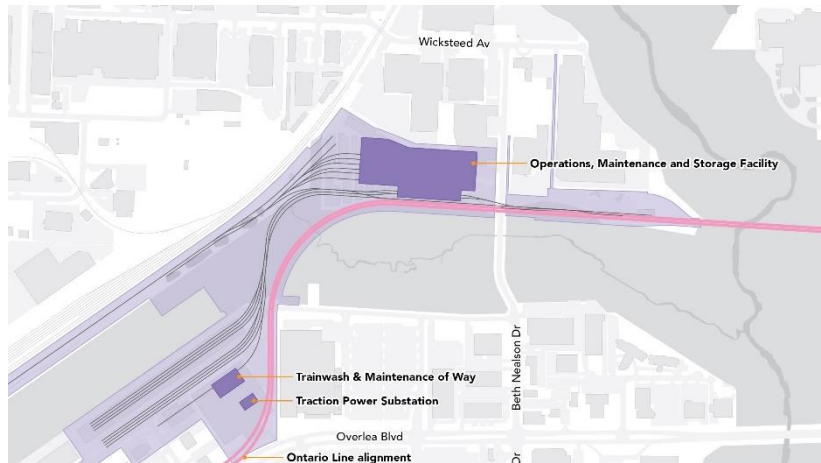




## OMSF: Upcoming Construction



*June 19, 2025 – Early preparation for the retaining wall at the site of the future OMSF on Beth Neilson Drive.*



*June 19, 2025 – Start of excavation of the OMSF foundation.*

- Excavation for the operations, maintenance and storage facility (OMSF) site began on June 16, marking the start of construction of the foundation for the main OMSF building.
- The main OMSF building will be 17,200 m<sup>2</sup> and includes the operations control centre (OCC). Staff will run operations for the entire network from here.
- A large retaining wall is being constructed on both sides of Beth Neilson Drive. On the west side of the road, the preparations for the retaining wall are in place.
- Paving is complete and work is nearly done on the Pat Moore Drive cul-de-sac.

# **Elevated Guideway and Stations Works**



# Demolition of 28 Overlea Boulevard

- Demolition of 28 Overlea Boulevard will start in early-September.
- This work is required to make space for the future Thorncliffe Park Station and Elevated Guideway.
- Work will take place on weekdays during the day (7 a.m. to 7 p.m.) for an expected duration of two months.
- Excavators, trucks, loaders and other construction equipment will be required to complete this work.
- Trucks will enter and exit the site via Thorncliffe Park.
- No traffic, pedestrian, or transit closures are expected.
- Noise, vibration and dust can be expected around the demolition site. Monitoring instruments are in place to manage and mitigate noise, vibration and dust.
- Filter cloth will be installed on fencing and water misting will be implemented to minimize dust.
- Residents and businesses will notice construction crews, equipment, installation of safety fencing and material deliveries near the construction areas.



## Site Safety and Maintenance

- To ensure public safety and minimize disruption, all work zones and construction sites will be enclosed with secure fencing or hoarding. These barriers are designed to clearly separate work zones from public spaces.
- The contractor will deploy site security personnel to monitor and safeguard all work sites.
- Crews will maintain clean, organized, and well-managed sites throughout the duration of construction.



## Pest Control and Prevention Measures

- Pest control will be maintained throughout the duration of construction in line with municipal and industry best practices:
  - **Waste Management:** Regular removal of debris and construction refuse.
  - **Inspection & Monitoring:** Routine inspections will identify any signs of pests or conducive conditions. Prompt responses will follow any sightings or reports.
- If pests are discovered, Contractor will work with Metrolinx on industry standard mitigation measures, such as traps and removing habitat.

# Eight Week Look-Ahead: July 2025 - August 2025

#	Activity	Location	Expected Start	Expected Duration	Impact	Hours of Work	Mitigations
1	Building demolition	28 Overlea Boulevard	September 2025	2 Months	Vibration, noise, air quality	7:00 am 7:00 pm	Vibration, noise and air quality monitoring
2	Site laydown and preparation	Thorncliffe Park Station	July 2025	December 2025	Vibration, noise, air quality	7:00 am 7:00 pm	Vibration, noise and air quality monitoring

# 2025 Construction Look-ahead

Date		Location	Details and Purpose
Summer	Site laydown and preparation	Thorncliffe Park Station	Site laydown preparation includes trailers, site offices and facilities, access roads and hoarding required to facilitate the construction of Thorncliffe Park Station and the Elevated Guideway.  EGS laydown areas are: 10 Overlea Boulevard, 26 Overlea Boulevard, 28 Overlea Boulevard, and 6 Thorncliffe Park Drive.
	Demolition of 28 Overlea Blvd	Thorncliffe Park Station	28 Overlea Boulevard demolition required to clear area for the guideways and Thorncliffe Park Station.
Fall	Piling, support of excavations, pile caps and piers	Overlea Boulevard	Construct support piles that are approximately 3 meters in diameter and 45 meters deep along Overlea Boulevard. The piles will support the piers of the elevated guideway. Piers are approximately 5 meters in height along Overlea Boulevard. The piers will support the superstructure/guideway.
	Tree removals	Overlea Boulevard	Tree removal activities to clear area for the elevated guideway.



# Ontario Line

## Truck Safety Plan Overview

# TRUCK SAFETY PLAN OBJECTIVES

To ensure the safe and efficient movement of construction traffic Metrolinx developed the Truck Safety Plan (TSP) to provide clear targets that guide every decision and action. The following objectives form the foundation of the plan.

- 1. Prioritize public safety**
- 2. Minimize community impacts**
- 3. Ensure regulatory compliance**
- 4. Support operational efficiency**
- 5. Promote transparency and accountability**



# TRUCK ROUTE SAFETY PLAN OVERVIEW

Key considerations used for the selection of **truck routes include, regulatory compliance, road suitability and traffic operations, Community impacts and route flexibility.**

This plan includes criteria and measures to ensure safe and efficient movement of trucks by developing designated routes for each site in collaboration with the City and local stakeholders, including provisions for monitoring compliance and enforcement of routes.

When it is not feasible to conform completely to key considerations, mitigations reduce community disturbances. These **mitigations include, traffic control measures, driver awareness and education, noise and emissions reduction, time of day restrictions, staging and holding areas, targeted enforcement.**

## Monitoring Compliance

Metrolinx is committed to developing and implementing truck routes that prioritize public safety, respect local communities, and support efficient construction operations. This is done through effort such as driver education, inspections, and public input.

## Enforcement and Incident Response

Enforcement and incident response protocols are embedded within the Truck Safety Plan. These protocols reinforce a culture of accountability and safety.

## For more information

Please visit the Metrolinx website here, for our Truck Safety Plan by scanning the QR code or visit: [\*\*Ontario Line Truck Safety Plan Overview\*\*](#)

If you have any questions or concerns regarding truck routes, please call our 24-hour hotline at **416-202-5100** or email us at **ontarioline@metrolinx.com**



# Action Log

# Action Log

#	Questions Asked / Action Item	Response/Resolution	Due Date / Status
1	Metrolinx to present on traffic impact and mitigation plans for construction in Thorncliffe Park.	<ul style="list-style-type: none"><li>Metrolinx to present at the May CLC meeting for Thorncliffe Park.</li></ul>	Completed
2	Metrolinx to share details of guideway construction process.	<ul style="list-style-type: none"><li>Metrolinx to present more detail on the guideway construction process.</li></ul>	Completed
3	Metrolinx to organize a restoration walk.	<ul style="list-style-type: none"><li>On May 24, Metrolinx carried out a restoration walk with residents at Evergreen Brick Works.</li></ul>	Completed



# Discussion

# Contact Us

**Metrolinx will keep the community, residents and businesses informed by providing project updates, seeking input and feedback, and addressing questions and concerns effectively and quickly.**

## Stay connected:

Ontario Line e-newsletter @ [Metrolinx.com/OntarioLine](https://www.metroslinx.com/OntarioLine)

## Events:

Canada Day Event with MP Oliphant and MPP Bowman on 1 July 2025 from 11 am to 2 pm at 5 Leaside Park Drive

## Next CLC:

Thursday, July 31, 2025

## Questions or comments:

[OntarioLine@metrolinx.com](mailto:OntarioLine@metrolinx.com)

24/7 call 416-202-5100

## Follow us on social media:

X / Facebook / Instagram @ OntarioLine



## Visit Us:

East York Town Centre  
45 Overlea Blvd., Toronto, ON M4H 1C3  
Unit 153 (across from the Rogers store)  
Monday to Friday: 9 a.m. to 5 p.m.