

East Harbour Transit Hub: On-going Foundation Work

June 2025 – November 2025*

Dates subject to change due to unforeseen circumstances or inclement weather.

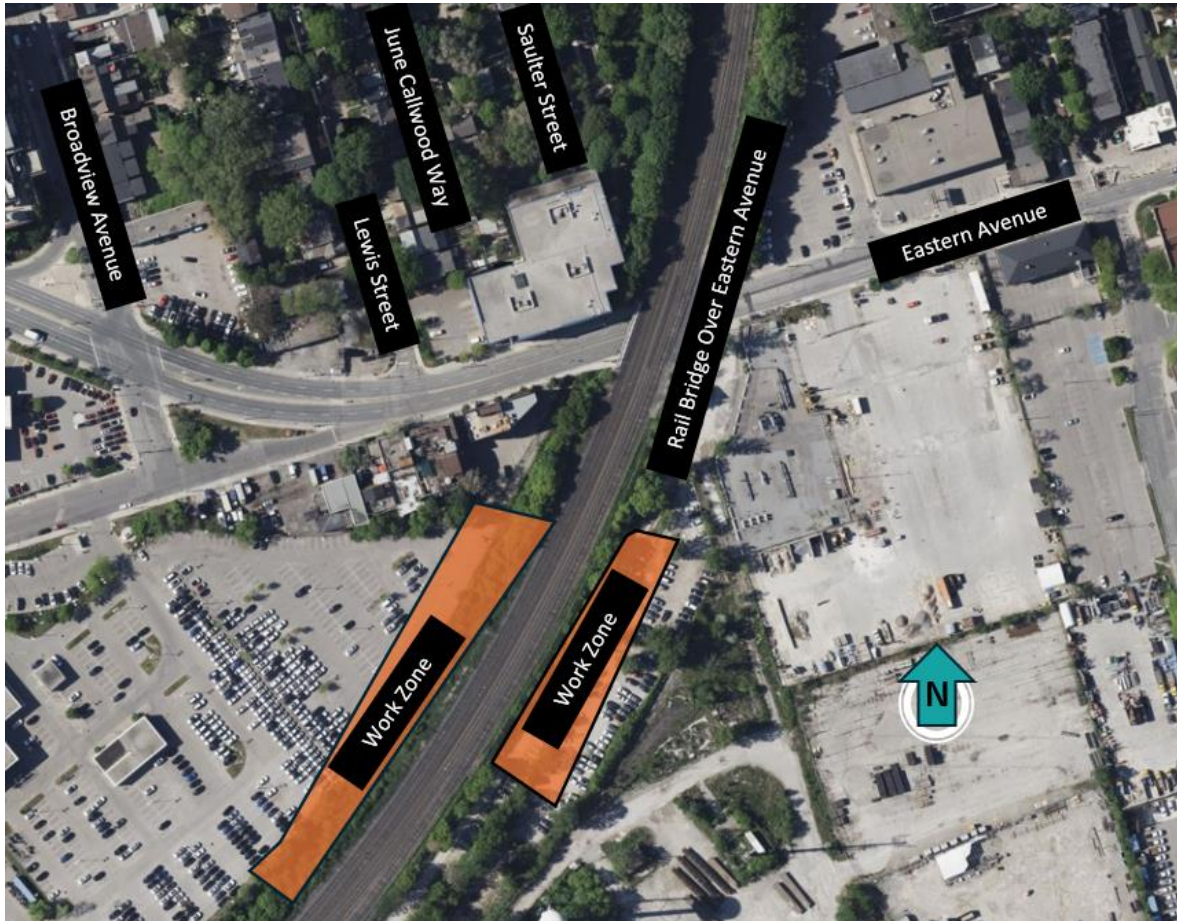


Figure 1: Map showing work zones on Eastern Avenue. For illustrative purposes only. Not to scale.

WHAT'S HAPPENING

Construction crews are continuing to build foundations for the future East Harbour Transit Hub near Eastern Avenue Rail Bridge. Construction for the foundations is expected to continue from June 1st at 7:00AM and finish on November 30th at 5:00PM. Schedule is *subject to change*. This work is expected to produce elevated levels of noise, vibration, and dust. Work will take place during the day from 7:00AM to 7:00PM, Monday to Friday. Weekend work is expected from 7:00AM to 5:00PM on Saturdays and Sunday. Overnight work may also be added, in which case a separate notice will be communicated. Crews will continue noise, vibration, and dust control protocols.

PROJECT OVERVIEW

The new East Harbour Transit Hub will be located just east of the Don River and north of Lakeshore Boulevard East, in the Riverdale neighbourhood. This interchange station, on the Lakeshore East GO line, will provide seamless connectivity to more GO services, the future Ontario line, and the TTC Broadview streetcar, in a corner of the city that is poised for growth. The East Harbour Transit Hub will also divert some of the commuter traffic away from Union Station and will be an alternate station for transferring between transit lines and services.

WHAT TO EXPECT

- Drilling into the earth with large scale drills.
- Concrete trucks will be pouring foundations throughout the course of this work.
- Our operations staff are taking precautions to minimize disturbances to residents, businesses, and commuters, including but not limited to the following:
 - no idling of non-essential equipment
 - scheduling heavy construction during daytime hours
 - pointing lights away from residential windows
 - delineating safe work zones
 - water spraying to control dust.

HOURS OF WORK

- **Daytime hours:** Monday to Friday (7:00 AM to 7:00 PM)
- **Weekend hours:** Saturday and Sunday (7:00AM to 5:00PM, as necessary).
- **Nighttime hours:** Monday to Friday (7:00PM – 7:00AM, as necessary)

LOCATION OF WORK

- Eastern Avenue Rail Bridge

PEDESTRIAN DETAILS

- Pedestrians and cyclists should be vigilant near the work zones and obey all directions from flag persons.
- No additional sidewalk closures are expected for this work.
- Flag operations for equipment access to and from work zones is expected.

TRAFFIC DETAILS

- No road closures/traffic impacts are planned. Drivers should be vigilant near the work zones and obey all directions from flag persons.
- Flag operations for equipment access to and from work zones is expected.

TRANSIT INFORMATION

- For more information, visit [gotransit.com](https://www.gotransit.com).

COMMUNITY ENGAGEMENT

- Metrolinx has a dedicated community engagement team that works with residents and businesses in the Toronto East area.
- If you have any questions, please contact us using the information provided below

Information as of: May 28, 2025

This notice can be translated into a different language upon request by emailing us at TorontoEast@metrolinx.com

Cet avis est disponible en français sur demande. Si vous êtes intéressé, veuillez envoyer un courriel à TorontoEast@metrolinx.com

Contact Us:

- ☎ Call us: **416-202-3900**
- ✉ Write to us at: TorontoEast@metrolinx.com
- ✕ @ Find us on X and Instagram [@GOExpansion](https://www.instagram.com/GOExpansion)
- Visit the website: www.metrolinx.com/eastharbour
- Subscribe to our e-blast: <https://www.metrolinx.com/subscribe>