

Ontario Line

Moss Park Construction Liaison Committee

July 10, 2025



Agenda

Welcome (5 minutes)

- Introductions
- Land acknowledgement
- Safety moment
- Session guidelines

Presentation (25 minutes)

- Construction updates

Feedback and Discussion (30 minutes)

- Keeping you informed



New to the neighbourhood!

Lee B. Johnson Department Store @244 Queen Street East

LAND ACKNOWLEDGEMENT

Metrolinx acknowledges that we connect communities by building and operating transit within the traditional lands of the Anishinaabe, the Haudenosaunee and the Huron-Wendat peoples, for whom these lands continue to have great importance.

Treaties between First Nations and governments cover these lands, and the promises contained in these Treaties remain relevant to this day.

Metrolinx and its employees are committed to understanding the history of these lands and the continued impacts of colonization and take responsibility for actions to advance reconciliation.

Metrolinx will continue to seek the knowledge, expertise and experience of Indigenous partners and commits to doing business in a manner that is built on a foundation of trust, respect, and collaboration.

Session Guidelines

We greatly appreciate the community members who are here to take part in this public session.

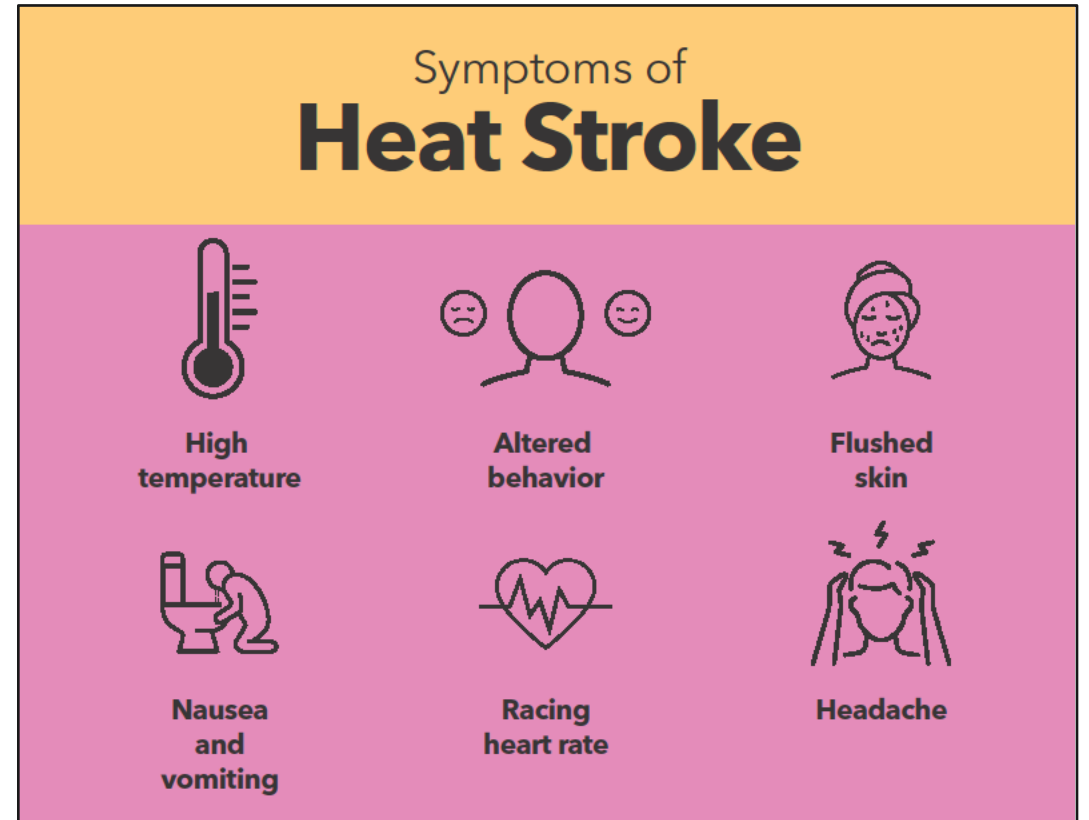
To ensure that everyone can contribute to a positive and safe community experience, all participants shall adhere to the following *Code of Conduct*:

- Treat the presenters and participants with respect and understanding
- Acknowledge and appreciate the diversity of individuals and their situations
- Refrain from supporting or engaging in any form of discriminatory behaviour
- To respect the privacy of CLC members, our employees and contractors, recording the CLC by any means is not permitted including the use of AI minute taking software.

**Metrolinx is committed to fostering a safe and respectful environment.
We encourage respectful and constructive communication.**

SAFETY MOMENT - RISK OF HEAT STROKE

- High temperatures pose a risk of heat stroke, along with deteriorating air conditions.
- Older adults, infants, young children, pregnant people, and those with disabilities should take extra care to mitigate the risks and watch for signs of heat illness. These include swelling, rash, cramps, fainting, heat exhaustion, heat stroke and the worsening of some health conditions.
- If you believe you or someone you know has a high body temperature, has stopped sweating and/or becomes confused or unconscious, call **911**.
- While waiting for help, move the person to a cool place, apply a cool compress to large areas of their skin, and fan the person as much as possible.



Construction Update

CURRENT WORKS

- Permanent station construction is underway, including the installation of structural elements that will form the station's foundation including:
 - Earthing
 - Ground works
 - Permanent slab
 - Waterproofing membrane
- Installation of the tower crane platform and foundation is nearing completion. Once operational, the tower crane will support the efficient and safe movement of materials and equipment within the site. No equipment or materials will be transported over private property.
- **Hours of work:**
Weekdays (Monday to Friday) from 6:30 a.m. to 11 p.m.
Weekends (Saturday) as required from 8 a.m. to 6 p.m.



Trench dug with grounding cable in position

UPCOMING WORKS

Permanent works first steps

- **Waterproofing system:** Permanent waterproofing membranes applied to the existing underground walls to keep water out before any concrete is poured.
- **Base slab construction:** This is the first major structural element - a thick concrete slab that forms the foundation of the future station.
- **Paving of working platform (street level):** At street level, crews will grade and pave a working platform to create a cleaner, more stable surface. The asphalt application will also help manage dust.



Waterproofing system testing at site

Upcoming Work

EIGHT WEEK LOOK-AHEAD: July 10 – September 4, 2025

#	Activity	Expected Start	Expected Duration	Impact	Hours of Work	Mitigations
1	Transition to permanent works	Started/ongoing	Two weeks	Minimal noise, air quality	7 a.m. to 11 p.m. (Monday to Friday with some Saturdays)	Noise wall, hoarding. Dust mitigation includes misting, sweeping. Erosion and sediment control.
2	Tower crane 1 erection	Started/ongoing	One week	Minimal noise	7 a.m. to 11 p.m. (Monday to Friday with some Saturdays)	Noise wall, hoarding.
3	Base slab construction	July 2025	Six months	Minimal noise, air quality	7 a.m. to 11 p.m. (Monday to Friday with some Saturdays)	Noise wall, hoarding. Dust mitigation includes misting, sweeping. Erosion and sediment control.
4	Waterproofing membrane application	July 2025	18 months	Minimal noise, air quality	7 a.m. to 11 p.m. (Monday to Friday with some Saturdays)	Noise wall, hoarding. Dust mitigation includes misting, sweeping. Erosion and sediment control.
5	Tower crane 2 delivery	August 2025	One week	Minimal noise and traffic impact	7 a.m. to 11 p.m. (Monday to Friday with some Saturdays)	Traffic control metrics to help guide the large crane into site.
6	Tower crane 2 erection	September 2025	One week	Minimal noise	7 a.m. to 11 p.m. (Monday to Friday with some Saturdays)	Noise wall, hoarding.

*Note: All dates and times are subject to change as construction planning progresses

2025 CONSTRUCTION LOOK-AHEAD

Timing	Activity	Location	Details and Purpose
Summer	Start of permanent works: invert slab pour, and installation of waterproofing membrane	Full shaft surface area within the site	Installation of waterproof membrane to prevent leaking into the new station. Installation of steel reinforcement and concrete pour to construct the new structural framework of Moss Park Station.
Summer	Tower crane 1 installation	Within the site	Completion of tower crane foundation and tower crane erection.
Fall/Winter	Lining wall & interior elements	Within the site	After the base slab (invert slab) completion, construction of lining wall (outer walls) and interior elements will commence level per level.

*Note: All dates and times are subject to change as construction planning progresses

The **tower mast** being hoisted into position



The **crane cab** being hoisted into position



The crane **jib** nearing final assembly



Discussion



Ontario Line

Calling all businesses: We want to hear from you!



Take this quick and easy survey
to help us best support your
business during construction.



KEEPING YOU INFORMED

Metrolinx will keep the community, residents and businesses informed by providing project updates, seeking input and feedback, while addressing questions and concerns effectively and quickly.

Next CLC meeting: August 14, 2025

Connect with us:

- Zahrah Munas Community Engagement Advisor
Zahrah.Munas@metrolinx.com
437-328-5354
- Mark Clancy, Senior Manager, Community Engagement
Mark.Clancy@metrolinx.com
647-449-2857
- Ontario Line at OntarioLine@metrolinx.com

Email: OntarioLine@metrolinx.com

Telephone 24/7 @ 416-202-5100

Follow us on social media:

Twitter / Facebook / Instagram: @OntarioLine



*Scan here to sign up for
the new and improved
Ontario Line
e-newsletter*



*Scan here to explore
Ontario Line CLC
materials*



Truck Safety Plan

Truck Safety Plan Objectives

To ensure the safe and efficient movement of construction traffic Metrolinx developed the Truck Safety Plan (TSP) to provide clear targets that guide every decision and action. The following objectives form the foundation of the plan.

- 1. Prioritize public safety**
- 2. Minimize community impacts**
- 3. Ensure regulatory compliance**
- 4. Support operational efficiency**
- 5. Promote transparency and accountability**

Truck Route Safety Plan Overview

Key considerations used for the selection of truck routes include: Regulatory compliance, road suitability and traffic operations, Community impacts and route Flexibility.

This plan includes criteria and measures to ensure safe and efficient movement of trucks by developing designated routes for each site in collaboration with the City and local stakeholders, including provisions for monitoring compliance and enforcement of routes. When it is not feasible to conform completely to key considerations, mitigations reduce community disturbances. These mitigations include, traffic control measures, driver awareness and education, noise and emissions reduction, time of day restrictions, staging and holding areas, targeted enforcement.

Monitoring Compliance

Metrolinx is committed to developing and implementing truck routes that prioritize public safety, respect local communities, and support efficient construction operations. This is done through effort such as driver education, inspections, and public input.

Enforcement and Incident Response

Enforcement and incident response protocols are embedded within the TSP. These protocols reinforce a culture of accountability and safety.

For more information

Please visit the Metrolinx website [here](#), for our Truck Safety Plan frequently asked questions.

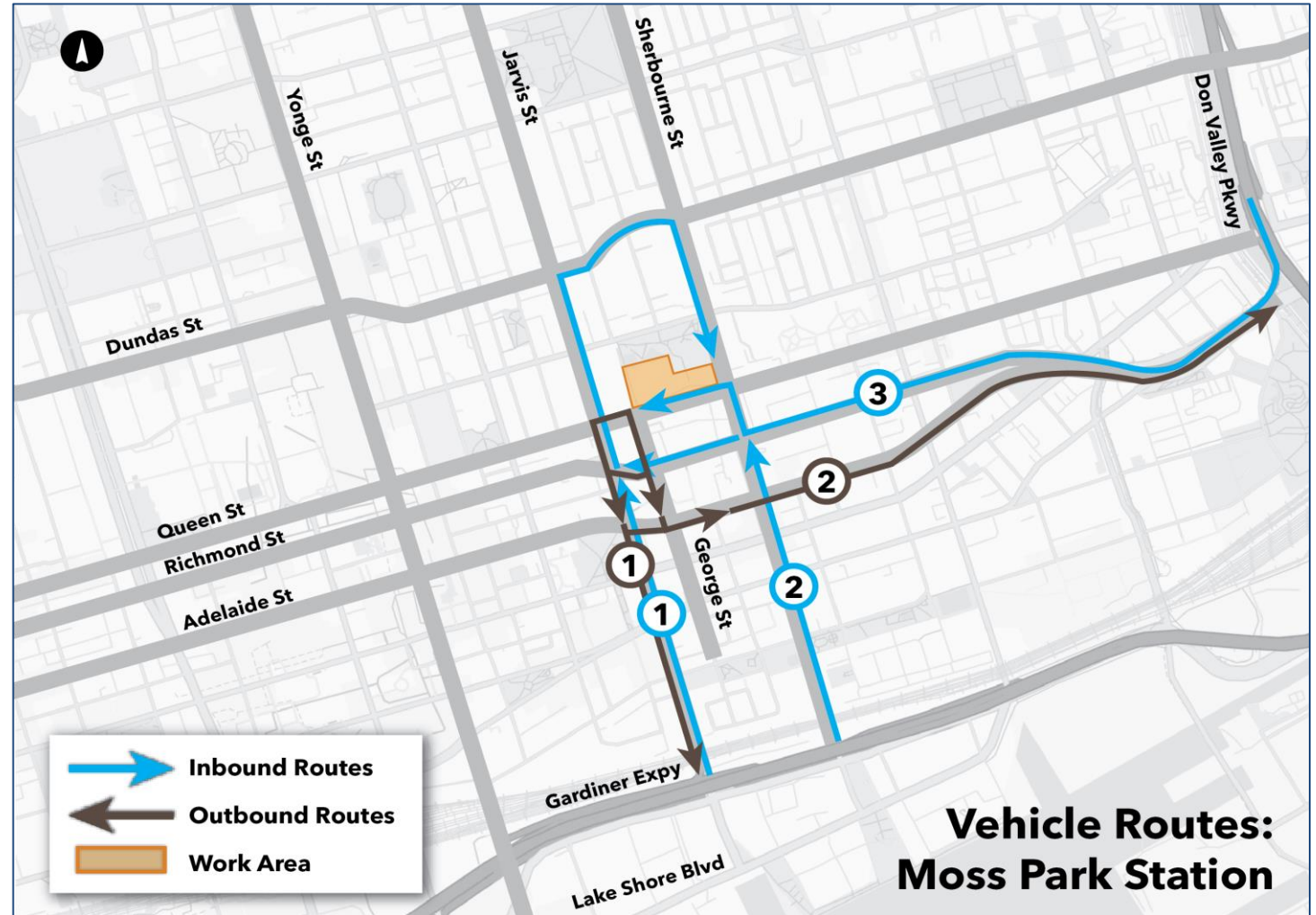
If you have any questions or concerns regarding truck routes, please call our 24-hour hotline at 416-202-5100 or email us at ontarioline@metrolinx.com

Moss Park Station Truck Routes

Please note that the truck routes and volumes outlined are subject to change.

- 1** Gardiner/Lakes Shore to Jarvis, north to Dundas, east to Sherbourne, south to Queen & west to site entrance
- 2** Gardiner/Lake Shore north to Queen, west to site entrance
- 3** DVP to Richmond, west to Jarvis, north to Dundas, east to Sherbourne, south to Queen, west to site entrance
- 1** West from site on Queen to Jarvis, south to Gardiner/Lake Shore
- 2** South from site on Jarvis or George to Adelaide, east to DVP

Peak Average Daily Truck Count: 28



For more information on the Ontario Line Truck Route Safety Plan , click [HERE](#)