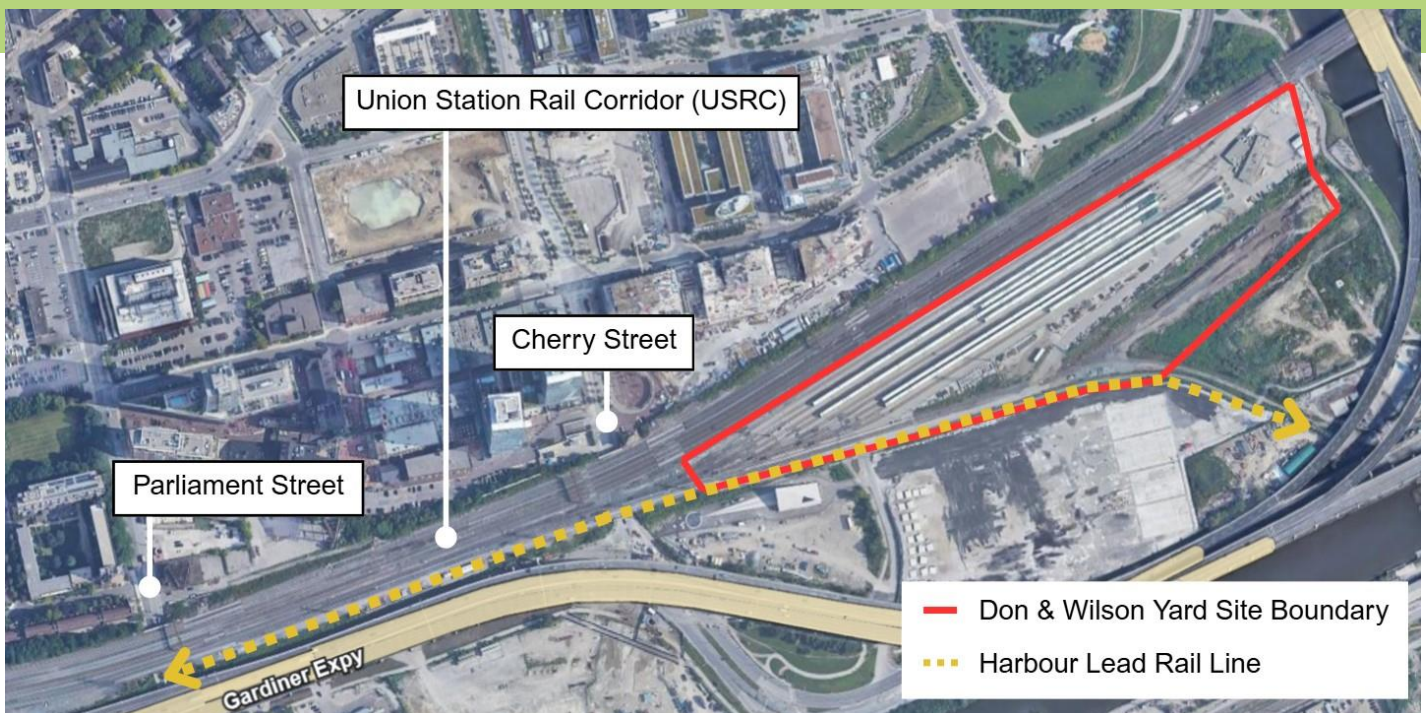


# Upcoming Construction Activities and Impacts at Don & Wilson Yard, Cherry & Parliament Street Rail Bridges

Ongoing until Autumn 2025



## What is happening?

Construction activities at Union Station and within the Union Station Rail Corridor (USRC) are being completed in phases to deliver the required infrastructure needed to bring two-way, all-day rail service every 15 minutes or better along core segments of the GO network as part of the greater GO expansion mandate.

As part of the Union Station Enhancement Project, the Don and Wilson Yards are being combined into an active rail yard and maintenance facility as part of GO Expansion enabling works. GO Expansion will offer more service with faster trains and seamless connections to a regional rapid transit network.

We have been removing and relocating infrastructure on the south side of the Union Station Rail Corridor east of Union Station to allow for two additional sections of track to be installed. These additional sections of track will provide an increased transit capacity, offer a more efficient and reliable service with faster

trains, and allow for future electrification as part of the larger GO Expansion Program. This work includes remediation of The Harbour Lead Line which connects the Union Station Rail Corridor to the Port Lands.

**Below is a list of ongoing and upcoming sequential construction activities at Wilson Yard for your early awareness:**

#### **Hydro Vacuuming Test Pits:**

Hydro vacuuming allows for non-destructive digging to locate potential buried infrastructure before more invasive excavation work. All hydro vacuuming will be conducted adjacent to the track at night, so work will minimize impact on train operations and ensure crew safety.

#### **Backfilling Test Pits:**

Upon completion of hydro-vacuuming surveyors capture utility and pit data. Following survey work, each test pit will be backfilled to grade.

#### **Slope Remediation:**

Using an excavator and a hydrovacuum, the team will adjust the existing slope to increase the safety and stability of the area.

#### **What does this mean for you?**

Continuing into Autumn 2025 there will be increased construction activity at Wilson Yard and along the Union Station Rail Corridor. Please refer to the table below for all upcoming activities and their associated impacts. As work progresses, this table will be updated with scheduling updates, and an updated notice will be circulated.

#### **Upcoming Activities**

Location	Activity	Dates	Impacts
Parliament Street Bridge	<ul style="list-style-type: none"><li>• Slope Remediation</li><li>• Hydro Vacuuming Test Pits</li><li>• Backfilling Test Pits</li></ul>	August 5 – Autumn	<ul style="list-style-type: none"><li>• Noise (daytime and overnight work).</li></ul>
Cherry Street Bridge	<ul style="list-style-type: none"><li>• Slope Remediation</li><li>• Hydro Vacuuming Test Pits</li><li>• Backfilling Test Pits</li></ul>	August 5 – Autumn	<ul style="list-style-type: none"><li>• Noise (daytime and overnight work).</li></ul>
Don Yard: Harbour Lead Line	<ul style="list-style-type: none"><li>• Hydro Vacuuming Test Pits</li><li>• Backfilling Test Pits</li><li>• Removal of temporary concrete barrier, metal fencing, asphalt, and abandoned train tracks.</li><li>• Soil Resistivity Testing</li></ul>	August 5 – Autumn	<ul style="list-style-type: none"><li>• Noise (daytime and overnight work).</li></ul>

#### **Contact Us:**

✉ Write to us at: [torontoeast@metrolinx.com](mailto:torontoeast@metrolinx.com);

☎ By telephone (416) 202-3900

🐦 Find us on Twitter [@GOExpansion](https://twitter.com/GOExpansion)

🌐 Visit the website: [www.metrolinx.com/projects-and-programs/go-expansion](http://www.metrolinx.com/projects-and-programs/go-expansion)

✉ Disponible en français sur demande. Si vous êtes intéressé, veuillez envoyer un courriel à: [torontoeast@metrolinx.com](mailto:torontoeast@metrolinx.com)

Don Yard	<ul style="list-style-type: none"> <li>Hydro Vacuuming Test Pits</li> </ul>	August 5 - Autumn	<ul style="list-style-type: none"> <li>Noise (daytime and overnight work).</li> </ul>
----------	---	-------------------	---

*This schedule will be updated as work progresses and is subject to change due to the complexities of this work and pending permit approvals.*

## Long-Term Benefits

Wilson Yard rail yard and maintenance facility will help service rail infrastructure as part of GO Expansion enabling works. Work at Wilson Yard will complement existing work along the Union Station Rail Corridor and Union Station, which include two additional sections of track to be installed along the southside of the Union Station Rail Corridor, to the east of Union Station which will increase capacity and allow for future electrification as part of the larger GO Expansion Program.

## Questions

If you have any questions or concerns about this work, please contact us any time at [TorontoEast@metrolinx.com](mailto:TorontoEast@metrolinx.com) or (416) 202-3900. For more information on GO Expansion in your community, visit our website at [Metrolinx.com/GoExpansion](https://www.metrolinx.com/GoExpansion).

Please scan the QR Code above to subscribe to our weekly e-Newsletter for updates.

We appreciate your ongoing patience and understanding of this necessary work. Dates subject to change.



SCAN ME

### Contact Us:

✉ Write to us at: [torontoeast@metrolinx.com](mailto:torontoeast@metrolinx.com);

☎ By telephone (416) 202-3900

🐦 Find us on Twitter [@GOExpansion](https://twitter.com/GOExpansion)

🌐 Visit the website: [www.metrolinx.com/projects-and-programs/go-expansion](https://www.metrolinx.com/projects-and-programs/go-expansion)

✉ Disponible en français sur demande. Si vous êtes intéressé, veuillez envoyer un courriel à: [torontoeast@metrolinx.com](mailto:torontoeast@metrolinx.com)