

Ontario Line

Queen Station Construction Liaison Committee

July 8, 2025



Agenda

Welcome (5 min)

- Introductions
- Land Acknowledgment
- Session Guidelines
- Safety Moment

Presentation (25 min)

- Construction Updates

Q/A and discussion (30 min)



LAND ACKNOWLEDGEMENT

Metrolinx acknowledges that we connect communities by building and operating transit within the traditional lands of the Anishinaabe, the Haudenosaunee and the Huron-Wendat peoples, for whom these lands continue to have great importance.

Treaties between First Nations and governments cover these lands, and the promises contained in these Treaties remain relevant to this day.

Metrolinx and its employees are committed to understanding the history of these lands and the continued impacts of colonization and take responsibility for actions to advance reconciliation.

Metrolinx will continue to seek the knowledge, expertise and experience of Indigenous partners and commits to doing business in a manner that is built on a foundation of trust, respect, and collaboration.

Session Guidelines

We greatly appreciate the community members who are here to take part in this public session.

To ensure that everyone can contribute to a positive and safe community experience, all participants shall adhere to the following *Code of Conduct*:

- Treat the presenters and participants with respect and understanding
- Acknowledge and appreciate the diversity of individuals and their situations
- Refrain from supporting or engaging in any form of discriminatory behaviour

Metrolinx is committed to fostering a safe and respectful environment.

We encourage respectful and constructive communication.

SAFETY MOMENT - STAYING SAFE IN THE HEAT

Urban environments like the Ontario Line work zones and the surrounding neighbourhoods can be very hot in the summer. Let's take extra precaution to stay safe this season:

Hydrate Regularly

- Drink at least 1 cup of water every 30 minutes

What to Avoid

- Avoid caffeine and hot, heavy meals that raise your body temperature

Stay Alert

- Be aware of heat stress symptoms in yourself and others

Know Your Risk Factors

- Your ability to handle heat can depend on:
 - Age & weight
 - Fitness level
 - Medical conditions (e.g., heart disease, high blood pressure)
 - Medications or recent illness

The infographic features a central silhouette of a person in a hard hat, colored with a gradient from yellow to red. To the left, under the 'Heat exhaustion' header, are symptoms: Elevated body temperature, Dizziness, Headache, Heavy sweating, Decreased urination, Nausea, Thirst, Irritability, and Fatigue. Below these is a 'Take action' section with instructions: Move worker to a cool place, Remove and loosen clothes, Cool with wet cloths or take a cool bath if available, and Offer small sips of water. At the bottom left, a 'When to call for help' section lists 'Symptoms worsen' and 'Symptoms persist', accompanied by a circular icon of a hand holding a phone with '911' on the screen. To the right, under the 'Heat stroke' header, are symptoms: High temperature (103° F or more), Confusion, Slurred speech, Skin is hot, red, and dry, Seizures, and Fainting. Below these is a 'Take action' section with a red header. It includes the instruction 'Call 911: this is a medical emergency' next to an ambulance icon, followed by 'After you call' instructions: Move worker to a cool place and don't leave alone until help gets there, Lower temperature by removing clothes, Give a cool bath, if available, and Small sips of water, if possible.

Heat exhaustion	Heat stroke
What it looks like	What it looks like
Elevated body temperature	High temperature (103° F or more)
Dizziness	Confusion
Headache	Slurred speech
Heavy sweating	Skin is hot, red, and dry
Decreased urination	Seizures
Nausea	Fainting
Thirst	
Irritability	
Fatigue	
Take action	Take action
Move worker to a cool place	Call 911: this is a medical emergency
Remove and loosen clothes	
Cool with wet cloths or take a cool bath if available	
Offer small sips of water	
When to call for help	After you call
Symptoms worsen	Move worker to a cool place and don't leave alone until help gets there
Symptoms persist	Lower temperature by removing clothes
	Give a cool bath, if available
	Small sips of water, if possible

Queen Station Construction Update



CURRENT WORKS: EAST SITE

- Excavation work is ongoing and installation of the cladding on the acoustic shelter has started. The acoustic shelter is expected to be completed by the end of August 2025.
 - The shelter structure is expected to reduce noise and minimize dirt and dust from the work site, while allowing crews to work extended hours, year-round without being affected by the weather.
- Work is underway on 24-hours shifts, six days a week, from Monday through Saturday. For more information: [Public Notice](#)
- Watermain work is expected to start as early July 21, 2025. The following addresses are expected to be impacted by this water shutdown:
 - 1 Queen Street East
 - 2 Queen Street East



Cladding installation is underway for the future acoustic shelter at the Queen station east site.

AERIAL VIEW OF THE EAST SITE



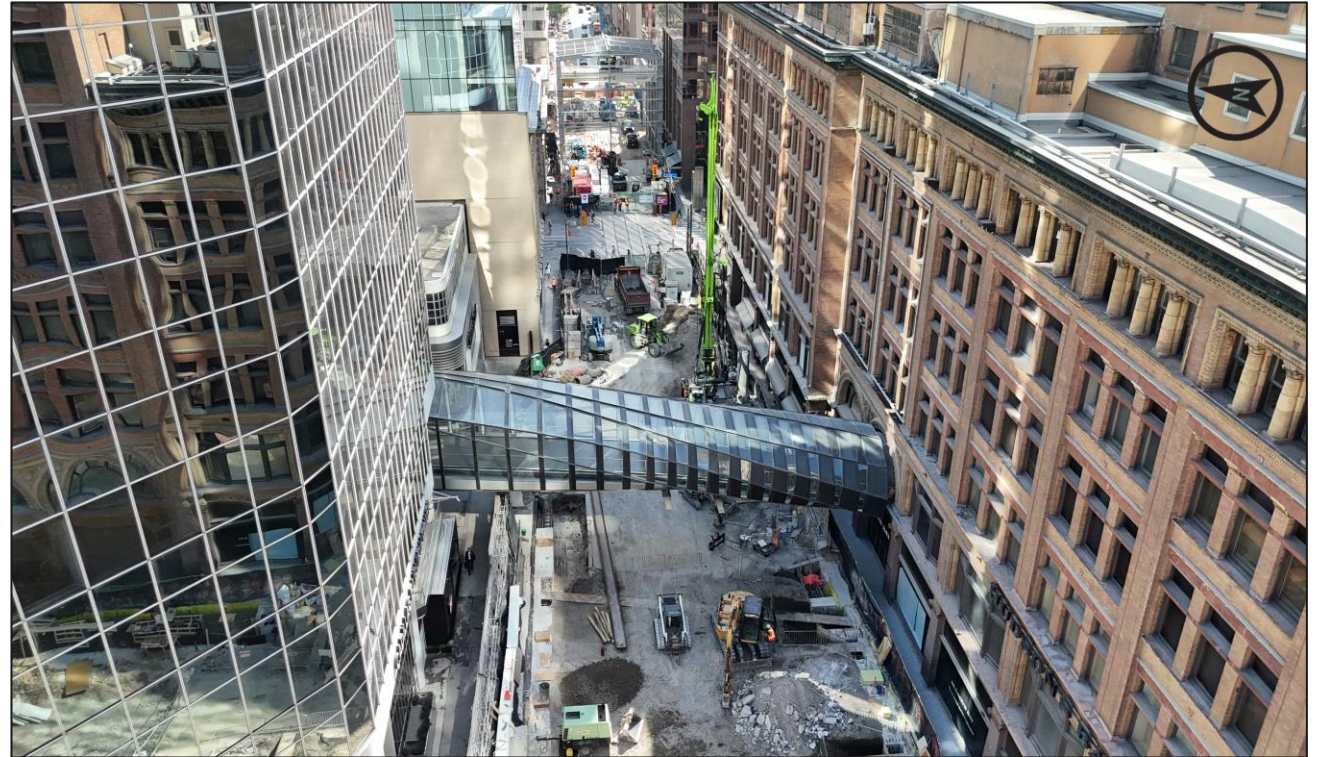
LEADS
SHOULD STARTS

CURRENT WORKS: WEST SITE

- Piling is complete. Early excavation works, including preparation works, are ongoing.
 - Crews will be digging, breaking, and removing soil to create the footprint of the future station site.
 - Elevated structure installation is ongoing to host a gantry crane.

This phase of excavation work is expected to take place through early 2026.

- Work is underway on 24-hours shifts, six days a week, from Monday through Saturday. For more: information: [Public Notice](#)
- Instrumentation and monitoring works are expected to continue throughout the summer as crews prepare for future excavation works.



Aerial view of the west site

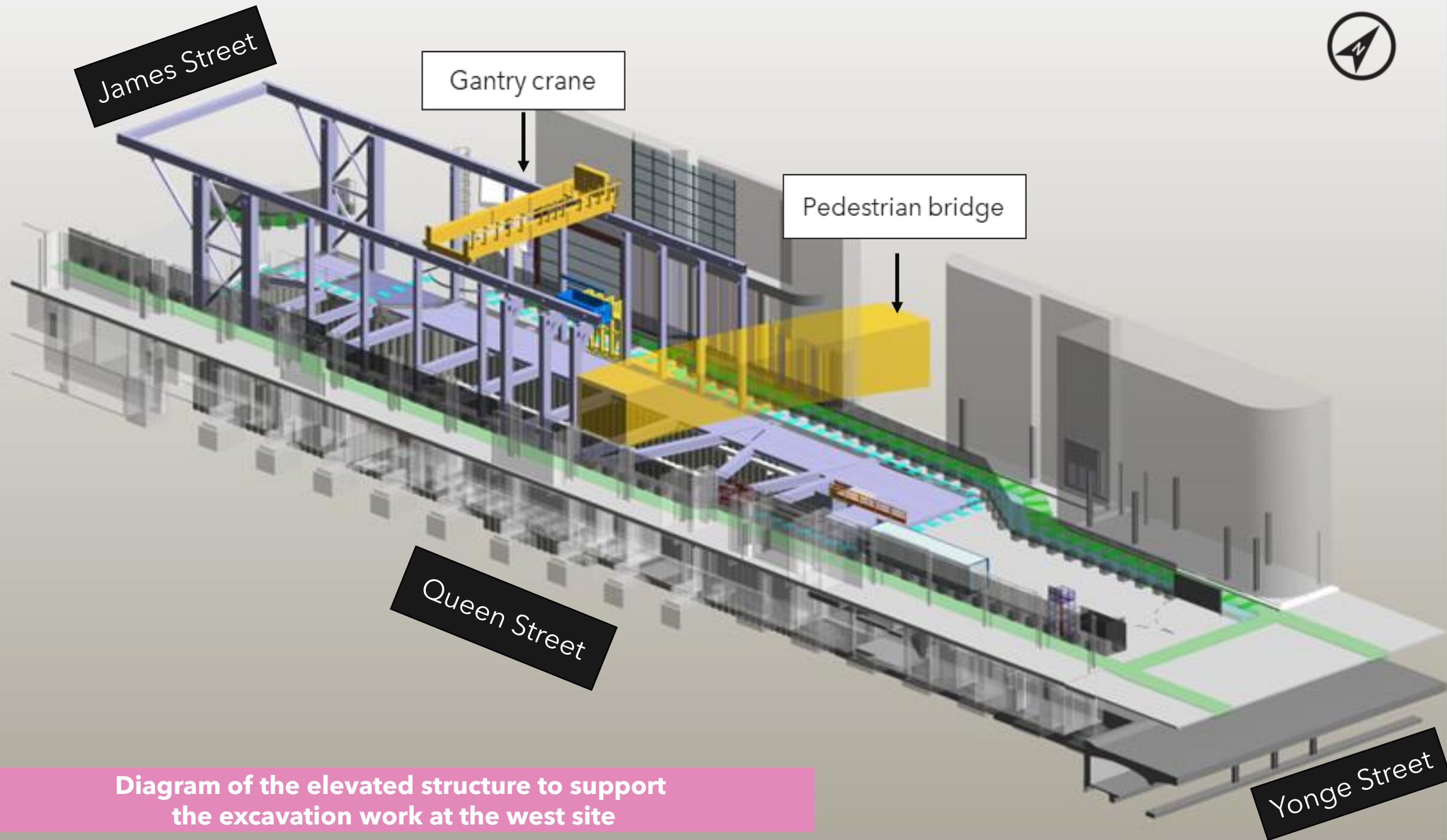


Diagram of the elevated structure to support the excavation work at the west site

UPCOMING WORKS: WEST SITE

- Crews will soon start construction of an elevated structure for the future crane. This crane will support the excavation works at the west site.
- The work will include delivery of oversized materials and equipment throughout the month, and some intermittent sidewalk closure on Queen Street West.
- Installation of the crane is expected this summer 2025, following completion of the structure. The crane will be tested for final commissioning prior to becoming fully operational.



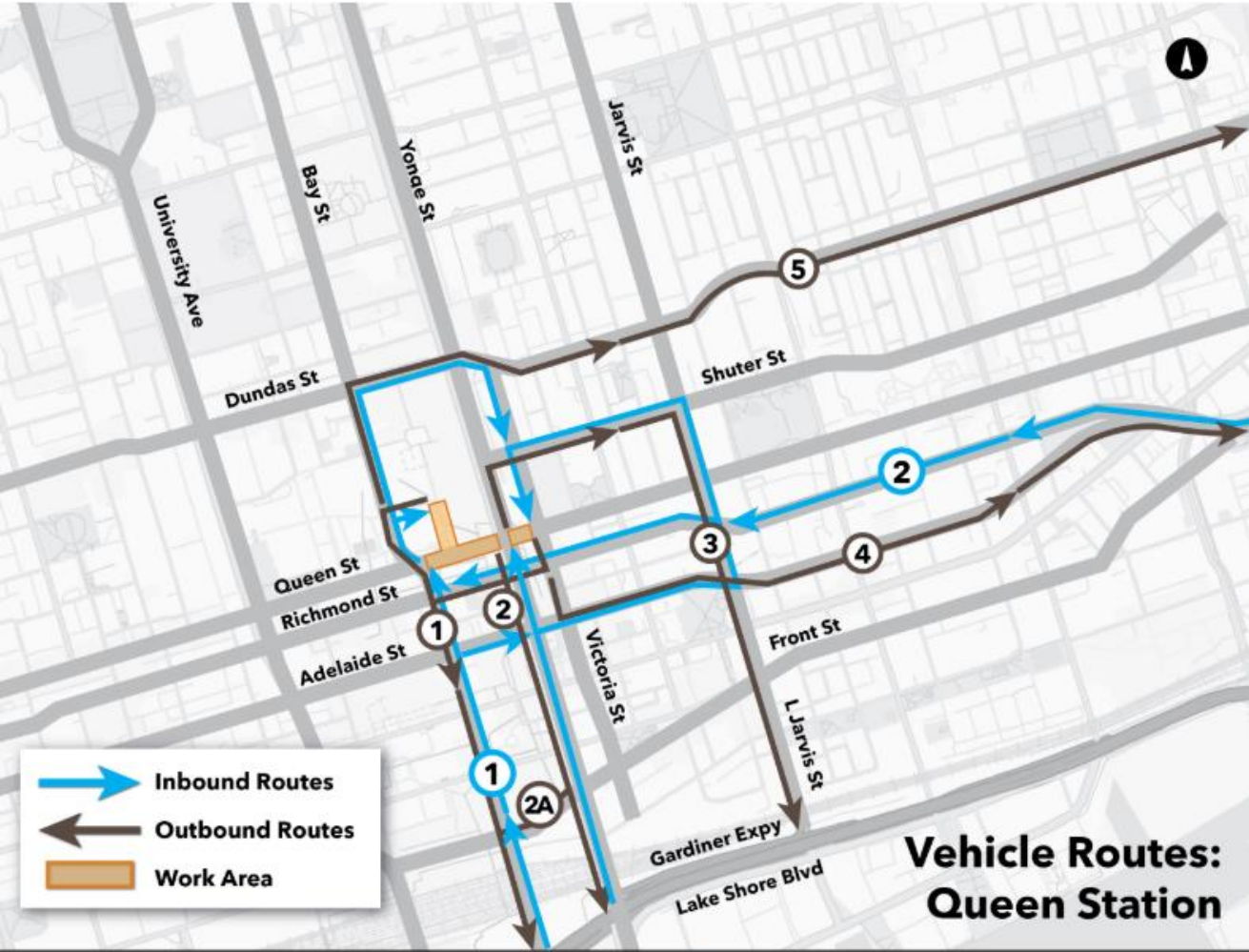
Part of the gantry crane to be delivered to the west site



AERIAL VIEW OF THE WEST SITE

Queen Station Truck Routes

Please note that the truck routes and volumes outlined are subject to change.



- 1** Gardiner/Lake Shore to Bay St, north to Adelaide; approach site using options of:

 - Bay (west and northwest gates)
 - Adelaide, Jarvis, Shuter, & Victoria (east gate)
 - Bay, Dundas, & Victoria or Shuter & Yonge (north gate)
- 2** DVP to Richmond, west to Jarvis and options in 1
- 3** Gardiner/Lake Shore to, Yonge, north to options in 1
- 1** South via Bay to Lake Shore/Gardiner
- 2** South via Yonge to Lake Shore/Gardiner
- 2A** Divert west to Yonge via Front St
- 3** South via Shuter/Jarvis to Lake Shore/Gardiner
- 4** East via Adelaide to DVP
- 5** East via Bay/Dundas to DVP

Peak Average Daily Truck Count: 70

Upcoming Work

EIGHT WEEK LOOK-AHEAD EAST SITE July 8 – August 26, 2025

#	Activity	Expected Start	Expected Duration	Impact	Hours of Work	Mitigations
1	Excavation prep, installation of acoustic shelter + gantry crane	Started June 2/ongoing	2 months	Vibration, noise, air quality, sidewalk closures, temporary lane closures	24 hours Monday to Saturday	Noise wall, hoarding. Dust mitigation includes misting, sweeping. Erosion and sediment control.
2	Excavation (soft soil)	Started end of June/ongoing	4 months	Vibration, noise, air quality	24 hours Monday to Saturday	Noise wall, hoarding. Dust mitigation includes misting, sweeping. Erosion and sediment control.

*Note: All dates and times are subject to change as construction planning progresses

EIGHT WEEK LOOK-AHEAD WEST SITE: July 8 – August 26, 2025

#	Activity	Expected Start	Expected Duration	Impact	Hours of Work	Mitigations
1	Elevated structure + Overhead crane installation	Started July 3/ Ongoing	4 weeks	Vibration, noise, air quality, sidewalk closures	24 hours Monday to Saturday	Noise wall, hoarding. Dust mitigation includes misting, sweeping. Erosion and sediment control.
2	Excavation (soft soil)	Late July	3 months	Vibration, noise, air quality	24 hours Monday to Saturday	Noise wall, hoarding. Dust mitigation includes misting, sweeping. Erosion and sediment control

*Note: All dates and times are subject to change as construction planning progresses

2025 CONSTRUCTION LOOK-AHEAD: QUEEN STATION

Timing	Activity	Location	Details and Purpose
Summer	Acoustic shelter (east) Capping Beam +Utilities + Elevated structure	East site - within the site and along designated haul routes. West site - within the site and along designated haul routes	Deep foundation work supports heavy structures by transferring loads to stable ground below the surface. Hydrovac trucks will be utilized to complete this work.
Summer/Fall	Acoustic shelter (east) East and west shaft excavation (soil and rock)	East site - within the site and along designated haul routes. West site - within the site and along designated haul routes.	Removing large volumes of material from the station shaft to build a new subway cavern and tunnel underground. Dump trucks and various excavators will be used to complete this work.
Winter 2025/2026	East and west shaft excavation (rock) Cavern excavation	Within the sites and along designated haul routes.	Removing large volumes of material to build a new subway cavern and tunnel underground. Dump trucks and various excavators will be used to complete this work.

*Note: All dates and times are subject to change as construction planning progresses

Community Engagement

Ontario Line

Calling all businesses: We want to hear from you!



Take this quick and easy survey
to help us best support your
business during construction.



Discussion

KEEPING YOU INFORMED

Metrolinx will keep the community, residents and businesses informed by providing project updates, seeking input and feedback, while addressing questions and concerns effectively and quickly.

Connect with us:

- Julia Orsini, Community Engagement Advisor
- Ross Andersen, Senior Advisor, Community Engagement

Email: OntarioLine@metrolinx.com

Telephone 24/7 @ 416-202-5100

Next CLC: August 12, 2025

Follow us on social media:

Twitter / Facebook / Instagram: @OntarioLine



*Scan here to sign up
for the Ontario Line
e-newsletter*



*Scan here to explore
Ontario Line CLC
documents*

