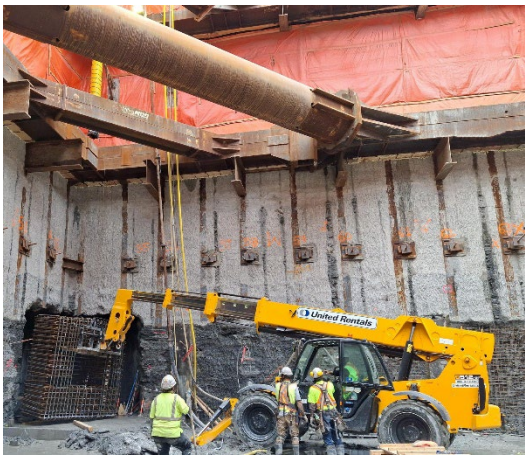


# Queen-Spadina South Site Construction Update - June 6, 2025



Structural work in progress at Queen-Spadina south site

## What is happening?

- Crews have nearly completed the current phase of structural works at the site.
- The next level of excavation works, including rock breaking, is expected to resume the week of June 9, 2025 and will take approximately four to six weeks to complete.
- Hours of work at the Queen-Spadina south site are 7:00 a.m. to 11:00 p.m., Monday through Friday with occasional weekends. Work hours may be adjusted in consideration of the particular works underway and construction sequence.
- During this next phase of work, crews are expected to work from 7:00 a.m. to 11:00 p.m. during weekdays (Monday through Friday).
- Crews may work during the weekend, Saturdays and Sundays, from 7:00 a.m. to 7:00 p.m.
- The excavation cycle (rock breaking and structural works) is expected to continue through December 2025.

## What to expect

We are conscious of the impact of our work on our neighbours and continue to explore measures to lessen that impact. The following measures are in place and positively impacting the works:

- Excavation machinery using the primary (large) hammer attachment have been equipped with noise blankets to help dampen the noise impact. Blankets are placed around the attachments (see photo at right). This equipment must be used for rock breaking.
  - Where possible, crew has changed attachments on excavation equipment or adjusted the size of the excavator in use to a smaller machine. These adjustments (for example, use of a ripper attachment, smaller machine, or low-noise hammer) are expected to emit less jarring noise than its counterparts, however, can only be used in certain areas of the excavation due to space and structural restraints. Where these restraints exist (for example near walls or underneath structural steel supports), the original (hammer) attachment and excavator machine must continue to be used, with a noise blanket attached.
  - Use of broadband back up alarms on machinery. Crews are actively ensuring the use of broadband backup alarms on machinery and trucks at site, wherever it is safe to do so. Trucks visiting the site regularly for hauling without this feature will be asked to leave, and we’ve also reviewed when trucks are coming to site to reschedule or delay those that can wait until later times in the morning (such as fuel trucks). It’s important to note that some trucks – such as those that enter the site only for occasional or one-off delivery – may not have this feature installed, but they will be used only in a limited capacity.
  - Our team is monitoring the impact of these changes and making adjustments as we go, as required.
- 
- Noise blankets in use on large hammer attachment
- Learn more about the measures we take to keep communities safe as we build more transit connections: [metrolinx.com/KeepingCommunitiesSafe](https://metrolinx.com/KeepingCommunitiesSafe)

- For more information about upcoming station work, please visit **metrolinx.com/ontarioline** or sign up for our e-newsletter.

## About the Ontario Line

- 15.6-kilometre subway line that will make it faster and easier to travel within Toronto and beyond.
- 15 stops and more than 40 connections to other transit, including GO train, subway, LRT, streetcar, and bus lines.
- Less than 30 minutes from one end of the line to the other.
- 28,000 fewer car trips off the road each day.

**Contact us:**  
Call us 24/7 at: [416-202-5100](tel:416-202-5100)  
Write to us at: [ontarioline@metrolinx.com](mailto:ontarioline@metrolinx.com)  
Find us on X, Facebook, and Instagram: [@ontarioline](#)  
Visit the website: [www.metrolinx.com/ontarioline](http://www.metrolinx.com/ontarioline)

**Visit our community offices:**  
**770 Queen Street East (near Queen & Broadview)**  
General hours:  
Mondays, Tuesdays, and Fridays: 9:00 a.m. to 5:00 p.m.  
Wednesdays and Thursdays: 10:00 a.m. to 6:00 p.m.

**Thorncliffe Park:**  
East York Town Centre  
45 Overlea Blvd., Toronto, ON M4H 1C3  
Unit 153 (across from the Rogers store)  
General hours:  
Monday – Friday, 9 a.m. – 5 p.m.

Disponible en français sur demande. Si vous êtes intéressé, veuillez envoyer un courriel à [OntarioLine@metrolinx.com](mailto:OntarioLine@metrolinx.com)

**Contact us:**  
Call us 24/7 at: [416-202-5100](tel:416-202-5100)  
Write to us at: [ontarioline@metrolinx.com](mailto:ontarioline@metrolinx.com)  
Find us on X, Facebook, and Instagram: [@ontarioline](#)  
Visit the website: [www.metrolinx.com/ontarioline](http://www.metrolinx.com/ontarioline)

**Visit our community offices:**  
**770 Queen Street East (near Queen & Broadview)**  
General hours:  
Mondays, Tuesdays, and Fridays: 9:00 a.m. to 5:00 p.m.  
Wednesdays and Thursdays: 10:00 a.m. to 6:00 p.m.

**Thorncliffe Park:**  
East York Town Centre  
45 Overlea Blvd., Toronto, ON M4H 1C3  
Unit 153 (across from the Rogers store)  
General hours:  
Monday – Friday, 9 a.m. – 5 p.m.

Disponible en français sur demande. Si vous êtes intéressé, veuillez envoyer un courriel à [ontarioline@metrolinx.com](mailto:ontarioline@metrolinx.com)