

Construction Liaison Committee Site Walk

Pape-Cosburn & Minton Place

July 16, 2025

Minton Portal - May to July Progress

- Secant pile installation and localized concrete pours have occurred and continue. Nearly 1/2 of secant piles have been completed so far (93 out of 200). Zone 1 secant pile installation has been completed. Zone 2, Zone 3 and Zone 4 secant piles will commence mid-August and will continue along with phase 2 portal excavation works.
- Slope soil nail and soil anchor installation is ongoing. Soil nails are completed and over 70% of anchors are installed (92 out of 127). Concrete caps are being poured on the west side and post tensioning is being completed on anchors.



Phase 2 Excavation

Phase 2 of portal excavation work will begin in early August 2025 and run until July 2026. It will involve excavating 13 metres down from existing grade.

- Excavation will occur in stages by digging 2-3 metres at a time and installing tie-back anchors (in-ground anchors that hold supporting walls in-place) to secure shoring before proceeding further down.
- Each stage will generate around 3,000 cubic metres of excavated material.
- Approximately 50 haul trucks driving in and out of site each day. Construction equipment, such as an excavator, tie-back driller, support crane, and dump trucks will be on site throughout the duration of these works.

During this phase, community members can expect noise, dust, and vibration from construction equipment.

Vibration and noise levels will be measured on an ongoing basis and mitigations implemented if an exceedance occurs. Potential mitigations for any noise or vibration exceedances include noise barrier installation, slowing the speed of work, and/or changing the equipment used on site.

Dust mitigation measures include using a water truck on site to moisten soil to prevent its spread. The contractor will also continue sweeping streets in the area to limit the spread of dust and maintain cleanliness.



Don Valley Crossing –May to July Progress



- Piling operations have commenced at Pier A4, starting with the test pile and advancing to production piles.
- Slope stabilization at Pier A3 is ongoing, with soil nail drilling, rebar installation, and shotcrete application in progress across Zones 3, 4, and 5.
- Excavation for pile cap and mud slab pouring has been completed. Chipping of the caisson concrete overpour is also finalized.
- Temporary bridge installation is scheduled to begin by mid-July to facilitate access to the Pier A1 area.
- Traffic control measures are in place, including the installation of traffic lights on Redway Road and a lane closure on Millwood Road, to manage traffic flow around the Don Valley Crossing work zones.

Eight Week Look Ahead

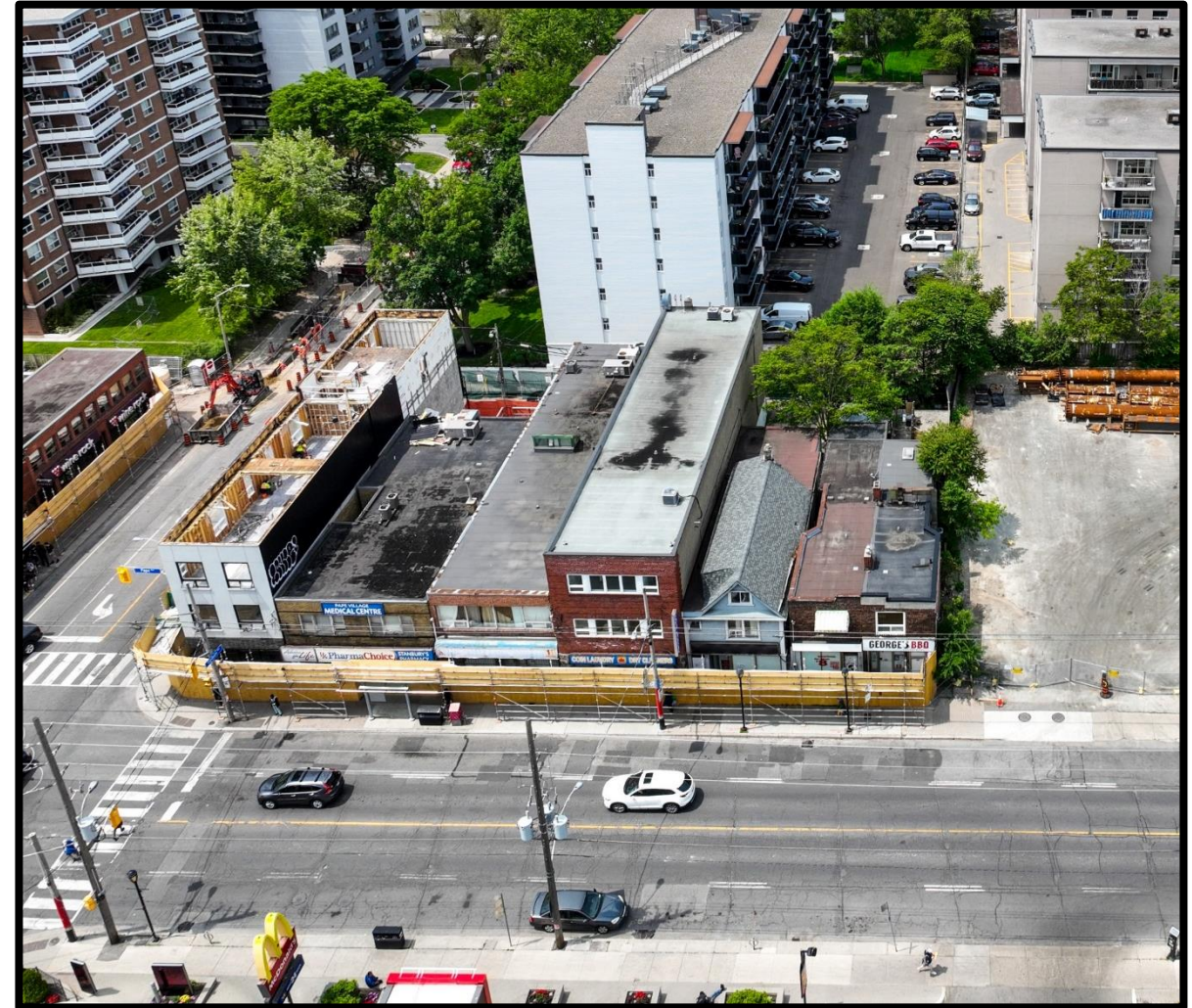
#	Activity	Location	Expected Start	Expected Duration	Impact	Work Hours	Mitigations
1	Zone 2 Secant Pile Installation	Minton Portal	December 18	1 year	Vehicular traffic, vibration, noise	7:00 am 5:30 pm**	Monitoring of traffic control plans, traffic control personnel, vibration monitoring, noise monitoring
2	Slope soil nails and soil anchors	Minton Portal	December 15	8 months	Vehicular traffic, vibration, noise	7:00 am 5:30 pm**	
3	Excavation	Minton Portal	Early August	10 months	Vehicular traffic, vibration, noise	7:00 am 5:30 pm**	
4	Slope Stabilization	Don Valley Crossing (Pier A3)	January 2025	7-8 Months (to August 2025)	Noise, Vibration, Air Quality	7:00 am 5:30 pm	
5	Pier Piling	Don Valley Crossing (Pier A4)	July 2025	Two months	Noise, Vibration, Air Quality	7:00 am 8:00 pm	
6	Temporary bridge installation	Don Valley Crossing (Pier A1)	July 2025	Two months	Noise, Vibration, Air Quality	7:00 am 5:30 pm	
7	Access road construction	Don Valley Crossing (Pier A1)	August 2025	Two months	Noise, Vibration, Air Quality	7:00 am 5:30 pm	
8	Pier twinning	Don Valley Crossing (Pier A2)	August 2025	Four months	Noise, Vibration, Air Quality	7:00 am 5:30 pm	
9	HONI Line Crossing	Don Valley Crossing (Pier A5)	July 2025	One month	Noise, Vibration, Air Quality	7:00 am 7:00 am (24h)	

***Given the unpredictable nature of subsurface conditions, extended hours may be required on weekdays. Crews will do their best to complete construction activities by 5:30pm, but extended hours until 7:00pm may be required at times. Saturday works will occur from 9:00am to 7:00pm.*

Cosburn Station Works

Demolitions

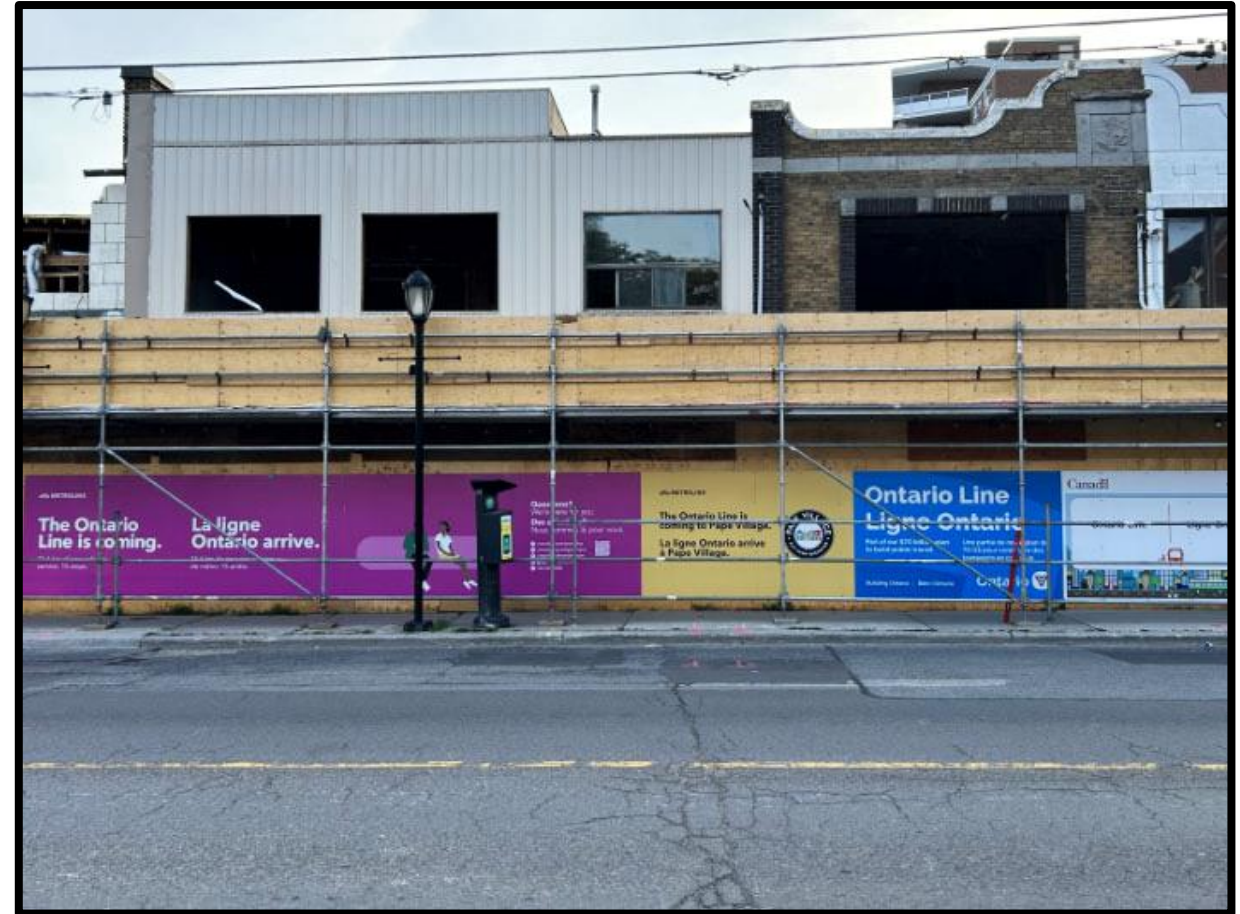
- Demolition work commenced in May and is expected to continue for approximately 4 to 5 months.
- Overhead sidewalk protection has been installed along the north and south blocks. There are no pedestrian impacts.
- In advance of demolition, specialized teams inspected buildings to identify features for preservation, including a stone carving of an animal and a decorative ship carving
- Key heritage elements have been placed in storage and may be later integrated into station designs or in revitalized streetscapes – blending historic features with modern rapid transit



Cosburn demolition in progress

What's next?

- Once demolition is complete, support of excavation work will begin
- Relocation, updates to, and connections of underground utilities (water, storm and sanitary sewer)
- Installation of underground concrete support walls (slurry walls), soil improvement, dry and wet utilities in bracing elements and drilled piles to create support for the excavation.
- Excavation of the station footprint to receive the tunnel boring machines
- Structural construction of Cosburn Station



Overhead protection with Metrolinx signage on Pape Avenue

Cosburn Station – Upcoming Works

#	Activity	Location	Expected Start	Expected Duration	Impact	Hours of Work	Mitigations
1	Geotechnical and subsurface investigations	Select sites along Pape Ave	Nov 2024	10 months	Noise, vibration, lighting during the evening, temporary street parking closures	7:00 am - 7:00 pm	Dust mitigation includes misting, sweeping and hydrovac trucks. Erosion and sediment control.
2	Abatement	Cosburn site	April 2025	5 months	Work to take place within buildings		N/A
3	Tree/ vegetation removal	Cosburn site	Late July	3 to 5 days	Noise	8:00 am - 3:00 pm	Trees with identified nests are not removed until the end of nesting season (Late August)
4	Demolition	Cosburn site	South block mid-May and north block late May	4 to 5 months	Vibration, noise, air quality, traffic, lane and sidewalk closures	7:00 am - 7:00 pm	Noise, vibration and air quality monitoring. Temporary fencing with mesh dust screens. Dust mitigation includes street spraying and sweeping, work stoppage during high winds

Truck Safety Plan

TRUCK SAFETY PLAN OBJECTIVES

To ensure the safe and efficient movement of construction traffic, Metrolinx developed the Truck Safety Plan (TSP) to provide clear targets that guide every decision and action. The following objectives form the foundation of the plan.

- 1. Prioritize public safety**
- 2. Minimize community impacts**
- 3. Ensure regulatory compliance**
- 4. Support operational efficiency**
- 5. Promote transparency and accountability**

TRUCK ROUTE SAFETY PLAN OVERVIEW

Key considerations used in selecting truck routes include regulatory compliance, road suitability and traffic operations, community impacts and route flexibility.

When it is not feasible to completely align with key considerations, mitigations reduce community disturbances. These mitigations include traffic control measures, driver awareness and education, noise and emissions reduction, time of day restrictions, staging and holding areas and targeted enforcement.

Monitoring Compliance

Metrolinx is committed to developing and implementing truck routes that prioritize public safety, respect local communities and support efficient construction operations. This is done through efforts such as driver education, inspections and public input.

Enforcement and Incident Response

Enforcement and incident response protocols are embedded within the TSP. These protocols reinforce a culture of accountability and safety.

For more information

Please visit metrolinx.com/OntarioLineTSP to read the full Truck Safety Plan.

If you have any questions or concerns regarding truck routes, please call our 24-hour hotline at 416-202-5100 or email us at ontarioline@metrolinx.com.

TRUCK ROUTE MAP EXAMPLE

Minton Place Portal routes – shown right.

For more details on the plan and all truck routes, follow the QR code below or visit:

[Metrolinx.com/OntarioLineTSP](https://metrolinx.com/OntarioLineTSP)

