

Geotechnical investigations in railway corridor north of 16th Avenue

Expected timeline: August 5 to August 15

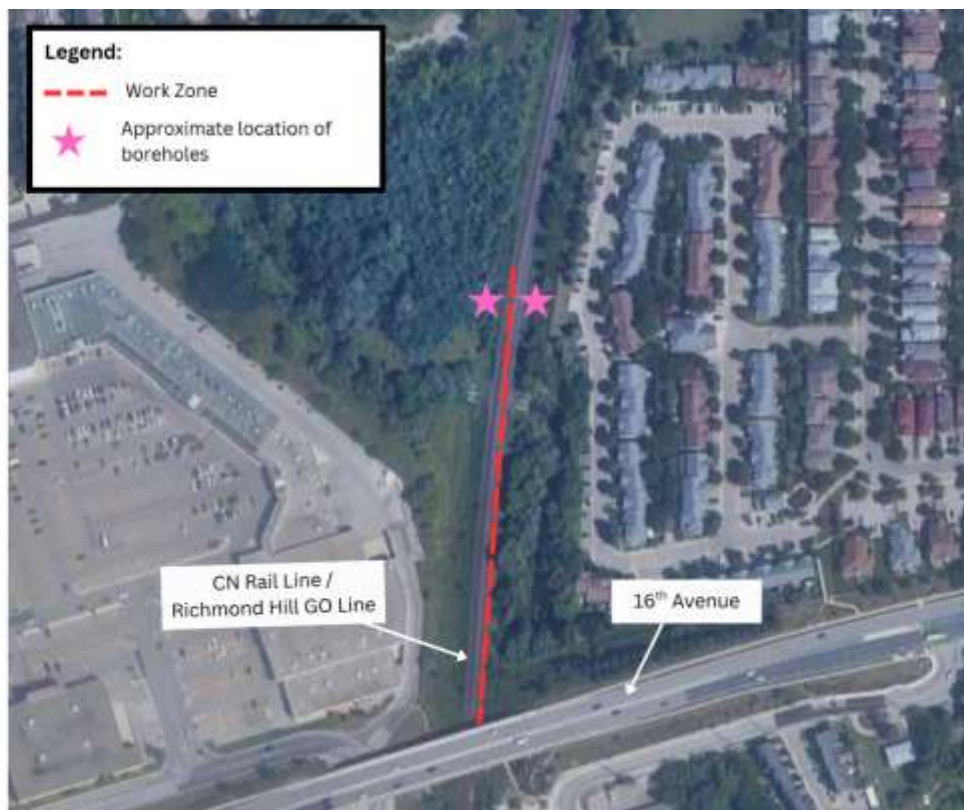
Work hours: Weekdays, 8:00 a.m. to 5:00 p.m.

What is happening?

To support future construction of the Yonge North Subway Extension, crews working on behalf of Metrolinx will conduct geotechnical investigations within the railway corridor, just north of 16th Avenue.

About the Yonge North Subway Extension

The Yonge North Subway Extension will transform the commute in York Region, Toronto and beyond by extending TTC Line 1 subway service north from Finch Station to Vaughan, Markham and Richmond Hill. The project includes five new stations along an extension of roughly eight kilometres.



This image shows the approximate location of work zones and is for illustrative purposes only.

WORK DETAILS:

- Geotechnical investigations involve collecting samples of earth by drilling holes - typically called 'boreholes' into the ground.
- The samples will provide data on soil, rock, and other underground conditions that will inform designs and construction plans for the project.
- Crews will drill two boreholes within the railway corridor 15 metres below the surface.
- Before drilling begins, crews will mark out the area and locate underground utilities.

WHAT TO EXPECT:

- You might notice drilling rigs, pick-up trucks, and crews using hand tools along the railway corridor as work is underway.
- There may also be service vehicles set up southeast of the 16th Avenue bridge at Red Maple Road.
- Work areas will be clearly marked and fenced off as required to keep everyone safe.
- If you live nearby, you might notice you may notice higher-than-usual noise levels work is underway.
- Noise and vibration levels will be monitored, and we will take steps to reduce them if needed.
- Please note that work may be rescheduled due to weather conditions or unforeseen circumstances

PEDESTRIAN DETAILS:

- There will be no impacts to sidewalks or walkways.

TRAFFIC DETAILS:

- There will be no impacts to traffic.

HAVE A QUESTION OR CONCERN? WE'RE HERE FOR YOU.

- Metrolinx has a dedicated team ready to answer any questions you may have about the Yonge North Subway Extension and the work happening in your community.
- For the most up-to-date project information, and to share your feedback, please reach out to us using the details below.
- Thank you for your patience as we complete this important work.

Contact Us:

Call us at: **416-202-7000**

✉ Write to us at: **YongeSubwayExt@metrolinx.com**

📱 Find us on social media **@YongeSubwayExt**

🌐 Visit the website: **www.metrolinx.com/YongeSubwayExt**

Disponible en français sur demande. Si vous êtes intéressé, veuillez envoyer un courriel à YongeSubwayExt@metrolinx.com.