

UPDATE: Storm Sewer Microtunnelling at Pape-Riverdale

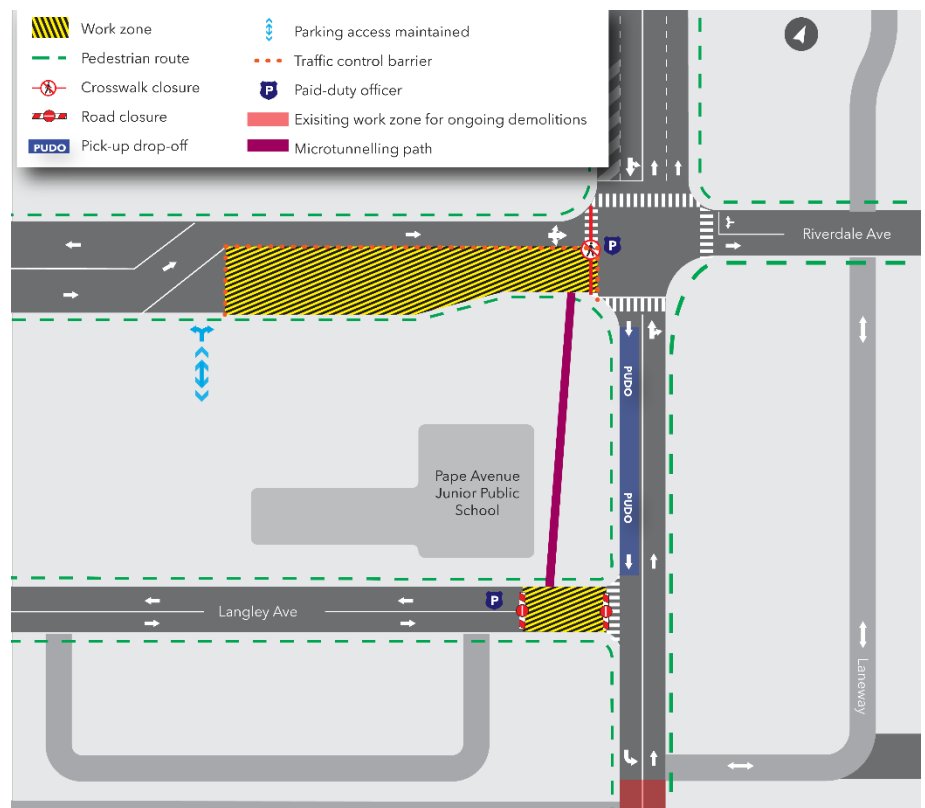
Expected Start Date: As early as Friday, July 18

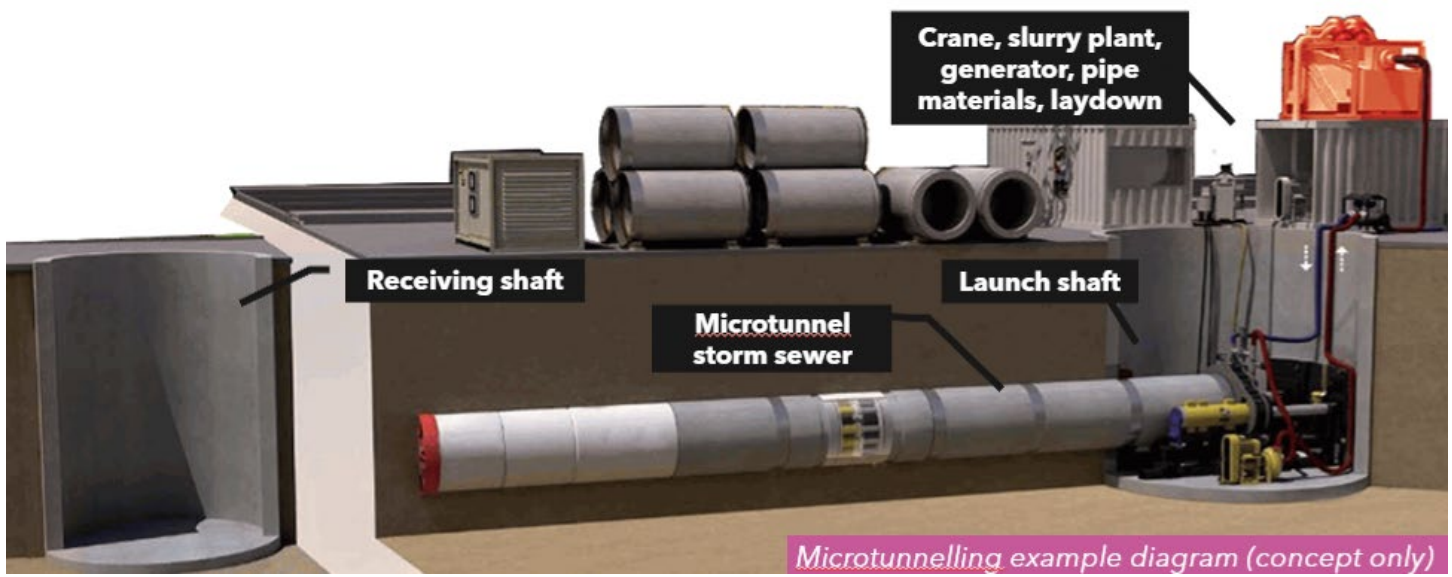
Expected Duration: Six (6) weeks

Hours of work: Weekdays, 7 a.m. to 7 p.m.
Saturdays 9 a.m. to 7 p.m.

What is Happening?

- As part of utility relocations needed to clear the way for future Ontario Line subway tunnelling operations, crews will be constructing a new storm sewer at Pape Avenue between Riverdale Avenue and Langley Avenue.
- This sewer is being constructed under the eastern edge of the Pape Avenue Junior Public School property, as shown in the graphic.
- To construct this sewer with minimal ground disturbance, crews will use a **microtunnel boring machine** to dig and install the storm sewer moving south from a shaft on Riverdale to a shaft on Langley, without requiring a trench to be excavated along the sewer's path.
- The launch shaft on the north end of the sewer (Riverdale) was completed earlier this spring, while the receiving shaft on the south end (Langley) is currently nearing completion.
- Microtunnel boring is expected to start as early as July 2 and take approximately six (6) weeks.





What to expect

- Prior to microtunnelling, crews will spend approximately one week receiving and mobilizing the microtunnel equipment on site. This will include a generator, a slurry plant, and a small crane.
 - A slurry plant is a piece of machinery that creates slurry, a liquid clay-like mixture, that is used to maintain pressure ahead of the microtunnel boring machine as it digs forward.
- Residents and businesses in the area may hear noise caused by work equipment and the generator. Noise barriers have been installed around both shafts where feasible, and crews will take measures to minimize noise impacts wherever possible.
- Noise, vibration, and air quality monitoring will occur 24/7 during the work to monitor for exceedances. Exceedances will result in adjustments to work and/or mitigations.
- Microtunnelling will take approximately six weeks to complete. Following microtunnelling, crews will tie-in the new sewer to the existing one before backfilling the shafts and performing restoration later this year.
- Work may be delayed due to weather conditions or unforeseen circumstances.
- The traffic and pedestrian measures previously implemented for existing work will be maintained during microtunnelling work.
- No additional traffic or pedestrian route impacts are anticipated during this work.

Contact us:

Call us 24/7 at: **416-202-5100**

Write to us at:

ontarioline@metrolinx.com

Find us on Twitter, Facebook, and

Instagram: **[@ontarioline](https://www.instagram.com/ontarioline)**

Visit our website:

www.metrolinx.com/ontarioline

Visit our community offices:

770 Queen Street East (near Queen & Broadview)

General hours:

Mondays, Tuesdays, and Fridays: 9 a.m. to 5 p.m.

Wednesdays and Thursdays: 10 a.m. to 6 p.m.

Thornccliffe Park:

East York Town Centre

45 Overlea Blvd., Toronto, ON M4H 1C3

Unit 153 (across from the Rogers store)

General hours:

Monday to Friday, 9 a.m. to 5 p.m.